

Parts Manual

Deployable Universal Combat Earthmover (DEUCE)

30/30 (Model DV100)

NSN: 2430-01-423-2819

PIN:7RR00003-Up (Machine)

4CW00222-Up (Engine)

MACHINE IDENTIFICATION

Caterpillar machines are identified with SERIAL NUMBERS and/or PRODUCT IDENTIFICATION NUMBER (PIN). These numbers are assigned to the Chassis and to the engine. The chassis and the engine also carry ARRANGEMENT NUMBERS and in some cases MODIFICATION NUMBERS. These numbers are shown on the SERIAL NUMBER or PIN plates and on the MASTER PLATE in the operator's compartment.

Caterpillar dealers need all of these numbers to determine which components were included on the machine when it was assembled at the factory. This permits accurate identification of replacement part numbers.

ORDERING PARTS

Quality Caterpillar Replacement parts are available from Caterpillar dealers throughout the world. Their parts inventories are up to date and include all parts normally required to protect your investment in Caterpillar machines. Some dealers may offer repair kits, exchange components, or remanufactured parts to allow selection of the most effective repair alternative for a specific situation. When ordering parts, your order should specify the quantity, part number, part name and the serial number. If in doubt about the part number, please provide your dealer with a complete description of the needed item.

HOW TO USE THE PARTS BOOK

Caterpillar Parts Books include illustrations of the groups or assemblies which make up the machine. These illustrations show the standard components plus many of the attachments available for the machine.

The alphabetical index located in the front part of the book should be used to determine the page number on which specific illustrations are shown. Reference to those pages will identify each of the individual serviceable parts.

Captions

The caption under each illustration identifies the part number and name of the group or assembly shown. Part numbers of groups are shown for reference purposes. Your dealer can assist you in identifying the availability of a complete group. If more than one illustration is included for any group, the caption identifies the specific machine serial numbers to which each illustration applies. Reference to the actual group or assembly is necessary in those cases to determine which illustration should be used.

Captions provide additional information such as page numbers where illustrations of sub assemblies are shown, information regarding quantities used, and other information intended to assist the user in determining parts needs.

Remarks, Abbreviations and Symbols

- A Not part of this group
- B Use as required
- C Indicates change
- D Order by the meter
- E Order by the centimeter
- F Not shown
- G Order by the inch
- J Items included in seal kit
- M Metric part (including fasteners)
- R Remfg part may be available
- X Major Component Exchange
- Y Separate illustration
- Z Not serviced separately

Reference Number

The numbers shown in this column refer to the numbers shown within the illustration. To identify any item within the illustration, first determine its reference number, then refer to the same number in the Ref No column of information about that part.

Part Number

These are numbers which are used to identify parts.

Qty

The quantities shown in this column indicate the part number of that item used.

Part Name

Information in this column provides the name of the part as well as additional information such as size, which further aids in the identification of the part.

Indented Part Names

Within each illustration is a parts list identifying each serviceable part in the illustration. When a part name is indented in this list, it means that serviceable item is a part of the serviceable item under which it is indented.

NOTE:

Continuing improvement and advancement of product design may cause changes to your machine which may not be included in this publication. Each publication is reviewed and revised, as required, to update and include these changes in later editions.

Whenever a question arises regarding your Caterpillar product, or this publication, please consult your Caterpillar dealer for the latest available information.

Coupling Identification

The following information provides the name of the coupling as well as additional information such as the type of flange head and thread identification, which further aids in the identification of the part.

Symbols and Description

M	Male
F	Female
NPTF	National Pipe Tapered for Fuels
JIC	JIC 37° Flare
TUBE	Tube Fitting with Lip
GREASE	Special Pipe Thread for Grease Fittings
STOR	SAE Straight Thread O-Ring
ORFS	O-Ring Face Seal
CODE 61	SAE Code 61 Flange
DBL COLLET	Double Collet
QUICK	Standard Quick Disconnect
TUBE A/C	Air Conditioner Short Tube
CAT FLANGE	Caterpillar Flange
ID	Inside Diameter
IN	Inches
LG	Long (Length)
MM	Millimeter
OD	Outside Diameter
OS	Oversized
US	Undersized

Example: ELBOW 90° (M-STOR, M-JIC)

90° Elbow with a male Straight Thread O-Ring fitting on one end, and a male JIC fitting on the other end.

O-Ring Identification

The following information provides the name of the O-Ring as well as additional information such as the size measured as the outside diameter (OD) in millimeters and the type of flange or connector where it's used, which further aids in the identification of the part.

Symbols and Description

ORFS	O-Ring Face Seal
ORB	SAE Straight Thread O-Ring
CODE 61	SAE Code 61 Flange
TUBE A/C	Air Conditioner Short Tube

Example: SEAL-O-RING (ORFS-OD 28)

Seal-O-Ring Face Seal with an outside diameter (OD) of 28 millimeters.

TM5-2430-200-24P
REMANUFACTURED COMPONENTS

As an option when making repairs consider Caterpillar Remanufactured Components. Components that are available through the Caterpillar Remanufactured Program are identified three ways in the parts book:

- with the letter R in the note field of the parts list
- with an R* at the beginning of the first line of the caption
- with an *R at the end of the first line of the caption

Typical components included in the Remanufacturing Program include:

**ALTERNATORS
CONNECTING RODS
CRANKSHAFTS - UNDERSIZE
CRANKSHAFTS - UPGRADE TO NEW
CYLINDER HEADS
ELECTRONIC CONTROL MODULES (ECM)
ELECTRONIC SENSORS
FUEL INJECTORS
FUEL NOZZLES
FUEL PUMPS
GOVERNORS
OIL PUMPS
PISTONS
SHORT BLOCKS
STARTERS
TURBOCHARGERS - COMPLETE
TURBOCHARGER CARTRIDGES
WATER PUMPS**

Caterpillar Remanufactured engines for many engine arrangements are also available. Check with your local Caterpillar Dealer for the availability of Remanufactured Components.

MAINTENANCE PARTS

<u>DESCRIPTION</u>	<u>PART No.</u>	<u>QTY</u>	<u>WHERE USED</u>	<u>PAGE No.</u>
BELT - VEE	3S8448	1	A/C COMPRESSOR	427
BELT - VEE	0366775	1	ENGINE WATER PUMP	29
BELT SET - VEE	9L1127	1	ALTERNATOR	149
BELT - TRACK DRIVE	1R1287	2	UNDERCARRIAGE	262
BLADE - WIPER	1341935	1	CAB WINDSHIELD WIPER	421
BREATHER AS - CRANKCASE	2W9162	1	BREATHER GP	47
BULB - LH	9X4493	2	LH REAR STOP/TURN/SIGNAL LAMP	141
BULB - RH	9X4493	2	RH REAR STOP/TURN/SIGNAL LAMP	141
BULB	9X3463	2	WORK LIGHTS AND HEADLAMPS	138
CAP AS - OIL FILLER	6G9333	1	FILLER GP - OIL	49
ELEMENT - WATER	1512409	1	ENGINE WATER SEPARATOR	124
ELEMENT AS - PRIMARY	6I2503	1	ENGINE AIR	94
ELEMENT AS - SECONDARY	6I2504	1	ENGINE AIR	94
FILTER	1G8878	1	HYDRAULIC OIL	332
FILTER - AIR	1538007	2	A/C/HEATER INSIDE AIR	423
FILTER - AIR	8C4120	1	A/C/HEATER OUTSIDE AIR	423
FILTER - OIL	9T5916	1	POWER TRAIN OIL	331
FILTER AS - FUEL	1R0751	1	ENGINE FUEL	107
FILTER AS - OIL	1R0739	1	ENGINE OIL	51
GASKET	1192940	1	COVER GP - VALVE MECHANISM	25
GASKET	1154202	1	PAN GP - OIL	41
LAMP - RED	1165270	1	WARNING/PARKING BRAKE LAMP	433
LAMP GP - FLOOD	9X1439	6	LIGHTING GP - ROAD	144
LAMP GP - HEAD	9X7169	2	LIGHTING GP - ROAD	144
LAMP - MINIATURE	7G9730	4	DASH PANEL LAMP	431
LAMP - MINIATURE	7N9943	1	DOME LAMP	449
LAMP - MINIATURE	7N5876	1	START AID LAMP	431
LAMP - 24 VOLT	1303565	2	REAR TAIL LAMP	140
LAMP - BLACKOUT	1779102	1	LIGHTING GP	142
LAMP - BLACKOUT	1779103	1	LIGHTING GP	142
LAMP - BLACKOUT	1779104	1	LIGHTING GP	144
LAMP - BLACKOUT	1779105	1	LIGHTING GP	144
LAMP - BLACKOUT	1779106	1	LIGHTING GP	144
LEN AS	9X4174	1	WORK LIGHTS	138
LEN AS	9X7798	1	HEADLAMPS	139
MIRROR GP - SIDE	5P6871	2	OUTSIDE CAB MIRROR	452
REGULATOR - WATER	1193075	1	LINES GP - WATER	80
GASKET	2W7212	1	LINES GP - WATER (REGULATOR)	80
SEAL -O- RING	4L9564	1	ENGINE BREATHER	47
SEAL -O- RING	3K0360	1	ENGINE OIL DRAIN PLUG	28

INDEX

A

ACCESSORY GP-CAB	417
ACCUMULATOR GP & MOUNTING (FRONT TOP)	302
ACCUMULATOR GP & MOUNTING (TENSIONER)	307
ACCUMULATOR GP (BOGIE)	301
ACCUMULATOR GP (BRAKE)	304
.....	306
ACCUMULATOR GP (FRONT TOP)	309
ACCUMULATOR GP (MID)	303
.....	305
ACCUMULATOR GP (TENSIONER)	308
AID GP-ETHER STARTING	130
.....	131
AIR INLET AND EXHAUST SYSTEM	92
ALTERNATOR GP	132
ARM GP-ROCKER	19

B

BASE AS-PEDAL	418
BASIC ENGINE	19
BELT-TRACK DRIVE	262
BLADE AR	398
BLADE GP-ANGLING (7RR00003 THRU 50)	399
BLADE GP-ANGLING (7RR00051-UP)	400
BLOCK GP-CYLINDER	20
BLOCK GP-CYLINDER BASIC	21
BLOCK GP-JUNCTION	133
BLOCK GP-HOOK	473
BRAKE GP	264
.....	265
BRAKING SYSTEM	264
BREATHER GP	47
BULLDOZER AR	401

C

CAB GP-BASIC PART 1 OF 3	420
.....	421
CAB GP-BASIC PART 2 OF 3	422
.....	423
CAB GP-BASIC PART 3 OF 3	424
.....	425
CAMSHAFT GP	22
CASE GP-STEERING	274
.....	275
CASE GP-TRANSMISSION	186
.....	187
CHASSIS AR	222
CLEANER GP-AIR	92
.....	93
.....	94
COLUMN-STEERING	425.00
COMPRESSOR GP	426
.....	427
CONDITIONER GP-AIR	428
.....	429
CONNECTION GP-MUFFLER	95

CONSOLE GP-INSTRUMENT	430
.....	431
CONSOLE GP-OPERATOR	432
.....	433
CONTROL GP & MOUNTING (ENGINE)	135
CONTROL GP & MOUNTING (EPTC)	134
CONTROL GP-BLADE PART 1 OF 2	434
.....	435
CONTROL GP-BLADE PART 2 OF 2	436
.....	437
CONTROL GP-STEERING	438
CONTROL GP-TRANS GEAR SELECTOR	191
CONTROL GP-TRANS GEAR SENSOR	192
CONTROL GP-TRANSMISSION HYD PART 1 OF 2	188
.....	189
CONTROL GP-TRANSMISSION HYD PART 2 OF 2	190
COOLING GP-ENGINE	62
COOLING SYSTEM	62
COVER GP-CAB AIR FILTER	439
COVER GP-CYLINDER	24
COVER GP-FRONT COVER	22.01
COVER GP-ENGINE GEAR HSG	23
COVER GP-PLATFORM (ELECTRICAL)	442
COVER GP-SUSPENSION	221
COVER GP-TRANS GEAR SELECTOR	440
COVER GP-VALVE MECHANISM	25
COVER GP-WIPER MOTOR	441
CRANKSHAFT GP	26
CYLINDER GP & MOUNTING (BOGIE)	318
.....	319
CYLINDER GP & MOUNTING (CAB TILT)	324
CYLINDER GP & MOUNTING (FRONT)	316
.....	317
CYLINDER GP & MOUNTING (LIFT)	326
CYLINDER GP & MOUNTING (MID)	320
.....	321
CYLINDER GP & MOUNTING (RADIATOR TILT)	325
CYLINDER GP & MOUNTING (REAR)	322
.....	323
CYLINDER GP (ANGLE)	310
CYLINDER GP (TILT)	311
CYLINDER GP-BASIC (FRONT)	312
CYLINDER GP-BASIC (LIFT)	315
CYLINDER GP-BASIC (MID & REAR)	314
CYLINDER GP-BASIC (MINOR)	313
CYLINDER GP-SHIFT	193

D

DAMPER GP-PULLEY	27
DIFFERENTIAL STEERING SYSTEM	274
DISPOSAL GP-FUMES	48
DOOR GP	443
DOOR GP-CAB	444
.....	445
DRAIN GP-OIL PAN	28
DRAWBAR GP	223
DRIVE GP-OUTPUT PART 1 OF 3	276
.....	277

INDEX

DRIVE GP-OUTPUT PART 2 OF 3278
279
 DRIVE GP-OUTPUT PART 3 OF 3280
 DRIVE GP-WATER PUMP.....29
 DRYER GP-AIR.....446

E

ELBOW GP-AIR INLET96
ELECTRICAL AND STARTING SYSTEM.....130
 ELECTRICAL AR136
EMP/NBC INDEX.....517
 ENCLOSURE GP PART 1 OF 2.....224
225
 ENCLOSURE GP PART 2 OF 2226
227
 ENGINE AR-BASIC.....16
 ENGINE AR (SWAP-IN COMP).....15
 ENGINE AR-CORE17
ENGINE ARRANGEMENT16

F

FAN GP-CIRCULATING.....446.01
447
 FASTENER GP-ENGINE GEAR HSG29.01
 FASTENER GP-ENGINE30
 FENDER GP-REAR228
229
 FILLER GP-ENGINE OIL49
 FILLER GP-HYDRAULIC327
 FILTER GP & MOUNTING (CHARGE OIL)330
 FILTER GP & MOUNTING (HYD OIL).....328
 FILTER GP & MOUNTING (TRANS OIL)329
 FILTER GP (HYD OIL)332
 FILTER GP-BASIC (TRANS OIL)331
 FILTER GP-ENGINE OIL50
51
 FILTER GP-FUEL PART 1 OF 2.....104
105
 FILTER GP-FUEL PART 2 OF 2.....106
107
 FINAL DRIVE AR (SWAP-IN COMP)15
 FLYWHEEL GP31
FRAME AND BODY221
 FRAME GP (7RR00003 THRU 50).....402
403
 FRAME GP (7RR00051-UP).....404
 FRAME GP-TRACK TYPE TRACTOR230
FUEL SYSTEM104

G

GAGE GP-ENGINE OIL LEVEL.....52
 GEAR GP-FRONT.....32
 GENERAL MACHINE AR.....15
 GRILL GP-RADIATOR HINGE.....232
233
 GUARD GP-ALTERNATOR BELT33

GUARD GP-BOTTOM GUARDS234

H

HANDRAIL GP235
 HEAD GP-CYLINDER35
 HEAD GP-CYLINDER BASIC34
 HEATER GP & MOUNTING.....66
 HEATER GP-AIR INLET137
 HEATER GP-BASIC64
65
 HOUSING GP-FLYWHEEL.....36
 HOUSING GP-FRONT ENGINE GEAR.....37
 HYDRAULIC AR.....333
 HYDRAULIC AR-AUX334
 HYDRAULIC AR-FAN67
HYDRAULIC SYSTEM.....305

I

IDLER GP-FRONT236
 IDLER GP-TRACK LH SIDE238
239
 IDLER GP-TRACK RH SIDE.....240
241
IMPLEMENTS398
 INSTALLATION AR18
 INSULATION GP-CAB448

J

JOINT GP-UNIVERSAL281

L

LAMP GP-DOME.....449
 LAMP GP-FLOOD.....138
 LAMP GP-HEAD139
 LAMP GP-SIGNAL140
141
 LIFTER GP-VALVE38
 LIFTING GP-ENGINE.....39
 LIGHTING GP142
143
 LIGHTING GP-ROAD.....144
 LINES GP-A/C.....450
451
 LINES GP-ACCM PART 1 OF 4 (7RR00003 THRU 77) 336
337
 LINES GP-ACCM PART 2 OF 4 (7RR00003 THRU 77) 338
339
 LINES GP-ACCM PART 3 OF 4 (7RR00003 THRU 77) 340
341
 LINES GP-ACCM PART 4 OF 4 (7RR00003 THRU 77) 342
343
 LINES GP-ACCM PART 1 OF 4 (7RR00078-UP)343.00
343.01
 LINES GP-ACCM PART 2 OF 4 (7RR00078-UP)343.02
343.03

INDEX

LINES GP-ACCM PART 3 OF 4 (7RR00078-UP)	343.04	287
.....	343.05	LINES GP-STEERING PART 3 OF 3	288
LINES GP-ACCM PART 4 OF 4 (7RR00078-UP)	343.06	289
.....	343.07	LINES GP-TILT	352
LINES GP-AIR	97	353
LINES GP-ANGLE	405	LINES GP-TURBO	54
LINES GP-ATTACHMENT	344	LINES GP-WATER	80
.....	345	LINES GP-WINCH	410
LINES GP-BRAKE PART 1 OF 4	266	411
.....	267	LUBRICATION SYSTEM	47
LINES GP-BRAKE PART 2 OF 4	268		
.....	269		
LINES GP-BRAKE PART 3 OF 4	270		
.....	271		
LINES GP-BRAKE PART 4 OF 4	272		
LINES GP-COOLANT	68		
.....	69		
LINES GP-COUPLER	474		
LINES GP-DIFF STEER LUBE	282		
.....	283		
LINES GP-ENGINE OIL	53		
LINES GP-FUEL PART 1 OF 2 (7RR00003 THRU 40) ..	108		
.....	109		
LINES GP-FUEL PART 2 OF 2 (7RR00003 THRU 40) ..	110		
.....	111		
LINES GP-FUEL PART 1 OF 2 (7RR00041-UP)	112		
.....	113		
LINES GP-FUEL PART 2 OF 2 (7RR00041-UP)	114		
.....	115		
LINES GP-GAGE	475		
LINES GP-HEATER PART 1 OF 2	70		
.....	71		
LINES GP-HEATER PART 2 OF 2	72		
LINES GP-HYD FAN PART 1 OF 3	74		
.....	75		
LINES GP-HYD FAN PART 2 OF 3	76		
.....	77		
LINES GP-HYD FAN PART 3 OF 3	78		
.....	79		
LINES GP-HYDRAULIC	116		
LINES GP-LIFT CYL PART 1 OF 2	346		
.....	347		
.....	406		
.....	407		
LINES GP-LIFT CYL PART 2 OF 2	348		
.....	349		
.....	408		
.....	409		
LINES GP-POWER TRAIN OIL PART 1 OF 3	194		
.....	195		
LINES GP-POWER TRAIN OIL PART 2 OF 3	196		
.....	197		
LINES GP-POWER TRAIN OIL PART 3 OF 3	198		
LINES GP-PUMP (IMPLEMENT)	350		
.....	351		
LINES GP-STEERING PART 1 OF 3	284		
.....	285		
LINES GP-STEERING PART 2 OF 3	286		

M

MACHINE ARRANGEMENT	15
MAINTENANCE PARTS	9
MANIFOLD GP	356
MANIFOLD GP (AUX TOOL)	354
MANIFOLD GP (MULTI-FUNCTION)	355
MANIFOLD GP-EXHAUST	98
MANIFOLD GP-INLET	99
MECHANISM GP-VALVE	40
MIRROR GP-CONVEX	453
MIRROR GP-SIDE	452
MOTOR GP & MOUNTING (STEERING)	290
MOTOR GP-BASIC (COOLING FAN)	357
MOTOR GP-ELECTRIC	146
.....	147
MOTOR GP-ELECTRIC STARTING	148
MOTOR GP-GEROTOR (WINCH)	358
MOTOR GP-PISTON (STEERING)	360
.....	361
MOTOR GP-WIPER	145
MOUNTING GP-ALTERNATOR	149
MOUNTING GP-BRACKET (DECON TANK)	242
MOUNTING GP-BRACKET (FOOT REST)	454
MOUNTING GP-BRACKET (RIFLE)	455
MOUNTING GP-CAB	456
MTG GP-ENGINE OIL FILTER (7RR00003 THRU 42) ..	56
.....	57
MTG GP-ENGINE OIL FILTER (7RR00043-UP)	58
.....	59
MOUNTING GP-FAN DRIVE	82
.....	83
MOUNTING GP-FUEL FILTER	117
MOUNTING GP-PLATFORM (CAB)	458
.....	459
MOUNTING GP-RADIO	460
MOUNTING GP-TRANSAXLE	199
MOUNTING GP-TRANSMISSION	200
MOUNTING GP-TORQUE CONVERTER	201
MOUNTING GP-WHEEL	244
.....	245
MUFFLER GP	100
.....	101

N

NSN CROSS-REFERENCE LIST	511
---------------------------------------	-----

INDEX

O

OPERATOR AR461
OPERATOR STATION417

P

PAINT GP-TRANSFER476
477
 PAN GP-OIL41
 PANEL GP-BREAKER150
151
152
153
PART NUMBER INDEX480
 PEDAL GP-BRAKE462
 PEDAL GP-GOVERNOR463
 PISTON GP-ROD42
 PLANETARY GP PART 1 OF 2202
203
 PLANETARY GP PART 2 OF 2203.00
203.01
 PLUG GP-CYLINDER HEAD118
POWER TRAIN186
 POWER TRAIN AR204
 PROTECTOR GP (CAB FRONT)464
 PULLEY GP-CRANKSHAFT43
 PUMP GP & MOUNTING (COOLING FAN)84
 PUMP GP & MOUNTING (HAND)367
 PUMP GP & MOUNTING (IMPLEMENT)366
 PUMP GP & MOUNTING (STEERING)291
 PUMP GP & MOUNTING-FUEL121
 PUMP GP-BASIC (COOLING FAN)363
 PUMP GP-BASIC (TRANSMISSION)362
 PUMP GP-ENGINE OIL60
61
 PUMP GP-FUEL INJECTOR119
 PUMP GP-GEAR (TRANSMISSION)364
 PUMP GP-HAND (BRAKE & BLADE)478
 PUMP GP-HAND (RAD & CAB TILT)365
 PUMP GP-HYDRAULIC (FUEL)120
 PUMP GP-PISTON (IMPLEMENT)368
 PUMP GP-PISTON PART 1 OF 2 (STEERING)370
371
 PUMP GP-PISTON PART 2 OF 2 (STEERING)372
373
 PUMP GP-WATER85
86

R

RADIATOR GP-BASIC88
89
 RADIATOR GP-COOLER90
 RECOIL GP-ADJUSTER LH SIDE248
249
 RECOIL GP-ADJUSTER RH SIDE246
247
 RECOVERY GP-ENGINE COOLANT91

ROLLER GP-MIDDLE250
251
 ROTATING GP-IMPLEMENT PUMP374

S

SCRAPER GP-IDLER252
 SEAL GP-BASIC (FLYWHEEL HOUSING)44
 SEAL GP-CRANKSHAFT45
 SEAT GP-SUSPENSION465
466
 SENDER GP-TEMP & PRESS154
156
157
 SENSOR GP-POSITION GEAR SELECT158
 SEPARATOR GP-WATER (7RR00003 THRU 40)122
123
 SEPARATOR GP-WATER (7RR00041-UP)124
125
SERVICE EQUIPMENT AND SUPPLIES473
 SHAFT GP-MAIN205
 SINGLETREE GP412
 STARTING KIT-COLD WEATHER (OPTIONAL)159
 STEERING GP-DIFFERENTIAL292
 STEERING GP-HYDRAULIC294
295
 SUPPORT GP (RADIATOR)253
 SUPPORT GP-ENGINE46
 SUPPORT GP-SUSPENSION LH SIDE256
257
 SUPPORT GP-SUSPENSION RH SIDE254
255
 SUSPENSION GP-SEAT468
469
 SWITCH GP160
161
162

T

TANK GP-FUEL126
127
 TANK GP-HYDRAULIC376
377
 TENSIONER GP LH SIDE258
259
 TENSIONER GP RH SIDE260
261
 TOOL GP479
 TORQUE CONVERTER GP206
207
 TORQUE CONVERTER GP-HOUSING PART 1 OF 2208
209
 TORQUE CONVERTER GP-HOUSING PART 2 OF 2210
211
 TRANSMISSION AR212
 TURBO GP102
 TURBO GP-BASIC103

INDEX

U

UNDERCARRIAGE AR262

V

VALVE GP & MOUNTING298
 VALVE GP & MOUNTING (BLADE LOCK)393
 VALVE GP & MOUNTING (BLADE)390
391
 VALVE GP & MOUNTING (CONV LOCK UP).....216
 VALVE GP & MOUNTING (LOCK OUT).....392
 VALVE GP & MOUNTING-STEERING SOLENOID297
 VALVE GP & MOUNTING-TRANS PRIORITY296
 VALVE GP-BANK (BLADE)378
 VALVE GP-BRAKE470
 VALVE GP-CHECK (LIFT)379
 VALVE GP-COMPENSATOR380
 VALVE GP-CONTROL (ANGLE)384
 VALVE GP-CONTROL (LIFT)383
 VALVE GP-CONTROL (MULTI-FUNCTION)386
387
 VALVE GP-CONTROL (TILT)382
 VALVE GP-FAN SPEED CONTROL381
 VALVE GP-IMPLEMENT MAKE UP388
 VALVE GP-LOCK UP CLUTCH/SOL214
215
 VALVE GP-PRESSURE RELIEF (ANGLE)394
 VALVE GP-RELIEF (FUEL)128
 VALVE GP-RELIEF (TORQUE CONV).....218
 VALVE GP-SELECTOR (TRANS GEAR)219
 VALVE GP-SOLENOID (BLADE LOCK).....395
 VALVE GP-SOLENOID (FUEL PUMP).....185
 VALVE GP-SOLENOID (GEAR SHIFT)396
 VALVE GP-SOLENOID (LOCK UP CLUTCH)299
 VALVE GP-SOLENOID (STEERING)300
 VALVE GP-SOLENOID (SUSP LOCK)397
 VALVE GP-TEST (TRANSMISSION)220
 VALVE GP-TRANS PRIORITY217

W

WINCH GP414
415
 WINCH GP-TOWING416
 WINDOW GP-CAB471
472
 WIRING GP & BATTERY163
 WIRING GP & BATTERY (OPTIONAL-ARCTIC)164
165
 WIRING GP & INSTRUMENT170
 WIRING GP-CONSOLE168
169
 WIRING GP-ENGINE CONTROL166
167
 WIRING GP-LIGHTING172
173
 WIRING GP-VEHICLE PART 1 OF 6174

.....175
 WIRING GP-VEHICLE PART 2 OF 6176
177
 WIRING GP-VEHICLE PART 3 OF 6178
179
 WIRING GP-VEHICLE PART 4 OF 6180
181
 WIRING GP-VEHICLE PART 5 OF 6182
183
 WIRING GP-VEHICLE PART 6 OF 6184

MACHINE ARRANGEMENT

1	1186804	BULLDOZER AR	401
1	1568587	CONTROL AS-ENGINE ECM (PRE-PROGRAMMED)	135
1	1447164	CHASSIS AR	222
1	1447169	ELECTRICAL AR	136
1	1287367	ENGINE AR-BASIC	16
1	1388046	ENGINE AR (SWAP-IN COMP)	15
1	1388051	FINAL DRIVE AR (SWAP-IN COMP)..	15
1	1447162	GENERAL MACHINE AR.....	15
1	1447167	HYDRAULIC AR-AUX	334
1	1447168	HYDRAULIC AR.....	333
1	1448596	HYDRAULIC AR-FAN.....	67
1	1447163	INSTALLATION AR.....	18
1	1447166	OPERATOR AR	461
1	1447165	POWER TRAIN AR	204
1	1670604	STARTING KIT-COLD WEATHER	159
1	1447210	UNDERCARRIAGE AR	262
1	1450099	WINCH GP-TOWING	416

1447162 GENERAL MACHINE AR

ENGINE ARRANGEMENT

1	1228947	CONTROL GP & MTG (ENGINE)	135
1	1006269	COOLER GP-ENGINE OIL	62
1	1181727	COVER GP-FRONT HOUSING	22.01
1	1368888	COVER GP-ENGINE GEAR HSG	23
1	1399142	COVER GP-CYLINDER	24
1	1004943	COVER GP-VALVE MECH.....	25
1	1331348	DISPOSAL GP-FUMES	48
1	1154208	DRAIN GP-OIL PAN	28
1	1206657	DRIVE GP-WATER PUMP	29
1	1480768	ELBOW GP-AIR INLET	96
1	1420725	ENGINE AR-CORE	17
1	1547192	FASTENER GP-ENGINE GEAR HSG	29.01
1	1803666	FASTENER GP-ENGINE	30
1	1260458	FILTER GP-FUEL.....	104
1	1753222	FILTER GP-ENGINE OIL	50
1	1443440	FLYWHEEL GP	31
1	1187284	HEATER GP-AIR INLET.....	137
1	5R8847	HOUSING GP-FLYWHEEL	36
1	1014575	HOUSING GP-FRONT ENG GEAR....	37
1	1418267	LIFTING GP-ENGINE.....	39
1	7C2475	LINES GP-ENGINE OIL	53
1	7C2476	LINES GP-TURBO OIL	54
1	1004942	LINES GP-WATER	80
1	6I2298	MANIFOLD GP-EXHAUST.....	98
1	1265931	PAN GP-OIL	41
1	4W5429	PULLEY GP-CRANKSHAFT	43
1	1214328	PUMP GP-WATER	85
1	7C1770	SEAL GP-BASIC	44
1	1509573	SENSOR GP-TEMP & PRESS	156
1	1523385	WIRING GP-ENGINE CONTROL	166

1287367 ENGINE AR-BASIC

Part of 1447162 General Ar

ENGINE ARRANGEMENT

1	1291165	BLOCK GP-CYLINDER	20
1	1N3477	BREATHER GP	47
1	1051803	CAMSHAFT GP	22
1	1136087	CRANKSHAFT GP	26
1	1331345	DAMPER GP-PULLEY	27
1	1014540	GEAR GP-FRONT	32
1	1154078	HEAD GP-CYLINDER	35
6	1051792	LINES GP-HYD OIL	116
1	1171678	MANIFOLD GP-INLET	99
1	1013266	MECHANISM GP	40
6	1479592	PISTON GP-ROD	42
1	1212094	PLUG GP-CYLINDER HEAD	118
1	4W2195	PUMP GP-ENGINE OIL	61
6	1197001	PUMP GP-INJECTOR	119
1	1480954	PUMP GP & MTG-FUEL	121
1	1403051	SEAL GP-CRANKSHAFT	45
1	1334969	TURBO GP	102

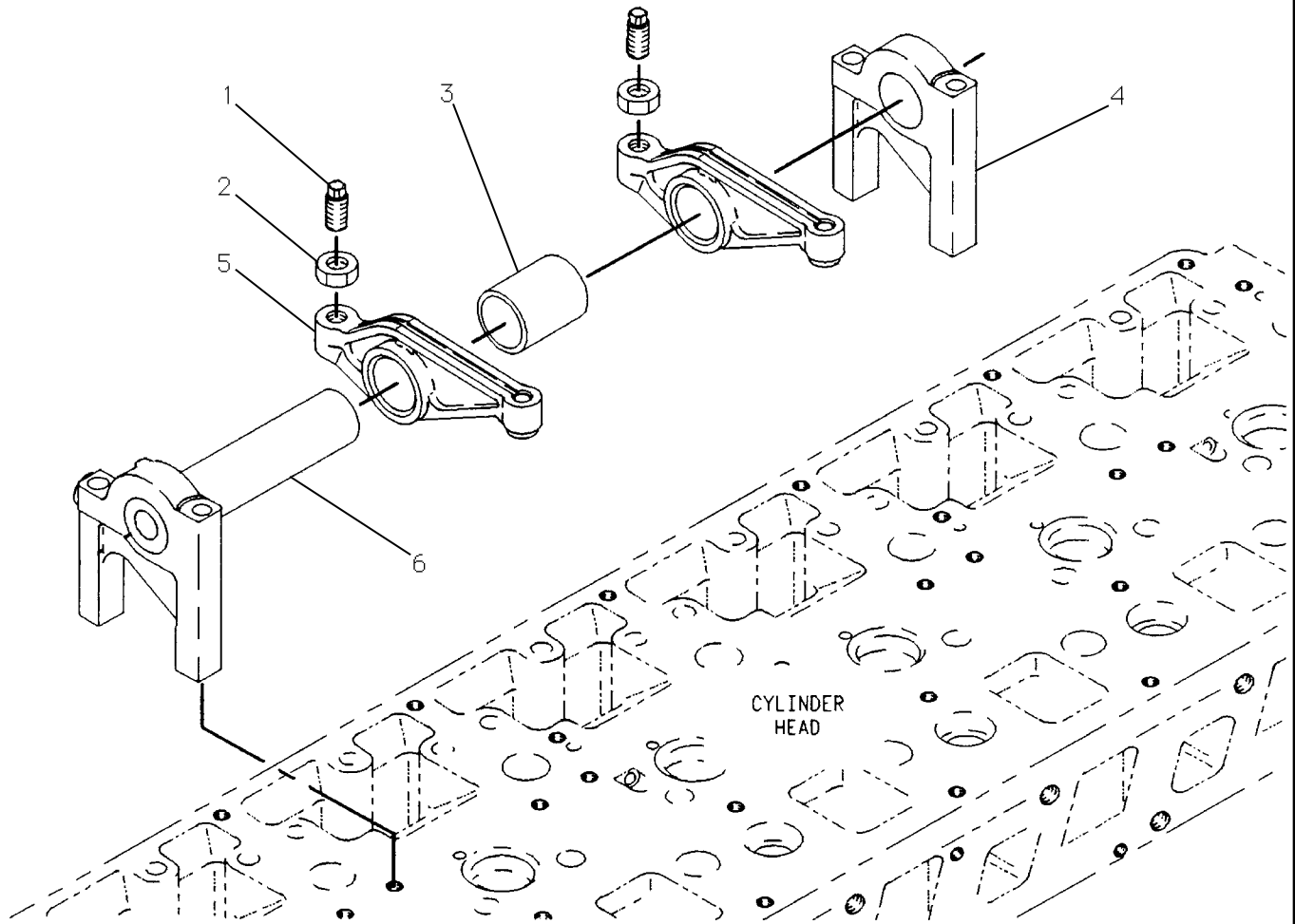
1420725 ENGINE AR-CORE
Part of 1287367 Engine Ar-Basic

ENGINE ARRANGEMENT

1	1265835	AID GP-ETHER STARTING	130
1	1450071	CLEANER GP-AIR	92
1	1265830	COMPRESSOR GP	427
1	1488882	FILLER GP-ENGINE OIL	49
1	1457262	GAGE GP-ENGINE OIL LEVEL.....	52
1	1493203	GUARD GP-ALTERNATOR BELT	33
1	1363939	LINES GP-COOLANT	68
1	1491125	MOTOR GP-ELECT STARTING	148
1	1302789	MTG GP-ALTERNATOR.....	149
1	1450072	MTG GP-FAN DRIVE	82
1	1304552	MTG GP-ENGINE OIL FILTER	56
1	1809106	MTG GP-ENGINE OIL FILTER	58
1	1361145	MUFFLER GP	100
1	1255578	RADIATOR GP	88
1	1455009	RECOVERY GP-ENGINE COOLANT	91
1	1228638	SUPPORT GP-ENGINE	46

1447163 INSTALLATION AR
Part of 1447162 General Ar

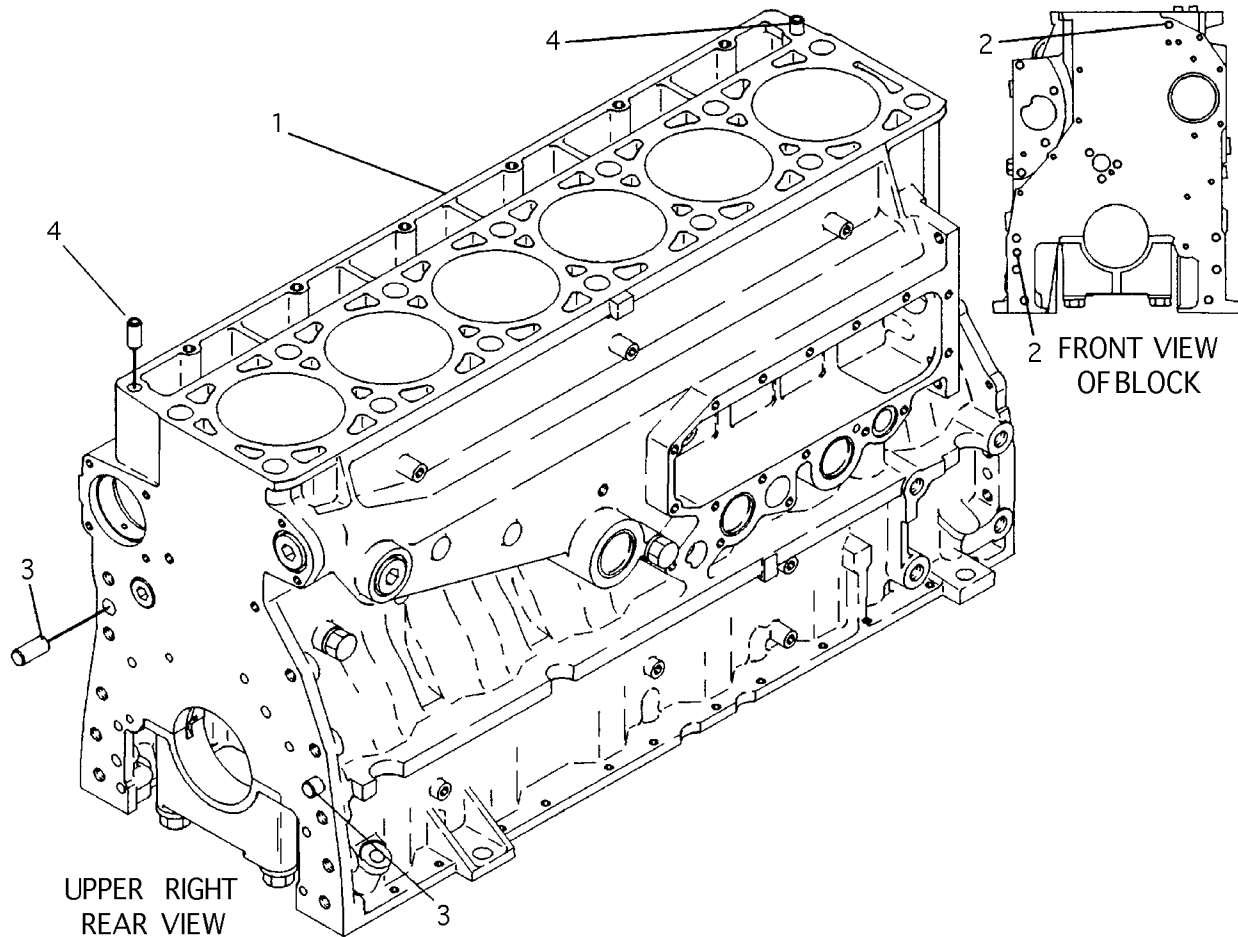
BASIC ENGINE



NOTE	REF NO	PART NUMBER	QTY	PART NAME	NOTE	REF NO	PART NUMBER	QTY	PART NAME
	1	9Y4832	2	SCREW-VALVE ADJUST					
	2	2Y5829	2	NUT-HEX					
	3	1013260	1	SPACER-ROCKER ARM					
	4	1013267	1	SUPPORT-SHAFT					
	5	1260480	2	ARM AS-ROCKER					
		6F4855	1	SEAL-O-RING (OD 19.2)					
		1154192	1	SOCKET-ARM					
		1154193	1	BUTTON-ROCKER ARM					
	6	1013262	1	SHAFT AS-ARM					
		2D6642	1	BALL					
		7M5130	1	PIN-SPRING					
		7W4137	1	SHAFT AS					
		0L1026	1	PLUG-CUP					

1154180 ARM GP-ROCKER
Part of 1013266 Mechanism Gp-Valve

BASIC ENGINE



NOTE	REF NO	PART NUMBER	QTY	PART NAME	NOTE	REF NO	PART NUMBER	QTY	PART NAME
Y	1	1291164	1	BLOCK GP-CYLINDER BASIC					
	2	6V3538	2	DOWEL					
	3	7N5683	2	DOWEL					
	4	1W8407	2	SLEEVE					
AF	-	1077604	1	SLEEVE-CYLINDER (FOR SALVAGE OF DAMAGED CYLINDER BORES IN BLOCK. QUANTITY TO BE DETERMINED BY USER.)					

A - NOT PART OF THIS GROUP
 F - USE AS REQUIRED
 Y - SEPARATE ILLUSTRATION

1291165 BLOCK GP-CYLINDER

1291164-Page 21

Part of 1420725 Engine Ar-Core