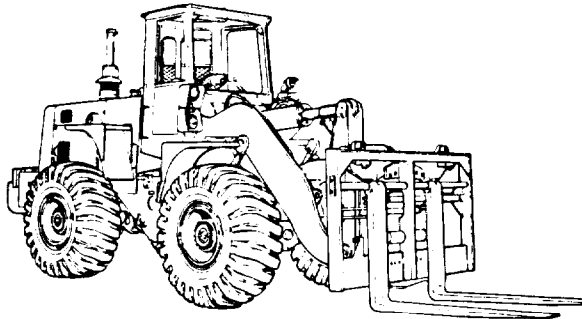
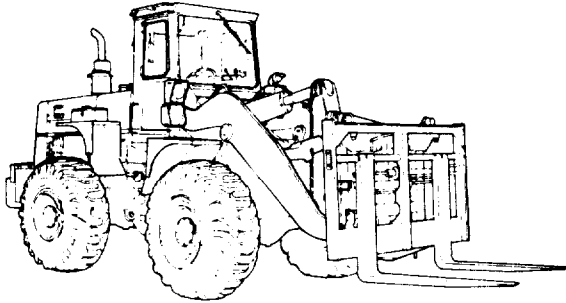


**DIRECT SUPPORT AND GENERAL
SUPPORT MAINTENANCE**



S/N 2000 AND BELOW



S/N 2001 AND ABOVE

**TRUCK, FORKLIFT, DED
PNEUMATIC TIRE,
10,000 LB. CAPACITY
ROUGH TERRAIN,
ARTICULATED FRAME STEER
(DRESSER INDUSTRIES
MODEL M10A, MHE 236)
(NSN 3930-01-054-3833)**

CHAPTER 1	
Introduction	Page 1-1
Chapter 2.....	Page 1-1
General Maintenance Procedures	Page 2-1
DIRECT SUPPORT MAINTENANCE	
CHAPTER 3	
Troubleshooting Symptom Index	Page 3-1
CHAPTER 4	
Troubleshooting	Page 4-1
CHAPTER 5	
Electrical System Maintenance	Page 5-1
CHAPTER 6	
Transmission Troubleshooting and Maintenance.....	Page 6-1
CHAPTER 7	
Axle Troubleshooting and Maintenance.....	Page 7-1
CHAPTER 8	
Brake Troubleshooting and Maint- enance.....	Page 8-1
CHAPTER 9	
Steering Troubleshooting and Maintenance.....	Page 9-1
CHAPTER 10	
Frame and Towing Attachment Maintenance.....	Page 10-1
CHAPTER 11	
Body, Chassis and Hull Accessory Items Maintenance.....	Page 11-1
CHAPTER 12	
Hydraulic System Troubleshooting and Maintenance.....	Page 12-1
GENERAL SUPPORT MAINTENANCE	
CHAPTER 13	
Engine, Fuel, Exhaust and Cooling Maintenance.....	Page 13-1
CHAPTER 14	
Electrical System Maintenance	Page 14-1
CHAPTER 15	
Transmission Maintenance	Page 15-1
CHAPTER 16	
Propeller and Propeller Shaft Maintenance.....	Page 16-1
CHAPTER 17	
Brake Maintenance.....	Page 17-1
APPENDICES A, C, D, E	
GLOSSARY	
ALPHABETICAL INDEX.....	Index-1

*This TM supersedes the Direct and General Support Maintenance portion of TM 10-3930-643-14&P, dated 30 November 1981, and the Direct and General Support Maintenance portions of all changes.

APPROVED FOR PUBLIC RELEASE, DISTRIBUTION IS UNLIMITED.

TECHNICAL MANUAL

HEADQUARTERS
 DEPARTMENT OF THE ARMY
 Washington D.C., 30 January 1990

DIRECT SUPPORT AND GENERAL SUPPORT MAINTENANCE MANUAL

TRUCK, FORKLIFT, DED
 PNEUMATIC TIRE, 10,000 LB. CAPACITY
 ROUGH TERRAIN, ARTICULATED FRAME STEER
 (DRESSER INDUSTRIES MODEL M10A, MHE 236)
 (NSN 3930-01-054-3833)

REPORTING ERRORS AND RECOMMENDING IMPROVEMENTS

You can help improve this manual. If you find any mistakes or if you know of a way to improve the procedures, please let us know. Mail your letter, DA Form 2028 (Recommended Changes to Publications and Blank Forms) or DA Form 2028-2 located in the back of this manual directly to: Commander, U.S. Army Tank-Automotive Command, ATTENTION: AMSTA-MBS, Warren, MI 48397-5000. A reply will be furnished to you.

TABLE OF CONTENTS

	<u>Page</u>
HOW TO USE THIS MANUAL	iii
CHAPTER 1 INTRODUCTION	1-1
CHAPTER 2 GENERAL MAINTENANCE PROCEDURES	2-1
CHAPTER 3 TROUBLESHOOTING SYMPTOM INDEX	3-1
CHAPTER 4 ENGINE, FUEL, EXHAUST AND COOLING TROUBLESHOOTING AND MAINTENANCE	4-1
CHAPTER 5 ELECTRICAL SYSTEM MAINTENANCE	5-1
CHAPTER 6 TRANSMISSION TROUBLESHOOTING AND MAINTENANCE	6-1
CHAPTER 7 FRONT AND REAR AXLES TROUBLESHOOTING AND MAINTENANCE	7-1

*This TM supersedes the Direct and General Support Maintenance portion of TM 10-3930-643-14&pi dated 30 November 1981, and the Direct and General Support Maintenance portions of all changes.

APPROVED FOR PUBLIC RELEASE. DISTRIBUTION IS UNLIMITED.

TABLE OF CONTENTS (cont)

	<u>Page</u>
CHAPTER 8	8-1
CHAPTER 9	9-1
CHAPTER 10	10-1
CHAPTER 11	11-1
CHAPTER 12	12-1
CHAPTER 13	13-1
CHAPTER 14	14-1
CHAPTER 15	15-1
CHAPTER 16	16-1
CHAPTER 17	17-1
APPENDIX A	A-1
APPENDIX B	NOT APPLICABLE TO THIS MANUAL
APPENDIX C	C-1
APPENDIX D	D-1
APPENDIX E	E-1
	INDEX-1

HOW TO USE THIS MANUAL

This manual is designed to help you maintain the M10A Forklift. It is divided into chapters, sections and appendices. Chapter 1 contains information concerning the vehicle, its characteristics, systems and components. Chapter 2 provides useful general maintenance information. Chapters 3 through 15 contain procedures necessary for troubleshooting, maintenance and general upkeep. The maintenance procedures contained in these chapters tell you several things:

-what tools you need to do the job
-materials or parts required
-what condition the vehicle is to be in before work is started.

The appendices contain supplemental information which assist you in the performance of the maintenance procedures.

In addition to the text, you'll have either an assembled or an exploded view illustration of the associated parts. Sometimes the illustration will be keyed by an arrow to an overall view of the vehicle to help you determine the approximate location of the parts. The illustration is keyed to the text by numbers and shows you how to take the part off and put it on. The following example will show some of the features of this manual.

EXAMPLE

An operator brings his M10A Forklift into the shop with an engine cooling problem: the engine stalls frequently or does not develop full power. The best way to solve his problem is by using your manual. This is what you do:

1. How do you start?

Look at the cover of the manual. On the cover you'll find a listing for TROUBLESHOOTING SYMPTOM INDEX. To find the page fast, open the manual by using the black tab that lines up with the listing on the cover.

2. What kind of problem do you have?

Find it in the symptom index. The symptom index is a list of problems covered by a chapter. It tells you that your problem, "Engine stalls or lacks power" is covered in paragraph 4-1, malfunction entry D.

3. How do you determine what is causing the problem?

Go to paragraph 4-1, malfunction entry number D. There you will find the troubleshooting procedures you will need. The procedure has columns with the headings: MALFUNCTION, TEST OR INSPECTION, and CORRECTIVE ACTION. Starting at step 1, read the procedure. Each step tells you what to do and what to look for. Follow the steps, in order, until you find your problem. The corrective action column will tell you what to do next.

4. Let's assume that the troubleshooting procedures lead you to a faulty fuel injector nozzle. The replacement procedure is in paragraph 4-13. The procedure contains all the information you will need to repair or replace the fuel injector nozzle. First, check the introductory material. It tells you what you will need before you start the job. Below the introductory material is an assembled view of the vehicle showing the approximate location of the fuel injector nozzles and an illustration which shows you how to do the job.

5. If on the other hand, you know the cause of the problem, refer to the alphabetical index located at the rear of this manual. Find the name of the part to be replaced and the paragraph number for the maintenance procedure. For example, you notice a leak in the fuel pump. You know the fuel pump must be replaced or repaired. Refer to the alphabetical index under the listing "Fuel pump." Turn to the page referenced for replacement and repair procedures.

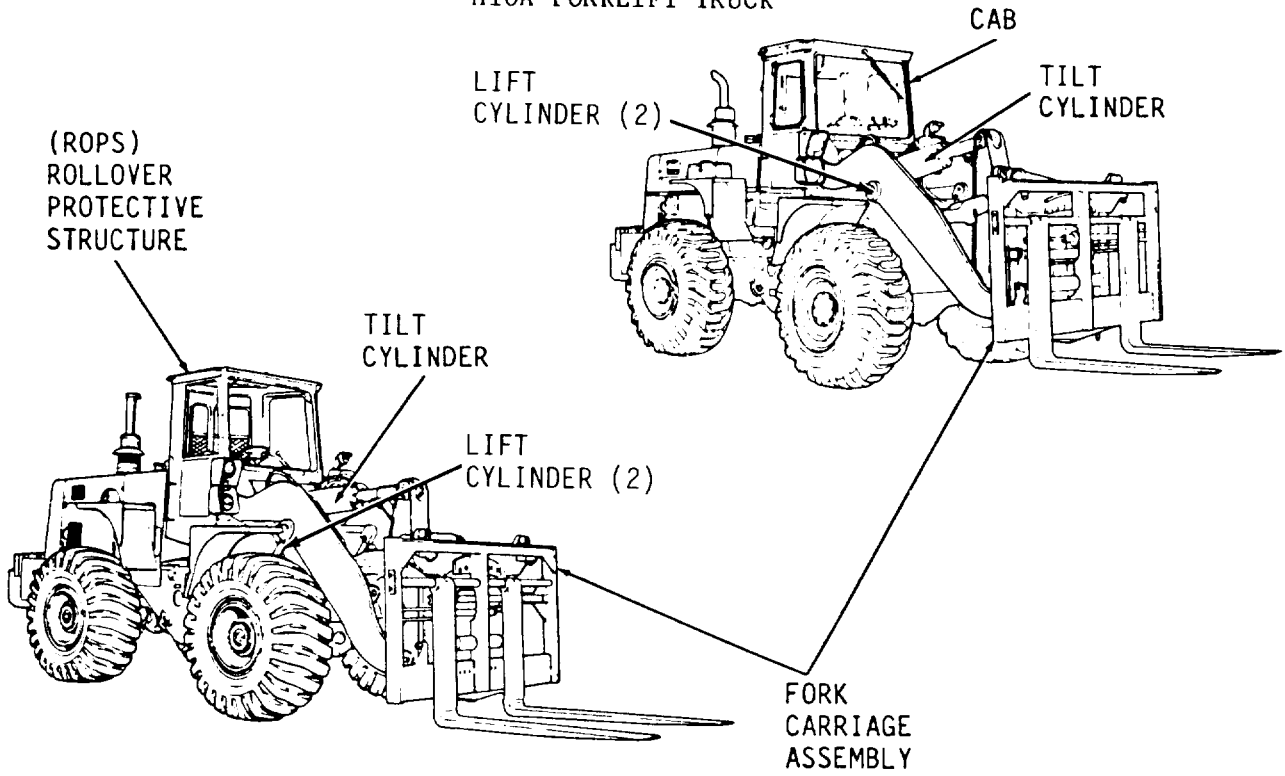
CHAPTER 1

INTRODUCTION

INDEX

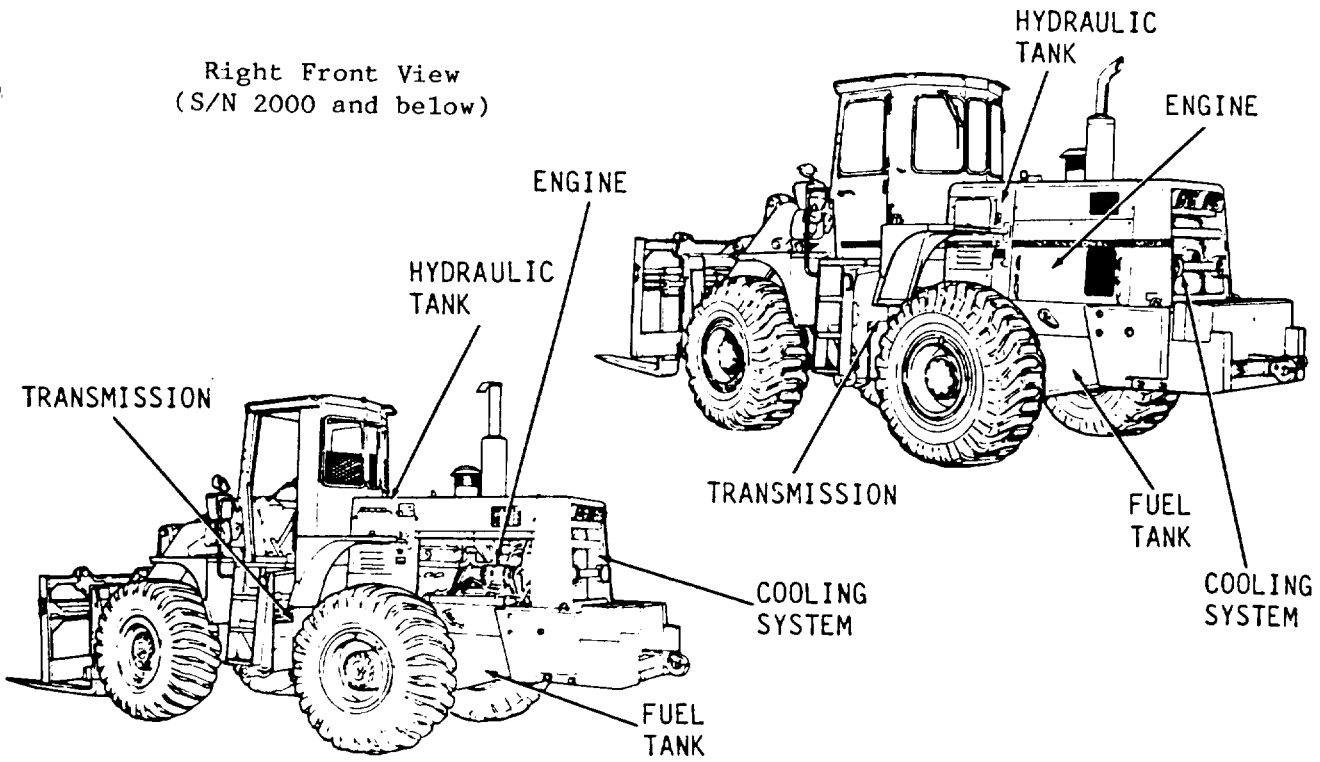
<u>Section</u>	<u>Title</u>	<u>Paragraph</u>	<u>Page</u>
I	GENERAL INFORMATION		
	Scope	1-1	1-3
	Maintenance Forms, Records and Reports	1-2	1-3
	Destruction of Army Material to Prevent Enemy Use	1-3	1-3
	Quality Assurance/Quality Control (QA/QC)	1-4	1-3
	Nomenclature Cross Reference	1-5	1-4
	Reporting Equipment Improvement Recommendations (EIR)	1-6	1-4
	Warranty Information	1-7	1-4
II	EQUIPMENT DESCRIPTION AND DATA		
	Differences in Models	1-8	1-5

M10A FORKLIFT TRUCK



Right Front View
(S/N 2001 and above)

Right Front View
(S/N 2000 and below)



Left Rear View
(S/N 2000 and below)

Left Rear View
(S/N 2001 and above)

CHAPTER 1

INTRODUCTION

Section I. GENERAL INFORMATION.

1-1. Scope. This chapter provides general descriptive data to aid the maintenance specialist in understanding the various mechanical functions of the M10A Forklift.

a. Type of Manual. Direct Support and General Support Maintenance Manual.

b. Model Number and Equipment Name. MHE 236, (NSN 3930-01-054-3833) Rough Terrain 10,000 Pound Capacity, Articulated Frame Steer, Pneumatic Tire, DED, M10A Forklift.

c. Purpose of Equipment. Handle, transport, and stock materials on various types of terrain. The vehicle has a capacity of 10,000 pounds, 48 inch load center and can lift the load to a maximum of 121.6 inches.

d. Metric Dimensions. The equipment described herein is non-metric and does not require metric common or special tools. Therefore, metric units are not supplied.

1-2. Maintenance Forms, Records, and Reports. Department of the Army forms and procedures used for equipment maintenance will be those prescribed by DA PAM 738-750, The Army Management System (TAMMS).

1-3. Destruction of Army Material to Prevent Enemy Use. TM 750-244-6, "Procedures for Destruction of Equipment to Prevent Enemy Use."

1-4. Quality Assurance/Quality Control (QA/QC).

a. No particular quality assurance or quality control technical manuals pertain specifically to the M10A Forklift. Use standard QA/QC procedures.

b. Defective material received through the supply system should be reported on a Quality Deficiency Report (QDR), SF368. QDR's should be mailed directly to: Commander, U.S. Army Tank Automotive Command, ATTN: AMSTA-QRT, Warren, MI 48397-5000. A reply will be furnished directly to you.

INTRODUCTION. (cont)

1-5. Nomenclature Cross Reference. This listing includes nomenclature cross-references used in this manual.

<u>Official Nomenclature</u>	<u>Common Name</u>
Truck, Forklift, DED	Forklift
Pneumatic Tire, 10,000 Lbs. Capacity, Rough Terrain, Articulated Frame Steer	
Technical Manual	TM
Lubrication Order	LO, Lube Order
Level Indicator	Sight Gage, Dipstick
Capscrew	Bolt
Safety Wire	Lockwire
Gauge	Gage
Water Temperature Regulator	Thermostat
Servicemeter	Hourmeter
O-Ring	Preformed Packing
XMSN	Transmission
Hydraulic Tank	Hydraulic Reservoir
Air Reservoir	Air Tank
Self-Locking Nut	Locknut
Drive Shaft	Propeller Shaft
Fork Carriage	Boom
Final Filter	Secondary Filter

1-6. Reporting Equipment Improvement Recommendations (EIR). If your M10A Forklift needs improvement, let us know. Send an EIR. You, the user, are the only one who can tell us what you don't like about your equipment. Let us know why you don't like the design. Put it on a SF 368. EIR's should be mailed directly to: Commander, U. S. Army Tank Automotive Command, ATTN: AMSTA-QRT, Warren, MI 48397-5000. A reply will be furnished directly to you.

1-7. Warranty Information. The model, MHE Forklift is warranted by Dresser Industries for 15 months or 1500 hours of operation, whichever occurs first. The warranty starts on the date found on DA Form 2408-9 in the logbook. Report all defects in material or workmanship to your supervisor. He will take appropriate action through your direct support and general support maintenance shop.

For warranty processing information see DA PAM 738-750.