

TM 9-2320-279-24P-2

This Manual In Conjunction with TM 9-2320-279-24P-1 supersedes TM 9-2320-279-20P, TM 9-2320-279-34P-1, TM 9-2320-279-34P-2 and Appendix B of TM 9-2815-224-34&P in their entirety.

TECHNICAL MANUAL

UNIT, DIRECT SUPPORT AND GENERAL SUPPORT MAINTENANCE REPAIR PARTS AND SPECIAL TOOLS LIST

FOR

M977 SERIES, 8 x 8 HEAVY EXPANDED MOBILITY TACTICAL TRUCKS (HEMTT)

MODEL	NSN	EIC
TRUCK, CARGO, WITH WINCH M977	2320-01-097-0260	B2D
TRUCK, CARGO, WITHOUT WINCH M977	2320-01-099-6426	B2G
TRUCK, TANK, FUEL, WITH WINCH M978	2320-01-097-0249	B2C
TRUCK, TANK, FUEL WITHOUT WINCH M978	2320-01-100-7672	B2H
TRUCK, TRACTOR, WITH WINCH, WITHOUT CRANE M983	2320-01-097-0247	B2A
TRUCK, WRECKER-RECOVERY M984	2320-01-097-0248	B2B
TRUCK, WRECKER-RECOVERY M984A1	2320-01-195-7641	B2L
TRUCK, CARGO, WITH WINCH M985	2320-01-097-0261	B2E
TRUCK, CARGO, WITHOUT WINCH M985	2320-01-100-7673	B2J
TRUCK, CARGO, WITH WINCH M985E1	2320-01-194-7032	B2K

APPROVED FOR PUBLIC RELEASE; DISTRIBUTION IS UNLIMITED

HEADQUARTERS, DEPARTMENT OF THE ARMY

15 DECEMBER 1998

TECHNICAL MANUAL

HEADQUARTERS
DEPARTMENT OF THE ARMY
Washington, DC, 15 December 1998

No. 9-2320-279-24P-2
Change 2

**UNIT, DIRECT SUPPORT AND GENERAL SUPPORT MAINTENANCE
REPAIR PARTS AND SPECIAL TOOLS LIST
FOR
M977 SERIES, 8 X 8 HEAVY EXPANDED MOBILITY
TACTICAL TRUCKS (HEMTT)**

MODEL	NSN	EIC
TRUCK, CARGO, WITH WINCH, M977	NSN 2320-01-097-0260	B2D
TRUCK, CARGO, WITHOUT WINCH, M977	NSN 2320-01-099-6426	B2G
TRUCK, TANK, FUEL, WITH WINCH, M978	NSN 2320-01-097-0249	B2C
TRUCK, TANK, FUEL, WITHOUT WINCH, M978	NSN 2320-01-100-7672	B2H
TRUCK, TRACTOR, WITH WINCH, WITHOUT CRANE, M983	NSN 2320-01-097-0247	B2A
TRUCK, WRECKER-RECOVERY, M984	NSN 2320-01-097-0248	B2A
TRUCK, WRECKER-RECOVERY, M984A1	NSN 2320-01-195-7641	B2L
TRUCK, CARGO, WITH WINCH, M985	NSN 2320-01-097-0261	B2E
TRUCK, CARGO, WITHOUT WINCH, M985	NSN 2320-01-100-7673	B2J
TRUCK, CARGO, WITH WINCH, M985E1	NSN 2320-01-194-7032	B2K

Current as of April 1, 1998

REPORTING ERRORS AND RECOMMENDING IMPROVEMENTS

You can help improve this publication. If you find any mistakes or if you know of a way to improve the procedures, please let us know. Submit your DA Form 2028-2 (Recommended Changes to Equipment Technical Publications), through the Internet, on the Army Electronic Product Support (AEPS) Web site. The Internet address is <http://aeps.ria.army.mil>. If you need a password, scroll down and click on "ACCESS REQUEST FORM." The DA Form 2028 is located in the ONLINE FORMS PROCESSING section of the AEPS. Fill out the form and click on SUBMIT. Using this form on the AEPS will enable us to respond quicker to your comments and better manage the DA Form 2028 program. You may also mail, fax, or e-mail your letter, DA Form 2028, or DA Form 2028-2 direct to: Commander, U.S. Army Tank-automotive and Armaments Command, ATTN: AMSTA-AC-NML, Rock Island, IL 61299-7630. The e-mail address is amsta-ac-nml@ria.army.mil. The fax number is DSN 793-0726 or Commercial (309) 782-0726.

APPROVED FOR PUBLIC RELEASE; DISTRIBUTION IS UNLIMITED

This manual is published in two volumes.

TABLE OF CONTENTS

	Page	Illus. Figure
Group 22 Accessory items		
2201 Cargo cover kit	386-1	386
2202 Windshield wiper installation	387-1	387
2202 Wiper control valve	388-1	388
2202 Windshield washer installation	389-1	389
2202 Windshield washer bottle	390-1	390
2202 Air horn and valve	391-1	391
2202 Mirror assembly	392-1	392
2202 Mirror assembly	392A-1	392A

*This Manual in Conjunction with TM 9-2320-279-24P-1 supersedes TM 2320-279-20P, TM 9-2320-279-34P-1, TM 9-2320-279-34P-2, and Appendix B of TM 9-2815-224-34&P in their entirety.

	Page	Illus. Figure
2202 Extension mirror assembly - M984A1	393-1	393
2202 Reflectors	394-1	394
2202 Fuel transfer hose - M978	395-1	395
2202 Fuel transfer hose - M978	396-1	396
2202 Fuel nozzle assembly - M978	397-1	397
2202 Air hose and HAV valve - M978	398-1	398
2207 Heater installation	399-1	399
2207 Heater assembly	400-1	400
2210 Data plates	401-1	401
Group 24 Hydraulic system		
2402 Main hydraulic relief valve	402-1	402
2402 Pressure relief valve - M983	403-1	403
2402 Self recovery winch control valve mounting	404-1	404
2402 Self recovery winch control valve assembly	405-1	405
2402 Priority flow valve - M978 and M984	406-1	406
2402 Self recovery winch selector valve	407-1	407
2402 Heavy duty winch selector valve	408-1	408
2402 Primary pump hydraulic motor control valve mounting - M978	409-1	409
2402 Heavy duty winch manifold - M984A1	410-1	410
2402 Retriever control valve - M984A1	411-1	411
2406 Crane hydraulic filter - M977, M984A1 and M985	412-1	412
2406 Crane hydraulic filter - M977, M984A1 and M985	412A-1	412A
2406 Hydraulic lines and fittings - M977 and M985 with winch	413-1	413
2406 Hydraulic lines and fittings - M977 and M985 without winch	414-1	414
2406 Hydraulic lines and fittings - M978 with winch	415-1	415
2406 Hydraulic lines and fittings - M978 without winch	416-1	416
2406 Hydraulic lines and fittings - M983 without crane	417-1	417
2406 Hydraulic lines and fittings - M984	418-1	418
2406 Hydraulic lines and fittings - M985E1 with winch	419-1	419
2406 Hydraulic lines and fittings - M984A1	420-1	420
Group 33 Special purpose kits		
3301 Engine shipping container	421-1	421
3301 Transmission shipping container	422-1	422
3301 Transfer case shipping container	423-1	423
3303 Arctic heater kit	424-1	424
3303 Arctic kit electrical wiring installation	425-1	425
3303 Arctic battery box assembly	426-1	426
3303 Arctic battery installation	427-1	427
3303 Arctic kit grille	428-1	428
3303 Arctic kit water jackets	429-1	429
3303 Arctic kit water pump mounting	430-1	430
3303 Arctic kit water pump	431-1	431
Group 34 Armament		
3401 Machine gun operator's platform	432-1	432
3401 Machine gun ring	433-1	433
3401 Rifle mounting	434-1	434
Group 47 Gages (non-electrical)		
4702 Air pressure gage	435-1	435
4702 Pressure gage installation - M978	436-1	436

	Page	Illus. Figure
Group 56	Filter-separator	
	5600 Filter-separator installation - M978	437-1 437
	5600 Filter-separator assembly - M978	438-1 438
	5600 Filter-separator assembly - M978	439-1 439
Group 68	Radio	
	6809 Radio installation	440-1 440
Group 72	Dispensing and servicing components - M978	
	7202 Primary pump installation	441-1 441
	7202 Primary pump assembly	442-1 442
	7202 Hydraulic motor	443-1 443
	7202 Auxiliary pump	444-1 444
	7202 Flowmeter installation	445-1 445
	7202 Flowmeter assembly	446-1 446
	7202 Air eliminator	447-1 447
	7202 Flowmeter strainer	448-1 448
	7203 Module piping installation	449-1 449
	7203 Tank piping installation	450-1 450
	7203 V3 suction line valve/V17 gravity valve	451-1 451
	7203 V1 emergency valve installation	452-1 452
	7203 V1 emergency valve assembly	453-1 453
	7203 V1 emergency valve actuator assembly	454-1 454
	7203 V10 bottom load installation	455-1 455
	7203 V10 bottom load valve assembly	456-1 456
	7203 V14 pilot valve	457-1 457
	7203 V13 vent valve	458-1 458
	7203 V19 jet level sensor installation	459-1 459
	7203 V19 jet level sensor assembly	460-1 460
	7203 Venturi	461-1 461
	7203 V18 bulk delivery valve	462-1 462
	7203 V12 Bottom load precheck valve/sampling probe valve	463-1 463
	7203 V2 Bottom load adapter	464-1 464
	7203 V7/V8 reel valve	465-1 465
	7203 V9/V16 check valve	466-1 466
	7203 V5 air actuated flow valve	467-1 467
	7203 V6 fuel/defuel valve	468-1 468
	7203 V11 row regulating valve	469-1 469
	7203 V4 relief valve	470-1 470
Group 91	Chemical, biological, and radiological (CBR) equipment	
	9111 Gas particulate filter unit installation	471-1 471
	9120 M13 decontamination unit installation	472-1 472
	9131 M8 chemical alarm installation	473-1 473
Group 94	9401 Repair kits	Kits-1
Group 95	9501 Bulk materials	Bulk-1
Section III	SPECIAL TOOLS LIST	
	2604 Organizational special tools	474-1 474
	2604 Direct support special tools	475-1 475
	2604 General support special tools	476-1 476
Section IV	CROSS-REFERENCE INDEX	
	National stock number index	I-1
	Part number index	I-129
	Figure and item number index	I-457

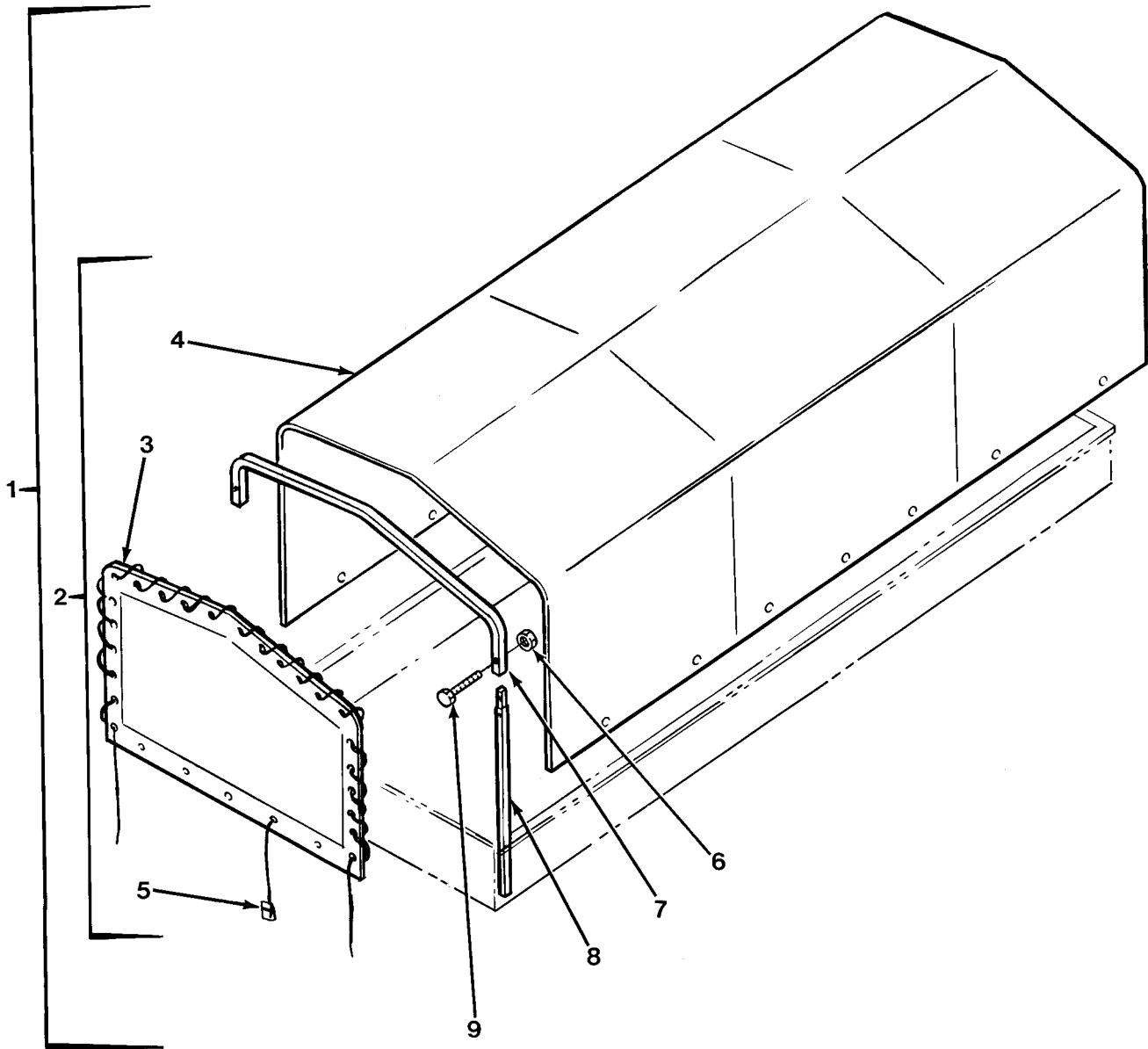


FIG.386 CARGO COVER KIT

SECTION II				TM 9-2320-279-24P, C1	(6)
(1)	(2)	(3)	(4)	(5)	(6)
ITEM	SMR		PART		
NO	CODE	CAGEC	NUMBER	DESCRIPTION AND USABLE ON CODES(UOC)	QTY
				GROUP 22 BODY, CHASSIS, AND HULL ACCESSORY ITEMS	
				GROUP 2201 CANVAS, RUBBER, OR PLASTIC ITEMS	
				FIG.386 CARGO COVER KIT	
*	1	PAOOO 45152	2178120U	COVER,FITTED,VEHICUR GREEN	1
				UOC:H01,H05,H06,H09,H41	
	1	PAOOO 45152	2HR777	COVER,FITTED,VEHICU TAN	1
				UOC:H01,H05,H06,H09,H41	
*	2	PFOZZ 45152	2178110U	.PARTS KIT,CARGO HAT GREEN	1
				UOC:H01,H05,H06,H09,H41	
	2	PFOZZ 45152	2HR780	.PARTS KIT,CARGO HAT TAN	1
				UOC:H01,H05,H06,H09,H41	
*	3	PAOZZ 45152	2178100	..CURTAIN,VEHICULAR GREEN	2
				UOC:H01,H05,H06,H09,H41	
	3	PAOZZ 45152	2HR781	..CURTAIN,VEHICULAR TAN	2
				UOC:H01,H05,H06,H09,H41	
*	4	PAOZZ 45152	2178090	..TARPAULIN GREEN	1
				UOC:H01,H05,H06,H09,H41	
	4	PAOZZ 45152	2HR782	..TARPAULIN TAN	1
				UOC:H01,H05,H06,H09,H41	
*	5	PAOZZ 56101	8690539	..STRAP,WEBBING GREEN	2
				UOC:H01,H05,H06,H09,H41	
	5	PAOZZ 45152	2HR785	..STRAP,WEBBING TAN	2
				UOC:H01,H05,H06,H09,H41	
	6	PAOZZ 96906	MS51922-13	.NUT,SELF-LOCKING,HE	14
				UOC:H01,H05,H06,H09,H41	
*	7	PAOZZ 45152	1322670	.BOW,VEHICULAR TOP GREEN	7
				UOC:H01,H05,H06,H09,H41	
	7	PAOZZ 45152	2HR778	.BOW,VEHICULAR TOP TAN	7
				UOC:H01,H05,H06,H09,H41	
*	8	PAOZZ 45152	1322680W	.STAKE,VEHICLE BODY GREEN	14
				UOC:H01,H05,H06,H09,H41	
	8	PAOZZ 45152	2HR779	.STAKE,VEHICLE BODY TAN	14
				UOC:H01,H05,H06,H09,H41	
	9	PAOZZ 45152	1771HX1	.BOLT,MACHINE	14
				UOC:H01,H05,H06,H09,H41	

END OF FIGURE