

# **TM 9-2320-364-24P-1**

This manual in conjunction with TM 9-2320-364-24P-2 supersedes  
TM 9-2320-364-24P, dated 28 July 1995, including all changes.

---

## **TECHNICAL MANUAL**

### **UNIT, DIRECT SUPPORT AND GENERAL SUPPORT MAINTENANCE REPAIR PARTS AND SPECIAL TOOLS LIST**

**FOR**

### **PALLETIZED LOAD SYSTEM (PLS) M1074/M1075**

**NSN 2320-01-304-2277, EIC: B4G  
NSN 2320-01-304-2278, EIC: B4H**

---

#### **DISTRIBUTION STATEMENT:**

**Approved for public release; distribution is unlimited.**

---

---

**HEADQUARTERS, DEPARTMENT OF THE ARMY**

**AUGUST 1999**

TECHNICAL MANUAL

No. 9-2320-364-24P-1

HEADQUARTERS  
DEPARTMENT OF THE ARMY  
Washington, D.C. 1 August 1999

**UNIT, DIRECT SUPPORT AND  
GENERAL SUPPORT MAINTENANCE  
REPAIR PARTS AND SPECIAL TOOLS LIST  
FOR  
PALLETIZED LOAD SYSTEM  
(PLS) M1074/M1075**

**NSN 2320-01-304-2277, EIC: B4G  
NSN 2320-01-304-2278, EIC: B4H**

Current as of 15 December 1998

**REPORTING ERRORS AND RECOMMENDING IMPROVEMENTS**

You can help improve this publication. If you find any mistakes or if you know of a way to improve the procedures, please let us know. Submit your DA Form 2028 (Recommended Changes to Publications and Blank Forms), through the Internet, on the Army Electronic Product Support (AEPS) website. The Internet address is <http://aeps.ria.army.mil>. If you need a password, scroll down and click on "ACCESS REQUEST FORM." The DA Form 2028 is located in the ONLINE FORMS PROCESSING section of the AEPS. Fill out the form and click on SUBMIT. Using this form on the AEPS will enable us to respond quicker to your comments and better manage the DA Form 2028 program. You may also mail, fax or email your letter, DA Form 2028, or DA Form 2028-2, located at the back of this manual direct to: Commander, U.S. Army Tank-automotive and Armaments Command, ATTN: AMSTA-AC-NML, Rock Island, IL 61299-7630. The email address is [amsta-ac-nml@ria.army.mil](mailto:amsta-ac-nml@ria.army.mil). The fax number is DSN 793-0726 or Commercial (309) 782-0726. A reply will be furnished to you.

This manual is published in two volumes.

**TABLE OF CONTENTS**

	<b>Page</b>	<b>Illus/ Figure</b>
Section I. INTRODUCTION	1	
Section II. REPAIR PARTS LIST	1-1	
Group 01 Engine		
0100 Dressed Engine Assembly with Container.....	1-1	1
0100 Engine Lifting Eyes and Brackets.....	2-1	2

**Approved for public release; distribution is unlimited.**

\*This manual in conjunction with TM 9-2320-364-24P-2 supersedes TM 9-2320-364-24P, dated 28 July 1995, including all changes.

## TABLE OF CONTENTS (Continued)

		Page	Illus/ Figure
Group 01	Engine (Cont)		
	0101 Cylinder Block Assembly .....	3-1	3
	0101 Cylinder Block Assembly End Plates .....	4-1	4
	0101 Cylinder Block Assembly Pins and Plugs .....	5-1	5
	0101 Air Box Covers and Drains .....	6-1	6
	0101 Cylinder Head Assembly .....	7-1	7
	0101 Cylinder Block Assembly Cylinder Liner .....	8-1	8
	0102 Crankshaft, Main Bearing, Pulley, Vibration Damper and Oil Pump Drive Gear .....	9-1	9
	0102 Vibration Damper and Front Balance Cover .....	10-1	10
	0102 Crankcase Front Cover and Oil Seal .....	11-1	11
	0103 Flywheel Housing .....	12-1	12
	0103 Rear Oil Seal and Flexplate Assembly .....	13-1	13
	0104 Piston and Connecting Rod .....	14-1	14
	0105 Rocker Cover and Gasket .....	15-1	15
	0105 Exhaust Valve Bridge, Rocker Arm, Valve and Cam Follower/Pushrod .....	16-1	16
	0105 Camshaft Assembly .....	17-1	17
	0105 Idler Gear Assembly .....	18-1	18
	0106 Oil Filter Assembly .....	19-1	19
	0106 Oil Pan/Gasket .....	20-1	20
	0106 Breather and Hoses .....	21-1	21
	0106 Oil Filler and Dipstick .....	22-1	22
	0106 Oil Pump Assembly, Pressure Regulator and Relief Valve .....	23-1	23
	0106 Engine Oil Cooler Assembly .....	24-1	24
	0106 Engine Oil Sampling Valve .....	25-1	25
	0108 Exhaust Manifold .....	26-1	26
	0112 Engine Brake Retarder .....	27-1	27
Group 03	Fuel System		
	0301 Fuel Injector .....	28-1	28
	0302 Fuel Pump Assembly and Fittings .....	29-1	29
	0302 Electric Fuel Pump and Fittings .....	30-1	30
	0304 Air Cleaner Assembly and Air Filter .....	31-1	31
	0304 Air Intake Ducting .....	32-1	32
	0305 Blower Components .....	33-1	33
	0305 Blower Assembly Housing .....	34-1	34
	0305 Blower Drive Assembly .....	35-1	35
	0305 Turbocharger Mounting .....	36-1	36
	0305 Turbocharger Assembly .....	37-1	37
	0306 Fuel Tank Assembly .....	38-1	38
	0306 Check Valve, Fuel Lines and Fittings .....	39-1	39
	0306 Engine Fuel Lines and Fittings .....	40-1	40
	0306 Engine Fuel Junction Block Lines and Fittings .....	41-1	41
	0306 Fuel Water Separator Lines and Fittings .....	42-1	42
	0306 Auxiliary Fuel Tank and Accessories .....	43-1	43
	0309 Secondary Fuel Filter .....	44-1	44
	0309 Fuel/Water Separator .....	45-1	45
	0311 Ether Starting Aid .....	46-1	46
Group 04	Exhaust System		
	0401 Muffler and Pipes .....	47-1	47
Group 05	Cooling System		
	0501 Radiator .....	48-1	48
	0501 Fan Shrouds and Brackets .....	49-1	49
	0503 Thermostats, Cooling System Hoses and Tubes .....	50-1	50
	0503 Cooling System Hoses and Tubes .....	51-1	51
	0503 Aftercooler .....	52-1	52
	0504 Water Pump Assembly .....	53-1	53
	0504 Water Pump Drive Gear .....	54-1	54

## TABLE OF CONTENTS (Continued)

		Page	Illus/ Figure
Group 05	Cooling System (Cont)		
	0505 Fan and Fan Drive Motor .....	55-1	55
Group 06	Electrical System		
	0601 Alternator Assembly .....	56-1	56
	0601 Alternator Belts and Mounting .....	57-1	57
	0602 Power Distribution Assembly .....	58-1	58
	0603 Starter Motor Mounting .....	59-1	59
	0603 Starter Motor .....	60-1	60
	0607 Instrument Panel Gages Wiring Harness .....	61-1	61
	0607 Instrument Panel Rectifiers .....	62-1	62
	0607 Side Panel Lights and Rectifier .....	63-1	63
	0607 Speedometer/Odometer, Tachometer/Hourmeter and Gages .....	64-1	64
	0607 Odometer, Alarms and Warning Lights .....	65-1	65
	0607 Instrument Panel Switches .....	66-1	66
	0607 Instrument Panel Appliques .....	67-1	67
	0607 Side Panel Switches .....	68-1	68
	0607 Instrument Panel Switch Harness .....	69-1	69
	0607 STE/ICE Switch .....	70-1	70
	0607 LHS Rotary Switch .....	71-1	71
	0607 Electronic Control Assembly Circuit Breakers .....	72-1	72
	0607 CTIS Pressure Gage Lamp .....	73-1	73
	0608 Turn Signal and Emergency Flasher Switch .....	74-1	74
	0608 Isolator, Engine Starter and Ether Starting Aid Switches .....	75-1	75
	0608 Crane Junction Box Assembly .....	76-1	76
	0608 Crane Junction Box, Rectifiers and Terminal Block .....	77-1	77
	0608 Crane Junction Box Remote Control Cables .....	78-1	78
	0608 Crane Junction Box Outrigger Proximity Sensors .....	79-1	79
	0608 Crane Junction Box Power and Overload Lockout Cables .....	80-1	80
	0608 Crane Junction Box Solenoid Cables .....	81-1	81
	0608 Crane Junction Box Circuit Breaker Cable .....	82-1	82
	0608 Overload Shutdown System .....	83-1	83
	0608 Crane Hoist Proximity Switch .....	84-1	84
	0608 LHS Proximity Switch .....	85-1	85
	0608 LHS Control Assembly, Fuse, and Relay, Cab .....	86-1	86
	0608 Main Junction Box (LHS) .....	87-1	87
	0608 Main Junction Box (LHS) Wiring Harness .....	88-1	88
	0608 Junction Box (LHS) .....	89-1	89
	0608 Junction Box (LHS) Wiring Harness .....	90-1	90
	0608 Master Electrical Disconnect .....	91-1	91
	0609 Headlight Assembly .....	92-1	92
	0609 Composite Front Light .....	93-1	93
	0609 Blackout Light .....	94-1	94
	0609 Cab Marker Light Assembly .....	95-1	95
	0609 Cab Side Marker Lights .....	96-1	96
	0609 Dome Light Assembly .....	97-1	97
	0609 Rear Light Bar Assembly .....	98-1	98
	0609 Rear Side Marker Lights .....	99-1	99
	0609 Composite Tail Light .....	100-1	100
	0609 Reverse Light .....	101-1	101
	0609 Work Lamps and Harness Assembly .....	102-1	102
	0610 Engine Electronic Control Module and Cold Plate .....	103-1	103
	0610 Engine Throttle Sensor .....	104-1	104
	0610 Engine Temperature Sensor (Oil) and Oil Pressure Sensor .....	105-1	105
	0610 Engine Sensors and Switches .....	106-1	106
	0610 STE/ICE Engine Sensors .....	107-1	107
	0610 STE/ICE Fuel/Water Separator Switch .....	108-1	108

## TABLE OF CONTENTS (Continued)

	Page	Illus/ Figure
Group 06 Electrical System (Cont)		
0610 Transmission Electronic Control Unit .....	109-1	109
0610 Electronic Proportional Analog Control (EPAC) .....	110-1	110
0610 Magnetic Speed Sensor .....	111-1	111
0610 Transfer Case Interlock Switch and Sending Unit .....	112-1	112
0610 Tachometer Drive Assembly .....	113-1	113
0611 Horn .....	114-1	114
0611 Reverse Alarm and Reverse Aux Wiring Harness .....	115-1	115
0612 Batteries and Cables .....	116-1	116
0612 Battery Box Assembly .....	117-1	117
0613 Electronic Control Box (ECB) Wiring Harness .....	118-1	118
0613 ECB Wiring Harness ECB/ATEC Harness, DDEC and Hazard Connectors .....	119-1	119
0613 ECB Wiring Harness ATEC, Cab, Engine Throttle and 6.8K Resistor Connectors .....	120-1	120
0613 ECB Wiring Harness Heater, 24V Trailer and ATEC/ECU Connectors .....	121-1	121
0613 ECB Wiring Harness Cab Harness, Engine Shutdown Circuit Breaker, ECB Light Harness and Arctic Pump Connectors .....	122-1	122
0613 Electronic Control Assembly Relays and Switches .....	123-1	123
0613 Electronic Control Assembly Diode Assembly, 6.8K Resistor and Ferrite Beads .....	124-1	124
0613 ECB/Light Wiring Harness .....	125-1	125
0613 ECB/ATEC Wiring Harness .....	126-1	126
0613 Electronic Control Assembly Grounding Lugs .....	127-1	127
0613 CTIS Cab Wiring Harness .....	128-1	128
0613 Cab Wiring Harness .....	129-1	129
0613 Cab Wiring Harness 22 Pin Connectors .....	130-1	130
0613 Cab Wiring Harness Side Panel Connections .....	131-1	131
0613 Cab Wiring Harness Light Connectors .....	132-1	132
0613 Cab Wiring Harness DDEC, Gages, Turn Signal and CTIS Connections .....	133-1	133
0613 Cab Wiring Harness Wiper Motor, LHS, Chemical Detector and Alarm, ECB Light and DDEC Connectors .....	134-1	134
0613 Brake Treadle Valve Wire Assembly and Cab Wiring Harness Brake Connections .....	135-1	135
0613 Cab Wiring Harness Starter Switch Connectors and Vernier Control .....	136-1	136
0613 NATO Connector .....	137-1	137
0613 Reverse Polarity Wire Harness .....	138-1	138
0613 Battery Disconnect Wire Harness .....	139-1	139
0613 Voltage Regulator Wire Harness .....	140-1	140
0613 CTIS Chassis Wiring Harness .....	141-1	141
0613 Chassis Wiring Harness .....	142-1	142
0613 24V Trailer Wiring Harness .....	143-1	143
0613 Rear Light Group Wiring Harness .....	144-1	144
0613 Chassis Electric Harness Clamps .....	145-1	145
0613 Engine Wiring Harness .....	146-1	146
0613 Engine Wiring Harness Clamps and Ground Straps .....	147-1	147
0613 Engine Brake and Fuel Injector Wiring Harnesses .....	148-1	148
0613 DDEC Engine Power Wiring Harness .....	149-1	149
0613 DDEC Battery Power Wiring Harness .....	150-1	150
0613 STE/ICE Chassis Wiring Harness .....	151-1	151
0613 STE/ICE Engine Wiring Harness .....	152-1	152
0613 STE/ICE Alternator Wiring Harness .....	153-1	153
0613 Fan Control Solenoid Valve Wiring Harness .....	154-1	154
0613 LHS Main Wiring Harness .....	155-1	155
0613 LHS Cab Wiring Harness .....	156-1	156
0613 Self Recovery Winch Wiring Harness .....	157-1	157

## TABLE OF CONTENTS (Continued)

		Page	Illus/ Figure
Group 07	Transmission		
	0705 Transmission Solenoids, Harness and Wiring .....	158-1	158
	0705 Transmission Shift Selector .....	159-1	159
	0705 Cab/Transmission Wiring Harness .....	160-1	160
	0710 Flywheel .....	161-1	161
	0710 Torque Converter Housing .....	162-1	162
	0710 Torque Converter Stator and Pump .....	163-1	163
	0710 Dressed Transmission Assembly with Container, Dipstick and Yoke .....	164-1	164
	0710 Transmission Housing and Oil Pan/Gasket .....	165-1	165
	0710 Output Shaft Assembly .....	166-1	166
	0710 Rear Transmission Cover Assembly and Output Seal .....	167-1	167
	0710 Main Shaft Assembly, Carrier Assemblies and Rear and First Planetary .....	168-1	168
	0713 First Clutch and Adapter Housing .....	169-1	169
	0713 Forward Clutch and Input Shaft .....	170-1	170
	0713 Second and Reverse Clutch .....	171-1	171
	0713 Fifth Clutch .....	172-1	172
	0713 Fourth Clutch, Third Clutch and Center Support .....	173-1	173
	0714 Control Valve Assembly .....	174-1	174
	0714 Front Plate Assembly .....	175-1	175
	0714 First Shift Valve and First Trimmer Valve Assemblies .....	176-1	176
	0721 Oil Pump Assembly .....	177-1	177
	0721 External Filter Element and Oil Cooler Lines .....	178-1	178
	0721 Internal Filter Element, Low Oil Sensor Assembly, Lube Pressure Switch and Oil Baffle .....	179-1	179
	0721 Transmission Oil Sampling Valve .....	180-1	180
Group 08	Transfer and Final Drive Assemblies		
	0801 Dressed Transfer Case Assembly with Container and Yokes .....	181-1	181
	0801 Transfer Case Assembly Support .....	182-1	182
	0801 Transfer Case Assembly .....	183-1	183
	0801 Upper Shaft Assembly .....	184-1	184
	0801 Center Shaft Assembly .....	185-1	185
	0801 Rear and Differential Shaft Assemblies .....	186-1	186
	0801 Front Shaft Assembly .....	187-1	187
	0801 Differential Assembly .....	188-1	188
	0803 Upper and Lower Shift Rod Assemblies and Differential Air Chamber .....	189-1	189
	0803 Shift Control and Shift Control Cable .....	190-1	190
	0804 Lube Pump .....	191-1	191
	0804 Lube Hoses and Breather .....	192-1	192
Group 09	Propeller, Propeller Shafts, Universal Joints, Coupler and Clamp Assembly		
	0900 Propeller Shafts and Universal Joints .....	193-1	193
Group 10	Front Axle		
	1000 No. 1 and No. 2 Dressed Axle Assemblies .....	194-1	194
	1000 No. 1 Axle Housing .....	195-1	195
	1000 No. 2 Axle Housing .....	196-1	196
	1002 No. 1 Axle Differential Assembly, Flange Assemblies and Oil Seals .....	197-1	197
	1002 No. 2 Axle Differential and Rear Output Assembly, Flange Assemblies and Oil Seals .....	198-1	198
	1002 No. 2 Axle Differential and Case .....	199-1	199
	1002 Front Tandem Locking Cylinder Lines and Fittings .....	200-1	200
	1003 No. 1 and No. 2 Axle Planetary Hub Gears .....	201-1	201
	1004 Front Tandem Constant Velocity, Pivot and Spindle Assembly .....	202-1	202
Group 11	Rear Axle		
	1100 No. 3, No. 4 and No. 5 Dressed Axle Assemblies .....	203-1	203
	1100 No. 3 Axle Housing .....	204-1	204
	1100 No. 4 Axle Housing .....	205-1	205
	1100 No. 5 Axle Housing .....	206-1	206

## TABLE OF CONTENTS (Continued)

		Page	Illus/ Figure
Group 11	Rear Axle(Cont)		
	1100 No. 3 and No. 4 Axle Shafts and Spindle Assembly .....	207-1	207
	1102 No. 3 Axle Differential Assembly, Flange Assemblies and Locking Cylinders ..	208-1	208
	1102 No. 3 Axle Differential Assembly Front Housing, Input Shaft and Carrier Assembly .....	209-1	209
	1102 No. 3 Axle Differential Rear Housing, Differential and Bevel Gear, and Ring and Pinion Assembly .....	210-1	210
	1102 No. 3 Axle Rear Output Assembly, Flange Assembly and Oil Seal .....	211-1	211
	1102 No. 4 Axle Differential and Rear Output Assemblies, Flange Assemblies and Oil Seals .....	212-1	212
	1102 No. 4 Axle Differential and Housing .....	213-1	213
	1102 No. 5 Axle Differential Assembly, Flange Assemblies and Oil Seals .....	214-1	214
	1102 No. 3 Axle Locking Cylinder Lines and Fittings .....	215-1	215
	1102 Rear Tandem Axle Locking Cylinder Lines and Fittings .....	216-1	216
	1103 No. 3, No. 4 and No. 5 Axle Planetary Hub Gears .....	217-1	217
	1104 No. 5 Constant Velocity, Pivot and Spindle Assembly .....	218-1	218
Group 12	Brakes		
	1202 No. 1 and No. 2 Axle Brakes, Brake Assemblies and Shoes .....	219-1	219
	1202 No. 3, No. 4 and No. 5 Axle Brakes, Brake Assemblies and Shoes .....	220-1	220
	1206 Pneumatic Brake Valve .....	221-1	221
	1206 Pneumatic Brake Valve Fittings and Switches .....	222-1	222
	1208 No. 1 Axle Air Brake Chambers and Air System Lines and Fittings .....	223-1	223
	1208 No. 1 Axle Air Manifold and Fittings .....	224-1	224
	1208 No. 2 Axle Air Brake Chambers and Air System Lines and Fittings .....	225-1	225
	1208 No. 2 Axle Air Manifold and Fittings .....	226-1	226
	1208 No. 3 Axle Air Brake Chambers and Air System Lines and Fittings .....	227-1	227
	1208 No. 3 Axle Air Manifold and Fittings .....	228-1	228
	1208 No. 4 Axle Air Brake Chambers and Air System Lines and Fittings .....	229-1	229
	1208 No. 4 Axle Air Manifold and Fittings .....	230-1	230
	1208 No. 5 Axle Air Brake Chambers and Air System Lines and Fittings .....	231-1	231
	1208 No. 5 Axle Air Manifold and Fittings .....	232-1	232
	1208 Air Dryer Assembly .....	233-1	233
	1208 Air Dryer and Aftercooler Filters and Seals .....	234-1	234
	1208 Coalescing Filter Element and Seals .....	235-1	235
	1208 Air Dryer Lines and Fittings .....	236-1	236
	1208 Air Control Valve .....	237-1	237
	1208 Windshield Washer Air Line Regulator .....	238-1	238
	1208 Cab Air Switches .....	239-1	239
	1208 Air Horn System .....	240-1	240
	1208 Cab Air Manifold and Four Station Solenoid Valve .....	241-1	241
	1208 Cab Air Harness .....	242-1	242
	1208 Cab Air Hoses .....	243-1	243
	1208 Tunnel Air Line Fittings .....	244-1	244
	1208 Front Air Reservoir .....	245-1	245
	1208 Right Side Air Reservoirs .....	246-1	246
	1208 Left Side Air Reservoirs .....	247-1	247
	1208 Front Gladhand and Service Valve Relay No. 1 .....	248-1	248
	1208 Spring and Service Valves, Load Sensing Valves, Lines and Fittings .....	249-1	249
	1208 Spring Brake and Quick Release Valves .....	250-1	250
	1208 Air Spring Connection and Exhaust Air Manifold .....	251-1	251
	1208 Air Manifold and Ball Valve .....	252-1	252
	1208 Service Relay Valve No. 2, Quick Release Valve and Spring Relay Valve No. 1	253-1	253
	1208 Main Air Harness Axle and Tractor Protection Valve Hoses and Fittings .....	254-1	254
	1208 Cab Air Manifold to Double Check Valves and Brake Valve Hoses .....	255-1	255
	1208 Main Air Harness Load Sensing Valve Hoses .....	256-1	256

## TABLE OF CONTENTS (Continued)

		Page	Illus/ Figure
Group 12	Brakes(Cont)		
	1208 Front Quick Release Valve, Spring Brake Valve and No. 1 Service Relay Valve Hoses .....	257-1	257
	1208 Main Air Harness Spring Valve Relay No. 1 and No. 2 and Chassis Air Manifold Hoses .....	258-1	258
	1208 Air Harness, Manifold, Reservoir, Spring Brake Valve, Relay Valve No. 3 and Spring Relay Valve Hoses .....	259-1	259
	1208 Main Air Harness Reservoir Hoses .....	260-1	260
	1208 Transfer Case Air Lines and Fittings .....	261-1	261
	1209 Air Compressor .....	262-1	262
	1209 Air Compressor Cylinder Head .....	263-1	263
	1209 Air Compressor Cylinder Block .....	264-1	264
	1209 Air Compressor Crankcase .....	265-1	265
	1209 Air Compressor Lines and Fittings .....	266-1	266
	1209 Air Governor Assembly .....	267-1	267
	1211 Rear Glad Hand Connection and Tractor Protection Valve .....	268-1	268
	1211 Hand Brake Valve .....	269-1	269
Group 13	Wheels and Tracks		
	1311 Wheel Assembly .....	270-1	270
	1311 Wheel Hub Assembly, Brake Drum and CTIS Axle Seals .....	271-1	271
	1311 Front Tandem CTIS Lines and Fittings .....	272-1	272
	1311 Rear Tandem CTIS Lines and Fittings .....	273-1	273
	1311 CTIS Wheel Valve .....	274-1	274
	1311 Front Tandem CTIS Installation .....	275-1	275
	1311 Rear Tandem CTIS Installation .....	276-1	276
	1311 No. 3 Axle CTIS Installation .....	277-1	277
	1311 Front CTIS Control Manifold Fittings and Mounting .....	278-1	278
	1311 Rear CTIS Control Manifold Fittings and Mounting .....	279-1	279
	1311 CTIS Controller Module .....	280-1	280
	1311 CTIS Front and Rear Control Manifold .....	281-1	281
	1313 Tire .....	282-1	282
Group 14	Steering		
	1401 Steering Wheel and Steering Column Mounting .....	283-1	283
	1401 Steering Column Shafts .....	284-1	284
	1401 Steering Column Shafts and 90 Degree Gearbox Mounting .....	285-1	285
	1401 Front Tandem Drag Links and Inter gear Link .....	286-1	286
	1401 Rear Drag Link .....	287-1	287
	1401 Steering Shafts .....	288-1	288
	1401 Tie Rods .....	289-1	289
	1401 90 Degree Gearbox .....	290-1	290
	1401 2.21:1 Gear Reducer .....	291-1	291
	1407 Front and Rear Steering Gear Assemblies .....	292-1	292
	1407 Intermediate Steering Gear Assembly .....	293-1	293
	1410 Emergency Steering Hydraulic Pump .....	294-1	294
	1410 Emergency Steering Valve .....	295-1	295
	1411 Steering Hydraulic Lines and Fittings .....	296-1	296
	1411 Steering Hydraulic Pump Lines and Fittings .....	297-1	297
	1411 Rear Steering Hydraulic Lines and Fittings .....	298-1	298
	1411 Steering Hydraulic Line Clamps .....	299-1	299
	1413 Steering Reservoir Assembly .....	300-1	300
	1413 Steering Hydraulic Filter .....	301-1	301
	1413 Steering Hydraulic Manifold .....	302-1	302
	1413 Steering Hydraulic Manifold Fittings, Couplings and Switches .....	303-1	303
Group 15	Frame, Towing Attachments, Drawbars and Articulation Systems		
	1501 Cab Step Assembly .....	304-1	304
	1501 Skid Plate .....	305-1	305



## TABLE OF CONTENTS (Continued)

		Page	Illus/ Figure
Group 15	Frame, Towing Attachments, Drawbars and Articulation Systems (Cont)		
	1501 Power Frame Module .....	306-1	306
	1501 Front Cab Support .....	307-1	307
	1501 Rear Cab Support and Front Crossmember .....	308-1	308
	1501 Front Tandem Crossmember and Gussets .....	309-1	309
	1501 Front Tandem Spring Hangers .....	310-1	310
	1501 Intermediate Crossmember .....	311-1	311
	1501 No. 3 Axle Air Bag Brackets and Crossmember .....	312-1	312
	1501 Rear Tandem Crossmember .....	313-1	313
	1501 Rear Hard Lift Assembly .....	314-1	314
	1501 Platform Assembly .....	315-1	315
	1501 Side Platform Tread Assembly .....	316-1	316
	1501 Rear Light Shields and Trailer Electric Bracket .....	317-1	317
	1501 Crane and SRW Electrical Connector Mounting .....	318-1	318
	1501 LHS Roller and Roller Mounting Bracket .....	319-1	319
	1501 Rear Crossmember .....	320-1	320
	1503 Self Guided Coupler and Towing Shackles .....	321-1	321
	1504 Tire Carrier and Davit .....	322-1	322
Group 16	Springs and Shock Absorbers		
	1601 Front Tandem Springs and Spring Hangers .....	323-1	323
	1601 No. 3 Axle Suspension Air Bags .....	324-1	324
	1601 Rear Tandem Springs and Spring Hangers .....	325-1	325
	1604 Shock Absorbers and Bushings .....	326-1	326
	1605 Front Tandem Equalizer Beams .....	327-1	327
	1605 Rear Tandem Equalizer Beams .....	328-1	328
	1605 No. 3 Axle Air Suspension Beam Assembly .....	329-1	329
	1605 Front Tandem Torque Rods .....	330-1	330
	1605 No. 3 Axle Torque Rods .....	331-1	331
	1605 Rear Tandem Torque Rods .....	332-1	332
Group 18	Body, Cab, Hood and Hull		
	1801 PLS Cab Assembly .....	333-1	333
	1801 Cab Basic Assembly .....	334-1	334
	1801 Cab Assembly Mounting .....	335-1	335
	1801 Cab Door and Mounting .....	336-1	336
	1801 Cab Door Inner Skin and Frame .....	337-1	337
	1801 Cab Door Locks .....	338-1	338
	1801 Grill Assembly and Side Skins .....	339-1	339
	1801 Left Side Engine Cover .....	340-1	340
	1801 Engine Cover Access Panel .....	341-1	341
	1801 Right Side Engine Cover .....	342-1	342
	1801 Back Panel .....	343-1	343
	1801 Cab Insulation and Access Panel .....	344-1	344
	1801 Instrument, Air Dash, Side Panels and Transmission Shift Console .....	345-1	345
	1801 Electronic Control Assembly Box .....	346-1	346
	1801 Cab Wiring Harness Brackets and Cover Plate .....	347-1	347
	1802 Windshield Glass and Peep Window .....	348-1	348
	1802 Cab Door Glass .....	349-1	349
	1802 Right Fender Assembly .....	350-1	350
	1802 Left Fender Assembly .....	351-1	351
	1802 Front Fender Skirts .....	352-1	352
	1802 Rear Fender Assembly .....	353-1	353
	1802 Mud Flaps .....	354-1	354
	1806 Seat Assembly, Seat Support and Seat Belt .....	355-1	355
	1806 Sun Visor Assembly, Window Guard, Footrest Platform and Cab Trim .....	356-1	356
	1808 Cab Stowage Box and First Aid Kit Bracket .....	357-1	357
	1808 Stowage Box .....	358-1	358

## TABLE OF CONTENTS (Continued)

		Page	Illus/ Figure
Group 18	Body, Cab, Hood and Hull (Cont)		
	1808 Crane Stowage Box .....	359-1	359
	1808 Rifle Stowage Brackets .....	360-1	360
	1808 Ladder Supports .....	361-1	361
Group 20	Hoist, Winch, Capstan, Windlass, Power Control Unit and Power Take-Off		
	2001 Basic Crane, Cable and Mounting .....	362-1	362
	2001 Crane Boom Assembly Base Section .....	363-1	363
	2001 Crane Boom Assembly Inner Mid Section .....	364-1	364
	2001 Crane Boom Assembly Outer Mid Section .....	365-1	365
	2001 Crane Boom Assembly Fly Section .....	366-1	366
	2001 Crane Boom Assembly Structural Section .....	367-1	367
	2001 Crane Boom Assembly Chain Section .....	368-1	368
	2001 Mast Erection Cylinder .....	369-1	369
	2001 Lift Cylinder Assembly .....	370-1	370
	2001 Telescope Cylinder Assembly .....	371-1	371
	2001 Mast Assembly .....	372-1	372
	2001 Tension Link Assembly .....	373-1	373
	2001 Hoist Assembly .....	374-1	374
	2001 Hoist Assembly and Tension Load Cell Mounting .....	375-1	375
	2001 Hydraulic Hoist Motor .....	376-1	376
	2001 Hoist Motor Valve Assembly .....	377-1	377
	2001 Hoist Carrier Assembly (Primary) .....	378-1	378
	2001 Hoist Carrier Assembly (Secondary) .....	379-1	379
	2001 Hoist Brake Assembly .....	380-1	380
	2001 Hoist Cable Follower and Guide .....	381-1	381
	2001 Turntable and Bearing .....	382-1	382
	2001 Crane Mounting Hydraulic Lines and Fittings .....	383-1	383
	2001 Crane Hydraulic Component Mounting, Accumulator and Solenoid Control Valves .....	384-1	384
	2001 Crane Hydraulic Pipes, Tubes, Hoses and Fittings .....	385-1	385
	2001 Swing Drive Hydraulic Pipes, Tubes, Hoses and Fittings .....	386-1	386
	2001 Lift Cylinder Hydraulic Pipes, Tubes, Hoses and Fittings .....	387-1	387
	2001 Erection Cylinder Hydraulic Pipes, Tubes, Hoses and Fittings .....	388-1	388
	2001 Hoist Hydraulic Pipes, Tubes, Hoses and Fittings .....	389-1	389
	2001 Telescoping Cylinder Hydraulic Pipes, Tubes, Hoses and Fittings .....	390-1	390
	2001 Outrigger Hydraulic Pipes, Tubes, Hoses and Fittings .....	391-1	391
	2001 Plumbing and Tube Support .....	392-1	392
	2001 Swing Drive Assembly, Orbit Motor and Relief Valve Assembly .....	393-1	393
	2001 Swing Drive Gear Reducer and Brake .....	394-1	394
	2001 Hand Pump .....	395-1	395
	2001 Solenoid Valve Assembly .....	396-1	396
	2001 Two Function Valve Manifold .....	397-1	397
	2001 Two Function Valve Left Outrigger Control Valve .....	398-1	398
	2001 Two Function Valve Right Outrigger Control Valve .....	399-1	399
	2001 Three Function Valve Manifold .....	400-1	400
	2001 Three Function Valve Outrigger Control Valves .....	401-1	401
	2001 Three Function Valve Mast Erection Control Valve .....	402-1	402
	2001 Four Function Valve Body .....	403-1	403
	2001 Four Function Valve Tele/Swing Manifold .....	404-1	404
	2001 Four Function Valve Center Manifold .....	405-1	405
	2001 Four Function Valve Lift/Hoist Manifold .....	406-1	406
	2001 Four Function Valve Swing Control Assembly .....	407-1	407
	2001 Four Function Valve Telescoping Control Assembly .....	408-1	408
	2001 Four Function Valve Lift Control Assembly .....	409-1	409
	2001 Four Function Valve Hoist Control Assembly .....	410-1	410
	2001 Hoist Block Assembly .....	411-1	411

## TABLE OF CONTENTS (Continued)

		Page	Illus/ Figure
Group 20	Hoist, Winch, Capstan, Windlass, Power Control Unit and Power Take-Off (Cont)		
	2001 Remote Control Box .....	412-1	412
	2001 Remote Control Box Wiring Harness .....	413-1	413
	2001 Remote Control Box Cable Assembly .....	414-1	414
	2001 Self Recovery Winch Kit .....	415-1	415
	2001 Self Recovery Winch Assembly, Winch Motor and Cable .....	416-1	416
	2001 Self Recovery Winch Counter Balance Valve .....	417-1	417
	2001 Self Recovery Winch Hydraulic Controls .....	418-1	418
	2001 Self Recovery Winch Hydraulic Pipes, Tubes and Fittings .....	419-1	419
	2001 Self Recovery Winch .....	420-1	420
	2001 Self Recovery Winch Brake .....	421-1	421
	2001 Front Tensioner Assembly .....	422-1	422
	2001 Front Cable Guide .....	423-1	423
	2001 Rear Tensioner Assembly .....	424-1	424
	2001 Rear Cable Guide .....	425-1	425
	2001 Self Recovery Winch Snatch Block .....	426-1	426
	2006 Crane Outrigger Leg Cylinder .....	427-1	427
	2006 Crane Outrigger Leg Mounting .....	428-1	428
	2006 Crane Outrigger Pad Assembly .....	429-1	429
Group 22	Body, Chassis and Hull Accessory Items		
	2202 Cab Door Reflectors .....	430-1	430
	2202 Rear Fender Reflectors .....	431-1	431
	2202 Rear Mud Flap Reflectors .....	432-1	432
	2202 Rear Roller Assembly Reflectors .....	433-1	433
	2202 Mirror Assembly .....	434-1	434
	2202 Wiper Motor .....	435-1	435
	2202 Wiper Arm Assembly .....	436-1	436
	2202 Windshield Washer and Washer Reservoir .....	437-1	437
	2202 Beacon Bracket .....	438-1	438
	2202 Heater, Heater Motor and Core .....	439-1	439
	2202 Heater Control Panel and Cables .....	440-1	440
	2202 Heater Hoses and Fittings .....	441-1	441
	2202 Fresh Air Box and Air Hoses .....	442-1	442
	2210 Cab Data Plates .....	443-1	443
	2210 Side Panel Data Plates .....	444-1	444
	2210 Front Data Plates .....	445-1	445
	2210 Engine Cover and Spare Tire Carrier Data Plates .....	446-1	446
	2210 Gladhand Data Plates .....	447-1	447
	2210 Crane Data Plates and Decals .....	448-1	448
	2210 LHS Data Plates .....	449-1	449
	2210 Chassis and Spare Tire Carrier Data Plates .....	450-1	450
	2210 Self Recovery Winch Data Plate .....	451-1	451
	2210 Circuit Breaker and Relay Data Plates .....	452-1	452
Group 24	Hydraulic and Fluid Systems		
	2400 Load Handling System .....	453-1	453
	2401 Main Hydraulic Pump .....	454-1	454
	2401 Pump Drive Shaft .....	455-1	455
	2401 Air to Oil Cooler .....	456-1	456
	2402 Fan Control Valve .....	457-1	457
	2402 Multi Function Manifold .....	458-1	458
	2402 Multi Function Manifold Fittings .....	459-1	459
	2402 Multi Function Mounting .....	460-1	460
	2402 Hydraulic Return Manifold .....	461-1	461
	2405 LHS Hook Arm Cylinder .....	462-1	462
	2405 LHS Hook Arm Manifold .....	463-1	463
	2406 LHS Main Manifold, Relief Valves and Load Control Valves .....	464-1	464

## TABLE OF CONTENTS (Continued)

		Page	Illus/ Figure
Group 24	Hydraulic and Fluid Systems (Cont)		
	2406 LHS Main Manifold Fittings and Adapters .....	465-1	465
	2406 LHS Main Manifold and Junction Box Mounting .....	466-1	466
	2406 LHS Main Manifold to Compression Frame Hoses .....	467-1	467
	2406 LHS Compression Frame Bulkhead Connectors .....	468-1	468
	2406 LHS Compression Frame Tubes and Mounting .....	469-1	469
	2406 LHS Middle Frame Hydraulic Lines and Hoses .....	470-1	470
	2406 LHS Middle Frame Bulkhead Connectors .....	471-1	471
	2406 LHS Main Cylinder .....	472-1	472
	2406 LHS Main Cylinder Manifold .....	473-1	473
	2406 LHS Diverter Manifold .....	474-1	474
	2406 LHS Disconnect Adapters .....	475-1	475
	2406 Main Hydraulic Pump Lines and Fittings .....	476-1	476
	2406 Main Hydraulic Lines .....	477-1	477
	2406 Main Hydraulic Line Clamps .....	478-1	478
	2406 High Pressure Hydraulic Filter .....	479-1	479
	2406 Return Line Filter .....	480-1	480
	2408 Hydraulic Reservoir Assembly .....	481-1	481
Group 33	Special Purpose Kits		
	3301 Engine Shipping Container .....	482-1	482
	3301 Transmission Shipping Container .....	483-1	483
	3301 Transfer Case Shipping Container .....	484-1	484
	3303 Engine Arctic Kit Water Pump Assembly .....	485-1	485
	3303 Engine Arctic Kit Water Jacket .....	486-1	486
	3303 Engine Arctic Kit Hoses and Pipes .....	487-1	487
	3303 Engine Arctic Kit Battery Box Assembly .....	488-1	488
	3303 Engine Arctic Kit Battery Box Cables .....	489-1	489
	3303 Engine Arctic Kit Wiring Harnesses .....	490-1	490
	3307 EMM Power Interface Kit .....	491-1	491
	3307 EMM Power Interface Kit Cab Access Panel .....	492-1	492
	3307 EMM Power Interface Kit Power Interface Enclosure, Lines and Fittings .....	493-1	493
	3307 EMM Power Interface Kit Hydraulic Valve Hoses and Fittings .....	494-1	494
	3307 EMM Power Interface Kit Quick Disconnect Tube Assemblies and Fittings .....	495-1	495
	3307 EMM Power Interface Kit Tubes and Fittings .....	496-1	496
	3307 EMM Power Interface Kit Quick Disconnect Assembly .....	497-1	497
	3307 EMM Power Interface Kit Wire Harness .....	498-1	498
	3307 EMM Power Interface Kit Hydraulic Valve Assembly .....	499-1	499
	3307 EMM Power Interface Kit Power Interface Enclosure .....	500-1	500
	3307 CHU Kit Control Box .....	501-1	501
	3307 CHU Kit Light Bar .....	502-1	502
	3307 CHU Kit Front Container Support .....	503-1	503
	3307 CHU Kit Strut, Long .....	504-1	504
	3307 CHU Kit Jumper Harness .....	505-1	505
	3307 CHU Kit Sensor Harness .....	506-1	506
	3307 CHU Kit Proximity Switch .....	507-1	507
	3307 CHU Kit Limit Angle Switch .....	508-1	508
	3307 CHU Kit Short Strut and Flip Lock Pin .....	509-1	509
	3307 CHU Kit Slider Assembly .....	510-1	510
	3307 CHU Kit Slider Arm .....	511-1	511
	3307 CHU Kit Pivot Pin .....	512-1	512
	3307 CHU Kit Container Guide .....	513-1	513
	3307 CHU Kit Lifting Frame .....	514-1	514
	3307 CHU Kit Front Lifting Adapter .....	515-1	515
	3307 CHU Kit Rear Container Support .....	516-1	516
	3307 CHU Kit Data Plates .....	517-1	517
	3307 CHU Kit SRW Adapter Kit .....	518-1	518

## TABLE OF CONTENTS (Continued)

		<b>Page</b>	<b>Illus/ Figure</b>
Group 34	Armament and Sighting and Fire Control (Electric/Electronic) Materiel		
	3402 Machine Gun Mounting Kit .....	519-1	519
	3402 Machine Gun Mounting Kit Operators Platform .....	520-1	520
Group 47	Gages (Non-Electrical) Weighing and Measuring Devices		
	4702 Restrictor Indicator and Air Pressure Gage .....	521-1	521
Group 68	Radio Telephone System		
	6809 Radio Mounting Kit .....	522-1	522
Group 91	Chemical, Biological and Radiological (CBR) Equipment		
	9111 Gas Particulate Filter Unit Kit .....	523-1	523
	9111 Gas Particulate Filter Unit Kit Switch .....	524-1	524
	9111 Gas Particulate Filter Unit Kit Wiring Harness .....	525-1	525
	9131 Chemical Alarm Kit .....	526-1	526
	9131 Decontamination Kit Mounting .....	527-1	527
Group 94	Repair Kits		
	9401 Repair Kits .....	KITS-1	
Group 95	General Use Standardized Parts		
	9501 Hardware Supplies and Bulk Material .....	BULK-1	
Section III.	SPECIAL TOOLS LIST		
	2604 Unit Maintenance Special Tools .....	528-1	528
	2604 Direct Support Maintenance Special Tools .....	529-1	529
	2604 General Support Maintenance Special Tools .....	530-1	530
	2604 Diagnostic Reader, Cartridges and Breakout Cable .....	531-1	531
	2604 Unit Maintenance Pressure Testing Set .....	532-1	532
	2604 Direct Support Maintenance Pressure Testing Set .....	533-1	533
Section IV.	CROSS REFERENCE INDEX		
	National Stock Number Index .....	I-1	
	Part Number Index .....	I-77	

# UNIT, DIRECT SUPPORT AND GENERAL SUPPORT MAINTENANCE REPAIR PARTS AND SPECIAL TOOLS LIST

---

## Section I. INTRODUCTION

### 1. SCOPE.

This RPSTL lists and authorizes spares and repair parts; special tools; special Test, Measurement, and Diagnostic Equipment (TMDE); and other special support equipment required for performance of Unit, Direct Support, and General Support Maintenance of the M1074/M1075 Palletized Load System (PLS). It authorizes the requisitioning, issue, and disposition of spares, repair parts and special tools as indicated by the source, maintenance, and recoverability (SMR) codes.

### 2. GENERAL.

In addition to Section I, Introduction, this Repair Parts and Special Tools List (RPSTL) is divided into the following sections:

**c. Section II. Repair Parts List.** A list of spares and repair parts authorized by this RPSTL for use in the performance of maintenance. The list also includes parts which must be removed for replacement of the authorized parts. Parts Lists are composed of functional groups in ascending alphanumeric sequence, with the parts in each group listed in ascending figure and item number sequence. Bulk materials are listed by item name in FIG BULK at the end of the section. Repair parts kits or sets are listed separately in their own functional group within Section II. Repair parts for repairable special tools are also listed in the section.

**c. Section III. Special Tools List.** A list of special tools, special Test, Measurement and Diagnostic Equipment (TMDE), and other special support equipment authorized by this RPSTL (as indicated by Basis of Issue (BOI) information in DESCRIPTION AND USABLE ON CODE (UOC) column) for the performance of maintenance.

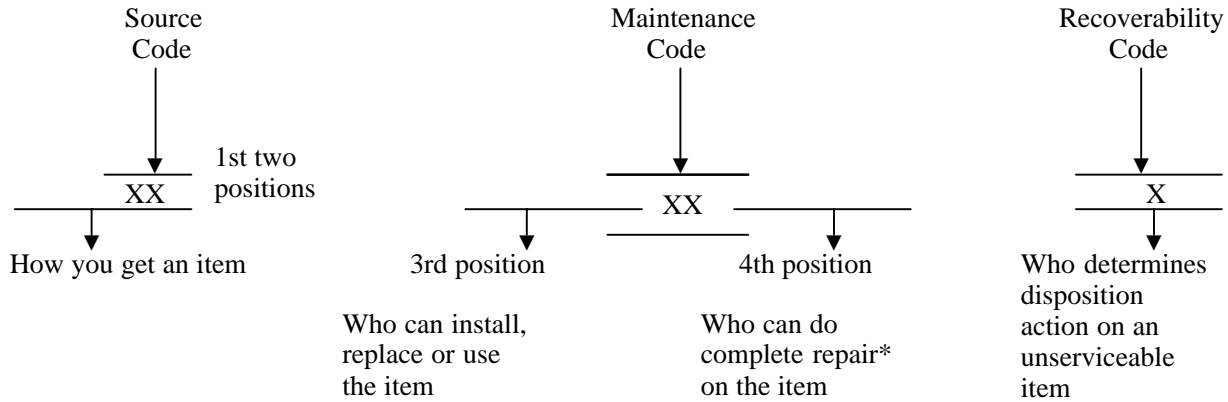
**c. Section IV. Cross-Reference Indexes.** A list, in National Item Identification Number (NIIN) sequence, of all National stock numbered items appearing in the listings, followed by a list in alphanumeric sequence of all part numbers appearing in the listings. National stock numbers and part numbers are cross-referenced to each illustration figure and item number appearance.

### 3. EXPLANATION OF COLUMNS (SECTIONS II AND III).

**a. Item No. (Column (1)).** Indicates the number used to identify items called out in the illustration.

**b. SMR Code (Column (2)).** The Source, Maintenance, and Recoverability (SMR) code is a 5-position code containing supply/requisitioning information, maintenance category authorization criteria, and disposition instruction, as shown in the following breakout:

**3. EXPLANATION OF COLUMNS (SECTIONS II AND III) (CONT).**



\* Complete Repair: Maintenance capacity, capability, and authority to perform all corrective maintenance tasks for the "Repair" function in a use/user environment in order to restore serviceability to a failed item.

- (1) Source Code. The source code tells you how to get an item needed for maintenance, repair, or overhaul of an end item/equipment. Explanations of source codes follows:

Code	Explanation
<div style="border: 1px solid black; padding: 5px; display: inline-block;">                     PA                      PB                      PC**                      PD                      PE                      PF                      PG                 </div>	Stocked items; use the applicable NSN to request/requisition items with these source codes. They are authorized to the category indicated by the code entered in the 3rd position of the SMR code.  **NOTE: Items coded PC are subject to deterioration.
<div style="border: 1px solid black; padding: 5px; display: inline-block;">                     KD                      KF                      KB                 </div>	Items with these codes are not to be requested/requisitioned individually. They are part of a kit which is authorized to the maintenance category indicated in the 3rd position of the SMR code. The complete kit must be requisitioned and applied.
<div style="border: 1px solid black; padding: 5px; display: inline-block;">                     MO- (Made at org Level)                      MF- (Made at DS Level)                      MH- (Made at GS Level)                      ML- (Made at Specialized Repair Act (SRA))                      MD- (Made at Depot)                 </div>	Items with these codes are not to be requested/requisitioned individually. They must be made from bulk material which is identified by the part number in the DESCRIPTION AND USABLE ON CODE (UOC) column and listed in the Bulk Material group of the repair parts list in this RPSTL. If the item is authorized to you by the 3rd position code of the SMR code, but the source code indicates it is made at a higher level, order the item from the higher level of maintenance.

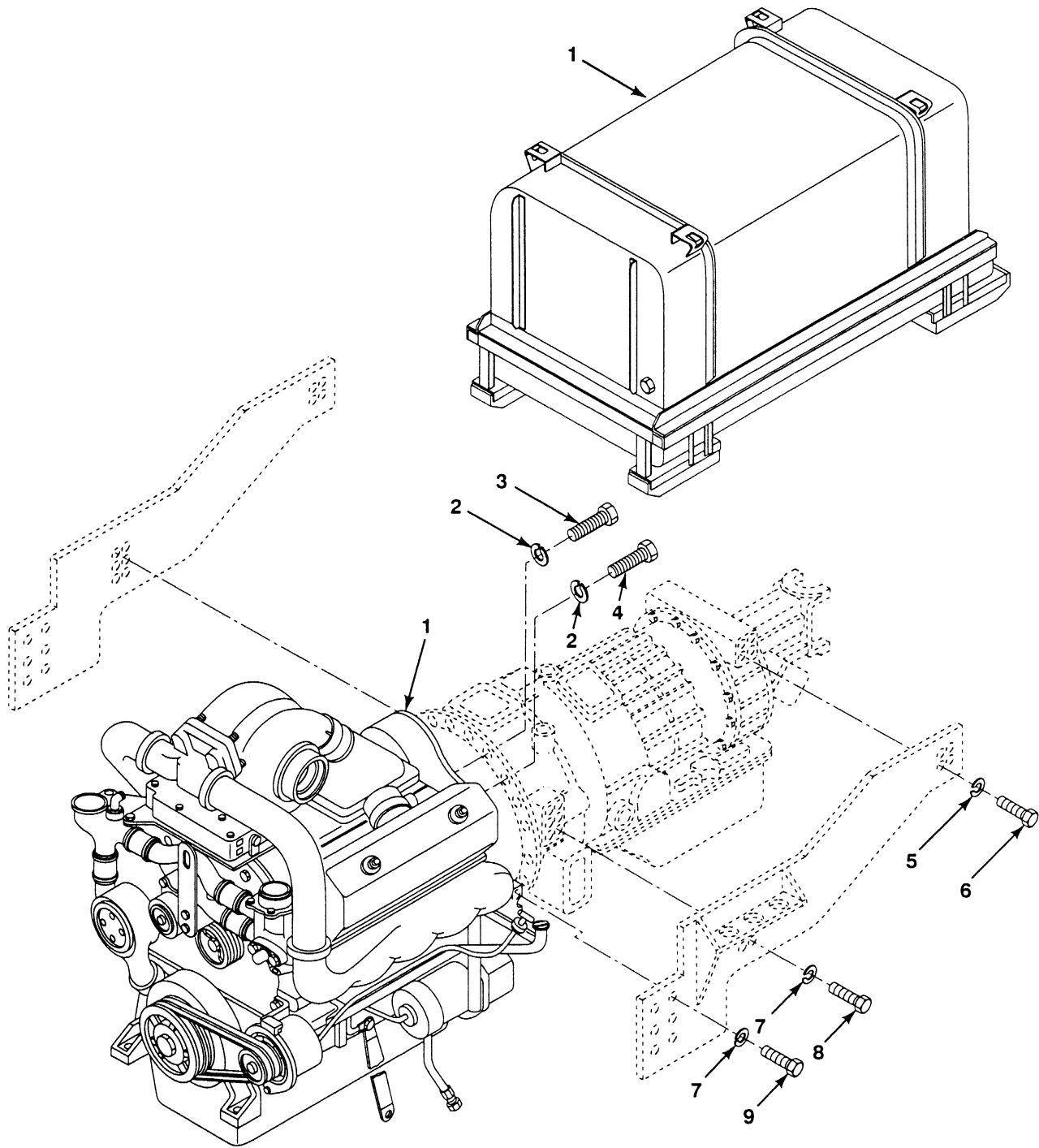


FIG. 1 DRESSED ENGINE ASSEMBLY WITH CONTAINER



## SECTION II

TM9-2320-364-24P

(1) ITEM NO	(2) SMR CODE	(3) NSN	(4) CAGEC	(5) PART NUMBER	(6) DESCRIPTION AND USABLE ON CODES (UOC)	(7) QTY
					GROUP 01 ENGINE	
					GROUP 0100 ENGINE ASSEMBLY	
					FIG. 1 DRESSED ENGINE ASSEMBLY WITH CONTAINER	
1	PGFHH	2815-01-366-3280	19207	57K3143	ENGINE ASSY,DRESSED WITH CONTAINER, DDEC II ONLY	1
1	PAFHD	2815-01-446-5175	19207	12392351	ENGINE ASSY,DRESSED WITH CONTAINER, DDEC III ONLY	1
1	PAFHD	- - -	19207	12472147	ENGINE ASSY W/CONTN WITH STD 200 AMP ALTERNATOR	1
2	PAFZZ	5310-01-081-1283	45152	352AX	WASHER,LOCK 7/16	24
3	PAFZZ	5305-01-347-9802	45152	1514640	SCREW,CAP,HEX HD 7/16-14X1/2	22
4	PFFZZ	5305-01-336-3213	45152	1510530	SCREW,CAP,HEX HD 7/16-14X1 1/4	2
5	PAFZZ	5310-01-061-4481	45152	777-A	WASHER,LOCK 3/4	8
6	PFFZZ	5305-00-938-1539	45152	62049AX	SCREW,CAP,HEX HD 3/4-10X2	8
7	PAFZZ	5310-00-820-6653	96906	MS35338-50	WASHER,LOCK 5/8	16
8	PFFZZ	5305-01-274-1097	45152	55521AX	SCREW,CAP,SKT HD 5/8-11X2 3/4	4
9	PAFZZ	5305-00-224-1176	72582	223435	SCREW,CAP,HEX HD 5/8-11X1 3/4	12

END OF FIGURE