

# **TM 9-2320-364-24P-2**

This manual in conjunction with TM 9-2320-364-24P-1 supersedes  
TM 9-2320-364-24P, dated 28 July 1995, including all changes.

---

## **TECHNICAL MANUAL**

### **UNIT, DIRECT SUPPORT AND GENERAL SUPPORT MAINTENANCE REPAIR PARTS AND SPECIAL TOOLS LIST**

**FOR**

### **PALLETIZED LOAD SYSTEM (PLS) M1074/M1075**

**NSN 2320-01-304-2277, EIC: B4G  
NSN 2320-01-304-2278, EIC: B4H**

---

#### **DISTRIBUTION STATEMENT:**

**Approved for public release; distribution is unlimited.**

---

---

**HEADQUARTERS, DEPARTMENT OF THE ARMY**

**AUGUST 1999**

TECHNICAL MANUAL

No. 9-2320-364-24P-2

HEADQUARTERS  
DEPARTMENT OF THE ARMY  
Washington, D.C. 1 August 1999

**UNIT, DIRECT SUPPORT AND  
GENERAL SUPPORT MAINTENANCE  
REPAIR PARTS AND SPECIAL TOOLS LIST  
FOR  
PALLETIZED LOAD SYSTEM  
(PLS) M1074/M1075**

**NSN 2320-01-304-2277, EIC: B4G  
NSN 2320-01-304-2278, EIC: B4H**

Current as of 15 December 1998

**REPORTING ERRORS AND RECOMMENDING IMPROVEMENTS**

You can help improve this publication. If you find any mistakes or if you know of a way to improve the procedures, please let us know. Submit your DA Form 2028 (Recommended Changes to Publications and Blank Forms), through the Internet, on the Army Electronic Product Support (AEPS) website. The Internet address is <http://aeps.ria.army.mil>. If you need a password, scroll down and click on "ACCESS REQUEST FORM." The DA Form 2028 is located in the ONLINE FORMS PROCESSING section of the AEPS. Fill out the form and click on SUBMIT. Using this form on the AEPS will enable us to respond quicker to your comments and better manage the DA Form 2028 program. You may also mail, fax or email your letter, DA Form 2028, or DA Form 2028-2, located at the back of this manual direct to: Commander, U.S. Army Tank-automotive and Armaments Command, ATTN: AMSTA-AC-NML, Rock Island, IL 61299-7630. The email address is [amsta-ac-nml@ria.army.mil](mailto:amsta-ac-nml@ria.army.mil). The fax number is DSN 793-0726 or Commercial (309) 782-0726. A reply will be furnished to you.

This manual is published in two volumes.

**TABLE OF CONTENTS**

	Page	Illus/ Figure
Group 20 Hoist, Winch, Capstan, Windlass, Power Control Unit and Power Take-Off		
2001 Basic Crane, Cable and Mounting .....	362-1	362
2001 Crane Boom Assembly Base Section .....	363-1	363
2001 Crane Boom Assembly Inner Mid Section .....	364-1	364
2001 Crane Boom Assembly Outer Mid Section .....	365-1	365
2001 Crane Boom Assembly Fly Section .....	366-1	366

**Approved for public release; distribution is unlimited.**

\*This manual in conjunction with TM 9-2320-364-24P-1 supersedes TM 9-2320-364-24P, dated 28 July 1995, including all changes.

## TABLE OF CONTENTS (Continued)

		Page	Illus/ Figure
Group 20	Hoist, Winch, Capstan, Windlass, Power Control Unit and Power Take-Off (Cont)		
	2001 Crane Boom Assembly Structural Section	367-1	367
	2001 Crane Boom Assembly Chain Section	368-1	368
	2001 Mast Erection Cylinder	369-1	369
	2001 Lift Cylinder Assembly	370-1	370
	2001 Telescope Cylinder Assembly	371-1	371
	2001 Mast Assembly	372-1	372
	2001 Tension Link Assembly	373-1	373
	2001 Hoist Assembly	374-1	374
	2001 Hoist Assembly and Tension Load Cell Mounting	375-1	375
	2001 Hydraulic Hoist Motor	376-1	376
	2001 Hoist Motor Valve Assembly	377-1	377
	2001 Hoist Carrier Assembly (Primary)	378-1	378
	2001 Hoist Carrier Assembly (Secondary)	379-1	379
	2001 Hoist Brake Assembly	380-1	380
	2001 Hoist Cable Follower and Guide	381-1	381
	2001 Turntable and Bearing	382-1	382
	2001 Crane Mounting Hydraulic Lines and Fittings	383-1	383
	2001 Crane Hydraulic Component Mounting, Accumulator and Solenoid Control Valves	384-1	384
	2001 Crane Hydraulic Pipes, Tubes, Hoses and Fittings	385-1	385
	2001 Swing Drive Hydraulic Pipes, Tubes, Hoses and Fittings	386-1	386
	2001 Lift Cylinder Hydraulic Pipes, Tubes, Hoses and Fittings	387-1	387
	2001 Erection Cylinder Hydraulic Pipes, Tubes, Hoses and Fittings	388-1	388
	2001 Hoist Hydraulic Pipes, Tubes, Hoses and Fittings	389-1	389
	2001 Telescoping Cylinder Hydraulic Pipes, Tubes, Hoses and Fittings	390-1	390
	2001 Outrigger Hydraulic Pipes, Tubes, Hoses and Fittings	391-1	391
	2001 Plumbing and Tube Support	392-1	392
	2001 Swing Drive Assembly, Orbit Motor and Relief Valve Assembly	393-1	393
	2001 Swing Drive Gear Reducer and Brake	394-1	394
	2001 Hand Pump	395-1	395
	2001 Solenoid Valve Assembly	396-1	396
	2001 Two Function Valve Manifold	397-1	397
	2001 Two Function Valve Left Outrigger Control Valve	398-1	398
	2001 Two Function Valve Right Outrigger Control Valve	399-1	399
	2001 Three Function Valve Manifold	400-1	400
	2001 Three Function Valve Outrigger Control Valves	401-1	401
	2001 Three Function Valve Mast Erection Control Valve	402-1	402
	2001 Four Function Valve Body	403-1	403
	2001 Four Function Valve Tele/Swing Manifold	404-1	404
	2001 Four Function Valve Center Manifold	405-1	405
	2001 Four Function Valve Lift/Hoist Manifold	406-1	406
	2001 Four Function Valve Swing Control Assembly	407-1	407
	2001 Four Function Valve Telescoping Control Assembly	408-1	408
	2001 Four Function Valve Lift Control Assembly	409-1	409
	2001 Four Function Valve Hoist Control Assembly	410-1	410
	2001 Hoist Block Assembly	411-1	411
	2001 Remote Control Box	412-1	412
	2001 Remote Control Box Wiring Harness	413-1	413
	2001 Remote Control Box Cable Assembly	414-1	414
	2001 Self Recovery Winch Kit	415-1	415
	2001 Self Recovery Winch Assembly, Winch Motor and Cable	416-1	416
	2001 Self Recovery Winch Counter Balance Valve	417-1	417
	2001 Self Recovery Winch Hydraulic Controls	418-1	418
	2001 Self Recovery Winch Hydraulic Pipes, Tubes and Fittings	419-1	419
	2001 Self Recovery Winch	420-1	420

## TABLE OF CONTENTS (Continued)

		Page	Illus/ Figure
Group 20	Hoist, Winch, Capstan, Windlass, Power Control Unit and Power Take-Off (Cont)		
	2001 Self Recovery Winch Brake .....	421–1	421
	2001 Front Tensioner Assembly .....	422–1	422
	2001 Front Cable Guide .....	423–1	423
	2001 Rear Tensioner Assembly .....	424–1	424
	2001 Rear Cable Guide .....	425–1	425
	2001 Self Recovery Winch Snatch Block .....	426–1	426
	2006 Crane Outrigger Leg Cylinder .....	427–1	427
	2006 Crane Outrigger Leg Mounting .....	428–1	428
	2006 Crane Outrigger Pad Assembly .....	429–1	429
Group 22	Body, Chassis and Hull Accessory Items		
	2202 Cab Door Reflectors .....	430–1	430
	2202 Rear Fender Reflectors .....	431–1	431
	2202 Rear Mud Flap Reflectors .....	432–1	432
	2202 Rear Roller Assembly Reflectors .....	433–1	433
	2202 Mirror Assembly .....	434–1	434
	2202 Wiper Motor .....	435–1	435
	2202 Wiper Arm Assembly .....	436–1	436
	2202 Windshield Washer and Washer Reservoir .....	437–1	437
	2202 Beacon Bracket .....	438–1	438
	2202 Heater, Heater Motor and Core .....	439–1	439
	2202 Heater Control Panel and Cables .....	440–1	440
	2202 Heater Hoses and Fittings .....	441–1	441
	2202 Fresh Air Box and Air Hoses .....	442–1	442
	2210 Cab Data Plates .....	443–1	443
	2210 Side Panel Data Plates .....	444–1	444
	2210 Front Data Plates .....	445–1	445
	2210 Engine Cover and Spare Tire Carrier Data Plates .....	446–1	446
	2210 Gladhand Data Plates .....	447–1	447
	2210 Crane Data Plates and Decals .....	448–1	448
	2210 LHS Data Plates .....	449–1	449
	2210 Chassis and Spare Tire Carrier Data Plates .....	450–1	450
	2210 Self Recovery Winch Data Plate .....	451–1	451
	2210 Circuit Breaker and Relay Data Plates .....	452–1	452
Group 24	Hydraulic and Fluid Systems		
	2400 Load Handling System .....	453–1	453
	2401 Main Hydraulic Pump .....	454–1	454
	2401 Pump Drive Shaft .....	455–1	455
	2401 Air to Oil Cooler .....	456–1	456
	2402 Fan Control Valve .....	457–1	457
	2402 Multi Function Manifold .....	458–1	458
	2402 Multi Function Manifold Fittings .....	459–1	459
	2402 Multi Function Mounting .....	460–1	460
	2402 Hydraulic Return Manifold .....	461–1	461
	2405 LHS Hook Arm Cylinder .....	462–1	462
	2405 LHS Hook Arm Manifold .....	463–1	463
	2406 LHS Main Manifold, Relief Valves and Load Control Valves .....	464–1	464
	2406 LHS Main Manifold Fittings and Adapters .....	465–1	465
	2406 LHS Main Manifold and Junction Box Mounting .....	466–1	466
	2406 LHS Main Manifold to Compression Frame Hoses .....	467–1	467
	2406 LHS Compression Frame Bulkhead Connectors .....	468–1	468
	2406 LHS Compression Frame Tubes and Mounting .....	469–1	469
	2406 LHS Middle Frame Hydraulic Lines and Hoses .....	470–1	470
	2406 LHS Middle Frame Bulkhead Connectors .....	471–1	471
	2406 LHS Main Cylinder .....	472–1	472

## TABLE OF CONTENTS (Continued)

		Page	Illus/ Figure
Group 24	Hydraulic and Fluid Systems (Cont)		
	2406 LHS Main Cylinder Manifold .....	473-1	473
	2406 LHS Diverter Manifold .....	474-1	474
	2406 LHS Disconnect Adapters .....	475-1	475
	2406 Main Hydraulic Pump Lines and Fittings .....	476-1	476
	2406 Main Hydraulic Lines .....	477-1	477
	2406 Main Hydraulic Line Clamps .....	478-1	478
	2406 High Pressure Hydraulic Filter .....	479-1	479
	2406 Return Line Filter .....	480-1	480
	2408 Hydraulic Reservoir Assembly .....	481-1	481
Group 33	Special Purpose Kits		
	3301 Engine Shipping Container .....	482-1	482
	3301 Transmission Shipping Container .....	483-1	483
	3301 Transfer Case Shipping Container .....	484-1	484
	3303 Engine Arctic Kit Water Pump Assembly .....	485-1	485
	3303 Engine Arctic Kit Water Jacket .....	486-1	486
	3303 Engine Arctic Kit Hoses and Pipes .....	487-1	487
	3303 Engine Arctic Kit Battery Box Assembly .....	488-1	488
	3303 Engine Arctic Kit Battery Box Cables .....	489-1	489
	3303 Engine Arctic Kit Wiring Harnesses .....	490-1	490
	3307 EMM Power Interface Kit .....	491-1	491
	3307 EMM Power Interface Kit Cab Access Panel .....	492-1	492
	3307 EMM Power Interface Kit Power Interface Enclosure, Lines and Fittings .....	493-1	493
	3307 EMM Power Interface Kit Hydraulic Valve Hoses and Fittings .....	494-1	494
	3307 EMM Power Interface Kit Quick Disconnect Tube Assemblies and Fittings .....	495-1	495
	3307 EMM Power Interface Kit Tubes and Fittings .....	496-1	496
	3307 EMM Power Interface Kit Quick Disconnect Assembly .....	497-1	497
	3307 EMM Power Interface Kit Wire Harness .....	498-1	498
	3307 EMM Power Interface Kit Hydraulic Valve Assembly .....	499-1	499
	3307 EMM Power Interface Kit Power Interface Enclosure .....	500-1	500
	3307 CHU Kit Control Box .....	501-1	501
	3307 CHU Kit Light Bar .....	502-1	502
	3307 CHU Kit Front Container Support .....	503-1	503
	3307 CHU Kit Strut, Long .....	504-1	504
	3307 CHU Kit Jumper Harness .....	505-1	505
	3307 CHU Kit Sensor Harness .....	506-1	506
	3307 CHU Kit Proximity Switch .....	507-1	507
	3307 CHU Kit Limit Angle Switch .....	508-1	508
	3307 CHU Kit Short Strut and Flip Lock Pin .....	509-1	509
	3307 CHU Kit Slider Assembly .....	510-1	510
	3307 CHU Kit Slider Arm .....	511-1	511
	3307 CHU Kit Pivot Pin .....	512-1	512
	3307 CHU Kit Container Guide .....	513-1	513
	3307 CHU Kit Lifting Frame .....	514-1	514
	3307 CHU Kit Front Lifting Adapter .....	515-1	515
	3307 CHU Kit Rear Container Support .....	516-1	516
	3307 CHU Kit Data Plates .....	517-1	517
	3307 CHU Kit SRW Adapter Kit .....	518-1	518
Group 34	Armament and Sighting and Fire Control (Electric/Electronic) Materiel		
	3402 Machine Gun Mounting Kit .....	519-1	519
	3402 Machine Gun Mounting Kit Operators Platform .....	520-1	520
Group 47	Gages (Non-Electrical) Weighing and Measuring Devices		
	4702 Restrictor Indicator and Air Pressure Gage .....	521-1	521
Group 68	Radio Telephone System		
	6809 Radio Mounting Kit .....	522-1	522

## TABLE OF CONTENTS (Continued)

		<b>Page</b>	<b>Illus/ Figure</b>
Group 91	Chemical, Biological and Radiological (CBR) Equipment		
	9111 Gas Particulate Filter Unit Kit .....	523-1	523
	9111 Gas Particulate Filter Unit Kit Switch .....	524-1	524
	9111 Gas Particulate Filter Unit Kit Wiring Harness .....	525-1	525
	9131 Chemical Alarm Kit .....	526-1	526
	9131 Decontamination Kit Mounting .....	527-1	527
Group 94	Repair Kits		
	9401 Repair Kits .....	KITS-1	
Group 95	General Use Standardized Parts		
	9501 Hardware Supplies and Bulk Material .....	BULK-1	
Section III.	SPECIAL TOOLS LIST		
	2604 Unit Maintenance Special Tools .....	528-1	528
	2604 Direct Support Maintenance Special Tools .....	529-1	529
	2604 General Support Maintenance Special Tools .....	530-1	530
	2604 Diagnostic Reader, Cartridges and Breakout Cable .....	531-1	531
	2604 Unit Maintenance Pressure Testing Set .....	532-1	532
	2604 Direct Support Maintenance Pressure Testing Set .....	533-1	533
Section IV.	CROSS REFERENCE INDEX		
	National Stock Number Index .....	I-1	
	Part Number Index .....	I-77	

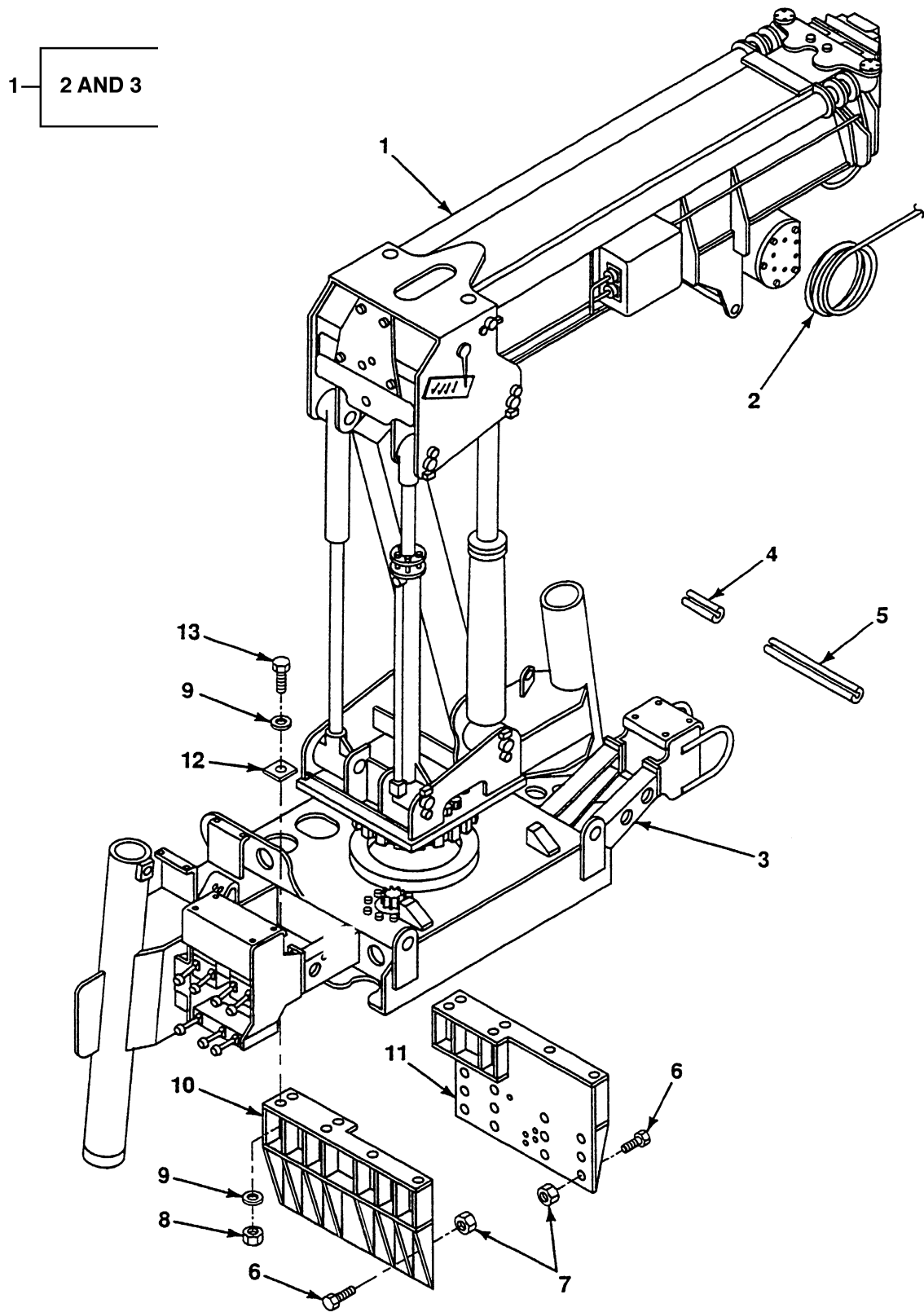


FIG. 362 BASIC CRANE, CABLE AND MOUNTING

## SECTION II

TM9-2320-364-24P

(1) ITEM NO	(2) SMR CODE	(3) NSN	(4) CAGEC	(5) PART NUMBER	(6) DESCRIPTION AND USABLE ON CODES (UOC)	(7) QTY
					GROUP 20 HOIST, WINCH, CAPSTAN, WINDLASS, POWER CONTROL UNIT AND POWER TAKE-OFF	
					GROUP 2001 HOIST, CAPSTAN, WINDLASS, CRANE OR WINCH ASSEMBLY	
					FIG. 362 BASIC CRANE, CABLE AND MOUNTING	
1	PBFFF	3810-01-359-2890	12361	2-195-1-00022	OSHKOSH CRANE UOC: 074,	1
2	PAOZZ	4010-01-352-9900	12361	6-246-002585	.CABLE - HOIST UOC: 074,	1
3	XDFFF	- - -	12361	2-195-1-00023	.SUB FRAME ASSY UOC: 074,	1
4	M0OZZ	- - -	12361	6-637-055-010	LOOM,QUICKEDGE MAKE FROM LOOM P/N 75000349 (82654), 10 IN LG UOC: 074,	1
5	M0OZZ	- - -	12361	6-637-055-002	LOOM,QUICKEDGE MAKE FROM LOOM P/N 75000349 (82654), 2 IN LG UOC: 074,	1
6	PAFZZ	5306-01-236-1585	45152	1336700	SCREW,CAP,HEX HD 3/4-10X1 3/4 UOC: 074,	16
7	PAFZZ	5310-01-150-5918	45152	110312A	NUT,SLFLKG,EW,HEX 3/4-10 UOC: 074,	16
8	PFOZZ	5310-01-080-9201	82458	TLA-10008-GRC	NUT,SLFLKG,HEX 1-8 UOC: 074,	12
9	PAOZZ	5310-01-352-2754	45152	28261AX	WASHER,FLAT 1 UOC: 074,	24
10	PBFZZ	5340-01-352-7682	45152	1755180 W	BRACKET,CRANE MTG L UOC: 074,	1
11	PBFZZ	5340-01-352-7620	45152	1755170 W	BRACKET,CRANE MTG R UOC: 074,	1
12	PAOZZ	5365-01-203-8424	12361	6-705-010376	PLATE UOC: 074,	12
13	PAOZZ	5305-01-352-8138	45152	121681A	SCREW,CAP,HEX HD 1-8X6 1/2 UOC: 074,	12

END OF FIGURE



7  
6— THROUGH  
11

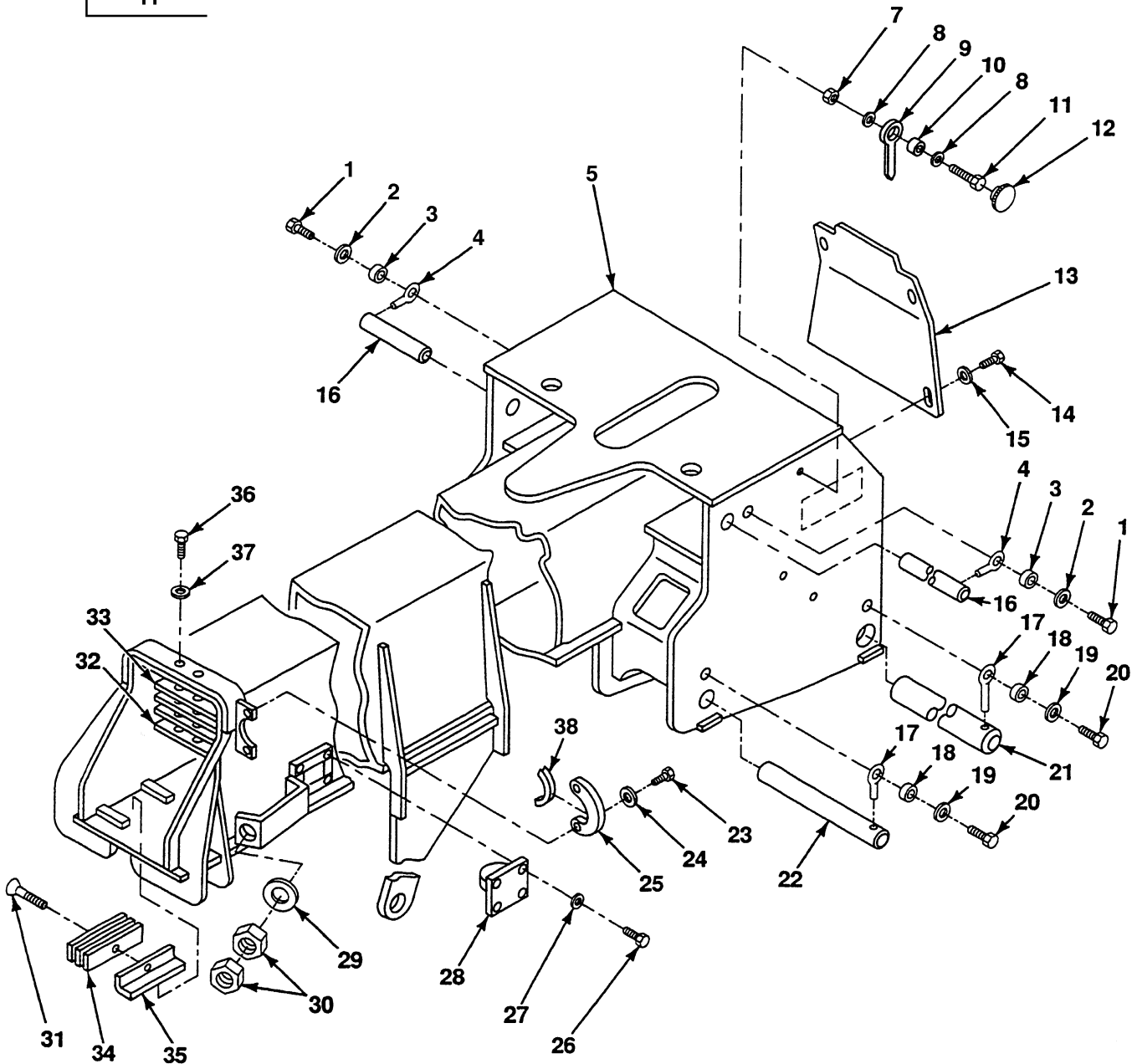


FIG. 363 CRANE BOOM ASSEMBLY BASE SECTION

## SECTION II

TM9-2320-364-24P

(1) ITEM NO	(2) SMR CODE	(3) NSN	(4) CAGEC	(5) PART NUMBER	(6) DESCRIPTION AND USABLE ON CODES (UOC)	(7) QTY
					GROUP 2001 HOIST, CAPSTAN, WINDLASS, CRANE OR WINCH ASSEMBLY FIG. 363 CRANE BOOM ASSEMBLY BASE SECTION	
1	PAFZZ	5305-01-010-2362	96906	MS18154-59	SCREW,CAP,HEXAGON H 3/8-16X7/8 UOC: 074,	2
2	PAOZZ	5310-01-173-1109	12361	7-949-000263	WASHER,FLAT 3/8 UOC: 074,	4
3	PAFZZ	3120-01-354-0105	12361	6-200-050303	BUSHING UOC: 074,	2
4	PAFZZ	5315-01-171-8170	75535	S-293	PIN,STRAIGHT,HEADED UOC: 074,	2
5	PBFZZ	2510-01-354-9106	12361	2-195-9-00001	BASE SECTION WELD UOC: 074,	1
6	PBFFF	5355-01-372-8695	12361	2-195-9-00586	POINTER ASSY UOC: 074,	2
7	PAFZZ	5310-00-891-1709	96906	MS35691-9	.NUT,PLAIN,HEX 5/16-18 UOC: 074,	1
8	PAFZZ	5310-00-081-4219	96906	MS27183-12	.WASHER,FLAT 5/16 UOC: 074,	2
9	PFFZZ	5355-01-355-3482	12361	4-195-9-00219	.POINTER UOC: 074,	1
10	PFFZZ	3110-00-492-0937	38443	38ZZ	.BEARING,BALL,ANNLR UOC: 074,	1
11	PAFZZ	5305-01-395-5109	12361	7-115-150850	.BOLT,MACHINE 5/16-18X1 UOC: 074,	1
12	PFFZZ	5340-01-255-5160	28520	2713-DP1000	BUTTON,PLUG UOC: 074,	2
13	PF0ZZ	5340-01-353-1977	12361	4-195-9-00805	COVER,BASE UOC: 074,	1
14	PAOZZ	5305-00-721-5492	80204	B1821BH038C063N	SCREW,CAP,HEXAGON H 3/8-16X5/8 UOC: 074,	4
15	PAOZZ	5310-00-080-6004	96906	MS27183-14	WASHER,FLAT 13/32 UOC: 074,	4
16	PBFZZ	5315-01-352-3510	12361	6-689-000963	PIN UOC: 074,	2
17	PAFZZ	5306-01-206-3141	75535	S-293-1-2X3-1-4	BOLT,EYE UOC: 074,	4
18	PAFZZ	3120-01-204-2202	12361	6-199-001672	BUSHING,SLEEVE UOC: 074,	4
19	PAFZZ	5310-01-169-9624	12361	7-949-000236	WASHER,FLAT 3/4 UOC: 074,	4
20	PAFZZ	5305-00-947-4352	80204	B1821BH075C125N	SCREW,CAP,HEXAGON H 3/4 X 1 1/4 UOC: 074,	4
21	PBFZZ	3040-01-355-0527	12361	6-810-002186	PIVOT SHAFT UOC: 074,	1
22	PBFZZ	3040-01-361-5138	12361	6-810-002152	PIVOT SHAFT	2

## SECTION II

TM9-2320-364-24P

(1) ITEM NO	(2) SMR CODE	(3) NSN	(4) CAGEC	(5) PART NUMBER	(6) DESCRIPTION AND USABLE ON CODES (UOC)	(7) QTY
23	PAFZZ	5305-00-732-0512	80204	B1821BH050C075N	UOC: 074, SCREW,CAP,HEXAGON H 1/2-13X3/4	4
24	PAFZZ	5310-00-939-1198	72582	5117082	UOC: 074, WASHER,FLAT 1/2	4
25	PBFZZ	5340-01-353-2618	12361	4-195-9-00122	UOC: 074, CYL HOLD DOWN	2
26	PAFZZ	5306-00-226-4825	80204	B1821BH031C075N	UOC: 074, BOLT,MACHINE 5/16-18X3/4	4
27	PAFZZ	5310-01-259-6358	12361	7-949-000534	UOC: 074, WASHER,FLAT 5/16	4
28	PFFZZ	5340-01-354-4219	12361	2-195-9-00028	UOC: 074, CABLE RETAINER,WELD	1
29	PAFZZ	5310-01-195-7956	12361	7-949-000237	UOC: 074, WASHER,FLAT	1
30	PAFZZ	5310-00-880-8187	96906	MS51967-27	UOC: 074, NUT,PLAIN,HEX 7/8-9	2
31	PAOZZ	5305-01-354-2843	12361	7-119-100307	UOC: 074, SCREW,MACHINE NO. 10X3/8	2
32	PAOZZ	5310-01-354-6610	12361	6-086-001196	UOC: 074, BLOCK,SPACER	1
33	PAOZZ	5365-01-204-5493	12361	6-705-010742	UOC: 074, SPACER,PLATE	1
34	PAOZZ	5365-01-354-0251	12361	4-195-9-00297	UOC: 074, SHIM 0.06 INCHES	1
34	PAOZZ	5365-01-354-0252	12361	4-195-9-00298	UOC: 074, SHIM 0.12 INCHES	1
34	PAOZZ	5365-01-354-0253	12361	4-195-9-00299	UOC: 074, SHIM 0.19 INCHES	1
35	PAOZZ	2590-01-352-2339	12361	6-671-000362	UOC: 074, WEAR PAD,BODY	2
36	PAOZZ	5305-00-543-4372	80204	B1821BH038C075N	UOC: 074, SCREW,CAP,HEXAGON H 3/8-16X3/4 LG, DEPENDS ON SHIMS USED	2
36	PAOZZ	5305-00-721-5492	80204	B1821BH038C063N	UOC: 074, SCREW,CAP,HEXAGON H 3/8-16X5/8, DEPENDS ON SHIMS USED	2
37	PFFZZ	9330-01-181-3756	12361	9637100001	UOC: 074, MOLDING,PLASTIC	2

END OF FIGURE