

TM 9-2330-385-24P

This manual supersedes TM 9-2330-385-24P, dated 17 February 1997, including all changes.

TECHNICAL MANUAL

**UNIT, DIRECT SUPPORT AND
GENERAL SUPPORT MAINTENANCE
REPAIR PARTS AND SPECIAL TOOLS LIST**

FOR

**TRAILER, PALLETIZED
LOAD SYSTEM
(PLST) M1076**

NSN 2330-01-303-5197

DISTRIBUTION STATEMENT:

Approved for public release; distribution is unlimited.

HEADQUARTERS, DEPARTMENT OF THE ARMY

AUGUST 1999

TECHNICAL MANUAL

No. 9-2330-385-24P

HEADQUARTERS
DEPARTMENT OF THE ARMY
Washington, D.C. 1 August 1999

UNIT, DIRECT SUPPORT AND GENERAL SUPPORT MAINTENANCE REPAIR PARTS AND SPECIAL TOOLS LIST FOR

TRAILER, PALLETIZED LOAD SYSTEM (PLST) M1076

NSN 2330-01-303-5197

Current as of 15 December 1998

REPORTING ERRORS AND RECOMMENDING IMPROVEMENTS

You can help improve this publication. If you find any mistakes or if you know of a way to improve the procedures, please let us know. Submit your DA Form 2028 (Recommended Changes to Publications and Blank Forms), through the Internet, on the Army Electronic Product Support (AEPS) website. The Internet address is <http://aeps.ria.army.mil>. If you need a password, scroll down and click on "ACCESS REQUEST FORM." The DA Form 2028 is located in the ONLINE FORMS PROCESSING section of the AEPS. Fill out the form and click on SUBMIT. Using this form on the AEPS will enable us to respond quicker to your comments and better manage the DA Form 2028 program. You may also mail, fax or email your letter, DA Form 2028, or DA Form 2028-2, located at the back of this manual direct to: Commander, U.S. Army Tank-automotive and Armaments Command, ATTN: AMSTA-AC-NML, Rock Island, IL 61299-7630. The email address is amsta-ac-nml@ria.army.mil. The fax number is DSN 793-0726 or Commercial (309) 782-0726. A reply will be furnished to you.

TABLE OF CONTENTS

	Page	Illus/ Figure
Section I. INTRODUCTION	1	
Section II. REPAIR PARTS LIST	1-1	
Group 06 Electrical System		
0608 Front Electrical Box Assembly	1-1	1
0608 Rear Electrical Box Assembly	2-1	2
0608 Flatrack Lock Sensor	3-1	3
0609 Front Side Marker Lights	4-1	4
0609 Rear Side Marker Lights	5-1	5
0609 Amber Clearance Light	6-1	6

Approved for public release; distribution is unlimited.

*This manual supersedes TM 9-2330-385-24P, dated 17 February 1997, including all changes.

TABLE OF CONTENTS (Continued)

		Page	Illus/ Figure
Group 06	Electrical System (Cont)		
	0609 Rear Clearance Light	7-1	7
	0609 Identification Lights	8-1	8
	0609 Composite Tail Light	9-1	9
	0613 Main Wiring Harness	10-1	10
	0613 Composite Tail Light Harness	11-1	11
	0613 Flatrack Lock Intervehicular Cable	12-1	12
	0613 Intervehicular Connectors	13-1	13
Group 10	Front Axle		
	1000 Front Axle Assembly	14-1	14
Group 11	Rear Axle		
	1100 Rear Axle Assembly	15-1	15
Group 12	Brakes		
	1202 Brake Shoe Assembly, Camshaft and Slack Adjuster	16-1	16
	1208 Front Axle Brake Chambers, Lines and Fittings	17-1	17
	1208 Rear Axle Brake Chambers, Lines and Fittings	18-1	18
	1208 Brake Relay Valve	19-1	19
	1208 Glad Hand Installation	20-1	20
	1208 Front Air Tank, Lines and Fittings	21-1	21
	1208 Rear Air Tank, Lines and Fittings	22-1	22
	1208 Quick Release Valve	23-1	23
	1208 Brake Power Regulator Valve	24-1	24
	1208 Multifunction Valve	25-1	25
	1208 Drawbar Air Controls, Lines and Fittings	26-1	26
Group 13	Wheels and Tracks		
	1311 Wheel and Hub	27-1	27
	1313 Tire	28-1	28
Group 14	Steering		
	1405 Turntable Assembly and Bearing	29-1	29
Group 15	Frame, Towing Attachments, Drawbars and Articulation Systems		
	1501 Rear Suspension Hanger	30-1	30
	1503 Drawbar Assembly	31-1	31
	1503 Drawbar Safety Chain	32-1	32
	1504 Spare Tire Mount, Winch and Pulley	33-1	33
Group 16	Springs and Shock Absorbers		
	1601 Front Spring and Saddle Assembly	34-1	34
	1601 Rear Spring and Saddle Assembly	35-1	35
	1604 Shock Absorbers	36-1	36
Group 18	Body, Cab, Hood and Hull		
	1801 Mud Flaps	37-1	37
	1801 Flatrack Locks	38-1	38
	1801 Flatrack Lock Air Chambers, Lines and Fittings	39-1	39
	1808 Stowage Box	40-1	40
Group 21	Bumpers, Guards and Marine Fenders		
	2101 Bumper, Junction Box Cover and Flatrack Locking Pins	41-1	41
Group 22	Body, Chassis, Hull and Accessory Items		
	2202 Reflectors	42-1	42
	2210 Data Plates	43-1	43
Group 33	Special Purpose Kits		
	3307 Trailer Extended Drawbar/Light Bar Kit	44-1	44
Group 94	Repair Kits		
	9401 Repair Kits	KITS-1	
Group 95	General Use Standardized Parts		
	9501 Bulk Material	BULK-1	

TABLE OF CONTENTS (Continued)

	Page	Illus/ Figure
Section III. SPECIAL TOOLS LIST	45-1	
Group 26 Tools and test Equipment		
2604 Unit Maintenance Special Tools	45-1	45
2604 Support Maintenance Special Tools	46-1	46
Section IV. CROSS REFERENCE INDEX	I-1	
National Stock Number Index	I-1	
Part Number Index	I-7	

UNIT, DIRECT SUPPORT AND GENERAL SUPPORT MAINTENANCE REPAIR PARTS AND SPECIAL TOOLS LIST

Section I. INTRODUCTION

1. SCOPE.

This RPSTL lists and authorizes spares and repair parts; special tools; special Test, Measurement, and Diagnostic Equipment (TMDE); and other special support equipment required for performance of Unit, Direct Support, and General Support Maintenance of the M1076 Trailer, Palletized Load System (PLST). It authorizes the requisitioning, issue, and disposition of spares, repair parts and special tools as indicated by the source, maintenance, and recoverability (SMR) codes.

2. GENERAL.

In addition to Section I, Introduction, this Repair Parts and Special Tools List (RPSTL) is divided into the following sections:

a. Section II. Repair Parts List. A list of spares and repair parts authorized by this RPSTL for use in the performance of maintenance. The list also includes parts which must be removed for replacement of the authorized parts. Parts Lists are composed of functional groups in ascending alphanumeric sequence, with the parts in each group listed in ascending figure and item number sequence. Bulk materials are listed by item name in FIG BULK at the end of the section. Repair parts kits or sets are listed separately in their own functional group within Section II. Repair parts for repairable special tools are also listed in the section.

b. Section III. Special Tools List. A list of special tools, special Test, Measurement and Diagnostic Equipment (TMDE), and other special support equipment authorized by this RPSTL (as indicated by Basis of Issue (BOI) information in DESCRIPTION AND USABLE ON CODE (UOC) column) for the performance of maintenance.

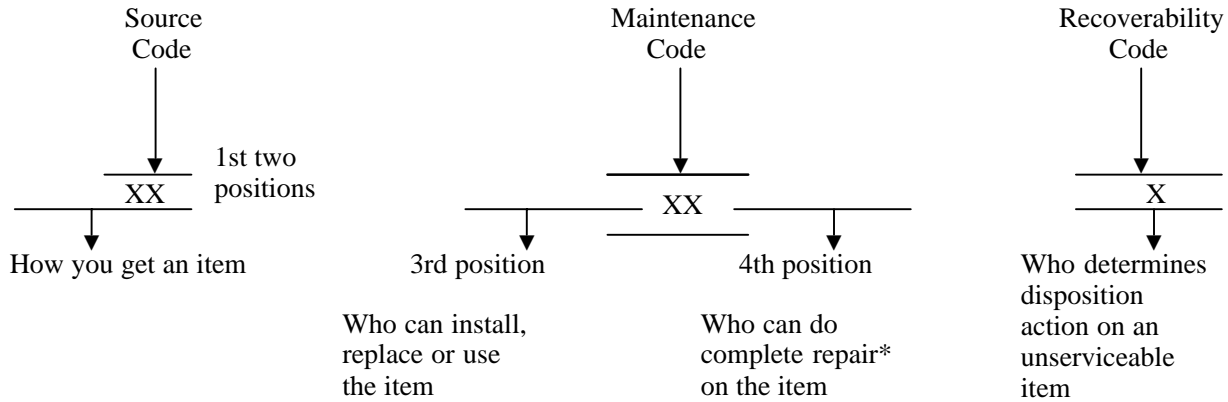
c. Section IV. Cross-Reference Indexes. A list, in National Item Identification Number (NIIN) sequence, of all National stock numbered items appearing in the listings, followed by a list in alphanumeric sequence of all part numbers appearing in the listings. National stock numbers and part numbers are cross-referenced to each illustration figure and item number appearance.

3. EXPLANATION OF COLUMNS (SECTIONS II AND III).

a. Item No. (Column (1)). Indicates the number used to identify items called out in the illustration.

b. SMR Code (Column (2)). The Source, Maintenance, and Recoverability (SMR) code is a 5-position code containing supply/requisitioning information, maintenance category authorization criteria, and disposition instruction, as shown in the following breakout:

3. EXPLANATION OF COLUMNS (SECTIONS II AND III) (CONT).



* Complete Repair: Maintenance capacity, capability, and authority to perform all corrective maintenance tasks for the "Repair" function in a use/user environment in order to restore serviceability to a failed item.

- (1) Source Code. The source code tells you how to get an item needed for maintenance, repair, or overhaul of an end item/equipment. Explanations of source codes follows:

Code	Explanation
<div style="border: 1px solid black; padding: 2px; display: inline-block;"> PA PB PC** PD PE PF PG </div>	Stocked items; use the applicable NSN to request/requisition items with these source codes. They are authorized to the category indicated by the code entered in the 3rd position of the SMR code. **NOTE: Items coded PC are subject to deterioration.
<div style="border: 1px solid black; padding: 2px; display: inline-block;"> KD KF KB </div>	Items with these codes are not to be requested/requisitioned individually. They are part of a kit which is authorized to the maintenance category indicated in the 3rd position of the SMR code. The complete kit must be requisitioned and applied.
<div style="border: 1px solid black; padding: 2px; display: inline-block;"> MO- (Made at org Level) MF- (Made at DS Level) MH- (Made at GS Level) ML- (Made at Specialized Repair Act (SRA)) MD- (Made at Depot) </div>	Items with these codes are not to be requested/requisitioned individually. They must be made from bulk material which is identified by the part number in the DESCRIPTION AND USABLE ON CODE (UOC) column and listed in the Bulk Material group of the repair parts list in this RPSTL. If the item is authorized to you by the 3rd position code of the SMR code, but the source code indicates it is made at a higher level, order the item from the higher level of maintenance.

Code

Explanation

AO- (Assembled by org Level) AF- (Assembled by DS Level) AH- (Assembled by GS Level) AL- (Assembled by SRA) AD- (Assembled by Depot)	>	Items with these codes are not to be requested/requisitioned individually. The parts that make up the assembled item must be requisitioned or fabricated and assembled at the level of maintenance indicated by the source code. If the 3rd position code of the SMR code authorizes you to replace the item, but the source code indicated the item is assembled at a higher level, order the item from the higher level of maintenance.
--	---	---

- XA- Do not requisition an "XA"-coded item. Order its next higher assembly. (Also, refer to the NOTE below.)
- XB- If an "XB" item is not available from salvage, order it using the CAGEC and part number given.
- XC- Installation drawing, diagram, instruction sheet, field service drawing, that is identified by manufacturer's part number.
- XD- Item is not stocked. Order an "XD"-coded item through normal supply channels using the CAGEC and part number given, if no NSN is available.

NOTE

Cannibalization or controlled exchange, when authorized, may be used as a source of supply for items with the above source codes, except for those source coded "XA".

- (2) Maintenance Code. Maintenance codes tell you the level(s) of maintenance authorized to USE and REPAIR support items. The maintenance codes are entered in the third and fourth positions of the SMR Code as follows:
 - (a) The maintenance code entered in the third position tells you the lowest maintenance level authorized to remove, replace, and use an item. The maintenance code entered in the third position will indicate authorization to one of the following levels of maintenance.

Code

Application/Explanation

- C - Crew or operator maintenance done within organizational maintenance.
- O - Unit Maintenance can remove, replace, and use the item.
- F - Direct support level can remove, replace, and use the item.
- H - General support level can remove, replace, and use the item.
- L - Specialized repair activity can remove, replace, and use the item.
- D - Depot level can remove, replace, and use the item.

3. EXPLANATION OF COLUMNS (SECTIONS II AND III) (CONT).

- (b) The maintenance code entered in the fourth position indicates whether the item is to be repaired and identifies the lowest maintenance level with the capability to perform complete repair (i.e., all authorized maintenance functions). (NOTE: Some limited repair may be done on the item at a lower level of maintenance, if authorized by the Maintenance Allocation Chart (MAC) and SMR codes.) This position will contain one of the following maintenance codes:

Code	Application/Explanation
O	- Unit Maintenance is the lowest level that can do complete repair of the item.
F	- Direct support is the lowest level that can do complete repair of the item.
H	- General support is the lowest level that can do complete repair of the item.
L	- Specialized repair activity is the lowest level that can do complete repair of the item.
D	- Depot is the lowest level that can do complete repair of the item.
Z	- Nonreparable. No repair is authorized.
B	- No repair is authorized. (No parts or special tools are authorized for the maintenance of "B"-coded item.) However, the item may be reconditioned by adjusting, lubrication, etc., at the user level.

- (3) Recoverability Code. Recoverability codes are assigned to items to indicate the disposition action on unserviceable items. The recoverability code is entered in the fifth position of the SMR Code as follows:

Code	Application/Explanation
Z	- Nonreparable item. When unserviceable, condemn and dispose of the item at the level of maintenance shown in the 3rd position of SMR Code.
O	- Repairable item. When uneconomically repairable, condemn and dispose of the item at organizational level.
F	- Repairable item. When uneconomically repairable, condemn and dispose of the item at the direct support level.
H	- Repairable item. When uneconomically repairable, condemn and dispose of the item at the general support level.
D	- Repairable item. When beyond lower level repair capability, return to depot. Condemnation and disposal of item not authorized below depot level.
L	- Repairable item. Condemnation and disposal not authorized below specialized repair activity (SRA).
A	- Item requires special handling or condemnation procedures because of specific reasons (e.g., precious metal content, high dollar value, critical material or hazardous material). Refer to appropriate manuals/directives for specific instructions.

- c. **NSN (Column (3)).** The National Stock Number for the item is listed in this column.
- d. **CAGEC (Column (4)).** The Commercial and Government Entity Code (CAGEC) is a 5-digit numeric code which is used to identify the manufacturer, distributor, or Government agency, etc., that supplied the item.
- e. **Part Number (Column (5)).** Indicates the primary number used by the manufacturer (individual, company, firm, corporation, or government activity), which controls the design and characteristics of the item by means of its engineering drawings, specifications standards, and inspection requirements to identify an item or range of items.

NOTE

When you use a NSN to requisition an item, the item you receive may have a different part number from the part ordered.

- f. **Description and Usable On Code (UOC) (Column (6)).** This column includes the following information:
 - (1) The Federal item name and, when required, a minimum description to identify the item.
 - (2) Part numbers for bulk materials are referenced in this column in the line item entry for the item to be manufactured/fabricated.
 - (3) In the Special Tools List section, the basis of issue (BOI) appears as the last line(s) in the entry for each special tool, special TMDE, and other special support equipment. When density of equipments supported exceeds density spread indicated in the BOI, the total authorization is increased proportionately.
 - (4) The statement "END OF FIGURE" appears just below the last item description in Column 5 for a given figure in both Section II and Section III.
- g. **QTY (Column (7)).** The QTY (quantity per figure column) indicates the quantity of the item used in the breakout shown on the illustration figure, which is prepared for a functional group, subfunctional group, or an assembly. A "V" appearing in this column in lieu of a quantity indicates that the quantity is variable and the quantity may vary from application to application.

4. EXPLANATION OF COLUMNS (SECTION IV).

a. National Stock Number (NSN) Index.

- (1) STOCK NUMBER column. This column lists the NSN by National Item Identification Number (NIIN) sequence. The NIIN consists of the last nine digits of the NSN i.e.:

$$\text{NSN i.e. } \frac{\text{NSN}}{\text{NIIN}} \text{ (5305-01-574-1467).}$$

When using this column to locate an item, ignore the first 4 digits of the NSN. However, the complete NSN should be used when ordering items by stock number.

- (2) FIG. column. This column lists the number of the figure where the item is identified/located. The figures are in numerical order in Section II and Section III.
- (3) ITEM column. The item number identifies the item associated with the figure listed in the adjacent FIG. column. This item is also identified by the NSN listed on the same line.

4. EXPLANATION OF COLUMNS (SECTION IV) (CONT).

b. Part Number Index. Part numbers in this index are listed by part number in ascending alphanumeric sequence (i.e., vertical arrangement of letter and number combination which places the first letter or digit of each group in order A through Z, followed by the numbers 0 through 9 and each following letter or digit in like order).

(1) CAGEC column. The Commercial and Government Entity Code (CAGEC) is a 5-digit numeric code used to identify the manufacturer, distributor, or Government agency, etc., that supplies the item.

(2) PART NUMBER column. Indicates the primary number used by the manufacturer (individual, firm, corporation, or Government activity), which controls the design and characteristics of the item by means of its engineering drawings, specifications, and inspection requirements to identify an item or range of items.

(3) STOCK NUMBER column. This column lists the NSN for the associated part number and manufacturer identified in the PART NUMBER and CAGE columns to the left.

(4) FIG. column. This column lists the number of the figure where the item is identified/located in Sections II and III.

(5) ITEM column. This item number is that number assigned to the item as it appears in the figure referenced in adjacent figure number column.

5. SPECIAL INFORMATION.

a. Usable On Code. The usable on code appears in the lower left corner of the Description column heading. Usable on codes are shown as "UOC..." in the Description Column (justified left) on the last line applicable item description/nomenclature. Uncoded items are applicable to all models. Identification of the usable code in this publication is:

Code	Used On
076	Trailer, Palletized Load System (PLST), Model M1076

b. Fabrication Instructions. Bulk materials required to manufacture items are listed in the Bulk Material Functional Group of this RPSTL. Part numbers for bulk materials are also referenced in the description column of the line item entry for the item to be manufactured/fabricated. Detailed fabrication instructions for items source coded to be manufactured or fabricated are found in TM 9-2330-385-14.

c. Assembly Instructions. Detailed assembly instructions for items source coded to be assembled from component spare/repair parts are found in TM 9-2330-385-14. Items that make up the assembly are listed immediately following the assembly item entry or reference is made to an applicable figure.

d. Kits. Line item entries for repair parts kits appear in a group in Section II (see Table of Contents).

e. Index Numbers. Items which have the word BULK in the figure column will have an index number shown in the item number column. This index number is a cross-reference between the National Stock Number/Part Number Index and the Bulk Material List in Section II.

g. Associated Publications. The publications listed below pertain to the Palletized Load System and its components:

Publication	Short Title
TM 9-2330-385-14	Trailer, Palletized Load System (PLST) M1076

6. HOW TO LOCATE PARTS.

a. When National Stock Number or Part Number is NOT Known.

- (1) First. Using the table of contents, determine the assembly group or subassembly group to which the item belongs. This is necessary since figures are prepared for assembly groups and subassembly groups, and listings are divided into the same groups.
- (2) Second. Find the figure covering the assembly group or subassembly group to which the item belongs.
- (3) Third. Identify the item on the figure and note the item number.
- (4) Fourth. Refer to the Repair Parts List for the figure to find the part number for the item number noted on the figure.

b. When National Stock Number or Part Number is Known.

- (1) First. Using the Index of National Stock Numbers and Part Numbers, find the pertinent National Stock Number or Part Number. The NSN index is in National Item Identification Number (NIIN) sequence (see paragraph 4a.(1)). The part numbers in the Part Number index are listed in ascending alphanumeric sequence (see paragraph 4b.). Both indexes cross-reference you to the illustration figure and item number of the item you are looking for.
- (2) Second. After finding the figure and item number, verify that the item is the one you are looking for, then locate the item number in the repair parts list for the figure.

7. ABBREVIATIONS.

Abbreviations used in this manual are listed in MIL-STD-12.

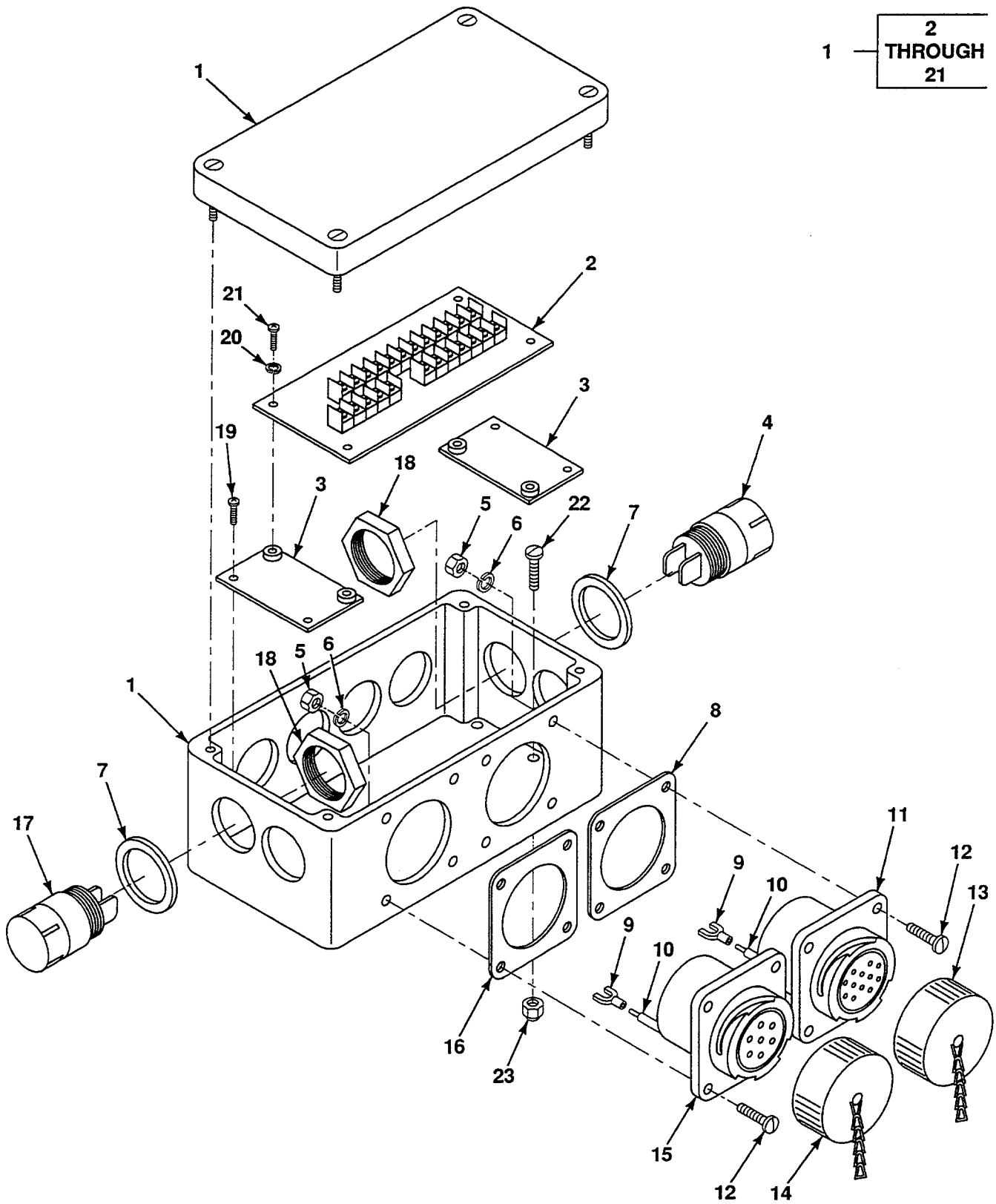


FIG. 1 FRONT ELECTRICAL BOX ASSEMBLY

SECTION II

TM9-2320-385-24P

(1) ITEM NO	(2) SMR CODE	(3) NSN	(4) CAGEC	(5) PART NUMBER	(6) DESCRIPTION AND USABLE ON CODES (UOC)	(7) QTY
					GROUP 06 ELECTRICAL SYSTEM	
					GROUP 0608 MISCELLANEOUS ITEMS	
					FIG. 1 FRONT ELECTRICAL BOX ASSEMBLY	
1	PFOFF	5930-01-396-7938	45152	1864490	BOX ASSY,ELECT,FRT	1
2	PFFZZ	5998-01-412-1350	45152	2HS176	.CIRCUIT BRD ASSY,F	1
3	PFFZZ	5365-01-371-0961	7J349	2510006	.SPACER,BOARD MTG	2
4	PFFZZ	5905-01-423-8059	91637	PH-25-7R7	.RESISTOR	2
5	PAFZZ	5310-00-934-9761	96906	MS35649-264	.NUT,PLAIN,HEXAGON NO. 6-32	8
6	PAFZZ	5310-00-929-6395	96906	MS35338-136	.WASHER,LOCK NO. 6	8
7	PAFZZ	5310-01-371-7178	86928	5716-36-032	.WASHER,FLAT 5/8 COPPER	4
8	PFOZZ	5330-01-358-9265	77940	16958	.GASKET	1
9	PAOZZ	5940-01-012-0738	06383	P18-6LF	.TERMINAL,LUG	12
10	MOOZZ	- - -	7J349	65180101-V	.WIRE ASSEMBLY MAKE FROM WIRE P/N 65180101 (7J349), USE QTY AS REQUIRED	1
11	PFOZZ	5935-01-359-5444	55561	CIR020R-28-51S-F 80	.SOCKET,12 PRONG	1
12	PAOZZ	5305-00-054-6656	96906	MS51957-32	.SCREW,MACHINE NO. 6-32X3/4	8
13	PFOZZ	5935-01-366-8216	77940	CIR 28TF	.CAP,DUST	1
14	PFOZZ	5935-01-367-6084	77940	CIR 24TF	.CAP,DUST	1
15	PFOZZ	5935-01-425-1921	77940	CIR020R-24-10S-F 80	.SOCKET,7 PRONG	1
16	PFOZZ	5330-01-271-1443	55561	16957	.GASKET	1
17	PFFZZ	5905-01-423-8063	91637	PH-25-23R7	.RESISTOR	2
18	PAFZZ	5310-01-371-4914	7J349	2835001	.NUT,HEX 5/8-18	4
19	PAFZZ	5305-00-054-6668	96906	MS51957-43	.SCREW,MACHINE M6X12	4
20	PAFZZ	5310-01-371-4935	7J349	2850801	.WASHER,LOCK NO. 8	4
21	PAFZZ	5305-01-424-3863	45152	2HS178	.SCREW,MACHINE M6X12	4
22	PAOZZ	5305-00-470-3321	96906	MS51849-74	SCREW,MACHINE NO. 10-24X1 1/2	4
23	PAOZZ	5310-00-208-1918	88044	AN365-1024A	NUT,SLFLKG,HEX NO. 10-24	4

END OF FIGURE