

TECHNICAL MANUAL
UNIT AND DIRECT SUPPORT MAINTENANCE
REPAIR PARTS AND SPECIAL TOOLS LIST
FOR
TANK, FABRIC, COLLAPSIBLE POL

3K 5430-00-268-8187 (MODEL M52983-03)
3K 5430-01-433-8528 (MODEL WTM3KF)
10K 5430-00-052-3412 (MODEL FCE574-81-1-A)
10K 5430-01-358-6157 (MODEL BA91-141)
10K 5430-01-414-9521 (MODEL BA91-141A)
10K (EXTRA ACCESSORIES) 5430-00-641-8552
20K 5430-01-215-7525 (MODEL BA92-162)
20K 5430-01-359-4943 (MODEL BA91-140)
20K 5430-01-414-9252 (MODEL BA91-140A)
50K 5430-00-182-8181 (MODEL M52983-50)
50K 5430-01-455-5676 (MODEL PD52983-50)
5K BBL 5430-01-160-3528 (MODEL PD5430-0001)

DISTRIBUTION STATEMENT A: Approved for public release; distribution is unlimited.

***This manual supersedes TM 5-5430-219-23P, dated 31 Aug 88**

HEADQUARTERS, DEPARTMENT OF THE ARMY
31 JANUARY 2000

TECHNICAL MANUAL

NO. 5-5430-219-23P

HEADQUARTERS
DEPARTMENT OF THE ARMY
WASHINGTON, D.C., 31 JANUARY 2000

**UNIT AND DIRECT SUPPORT MAINTENANCE
REPAIR PARTS AND SPECIAL TOOLS LIST**

- TANK, FABRIC, COLLAPSIBLE, POL**
3K 5430-00-268-8187 (MODEL M52983-03)
3K 5430-01-433-8528 (MODEL WTM3KF)
10K 5430-00-052-3412 (MODEL FCE574-81-1-A)
10K 5430-01-358-6157 (MODEL BA91-141)
10K 5430-01-414-9521 (MODEL BA91-141A)
10K (EXTRA ACCESSORIES) 5430-00-641-8552
20K 5430-01-215-7525 (MODEL BA92-162)
20K 5430-01-359-4943 (MODEL BA91-140)
20K 5430-01-414-9252 (MODEL BA91-140A)
50K 5430-00-182-8181 (MODEL M52983-50)
50K 5430-01-455-5676 (MODEL PD52983-50)
5K BBL 5430-01-160-3528 (MODEL PD5430-0001)

Current as of 13 January 2000

REPORTING ERRORS AND RECOMMENDING IMPROVEMENTS

You can help improve this publication. If you find any mistakes or if you know of a way to improve the procedures, please let us know. Submit your DA Form 2028-2 (Recommended Changes to Equipment Technical Publications), through the Internet, on the Army Electronic Product Support (AEPS) website. The Internet address is <http://aeps.ria.army.mil>. If you need a password, scroll down and click on "ACCESS REQUEST FORM". The DA Form 2028 is located in the ONLINE FORMS PROCESSING section of the AEPS. Fill out the form and click on SUBMIT. Using this form on the AEPS will enable us to respond quicker to your comments and better manage the DA Form 2028 program. You may also mail, fax or email your letter, DA Form 2028, or DA Form 2028-2 direct to: Commander, U.S. Army Tank-automotive and Armaments Command, ATTN: AMSTA-AC-NML, Rock Island, IL 61299-7630. The email address is amsta-ac-nml@ria.army.mil. The fax number is DSN 793-0726 or Commercial (309) 7820726.

DISTRIBUTION STATEMENT A: Approved for public release; distribution is unlimited

TABLE OF CONTENTS

	PAGE	ILLUS/ FIGURE
Section I Introduction	1	
Section II Repair Parts List.....	1-1	
Group 00 Tank, Fabric Collapsible		
Group 01 Valve Assembly, Filler and Discharge	1-1	
Filler and Discharge Valve Assembly	1-1	1
Gate Valve	2-1	2
Discharge Valve Assembly (Butterfly Valve).....	3-1	3
Butterfly Valve	4-1	4

* This manual supersedes TM 5-5430-219-23P, dated 31 AUGUST 1988

	PAGE	ILLUS/ FIGURE
Group 02	Discharge Valve Assembly (Ball Valve)..... 5-1	5
	Hose Assembly, Filler and Discharge 6-1	
	Filler and Discharge Hose Assembly 6-1	6
Group 03	Valve, Gate, Drain 7-1	
	Drain Gate Valve 7-1	7
	Drain Ball Valve 8-1	8
Group 04	Hose Assembly, Drain 9-1	
	Drain Hose Assembly..... 9-1	9
Group 05	Vent and Pipe Assembly 10-1	
	Vent and Pipe Assembly 10-1	10
Group 06	Assembly, Filler/Discharge 11-1	
	Filler/Discharge Assembly 11-1	11
Group 07	Fitting Assembly, Drain 12-1	
	Drain Fitting Assembly 12-1	12
	Drain Fitting Assembly 13-1	13
Group 08	Tank 14-1	
	Tank 14-1	14
Group 09	Repair Items, Emergency 15-1	
	Emergency Repair Items 15-1	15
Section III	Special Tools List (Not Applicable)	
Section IV	Cross Reference Indexes	
	National Stock Number Index I-1	
	Part Number Index I-3	

Section I. INTRODUCTION

C-1. SCOPE. This RPSTL lists and authorizes spares and repair parts, special tools, special test, measurement, and diagnostic equipment (TMDE), and other special support equipment required for performance of unit, direct support and general support maintenance of all sizes of Collapsible Fabric Fuel Tanks It authorizes the requisitioning, issue, and disposition of spares, repair parts and special tools as indicated by the source, maintenance and recoverability (SMR) codes.

C-2. GENERAL. In addition to this section, Introduction, this Repair Parts and Special Tools List is divided into the following sections:

a. Section II. Repair Parts List. A list of spares and repair parts authorized by this RPSTL for use in the performance of maintenance. This list also includes parts which must be removed for replacement of the authorized parts. Parts lists are composed of functional groups in ascending alphanumeric sequence, with the parts in each group listed in ascending figure and item number sequence. Bulk materials are listed in item name sequence in FIG. BULK at the end of the section. Repair kits are listed separately in their own functional group within Section II. Items are shown in the associated illustration.

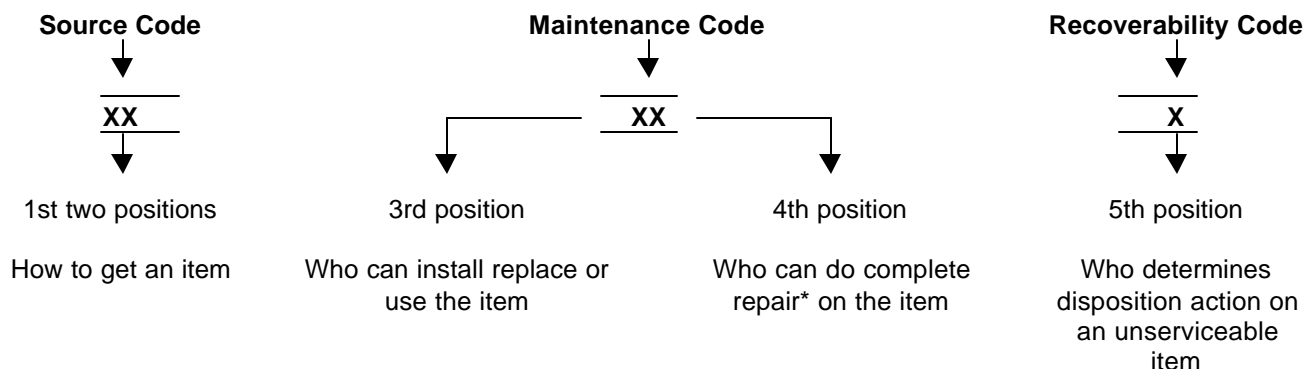
b. Section III. Special Tools List. A list of special tools, special TMDE, and special support equipment authorized by this RPSTL (as indicated by Basis of Issue (BOI) information in DESCRIPTION AND USABLE ON CODE column) for the performance of maintenance.

c. Section IV. Cross-Reference Index. There are two cross reference indexes in this RPSTL: The National Stock Number Index, listed in the National Item Identification Number sequence and the Part Number Index, listed in alphanumeric sequence of part numbers appearing in the listing. National stock numbers and part numbers are cross referenced to each illustration figure and item number appearance.

C-3. EXPLANATION OF COLUMNS (SECTIONS II AND III).

a. ITEM NO. (Column (1)). Indicates the number used to identify items called out on the illustration.

b. SMR Code (Column (2)). The Source, Maintenance, and Recoverability (SMR) code is a 5-position code containing supply/requisitioning information, maintenance level authorization criteria, and disposition instruction, as shown in the following breakout:



* Complete Repair: Maintenance capacity, capability, and authority to perform all corrective maintenance tasks of the "Repair" function in a use/user environment in order to restore serviceability to a failed item.

(1) Source Code. The source code tells you how to get an item needed for maintenance, repair, or overhaul of an end item/equipment. Explanations of source codes follows:

Source Code	Application/Explanation
PA PB PC** PD PE PF PG	<p>Stock items; use the applicable NSN to request/requisition items with these source codes. They are authorized to the category indicated by the code entered in the 3rd position of the SMR code.</p> <p>**NOTE: Items coded PC are subject to deterioration.</p>
KD KF KB	<p>Items with these codes are not to be requested/requisitioned individually. They are part of a kit which is authorized to the maintenance level indicated in the 3rd position of the SMR code. The complete kit must be requisitioned and applied.</p>
MO (Made at Unit/AVUM Level) MF MH (Made at GS Level) ML (Made at Specialized Repair Activity (SRA)) MD (Made at Depot)	<p>Items with these codes are not to be requested/requisitioned individually. They must be made from bulk material which is identified by the part number in the DESCRIPTION and USABLE ON CODE (UOC) column and listed in the Bulk Material group of the repair parts list in the RPSTL. If the item is authorized to you by the 3rd position code of the SMR code, but the source code indicates it is made at a higher level, order the item from the higher level of maintenance.</p>
AO (Assembled by Unit/AVUM Level) AF (Assembled by DS/AVIM Level) AL (Assembled by SRA) AD (Assembled by Depot)	<p>Items with these codes are not to be requested/requisitioned in dividually. The parts that make up the assembled item must be requisitioned or fabricated and assembled at the level of maintenance indicated by the source code. If the 3rd position code of the SMR code authorizes you to replace the item, but the source code indicates the items are assembled at a higher level, order the item from the higher level of maintenance.</p>
XA	Do not requisition an "XA"-coded item Order its next higher assembly. (Refer to the NOTE below.)
XB	If an "XB" item is not available from salvage, order it using the CAGEC and part number.
XC	Installation drawing, diagrams, instruction sheet, field service drawing, that is identified by manufacturer's part number.
XD	Item is not stocked. Order an "XD"-coded item through normal supply channels using the CAGEC and part number given, if no NSN is available.

NOTE

Cannibalization or controlled exchange, when authorized, may be used as a source of supply for items with the above source codes, except for those source coded "XA" or those aircraft support items restricted by requirements of AR 750-1.

(2) Maintenance Code. Maintenance codes tell you the level(s) of maintenance authorized to USE and REPAIR support items. The maintenance codes are entered in the third and fourth positions of the SMR code as follows:

(a) The maintenance code entered in the third position tells you the lowest maintenance level authorized to remove, replace, and use the item. The maintenance code entered in the third position will indicate authorization to the following levels of maintenance.

Maintenance Code	Application/Explanation
C	- Crew or operator maintenance done within unit/AVUM maintenance.
O	- Unit level/AVUM maintenance can remove, replace, and use the item.
F	- Direct support/AVIM maintenance can remove, replace, and use the item.
H	- General support maintenance can remove, replace, and use the item.
L	- Specialized repair activity can remove, replace, and use the item.
D	- Depot can remove, replace, and use the item

(b) The maintenance code entered in the fourth position tells whether or not the item is to be repaired and identifies the lowest maintenance level with the capability to do complete repair (i.e, perform all authorized repair functions.)

NOTE

Some limited repair may be done on the item at a lower level of maintenance, if authorized by the Maintenance Allocation Chart and SMR code.

Maintenance Code	Application/Explanation
O	- Unit/AVUM is the lowest level that can do complete repair of the item.
F	- Direct support/AVIM is the lowest level that can do complete repair of the item.
H	- General Support is the lowest level that can do complete repair of the item.
L	- Specialized repair activity is the lowest level that can do complete repair of the item.
D	- Depot is the lowest level that can do complete repair of the item.
Z	- Nonreparable. No repair is authorized.
B	- No repair is authorized. No parts or special tools are authorized for the maintenance of a "B" coded item. However, the item may be reconditioned by adjusting, lubricating, etc, at the user level.

(3) Recoverability Code. Recoverability codes are assigned to items to indicate the disposition action on unserviceable items. The recoverability code is shown in the fifth position of the SMR Code as follows:

Recoverability Codes	Application/Explanation
Z	- Nonreparable item. When unserviceable, condemn and dispose of the item at the level of maintenance shown in 3rd position of SMR Code.
O	- Repairable item. When uneconomically repairable, condemn and dispose of the item at unit or AVUM level.
F	- Repairable item. When uneconomically repairable, condemn and dispose of the item at the direct support or AVIM level.
H	- Repairable item. When uneconomically repairable, condemn and dispose of the item at the general support level.
D	- Repairable item. When beyond lower level repair capability, return to depot. Condemnation and disposal of the item not authorized below depot level.

Recoverability Codes

Application/Explanation

- L - Reparable item. Condemnation and disposal not authorized below specialized repair activity (SRA)
- A - Item requires special handling or condemnation procedures because of specific reasons (e.g., precious metal content, high dollar value, critical material, or hazardous material) Refer to appropriate manuals/directives for specific instructions.

c. NSN (Column (3)). The national stock number for the item is listed in this column..

d. CAGFC (Column (4)). The Commercial and Government Entity Code (CAGEC) is a 5-digit numeric code which is used to identify the manufacturer, distributor, or Government agency/activity that supplies the item.

e. PART NUMBER (Column (5)). Indicates the primary number used by the manufacturer, (individual, company, firm, corporation, or Government activity), which controls the design and characteristics of the item by means of its engineering drawings, specifications, standards, and inspection requirements to identify an item or range of items.

NOTE

When you use an NSN to requisition an item, the item you receive may have a different part number from the number listed.

f. DESCRIPTION AND USABLE ON CODE (UOC) (Column (6)). This column includes the following information:

- (1) The Federal item name and, when required, a minimum description to identify the item.
- (2) Part numbers of bulk materials are referenced in this column in the line entry to be manufactured/fabricated.
- (3) The statement "END OF FIGURE" appears just below the last item description in Column (6) for a given figure in both Section II and Section III.

g. QTY (Column (7)). The QTY (quantity per figure) column indicates the quantity of the item used in the breakout shown on the illustration/figure, which is prepared for a functional group, subfunctional group, or an assembly. A "V" appearing in this column instead of a quantity indicates that the quantity is variable and may vary from application to application.

C-4. EXPLANATION OF INDEX FORMAT AND COLUMNS (SECTION IV)

a. NATIONAL STOCK NUMBER (NSN) INDEX

(1) STOCK NUMBER Column. This column lists the NSN in national item identification number (NIIN) sequence. The NIIN consists of the last nine digits of the NSN.

NSN
 (e.g. 5305-01-574-1467)
 NIIN

When using this column to locate an item, ignore the first four digits of the NSN. Use the complete NSN (13 digits) when requisitioning items by stock number.

(2) FIG. Column. This column lists the number of the figure where the item is identified/located. The figures are in numerical order in Section II and Section III.

(3) ITEM Column. The Item number identifies the item associated with the figure listed in the adjacent FIG. column. This item is also identified by the NSN listed on the same line.

b. PART NUMBER INDEX. Part numbers in this index are listed by part number in ascending alphanumeric sequence (i.e., vertical arrangement of letter and number combination which places the first letter or digit of each group in order A through Z, followed by the numbers 0 through 9, and each following letter or digit in like order).

(1) PART NUMBER Column. Indicates the primary number assigned to the item by the manufacturer (individual, firm, corporation, or Government activity), which controls the design and characteristics of the item by means of its engineering drawings, specifications, standards, and inspection requirements to identify an item or range of items.

(2) FIG Column. This column lists the number of the figure where the item is identified/located in Section It and Section III.

(3) ITEM Column. The item number is that number assigned to the item as it appears in the figure referenced in adjacent figure number column.

C-5. SPECIAL INFORMATION

a. USABLE ON CODE. The usable on code appears in the lower left corner of the Description Column heading. Usable on codes are shown as "UOC..." in the Description Column (justified left) on the last line of the applicable item description/nomenclature. Uncoded items are applicable to all models. Identification of the usable on codes used in this RPSTL are:

Code	Used On
ECY	M52983-03 (3K TANK)
EQB	FCE574-81-1-A (10K TANK)
EQC	10K ACCESSORIES
ELS	BA92-162 (20K TANK)
EDC	M52983-50 (50K TANK)
EDD	50K GALLON TANK (TWO DRAIN FITTINGS)
ENQ	PD 5430-0001 (5K BARREL TANK)
FCM	BA91-140 (20K TANK)
FCN	BA91-141 (10K TANK)
FMC	BA91-140A (20K TANK)
FMD	BA91-141A (10K TANK)
FNR	WTM3KF (3K TANK)

b. INDEX NUMBERS. Items which have the word BULK in the figure column will have an index number shown in the item number column. This index number is a cross-reference between the National Stock Number/Part Number Index and the bulk material list in Section II.

c. ASSOCIATED PUBLICATIONS. The publication listed below pertain to the Collapsible Fabric Tanks and their components.

<u>Publication</u>	<u>Short Title</u>
TM 5-5430-218-13	Operator, Unit and Direct Support Maintenance Manual 3K Tank
TM 5-5430-210-12	Operator and Unit Maintenance Manual. 10K Tanks
TM 5-5430-219-13	Operator, Unit and Direct Support Maintenance Manual. 20K Tank
TM 5-5430-219-13	Operator, Unit and Direct Support Maintenance Manual. 50K Tank
TM 5-5430-214-13	Operator, Unit and Direct Support Maintenance Manual 5000 BBL Tank

C-6. HOW TO LOCATE REPAIR PARTS.

a. When National Stock Numbers or Part Numbers are NOT Known.

(1) First. Using the table of contents, determine the assembly or subassembly group to which the item belongs. This is necessary since figures are prepared for assembly groups and subassembly groups, and listings are divided into the same groups.

(2) Second. Find the figure covering the functional group or subfunctional group to which the item belongs.

(3) Third. Identify the item on the figure and note the Figure and Item Number to find the NSN.

(4) Fourth. Look in the repair parts list for the figure and item numbers. The NSNs and part numbers are on the same line as the associated item numbers.

b. When National Stock Number or Part Number is Known.

(1) First. If you have the national stock number, look in the STOCK NUMBER column of the National Stock Number Index. The NSN is arranged in national item identification number (NIIN) sequence (see paragraph 4a). Note the figure and item number next to the NSN.

(2) Second. Turn to the figure and locate the item number. Verify the item is the one you are looking for.

C-7. ABBREVIATIONS. Abbreviations used in this manual are listed in MIL-STD-12.

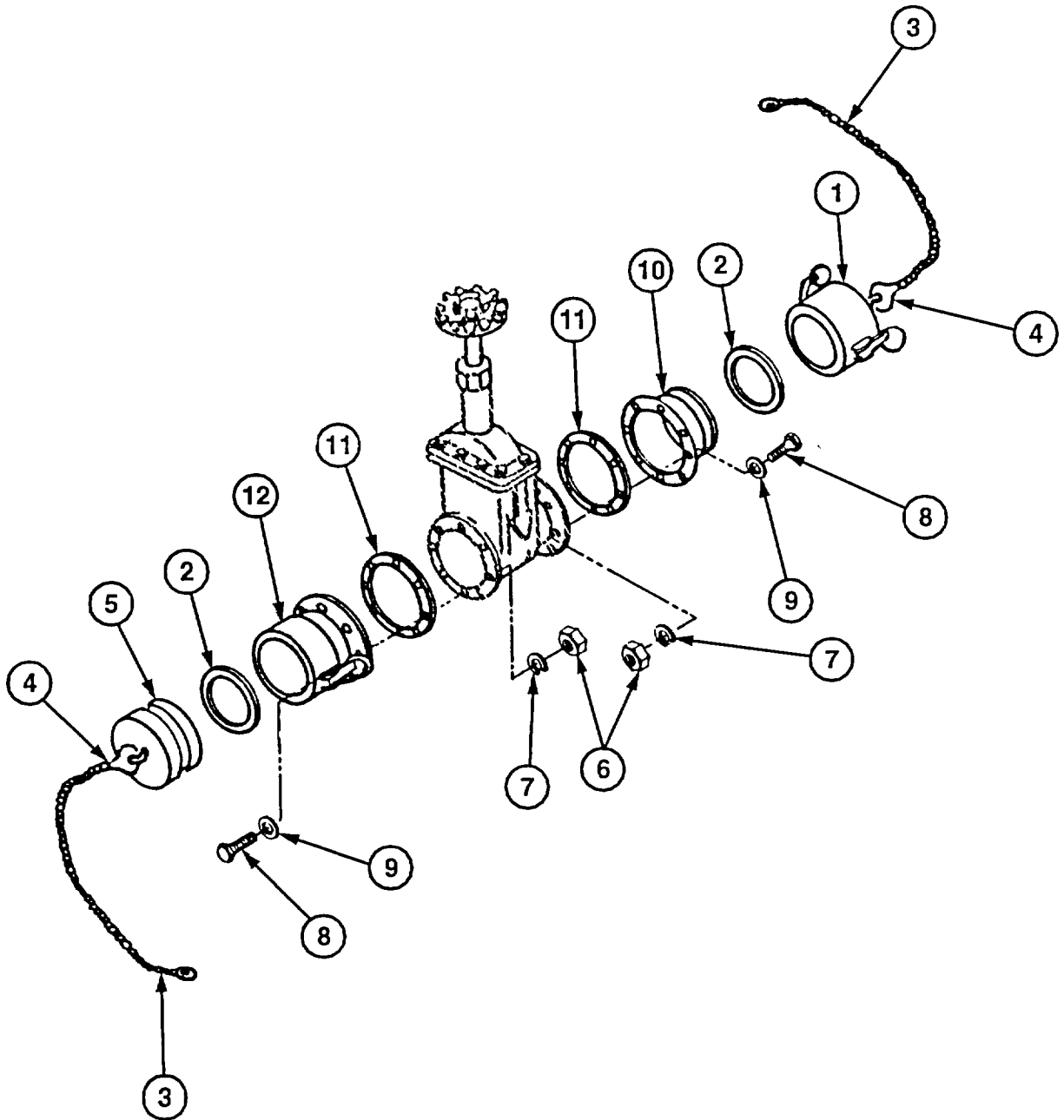


Figure 1. Filler and Discharge Valve Assembly