

**ARMY TM 9-2320-366-24P-1**  
**AIR FORCE T.O.36A12-1C-1156-1**

\*SUPERSEDES COPY DATED SEPT 1998

---

**UNIT, DIRECT SUPPORT, AND  
GENERAL SUPPORT MAINTENANCE  
REPAIR PARTS AND SPECIAL TOOLS LIST  
FOR  
M1083 SERIES, 5-TON, 6X6,  
MEDIUM TACTICAL VEHICLE (MTV)  
VOLUME NO. 1 OF 2**

MODEL	NSN	EIC
TRK, CAR., MTV, M1083 W/WN W/O WN	2320-01-360-1895 2320-01-354-3386	BT3 BR2
TRK, CAR., MTV, W/MATL HDLG EQPT (MHE), M1084	2320-01-354-3387	BR3
TRK, CAR., MTV, LWB, M1085 W/WN W/O WN	2320-01-360-1897 2320-01-354-4530	BT5 BR7
TRK, CAR., MTV, LWB, W/MATL HDLG EQPT (MHE), M1086	2320-01-354-4531	BR8
TRK, TRACTOR, MTV, M1088 W/WN W/O WN	2320-01-360-1892 2320-01-355-4332	BTY BTJ
TRK, WKR, MTV, M1089	2320-01-354-4528	BR4
TRK, DUMP, MTV, M1090 W/WN W/O WN	2320-01-360-1893 2320-01-354-4529	BTZ BR5
TRK, CHAS, MTV, M1092	2320-01-354-3382	BRZ
TRK, CAR., MTV, AIRDROP, M1093 W/WN W/O WN	2320-01-360-1896 2320-01-355-3063	BT4 BR9
TRK, DUMP, MTV, AIRDROP, M1094 W/WN W/O WN	2320-01-360-1984 2320-01-355-3062	BT2 BTK
TRK, CHAS, MTV, LWB, M1096	2320-01-354-4527	BR6

---

DISTRIBUTION STATEMENT A. Approved for public release; distribution is unlimited.

**HEADQUARTERS, DEPARTMENTS OF THE ARMY AND THE AIR FORCE**

**31 JULY 2001**

TECHNICAL MANUAL  
NO. 9-2320-366-24P-1

TECHNICAL ORDER  
NO. 36A12-1C-1156-1

HEADQUARTERS  
DEPARTMENTS OF THE ARMY  
AND THE AIR FORCE  
Washington, DC 31 July 2001

UNIT, DIRECT SUPPORT, AND  
GENERAL SUPPORT MAINTENANCE  
REPAIR PARTS AND SPECIAL TOOLS LIST  
FOR

**M1083 SERIES, 5-TON, 6x6  
MEDIUM TACTICAL VEHICLE (MTV)**

MODEL	NSN	EIC
TRK, CAR., MTV, M1083 W/WN	2320-01-360-1895	BT3
W/O WN	2320-01-354-3386	BR2
TRK, CAR., MTV, W/MATL HDLG EQPT (MHE), M1084	2320-01-354-3387	BR3
TRK, CAR., MTV, LWB, M1085 W/WN	2320-01-360-1897	BT5
W/O WN	2320-01-354-4530	BR7
TRK, CAR., MTV, LWB, W/MATL HDLG EQPT (MHE), M1086	2320-01-354-4531	BR8
TRK, TRACTOR, MTV, M1088 W/WN	2320-01-360-1892	BTY
W/O WN	2320-01-355-4332	BTJ
TRK, WKR, MTV, M1089	2320-01-354-4528	BR4
TRK, DUMP, MTV, M1090 W/WN	2320-01-360-1893	BTZ
W/O WN	2320-01-354-4529	BR5
TRK, CHAS, MTV, M1092	2320-01-354-3382	BRZ
TRK, CAR., MTV, AIRDROP, M1093 W/WN	2320-01-360-1896	BT4
W/O WN	2320-01-355-3063	BR9
TRK, DUMP, MTV, AIRDROP, M1094 W/WN	2320-01-360-1984	BT2
W/O WN	2320-01-355-3062	BTK
TRK, CHAS, MTV, LWB, M1096	2320-01-354-4527	BR6

**REPORTING ERRORS AND RECOMMENDING IMPROVEMENTS**

You can help improve this manual. If you find any mistakes or if you know a way to improve the procedures, please let us know. Submit your DA Form 2028 (Recommended Changes to Equipment Technical Publications, through the Internet, on the Army Electronic Product Support (AEPS) website. The internet address is <http://aeprs.ria.army.mil>. If you need a password, scroll down and click on "ACCESS REQUEST FORM".

The DA Form 2028 is located in the ONLINE FORMS PROCESSING section of the AEPS. Fill out the form and click on SUBMIT. Using this form on the AEPS will enable us to respond quicker to your comments and better manage the DA Form 2028 program. You may also mail, fax or Email your letter or DA Form 2028 direct to: AMSTA-LC-CI/TECH PUBS, TACOM-RI, 1 Rock Island Arsenal, Rock Island, IL 61299-7630. The email address is TACOM-TECH-PUBS @ria.army.mil. The fax number is DSN 793-0726 or Commercial (309) 782-0726.

**DISTRIBUTION STATEMENT A.** Approved for public release; distribution is unlimited.

\*This publication supercedes TM 9-2320-366-24P-1 DATED 15 Sept 1998.

## TABLE OF CONTENTS

	Page	Illus./ Figure
Section I. IINTRODUCTION		
Section II. REPAIR PARTS LIST		
Group 01 Engine		
0100 Dressed Engine with Container .....	1-1	1
0100 Engine Mounts .....	2-1	2
0100 Engine Brackets .....	3-1	3
0101 Cylinder Head with Valves and Gasket .....	4-1	4
0101 Cylinder Block .....	5-1	5
0102 Crankshaft .....	6-1	6
0102 Pulley and Damper .....	7-1	7
0103 Flywheel, Housing and Flex Plates .....	8-1	8
0104 Piston and Push Rods .....	9-1	9
0105 Idler Gear .....	10-1	10
0105 Camshaft .....	11-1	11
0105 Front and Side Housing Covers and Cam Followers .....	12-1	12
0105 Valve Cover and Gasket .....	13-1	13
0105 Rocker Arms .....	14-1	14
0105 Push Rods, Valves and Valve Springs .....	15-1	15
0106 Oil Cooler .....	16-1	16
0106 Oil Pan and Oil Pump .....	17-1	17
0106 Oil Hoses and Tubes .....	18-1	18
0106 Engine Oil Filter and Filter Base .....	19-1	19
0106 Engine Oil Sampling Valve .....	20-1	20
0106 Engine Oil Dipstick and Filler Tube .....	21-1	21
0106 Crankcase Breather .....	22-1	22
0108 Inlet Manifold, Gasket and Cover .....	23-1	23
0108 Exhaust Manifold .....	24-1	24
Group 03 Fuel System		
0301 Fuel Injector .....	25-1	25
0304 Air Cleaner .....	26-1	26
0305 Turbocharger .....	27-1	27
0305 Charge Air Cooler, Pipes, Brackets and Hoses .....	28-1	28
0306 Fuel Regulating Valve, Tubes, Fittings and Hoses .....	29-1	29
0306 Fuel Tank, Clamps and Brackets .....	30-1	30
0308 Governor and Fuel Transfer .....	31-1	31
0308 Fuel Control Linkage .....	32-1	32
0309 Fuel Filter .....	33-1	33
0309 Fuel/Water Separator .....	34-1	34
0311 Ether Starting Aid .....	35-1	35
0312 Accelerator, Hand Throttle and Linkage .....	36-1	36
Group 04 Exhaust System		
0401 Exhaust Pipe Heat Shield .....	37-1	37
0401 Exhaust Pipes, Brackets and Clamps .....	38-1	38
0401 Muffler, Ejector, Clamps and Brackets .....	39-1	39
0401 Muffler Heat Shield, Clamps and Resilient Mounts .....	40-1	40

	Page	Ilus./ Figure
Group 05		
Cooling System		
0501 Radiator Overflow Tank, Hoses and Fittings .....	41-1	41
0502 Radiator Fan Shroud .....	42-1	42
0503 Thermostat and Cooling Tubes .....	43-1	43
0504 Water Pump and Drive .....	44-1	44
0505 Engine Fan and Clutch Assembly .....	45-1	45
Group 06		
Electrical System		
0601 100 AMP Alternator, Brackets and Belt .....	46-1	46
0603 100 AMP Voltage Regulator .....	47-1	47
0603 M0017703MD Starter Motor and Solenoid .....	48-1	48
0606 M001770ME Starter and Solenoid .....	49-1	49
0607 Auxiliary Starter Solenoid .....	50-1	50
0607 Fuel Shutoff Solenoid .....	51-1	51
0607 Instrument Panel .....	52-1	52
0607 Auxiliary Panel and Switches .....	53-1	53
0607 WTEC II Dashboard Cable Assembly and Power Distribution Panel .....	54-1	54
0607 WTEC III Dashboard Cable Assembly and Power Distribution Panel .....	55-1	55
0608 Turn Signal Control .....	56-1	56
0608 Flasher Unit .....	57-1	57
0608 Fan and Differential Lock Solenoids .....	58-1	58
0608 CTIS Electronic Control Unit, ECU Dimmer Module and Frequency ECU .....	59-1	59
0608 100A Reverse Polarity Relay and Starter Shunt .....	60-1	60
0608 30K Winch Terminal Board Assembly .....	61-1	61
0608 M1089 Junction Box and Cables .....	62-1	62
0608 M1089 Remote Control Assembly .....	63-1	63
0608 M1084, M1086 and M1089 Remote Control Box Assembly .....	64-1	64
0608 M1084 and M1086 Junction Box and Cables .....	65-1	65
0609 Headlamp Assembly .....	66-1	66
0609 Cab and Door Clearance and Marker Lights .....	67-1	67
0609 Chassis Clearance and Marker Lights .....	68-1	68
0609 Backup Light .....	69-1	69
0609 M1088 and M1089 Stationary Worklight .....	70-1	70
0609 Composite Taillight Assembly .....	71-1	71
0609 Blackout Drive Light .....	72-1	72
0609 Composite Front Light Assembly .....	73-1	73
0610 Sensors, Switches and Transducers .....	74-1	74
0610 Air Brakes Pneumatic Switch .....	75-1	75
0610 M1089 Hoist Proximity Switch .....	76-1	76
0610 M1084 and M1086 Hoist/Jack Cylinder Proximity Sensors .....	77-1	77
0611 Horn.....	78-1	78
0612 Batteries, Box, Guard and Cables .....	79-1	79
0613 Engine Cable Routing Clamps and Insulators .....	80-1	80
0613 Engine Control Cable Assembly .....	81-1	81
0613 STE/ICE Cable Assembly .....	82-1	82
0613 12 Pin Intervehicle Cable .....	83-1	83
0613 Transmission Wiring Harness .....	84-1	84
0613 Transmission Harness .....	85-1	85
0613 WTEC III Transmission Wiring Harness .....	86-1	86
0613 M1090 and M1094 Solenoid Cable, Dump Body Switch, Clamps and Brackets .....	87-1	87

	Page	Illus./ Figure
Group 06		
Electrical System (continued)		
0613 Windshield Washer Pump/EMI Cable .....	88-1	88
0613 7 Pin Intervehicle Cable .....	89-1	89
0613 Cab Cable Routing Clamps and Brackets .....	90-1	90
0613 Warning Light Cable Assembly.....	91-1	91
0613 Door and Cab Marker Light Cable Assembly .....	92-1	92
0613 Air Drop Cab Clearance and Marker Lights Lower Cable Assembly .....	93-1	93
0613 Air Drop Cab Clearance and Marker Lights Upper Cable Assembly .....	94-1	94
0613 Winch Control Cable Assembly .....	95-1	95
0613 M1083, M1084, M1090, M1092, M1093 and M1094 Rear Lights Cable Assembly .....	96-1	96
0613 M1089 Rear Lights Cable Assembly .....	97-1	97
0613 M1088 Rear Lights Cable Assembly .....	98-1	98
0613 M1085, M1086 and M1096 Rear Lights Cable Assembly .....	99-1	99
0613 M1090 and M1094 Power Cable Assembly.....	100-1	100
0613 M1084 and M1086 Crane Power Control Cable Assembly .....	101-1	101
0613 M1084, M1086 and M1089 Remote Control Cable .....	102-1	102
0613 Front Lights Cable Assembly .....	103-1	103
0613 Start and Charge Cable Assembly .....	104-1	104
0613 PTO Cable Assembly .....	105-1	105
0613 Chemical Kit Cable Assembly .....	106-1	106
0613 Starter Ground Cable Assembly .....	107-1	107
0613 24V Reverse Polarity Relay Cable Assembly .....	108-1	108
0613 24V Alternator Cable Assembly .....	109-1	109
0613 24V Power Distribution Panel Cable Assembly .....	110-1	110
0613 12V Power Distribution Panel Cable Assembly .....	111-1	111
0613 Power Distribution Panel Ground Cable Assembly .....	112-1	112
0613 Starter Power Cable Assembly .....	113-1	113
0613 Battery Ground Cable Assembly .....	114-1	114
0613 12V Alternator Cable Assembly .....	115-1	115
0613 12V Reverse Polarity Relay Cable Assembly .....	116-1	116
0613 Clearance Light Cable Assembly .....	117-1	117
0613 CTIS Cable Assembly .....	118-1	118
0613 Windshield Wiper EMI Cable Assembly .....	119-1	119
0613 Starter to Chassis Ground Cable and Clamps .....	120-1	120
0613 Auxiliary Panel Cable Assembly.....	121-1	121
0613 M1089 Remote Control Vehicle Wiring Harness .....	122-1	122
0613 M1089 Control Panel Harness and Switches .....	123-1	123
0613 M1083, M1084, M1085, M1086, M1090, M1093 and M1094 Auxiliary Oil Cooler Fan Cable Assembly .....	124-1	124
0613 M1083, M1085, M1092, M1093 and M1096 Auxiliary Oil Cooler Fan Cable Assembly.....	125-1	125
0613 M1088 Auxiliary Oil Cooler Fan Cable Assembly .....	126-1	126
0613 M1084 and M1086 MHE Ground Cable .....	127-1	127
Group 07		
Transmission		
0705 WTEC II Transmission Electronic Control Unit .....	128-1	128
0705 WTEC II Vehicle Interface Module .....	129-1	129
0705 WTEC III Transmission Electronic Control Unit .....	130-1	130
0705 WTEC III Transmission Gear Selector .....	131-1	131

	Page	Illus./ Figure
Group 07	Transmission (continued)	
	0708 Torque Converter Module .....	132-1 132
	0710 Transmission with Container .....	133-1 133
	0710 Transmission Mounts .....	134-1 134
	0710 Transmission Dipstick .....	135-1 135
	0710 Front Support Assembly .....	136-1 136
	0710 P1 Planetary Carrier.....	137-1 137
	0710 P2 Planetary Carrier.....	138-1 138
	0710 P3 Planetary Carrier.....	139-1 139
	0710 Converter Housing Module .....	140-1 140
	0710 Mainshaft Module .....	141-1 141
	0710 Adapter Housing Module .....	142-1 142
	0713 C3, C4 and C5 Clutch .....	143-1 143
	0713 Rotating Clutch Module .....	144-1 144
	0714 Control Valve Module .....	145-1 145
	0721 Transmission Oil Filters .....	146-1 146
	0721 Transmission Oil Filler Tube and Cooler .....	147-1 147
	0721 M1088 and M1089 Transmission Auxiliary Oil Cooler .....	148-1 148
	0721 M1083, M1084, M1085, M1086, M1090 and M1094 Transmission Auxiliary Oil Cooler .....	149-1 149
	0721 M1083, M1084, M1085, M1086, M1090 and M1094 Transmission Auxiliary Oil Cooler Brackets, Hoses and Fittings .....	150-1 150
	0721 M1090 and M1094 Transmission Auxiliary Oil Cooler Hoses and Brackets .....	151-1 151
	0721 Scavenge Pump, Hose and Fittings .....	152-1 152
	0721 Transmission Oil Sampling Valve .....	153-1 153
Group 08	Transfer and Final Drive Assembly	
	0801 Transfer Case Module .....	154-1 154
Group 09	Propeller Shafts/Universal Joints Assembly	
	0900 M1083, M1084, M1085, M1088, M1092, M1093, M1094 and M1096 Driveshaft .....	155-1 155
	0900 M1086, M1089, and M1090 Driveshafts .....	156-1 156
Group 10	Front Axle	
	1000 Front Axle and Wheel End Assembly .....	157-1 157
	1002 Front Axle Differential Carrier .....	158-1 158
Group 11	Rear Axles	
	1100 Rear Axle and Wheel End Assembly .....	159-1 159
	1100 Bogie Axle .....	160-1 160
	1102 Rear Axle Differential Carrier .....	161-1 161
	1102 Intermediate Axle Differential Carrier .....	162-1 162
Group 12	Brakes	
	1202 Brake Assembly .....	163-1 163
	1202 Air Brake Chambers and Cage Bolts .....	164-1 164
	1208 Front Gladhands, Hoses and Fittings .....	165-1 165
	1208 Rear Gladhands, M1088 Selector Valves, Hoses and Fittings .....	166-1 166
	1208 Front Axle Quick Release Valve, Hoses and Fittings .....	167-1 167
	1208 Air Tanks, Clamps, Hoses and Fittings .....	168-1 168
	1208 M1083, M1092 and M1093 Pressure Protection Valve, Hoses and Fittings .....	169-1 169
	1208 M1090 and M1094 Pressure Protection Valve, Hoses and Fittings .....	170-1 170

	Page	Illus./ Figure
<b>Group 12 Brakes (continued)</b>		
1208 M1088 Pressure Protection Valve, Hoses and Fittings .....	171-1	171
1208 M1089 Pressure Protection Valve, Hoses and Fittings .....	172-1	172
1208 M1084, M1085, M1086 and M1096 Pressure Protection Valve, Hoses and Fittings .....	173-1	173
1208 Booster Valve, Hoses and Fittings .....	174-1	174
1208 CTIS Quick Release Valves, Vents, Clamps, Hoses and Fittings .....	175-1	175
1208 Air Brake Protection Valve, Hoses and Fittings .....	176-1	176
1208 Load Sensing Valve, Hoses and Fittings .....	177-1	177
1208 Anti-Compounding Relay Valve, Hoses, and Fittings .....	178-1	178
1208 Air Relay Valve, Hoses, and Fittings .....	179-1	179
1208 Two-way Check Valve, Hoses and Fittings .....	180-1	180
1208 Inversion Valve, Hoses and Fittings .....	181-1	181
1208 M1083, M1088, M1090, M1092, M1093 and M1094 Rear Brake Hoses and Fittings .....	182-1	182
1208 M1084, M1085, M1086 and M1096 Rear Brake Hoses and Fittings.....	183-1	183
1208 M1089 Rear Brake Hoses and Fittings .....	184-1	184
1208 M1083 and M1092 Rear Axle Hose Clamps and Brackets .....	185-1	185
1208 M1085 and M1096 Rear Axle Hose Clamps and Brackets .....	186-1	186
1208 M1084, M1088 and M1090 Rear Axle Hose Clamps and Brackets .....	187-1	187
1208 M1094 Rear Axle Hose Clamps and Brackets.....	188-1	188
1208 M1089 Rear Axle Hose Clamps and Brackets.....	189-1	189
1208 M1093 Rear Axle Hose Clamps and Brackets.....	190-1	190
1208 M1083 and M1092 Pneumatic Hose Routing Loop Clamps and Brackets .....	191-1	191
1208 M1086 Pneumatic Hose Routing Loop Clamps and Brackets .....	192-1	192
1208 M1085 and M1096 Pneumatic Hose Routing Loop Clamps and Brackets .....	193-1	193
1208 M1084 Pneumatic Hose Routing Loop Clamps and Brackets .....	194-1	194
1208 M1090 Pneumatic Hose Routing Loop Clamps and Brackets .....	195-1	195
1208 M1088 Pneumatic Hose Routing Loop Clamps and Brackets .....	196-1	196
1208 M1089 Pneumatic Hose Routing Loop Clamps and Brackets .....	197-1	197
1208 M1093 Pneumatic Hose Routing Loop Clamps and Brackets .....	198-1	198
1208 M1094 Pneumatic Hose Routing Loop Clamps and Brackets .....	199-1	199
1208 Brake Pedal, Foot Control Valve, Hoses and Fittings .....	200-1	200
1208 Park and Trailer Air Supply Valves, Hoses and Fittings .....	201-1	201
1208 Low Pressure Transmitter Two Way Check Valves, Hoses and Fittings .....	202-1	202
1208 Park Control, Emergency/Service Gladhand Two Way Check Valve, Hoses and Fittings .....	203-1	203
1208 Manifold Valve, Hoses and Fittings .....	204-1	204
1209 Air Compressor .....	205-1	205
1211 Trailer Service Brake Switch, Hoses and Fittings .....	206-1	206
<b>Group 13 Wheels</b>		
1311 Wheel Assembly and CTIS Valve .....	207-1	207
1313 Tire .....	208-1	208
<b>Group 14 Steering</b>		
1401 Tie Rod and Tie Rod Ends .....	209-1	209
1401 Steering Wheel and Column .....	210-1	210
1407 Steering Gear, Pitman Arm and Drag Link .....	211-1	211
1410 Power Steering Pump .....	212-1	212
1411 Power Steering Hoses .....	213-1	213

	Page	Illus./ Figure
Group 14	Steering (continued)	
	1413 Power Steering Reservoir .....	214-1
Group 15	Frame and Towing Attachments	214
	1501 M1083 and M1092 Frame Assembly.....	215-1
	1501 M1093 Frame Assembly .....	216-1
	1501 M1088 Frame Assembly .....	217-1
	1501 M1084 Frame Assembly .....	218-1
	1501 M1089 Frame Assembly .....	219-1
	1501 M1090 Frame Assembly .....	220-1
	1501 M1094 Frame Assembly .....	221-1
	1501 M1086 Frame Assembly .....	222-1
	1501 M1085 and M1096 Frame Assembly .....	223-1
	1501 M1089 Catwalk and Ladder .....	224-1
	1501 M1089 Underplates .....	225-1
	1501 Air Drop Parachute Suspension Assembly .....	226-1
	1501 M1088 Platform .....	227-1
	1501 M1089 Tool Box Support Assembly .....	228-1
	1501 M1089 Stoplight and Worklight Mount Brackets .....	229-1
	1501 M1089 Stowage Box Mount Brackets and Cushions .....	230-1
	1501 Rear Light Carrier .....	231-1
	1501 Front Bumper and Gravel Deflector .....	232-1
	1501 Front Lift Beam .....	233-1
	1501 Boom Rest .....	234-1
	1503 Pintle Hook .....	235-1
	1504 Spare Tire Retainer .....	236-1
	1506 M1088 Fifth Wheel Assembly .....	237-1
Group 16	Springs and Shocks	
	1601 Front Leaf Spring Suspension .....	238-1
	1601 Front Resilient Mount and Angle Brackets .....	239-1
	1601 Rear Leaf Spring Suspension and Torque Rods .....	240-1
	1601 Rear Resilient Mount and Mechanical Stop .....	241-1
	1604 Front Shocks .....	242-1
	1604 Rear Shocks .....	243-1
	1605 Rear Stabilizer Bar .....	244-1
Group 18	Body and Cab	
	1801 Standard Cab Assembly, Doors and Hinges .....	245-1
	1801 Air Drop Cab Assembly, Doors and Hinges .....	246-1
	1801 Dashboard .....	247-1
	1801 Roof Hatch and Front Grille .....	248-1
	1801 Engine Splash Guards .....	249-1
	1801 Cab Door Fittings .....	250-1
	1801 Door Locks and Handles .....	251-1
	1801 Air Drop Davit Boom Assembly .....	252-1
	1801 Front Cab Supports .....	253-1
	1801 Rear Cab Support, Leveling Valve, Latch, Air Spring, Hoses and Fittings.....	254-1
	1801 Cab Fenders .....	255-1
	1802 Standard Cab Windows .....	256-1
	1802 Air Drop Cab Windows .....	257-1
	1802 Cab Door Windows and Fittings .....	258-1
	1802 M1083 Rear Fenders and Splash Guards .....	259-1
	1802 M1084 Rear Fenders and Splash Guards .....	260-1
	1802 M1085 Rear Fenders and Splash Guards .....	261-1



	Page	Illus./ Figure
Group 18	Body and Cab (continued)	
	1802 M1086 Rear Fenders and Splash Guards .....	262-1 262
	1802 M1088 Rear Fenders and Splash Guards .....	263-1 263
	1802 M1090 and M1094 Rear Fenders and Splash Guards .....	264-1 264
	1802 Cab Steps .....	265-1 265
	1804 Cab Drain Plugs .....	266-1 266
	1805 Cab Floor Coverings and Door Seals .....	267-1 267
	1806 Standard Cab Liners, Boarding Handles and Sun Visors .....	268-1 268
	1806 Air Drop Panels, Visors and Boarding Handles .....	269-1 269
	1806 Center Seat and Seat Belt .....	270-1 270
	1806 Passenger Seat and Seat Belt .....	271-1 271
	1806 Driver Seat and Seat Belt .....	272-1 272
	1808 Tool Box .....	273-1 273
	1808 Cab Storage Box Assembly .....	274-1 274
	1810 M1083 Cargo Bed Assembly .....	275-1 275
	1810 M1093 Cargo Bed Assembly .....	276-1 276
	1810 M1086 Cargo Bed Assembly .....	277-1 277
	1810 M1084 Cargo Bed Assembly .....	278-1 278
	1810 M1085 Cargo Bed Assembly .....	279-1 279
	1810 M1083, M1084 and M1093 Cargo Bed Doors, Latch and Fittings .....	280-1 280
	1810 M1086 Cargo Bed Doors, Latch and Fittings .....	281-1 281
	1810 M1085 Cargo Bed Doors, Latch and Fittings .....	282-1 282
	1810 Cargo Bed Dropside Assembly .....	283-1 283
	1810 Load Spreader Rear Lift Beam .....	284-1 284
	1810 Bow Stowage Door, Hinge and Latch .....	285-1 285
	1810 M1090 Tailgate and Fittings .....	286-1 286
	1810 M1090 and M1094 Body .....	287-1 287
	1810 M1090 and M1094 Sub-Frame Assembly .....	288-1 288
	1810 M1094 Airdrop Rear Lifting Eye and Bed Hold Down Bracket .....	289-1 289
	1810 M1090 and M1094 Ladder and Brackets .....	290-1 290
	1812 M1089 Tool Boxes .....	291-1 291
	1812 M1089 Ladder .....	292-1 292
	1812 M1089 Vise Mount .....	293-1 293
Group 20	Hoist, Winch, Power Control Unit and Power Take-Off	
	2001 30K Winch Brackets, Valves, Hoses and Fittings .....	294-1 294
	2001 30K Winch Pneumatic and Valve Manifold Assembly .....	295-1 295
	2001 30K Winch Assembly .....	296-1 296
	2001 30K Winch Hydraulic Motor .....	297-1 297
	2001 M1089 Monoblock and Relief Valve .....	298-1 298
	2001 15K Self Recovery Winch Assembly .....	299-1 299
	2001 15K Self Recovery Winch Cable Guides, Rollers and Brackets .....	300-1 300
	2001 M1089 Underlift Assembly and Splash Guards .....	301-1 301
	2001 M1089 Underlift Crossbar Assembly and Front Towing Adapter .....	302-1 302
	2001 M1089 Underlift Lower Arm Folding Boom Cylinder .....	303-1 303
	2001 M1089 Underlift Stinger Cylinder Assembly .....	304-1 304
	2001 M1089 Underlift Right and Left Stiffleg .....	305-1 305
	2001 M1089 Payout Motor Assembly .....	306-1 306
	2001 M1089 Underlift Stiffleg Cylinder Assembly .....	307-1 307
	2001 M1089 Underlift Folding Boom Frame.....	308-1 308
	2001 M1089 Underlift Fold Cylinder Assembly .....	309-1 309
	2001 M1089 Underlift Upper and Lower Arm Assembly .....	310-1 310

	Page	Illus./ Figure
Group 20	Hoist, Winch, Power Control Unit and Power Take-Off (continued)	
2001 M1089	Underlift Telescope Lift Cylinder Assembly .....	311-1 311
2001 M1089	Underlift Camlock Assembly .....	312-1 312
2001 M1089	Underlift Hydraulic Valves, Hoses and Fittings .....	313-1 313
2001 M1089	Crane Hydraulic Pressure Tubes, Hoses and Clamps .....	314-1 314
2001 M1089	Crane and Outrigger Pads .....	315-1 315
2001 M1089	Hydraulic Tank and Manifold Assembly .....	316-1 316
2001 M1089	Turntable and Subframe .....	317-1 317
2001 M1089	Boom Base and Angle Indicator .....	318-1 318
2001 M1089	Boom Mid Section .....	319-1 319
2001 M1089	Boom Fly Section .....	320-1 320
2001 M1089	Lift Cylinder and Mounting Pins .....	321-1 321
2001 M1089	Erection Cylinder .....	322-1 322
2001 M1089	Tension Link Assembly .....	323-1 323
2001 M1089	Mast Assembly .....	324-1 324
2001 M1089	Hoist Assembly .....	325-1 325
2001 M1089	Hoist Hydraulic Motor .....	326-1 326
2001 M1089	Speed Gear Assembly .....	327-1 327
2001 M1089	Motor Control Valve .....	328-1 328
2001 M1089	Oil Filled Disc Brake .....	329-1 329
2001 M1089	Cable Follower Assembly .....	330-1 330
2001 M1089	Boom Telescopic Cylinder Assembly .....	331-1 331
2001 M1089	Overload Shutdown .....	332-1 332
2001 M1089	Swing Drive Assembly .....	333-1 333
2001 M1089	Swing Drive Hydraulic Motor and Cross Relief Valve .....	334-1 334
2001 M1089	Outrigger Beam, Hoses and Fittings .....	335-1 335
2001 M1089	Outrigger Extend Cylinder .....	336-1 336
2001 M1089	Outrigger Jack Cylinder .....	337-1 337
2001 M1089	Hand Pump Assembly, Hoses and Fittings .....	338-1 338
2001 M1089	Hydraulic Swing Hoses and Fittings .....	339-1 339
2001 M1089	Hydraulic Lift Hoses and Fittings .....	340-1 340
2001 M1089	Hydraulic Hoist Hoses and Fittings .....	341-1 341
2001 M1089	Hydraulic Telescope Hoses and Fittings .....	342-1 342
2001 M1089	Hydraulic Erection Hoses and Fittings .....	343-1 343
2001 M1089	Hook Block and Cable Assembly .....	344-1 344
2001 M1089	Eight Bank Valve Housing Assembly .....	345-1 345
2001 M1089	Eight Bank Valve Fittings .....	346-1 346
2001 M1089	Eight Bank Swing Control Valve Assembly .....	347-1 347
2001 M1089	Eight Bank Telescope Control Valve Assembly .....	348-1 348
2001 M1089	Eight Bank Boom Control Valve Assembly .....	349-1 349
2001 M1089	Eight Bank Hoist Control Valve Assembly .....	350-1 350
2001 M1089	Eight Bank Left Outrigger Jack Control Valve Assembly .....	351-1 351
2001 M1089	Eight Bank Mast Control Valve Assembly .....	352-1 352
2001 M1089	Eight Bank Outrigger Extend Control Valve Assembly .....	353-1 353
2001 M1089	Eight Bank Right Outrigger Jack Control Valve Assembly .....	354-1 354
2001 M1089	Eight Bank Unloader Control Valve Assembly .....	355-1 355
2001 M1089	Eight Bank Swing Control Valve Manifold Assembly and Fittings .....	356-1 356
2001 M1089	Hydraulic Hoses, Tubes and Fittings .....	357-1 357
2001 M1089	Three Stage Hydraulic Pump, Hoses and Fittings .....	358-1 358
2001 M1089	Control Panel Assembly, Tubes, Hoses and Fittings .....	359-1 359
2001 M1089	Selector Valve Assembly, Hoses and Fittings .....	360-1 360

	Page	Illus./ Figure
Group 20 Hoist, Winch, Power Control Unit and Power Take-Off (continued)		
2001 M1089 Upper Control Valve Assembly and Handles .....	361-1	361
2001 M1089 Upper Control Valve Assembly .....	362-1	362
2001 M1089 Upper Directional Control Valve .....	363-1	363
2001 M1089 Upper Pump Valve .....	364-1	364
2001 M1089 Upper Pneumatic Actuator Valve .....	365-1	365
2001 M1089 Lower Control Valve Assembly and Handles .....	366-1	366
2001 M1089 Lower Control Valve Assembly .....	367-1	367
2001 M1089 Underlift Fold Control Valve .....	368-1	368
2001 M1089 Underlift Fold Position Control Valve .....	369-1	369
2001 M1089 Stinger Position Control Valve .....	370-1	370
2001 M1089 Lower Control Valve Tubes, Hoses and Fittings.....	371-1	371
2001 M1089 Linear Directional Control Valve Assembly .....	372-1	372
2001 M1084 and M1086 Crane and Jack Cylinder Pads .....	373-1	373
2001 M1084 and M1086 Remote Control and Cable Stowage Box .....	374-1	374
2001 M1084 and M1086 Hook Block Assembly and Cable .....	375-1	375
2001 M1084 and M1086 Tension Link Assembly .....	376-1	376
2001 M1084 and M1086 Mast Assembly .....	377-1	377
2001 M1084 and M1086 Hoist Assembly and Tension Load Cell .....	378-1	378
2001 M1084 and M1086 Hoist Hydraulic Motor .....	379-1	379
2001 M1084 and M1086 Speed Gear Assembly .....	380-1	380
2001 M1084 and M1086 Motor Control Valve .....	381-1	381
2001 M1084 and M1086 Oil Filled Disc Brake .....	382-1	382
2001 M1084 and M1086 Cable Follower Assembly .....	383-1	383
2001 M1084 and M1086 Lift Cylinder Assembly .....	384-1	384
2001 M1084 and M1086 Erection Cylinder Assembly .....	385-1	385
2001 M1084 and M1086 Boom Base, Angle Indicator and Cylinder Mount Pins ...	386-1	386
2001 M1084 and M1086 Boom Mid Section .....	387-1	387
2001 M1084 and M1086 Boom Fly Section and Boom Sheave .....	388-1	388
2001 M1084 and M1086 Telescope Cylinder Assembly .....	389-1	389
2001 M1084 and M1086 Overload Shutdown .....	390-1	390
2001 M1084 and M1086 Turntable, Lock Pin and Cylinder Mount Pins .....	391-1	391
2001 M1084 and M1086 Swing Drive Assembly, Hydraulic Motor and Cross Relief Valve .....	392-1	392
2001 M1084 and M1086 Supply and Return Tubes and Hoses .....	393-1	393
2001 M1084 and M1086 Hydraulic Swing Hoses and Fittings .....	394-1	394
2001 M1084 and M1086 Hydraulic Lift Hoses .....	395-1	395
2001 M1084 and M1086 Hydraulic Hoist Hoses .....	396-1	396
2001 M1084 and M1086 Hydraulic Telescope Hoses .....	397-1	397
2001 M1084 and M1086 Hydraulic Outrigger Hoses .....	398-1	398
2001 M1084 and M1086 Hydraulic Erection Hoses .....	399-1	399
2001 M1084 and M1086 Outrigger Jack Cylinder Assembly .....	400-1	400
2001 M1084 and M1086 Hand Pump Assembly .....	401-1	401
2001 M1084 and M1086 Hydraulic Control Valve Housing Assembly .....	402-1	402
2001 M1084 and M1086 Four Way Swing Control Valve Assembly .....	403-1	403
2001 M1084 and M1086 Four Way Telescope Control Valve Assembly .....	404-1	404
2001 M1084 and M1086 Four Way Lift Control Valve Assembly .....	405-1	405
2001 M1084 and M1086 Four Way Hoist Control Valve Assembly .....	406-1	406
2001 M1084 and M1086 Four Way Directional and Relief Valves .....	407-1	407
2001 M1084 and M1086 Four Way Lift/Hoist Valves Manifold .....	408-1	408
2001 M1084 and M1086 Four Way Center Manifold .....	409-1	409
2001 M1084 and M1086 Four Way Telescope/Swing Valves Manifold .....	410-1	410

	Page	Illus./ Figure
Group 20	Hoist, Winch, Power Control Unit and Power Take Off (continued)	
	2001 M1084 and M1086 Three Way Left Stabilizer Control Valve Assembly ..... 411-1	411
	2001 M1084 and M1086 Three Way Mast Control Valve Assembly ..... 412-1	412
	2001 M1084 and M1086 Three Way Right Stabilizer Control Valve Assembly..... 413-1	413
	2001 M1084 and M1086 Three Way Unloader Control Valve Assembly ..... 414-1	414
	2001 M1084 and M1086 Three Way Control Valve Manifold ..... 415-1	415
	2001 M1084 and M1086 Turntable Stop ..... 416-1	416
	2004 Power Take-Off Assembly ..... 417-1	417
Group 21	Bumpers, Guards and Marine Fenders	
	2101 M1090 and M1094 Cab Protector Assembly ..... 418-1	418
Volume 2 of 2		
Group 22	Body Chassis and Accessories	
	2201 M1090 and M1094 Body Cover ..... 419-1	419
	2202 Windshield Washer Reservoir ..... 420-1	420
	2202 Windshield Wiper and Motor ..... 421-1	421
	2202 Cab Mirrors ..... 422-1	422
	2202 Front Reflectors ..... 423-1	423
	2202 Rear Reflectors ..... 424-1	424
	2207 Personnel Heater Assembly ..... 425-1	425
	2210 M1084 and M1086 Decals and Data Plates..... 426-1	426
	2210 Data and Identification Plates..... 427-1	427
	2210 M1089 Decals and Data Plates ..... 428-1	428
	2210 M1090 Data and Identification Plates ..... 429-1	429
Group 24	Hydraulic and Fluid Systems	
	2401 Air/Hydraulic Power Unit, Hoses and Fittings ..... 430-1	430
	2401 Back-up Hydraulic Pump, Hoses and Fittings..... 431-1	431
	2402 Four Way Relief Valve ..... 432-1	432
	2402 Hydraulic Manifold, Hoses and Fittings ..... 433-1	433
	2402 Hydraulic Manifold Assembly ..... 434-1	434
	2402 Hydraulic Manifold Assembly ..... 435-1	435
	2404 Spare Tire Retainer Lift Cylinder, Hoses and Fittings ..... 436-1	436
	2404 Cab Hydraulic Cylinder, Hoses and Fittings ..... 437-1	437
	2404 M1090 and M1094 Dump Body Lift Cylinder ..... 438-1	438
	2406 Hydraulic Rotary Pump, Winch Control Valve, Hoses and Fittings ..... 439-1	439
	2406 Winch Control Valve Assembly ..... 440-1	440
	2406 M1084 and M1086 Hydraulic Rotary Pump, Hoses and Fittings ..... 441-1	441
	2406 M1090 and M1094 Hydraulic Rotary Pump, Hoses and Fittings ..... 442-1	442
	2406 M1090 and M1094 Hydraulic Rotary Pump, Winch Control Valve, Hoses and Fittings ..... 443-1	443
	2406 M1089 External Hydraulic Power Ports ..... 444-1	444
	2407 Suspension Cylinder, Hoses and Fittings ..... 445-1	445
	2408 Hydraulic Reservoir and Filter..... 446-1	446
Group 33	Special Purpose Kits	
	3301 Engine Container ..... 447-1	447
	3301 Transmission Container ..... 448-1	448
	3303 Options Panel Kit ..... 449-1	449
	3307 Amber Warning Light ..... 450-1	450
	3307 Flywheel Housing Vent Kit ..... 451-1	451
	3307 M1083 and M1093 Troopseat Kit ..... 452-1	452
	3307 M1085 Troopseat Kit ..... 453-1	453
	3307 M1090 and M1094 Troopseat Kit ..... 454-1	454

	Page	Illus./ Figure
Group 33	Special Purpose Kits (continued)	
	3307 M1083, M1093 Soft Top Cover Kit .....	455-1 455
	3307 M1090 and M1094 Soft Top Cover Kit .....	456-1 456
	3307 M1085 Soft Top Cover Kit .....	457-1 457
	3307 200A Polarity Protection Device, Terminal Block, Cables and Brackets .....	458-1 458
	3307 200 AMP Alternator and Regulator .....	459-1 459
	3307 Reserve Fuel and Water Bottle Brackets .....	460-1 460
	3307 Light Material Handling Crane Kit .....	461-1 461
	3307 Light Material Handling Crane Winch Assembly .....	462-1 462
	3307 Light Material Handling Crane Hoist Assembly .....	463-1 463
	3307 Light Material Handling Crane Mast and Swing Assembly .....	464-1 464
	3307 Light Material Handling Crane Handle Assembly .....	465-1 465
	3307 Light Material Handling Crane Boom Assembly .....	466-1 466
	3307 Light Material Handling Crane Cable Extension .....	467-1 467
	3307 Light Material Handling Crane Plug and Circuit Breaker .....	468-1 468
	3307 Shelter Tiedown Kit .....	469-1 469
	3307 M1085 Shelter Tiedown Kit .....	470-1 470
	3307 M1083, M1085 and M1093 Collapsible Drums Tiedown Kit .....	471-1 471
	3307 Tank and Pump Unit Tiedown Kit .....	472-1 472
	3307 Pintle Hook Extension Kit .....	473-1 473
	3307 S-280 Shelter Ladder Adapter Kit .....	474-1 474
	3307 Crane Adapter Kit .....	475-1 475
Group 34	Armament, Sighting and Fire Control Material	
	3401 Machine Gun Mounting Kit .....	476-1 476
	3402 Small Arms Mount .....	477-1 477
Group 39	Searchlight and Electrical Illuminating Equipment	
	3901 M1089 Amber Warning Light .....	478-1 478
	3903 Amber Light Mast Assembly .....	479-1 479
Group 43	Gas, Air and Vacuum Systems	
	4316 M1090 and M1094 Tailgate Solenoid Valve, Manual Override Valve, Hoses and Fittings .....	480-1 480
	4318 M1090 and M1094 Tailgate Pneumatic Cylinder .....	481-1 481
	4321 Air Dryer, Hoses and Fittings .....	482-1 482
	4321 Wet Air Tank, Clamps, Hoses and Fittings .....	483-1 483
Group 47	Measuring Gages	
	4702 Air Filter Warning Indicator .....	484-1 484
Group 94	Repair Kits	
	9401 Repair Kits .....	Kits-1
Group 95	Hardware Supplies and Bulk Material, Common	
	9501 Bulk Items .....	Bulk-1
Section III. SPECIAL TOOLS LIST		
Group 26	Tools and Test Equipment	
	2604 Unit Maintenance Special Tools .....	485-1 485
	2604 Direct Support Maintenance Special Tools .....	486-1 486
	2604 General Support Maintenance Special Tools .....	487-1 487
Section IV. CROSS REFERENCE INDEX		
	Part Number Index .....	I-1
	National Stock Number Index .....	I-227
	Figure and Item Number Index .....	I-329

# UNIT, DIRECT SUPPORT, AND GENERAL SUPPORT MAINTENANCE REPAIR PARTS AND SPECIAL TOOLS LIST

## SECTION I. INTRODUCTION

### 1. Scope.

This RPSTL lists and authorizes spares and repair parts; special tools; special test, measurement, diagnostic equipment (TMDE); and other special support equipment required for performance of unit, direct support, and general support maintenance of the M1083 Series MTV. It authorizes the requisitioning, issue, and disposition of spares, repair parts and special tools as indicated by the source, maintenance and recoverability (SMR) codes.

### 2. General.

In addition to Section I, Introduction, this Repair Parts and Special Tools List is divided into the following sections:

a. Section II. Repair Parts List. A list of spares and repair parts authorized by this RPSTL for use in the performance of maintenance. The lists also includes parts which must be removed for replacement of authorized parts. Parts lists are composed of functional groups in ascending alphanumeric sequence, with the parts in each group listed in ascending figure and item number sequence. Bulk materials are listed by item name in FIG. BULK at the end of the section. Repair parts kits are listed separately in their own functional group within Section II. Repair parts for repairable special tools are also listed in this section.

b. Section III. Special Tools List. A list of special tools, special TMDE, and other special support equipment authorized by this RPSTL (as indicated by Basis of Issue (BOI) information in DESCRIPTION AND USABLE ON CODE column) for the performance of maintenance.

c. Section IV. Cross-Reference Index. A list, in National Item Identification Number (NIIN) sequence, of all National stock numbered items appearing in the listings, followed by a list in alphanumeric sequence of all part numbers appearing in the listings. National stock numbers and part numbers are cross-referenced to each illustration figure and item number appearance. The figure and item number index lists figure and item numbers in alphanumeric sequence and cross-references NSN, CAGEC and part numbers.

## Section II. REPAIR PARTS LIST

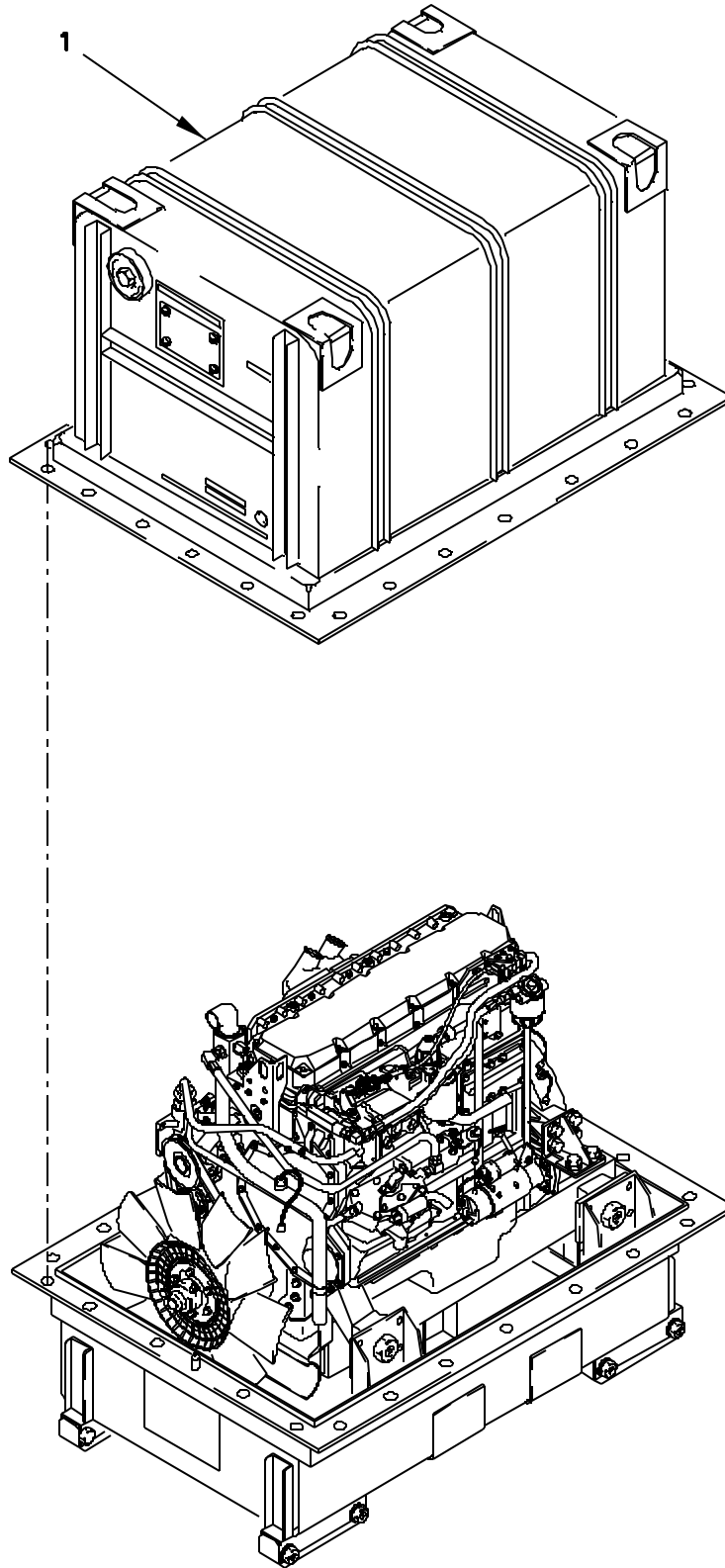


FIGURE 1. DRESSED ENGINE WITH CONTAINER



SECTION II

TM 9-2320-366-24P-1

(1) ITEM NO	(2) SMR CODE	(3) FSCM	(4) PART NUMBER	(5) DESCRIPTION AND USABLE ON CODE (UOC)	(6) QTY
-------------------	--------------------	-------------	-----------------------	--	------------

GROUP 0100: ENGINE ASSEMBLY  
 FIG.1 DRESSED ENGINE WITH CONTAINER

1	PAFHH	0FW39	12414398-004	ENGINE,DIESEL.....	1
---	-------	-------	--------------	--------------------	---

END OF FIGURE

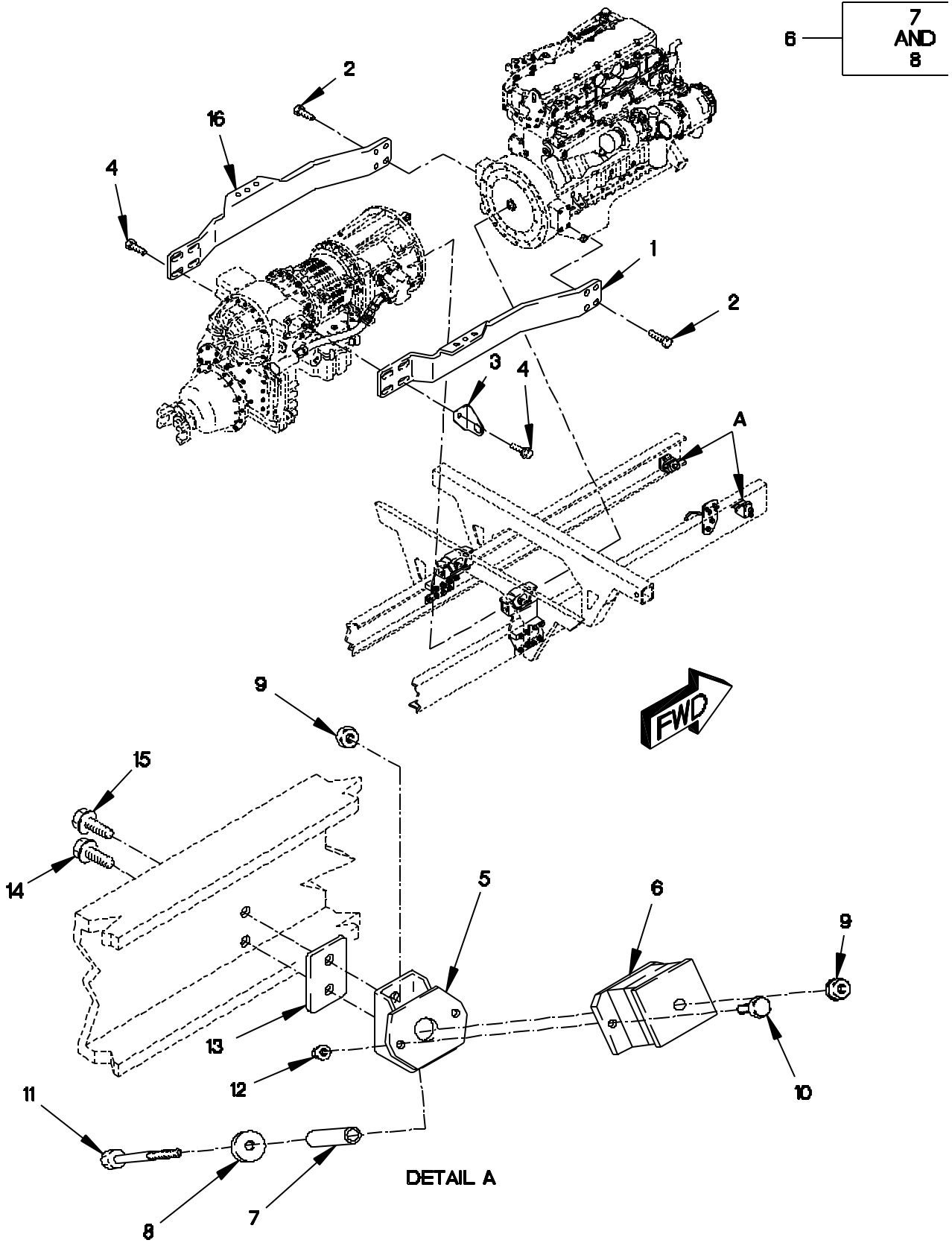


FIGURE 2. ENGINE MOUNTS

## SECTION II

TM 9-2320-366-24P-1

(1) ITEM NO	(2) SMR CODE	(3) FSCM	(4) PART NUMBER	(5) DESCRIPTION AND USABLE ON CODE (UOC)	(6) QTY
GROUP 0100: ENGINE ASSEMBLY FIG.2 ENGINE MOUNTS					
1	PAFZZ	19207	12414289-001	BRACKET,ENGINE MOUN.....	1
2	PAFZZ	19207	12414566-001	SCREW,CAP,HEXAGON H M14 X 2 X 35...	8
3	PAFZZ	0FW39	12420840-001	BRACKET,ANGLE.....	1
4	PAFZZ	19207	12414307-194	SCREW,CAP,HEXAGON H M20 X 2.5 X 60.	8
5	PAFZZ	19207	12414285	BRACKET,ENGINE MOUN.....	2
6	PAFZZ	81860	26112	MOUNT,RESILIENT.....	2
7	PAFZZ	19207	12419221	.SPACER,SLEEVE.....	2
8	PAFZZ	19207	12419222	.WASHER,FLAT 1/2.....	2
9	PAFZZ	19207	12414308-021	NUT,SELF-LOCKING,EX M12 X 1.5.....	6
10	PAFZZ	19207	12414307-037	BOLT,MACHINE M8 X 1.25 X 25.....	4
11	PAFZZ	19207	12414307-087	BOLT,MACHINE M12 X 1.5 X 90.....	2
12	PAFZZ	19207	12414308-018	NUT,SELF-LOCKING,EX M8 X 1.25.....	4
13	PAFZZ	19207	12414665	SPACER,PLATE.....	2
14	PAFZZ	19207	12414307-078	BOLT,MACHINE M12 X 1.5 X 35.....	3
15	PAFZZ	19207	12414307-079	BOLT,MACHINE M12 X 1.5 X 40.....	1
16	PAFZZ	19207	12414290-001	BRACKET,ENGINE MOUN.....	1

END OF FIGURE

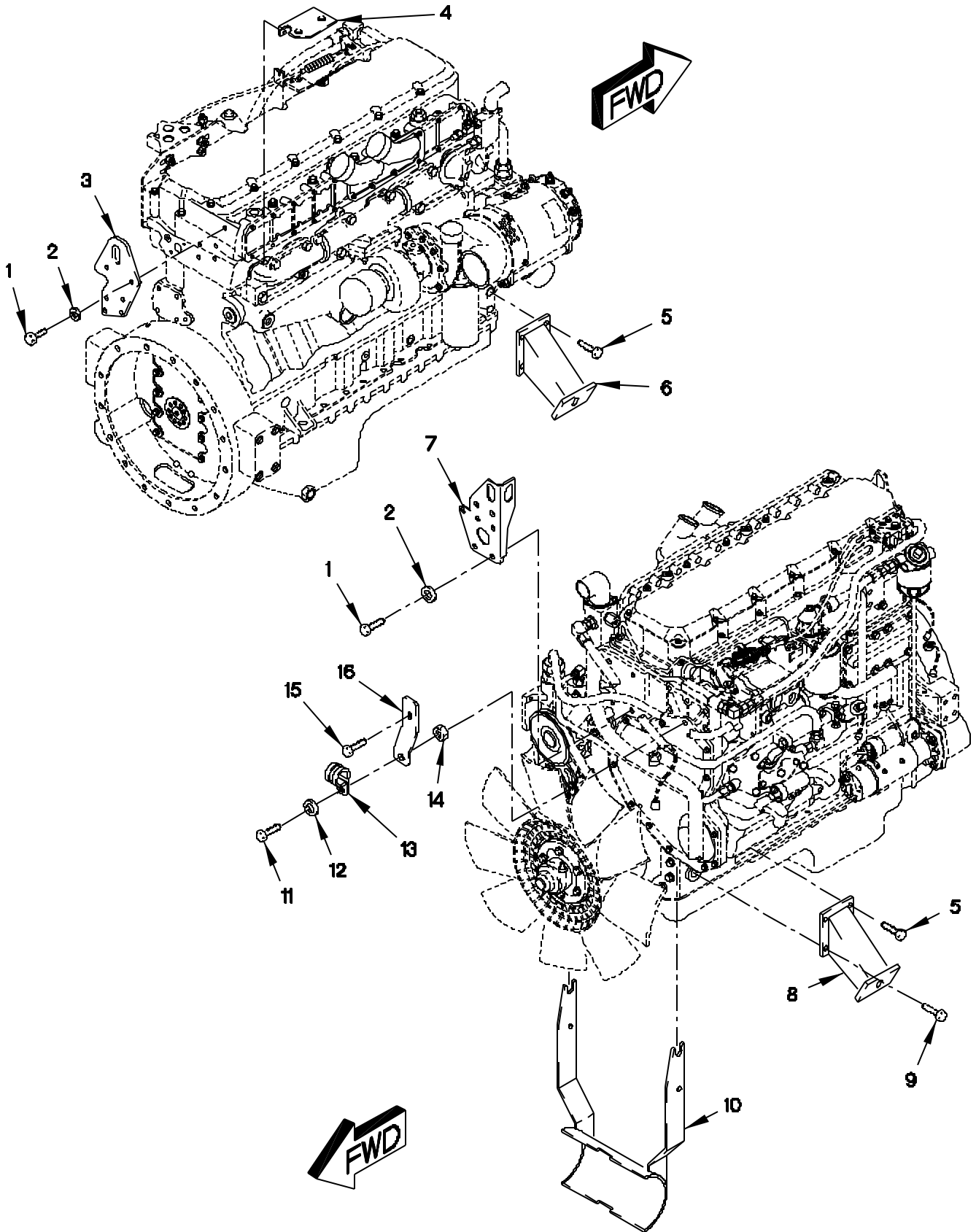


FIGURE 3. ENGINE BRACKETS

## SECTION II

TM 9-2320-366-24P-1

(1) ITEM NO	(2) SMR CODE	(3) FSCM	(4) PART NUMBER	(5) DESCRIPTION AND USABLE ON CODE (UOC)	(6) QTY
GROUP 0100: ENGINE ASSEMBLY FIG.3 ENGINE BRACKETS					
1	PAOZZ	11083	8T4136	BOLT,MACHINE M10 X 1.5 X 25.....	9
2	PAOZZ	11083	8T4121	WASHER,FLAT M11.....	9
3	PAOZZ	11083	4R9234	PLATE,MOUNTING.....	1
4	PAOZZ	19207	12421149	BRACKET,ANGLE.....	1
5	PAOZZ	19207	12414566-002	SCREW,CAP,HEXAGON H M14 X 2 X 40...	6
6	PAOZZ	19207	12414287	BRACKET,ENGINE MOUN.....	1
7	PAOZZ	11083	4R9233	BRACKET,ANGLE.....	1
8	PAOZZ	19207	12414286	BRACKET,VEHICULAR C.....	1
9	PAOZZ	19207	12414566-001	SCREW,CAP,HEXAGON H M14 X 2 X 35...	2
10	PAOZZ	0FW39	12414432	BRACKET,MOUNTING.....	1
11	PAOZZ	64678	000933 006058	SCREW,CAP,HEXAGON H M6 X 1 X 25....	1
12	PAOZZ	19200	12524631-1	WASHER,FLAT M6.....	1
13	PAOZZ	96906	MS21333-107	CLAMP,LOOP 1 IN.....	1
14	PAOZZ	15526	DIN 934 ST M6	NUT,PLAIN,HEXAGON M6 X 1.....	1
15	PAOZZ	15526	DIN933-M10X20-8. 8-A4C	BOLT,MACHINE M10 X 1.5 X 20.....	1
16	PAOZZ	19207	12414401	BRACKET,ENGINE MOUN.....	1

END OF FIGURE

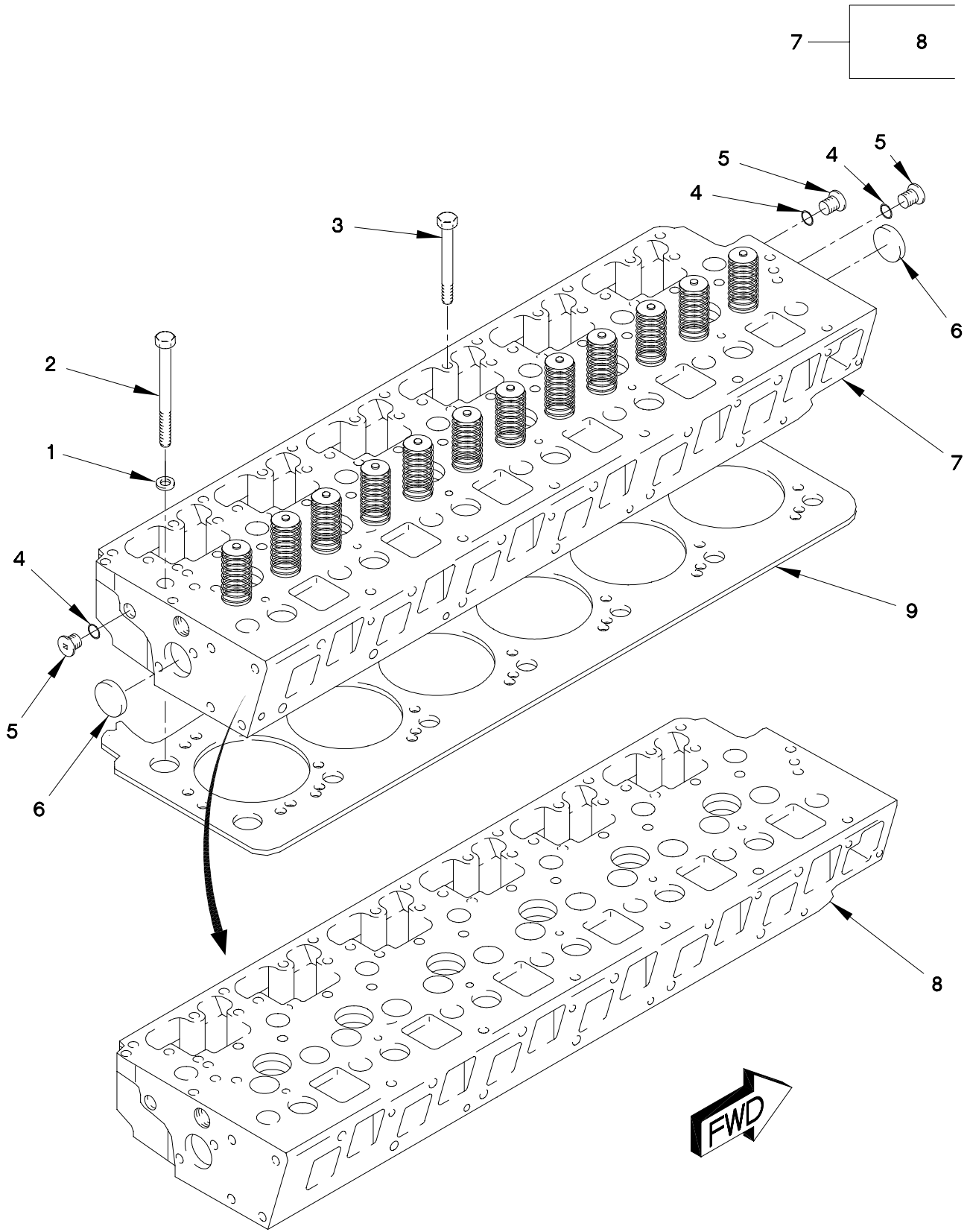


FIGURE 4. CYLINDER HEAD WITH VALVES AND GASKET

## SECTION II

TM 9-2320-366-24P-1

(1) ITEM NO	(2) SMR CODE	(3) FSCM	(4) PART NUMBER	(5) DESCRIPTION AND USABLE ON CODE (UOC)	(6) QTY
GROUP 0101: CRANKCASE, BLOCK, CYLINDER HEAD FIG.4 CYLINDER HEAD WITH VALVES AND GASKET					
1	PAFZZ	11083	8T3282	SPACER,RING.....	14
2	PAFZZ	11083	8T0657	SCREW,CAP,HEXAGON H M20 X 2.5 X 160.....	14
3	PAFZZ	11083	8T5030	SCREW,CAP,HEXAGON H M10 X 1.5 X 120.....	6
4	PAFZZ	11083	1J9671	PACKING,PREFORMED PART OF KIT P/N 9X8318 .....	3
5	PAFZZ	11083	9S8003	PLUG,MACHINE THREAD.....	3
6	PAFZZ	11083	2M6471	PLUG,EXPANSION.....	2
7	AHHHH	11083	115-4165	CYLINDER HEAD,DIESE.....	1
8	PAHHH	11083	115-4107	.CYLINDER HEAD,DIESE (WITH GUIDES,INSERTS AND SLEEVES).....	1
9	PAFZZ	11083	4P6930	GASKET PART OF KIT P/N 9X8318 .....	1

END OF FIGURE

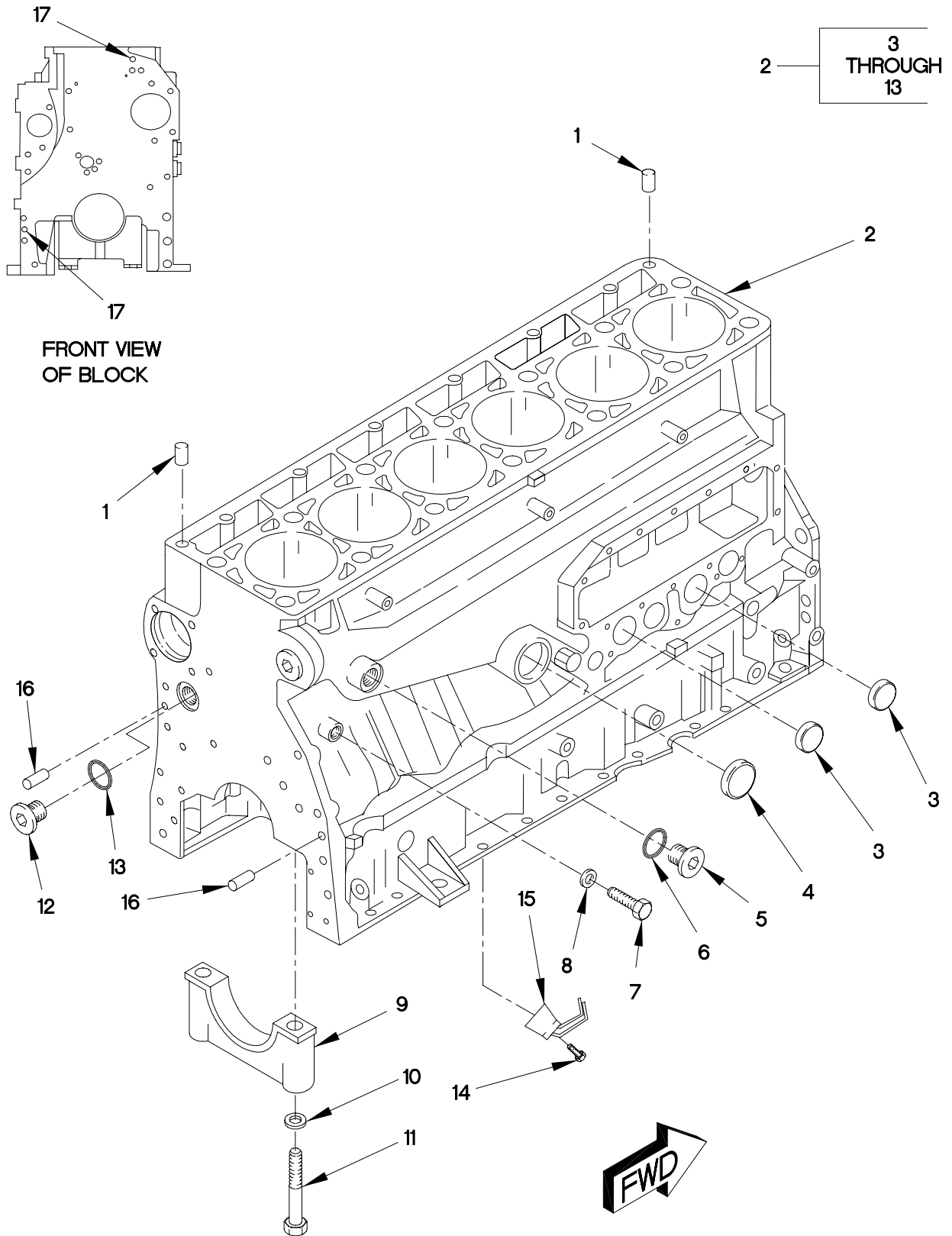


FIGURE 5. CYLINDER BLOCK



## SECTION II

TM 9-2320-366-24P-1

(1) ITEM NO	(2) SMR CODE	(3) FSCM	(4) PART NUMBER	(5) DESCRIPTION AND USABLE ON CODE (UOC)	(6) QTY
GROUP 0101: CRANKCASE, BLOCK, CYLINDER HEAD FIG.5 CYLINDER BLOCK					
1	PAHZZ	11083	1W8407	BUSHING,SLEEVE.....	2
2	PAHZZ	11083	129-1095	ENGINE BLOCK,DIESEL.....	1
3	PAFZZ	11083	2M6471	.PLUG,EXPANSION.....	2
4	PAFZZ	11083	3H5552	.PLUG.....	1
5	PAFZZ	11083	9S8008	.PLUG.....	2
6	PAFZZ	11083	3D2824	.O-RING PART OF KIT P/N 7X2521, 7X2524, 7X2528, 9X8318.....	2
7	PAFZZ	11083	8T0293	.BOLT,MACHINE M12 X 1.75 X 20.....	2
8	PAFZZ	11083	6F7062	.WASHER,FLAT PART OF KIT P/N 7X2521.....	2
9	XAHZZ	11083	7E2968	.CAP,PILLOW BLOCK.....	7
10	PAHZZ	11083	5P8247	.WASHER,FLAT M17.....	14
11	PAHZZ	11083	9X8916	.BOLT,MACHINE M16 X 2 X 140.....	14
12	PAHZZ	11083	9S8006	.PLUG.....	1
13	PAHZZ	11083	2M9780	.PACKING,PREFORMED.....	1
14	PAHZZ	11083	6V3940	SCREW,CAP,HEXAGON H M8 X 1.25 X 25.	6
15	PAFZZ	11083	4P5651	TUBE ASSEMBLY,METAL.....	6
16	PAHZZ	11083	7N5683	PIN,STRAIGHT,HEADLE.....	2
17	PAHZZ	11083	6V3538	PIN,STRAIGHT,HEADLE.....	2

END OF FIGURE