

ARMY TM 9-2320-366-24P-2
AIR FORCE T.O. 36112-1C-1156-2

*supersedes copy dated Sept 1998

UNIT, DIRECT SUPPORT, AND
GENERAL SUPPORT MAINTENANCE
REPAIR PARTS AND SPECIAL TOOLS LIST
FOR
M1083 SERIES, 5-TON, 6X6,
MEDIUM TACTICAL VEHICLE (MTV)
VOLUME NO. 2 OF 2

MODEL	NSN	EIC
TRK, CAR., MTV, M1083 W/WN W/O WN	2320-01-360-1895 2320-01-354-3386	BT2 BR2
TRK, CAR., MTV, W/MATL HDLG (MHE), M1084	2320-01-354-3387	BR3
TRK, CAR., MTV, LWB, M1085 W/WN W/O WN	2320-01-360-1897 2320-01-354-4530	BT5 BR7
TRK, CAR., MTV, LWB, W/MATL HDLG EQPT (MHE), M1086	2320-01-354-4531	BR8
TRK, TRACTOR., MTV, M1088 W/WN W/O WN	2320-01-360-1892 2320-01-355-4332	BTY BTJ
TRK, WKR., MTV, M1089	2320-01-354-4528	BR4
TRK, DUMP, MTV, M1090 W/WN W/O WN	2320-01-360-1893 2320-01-354-4529	BTZ BR5
TRK, CHAS, MTV, M1092	2320-01-354-3382	BRZ
TRK, CAR., MTV, AIRDROP, M1093 W/WN W/O WN	2320-01-360-1896 2320-01-355-3063	BT4 BR9
TRK, DUMP, MTV, AIRDROP, M1094 W/WN W/O WN	2320-01-360-1984 2320-01-355-3062	BT2 BTK
TRK, CHAS, MTV, LWB, M1096	2320-01-354-4527	BR6

DISTRIBUTION STATEMENT A. Approved for public release; distribution is unlimited.

HEADQUARTERS, DEPARTMENTS OF THE ARMY AND THE AIR FORCE

31 July 2001

TECHNICAL MANUAL
NO. 9-2320-366-24P-2

HEADQUARTERS
DEPARTMENTS OF THE ARMY
AND THE AIR FORCE
Washington, D.C. 31 July 2001

TECHNICAL ORDER
NO.

UNIT, DIRECT SUPPORT, AND
GENERAL SUPPORT MAINTENANCE
REPAIR PARTS AND SPECIAL TOOLS LIST
FOR

**M1083 SERIES, 5-TON, 6X6
MEDIUM TACTICAL VEHICLE (MTV)**

MODEL	NSN	EIC
TRK, CAR., MTV, M1083 W/WN W/O WN	2320-01-360-1895 2320-01-354-3386	BT2 BR2
TRK, CAR., MTV, W/MATL HDLG (MHE), M1084	2320-01-354-3387	BR3
TRK, CAR., MTV, LWB, M1085 W/WN W/O WN	2320-01-360-1897 2320-01-354-4530	BT5 BR7
TRK, CAR., MTV, LWB, W/MATL HDLG EQPT (MHE), M1086	2320-01-354-4531	BR8
TRK, TRACTOR., MTV, M1088 W/WN W/O WN	2320-01-360-1892 2320-01-355-4332	BTY BTJ
TRK, WKR., MTV, M1089	2320-01-354-4528	BR4
TRK, DUMP, MTV, M1090 W/WN W/O WN	2320-01-360-1893 2320-01-354-4529	BTZ BR5
TRK, CHAS, MTV, M1092	2320-01-354-3382	BRZ
TRK, CAR., MTV, AIRDROP, M1093 W/WN W/O WN	2320-01-1896 2320-01-355-3063	BT4 BR9
TRK, DUMP, MTV, AIRDROP, M1094 W/WN W/O WN	2320-01-360-1984 2320-01-355-3062	BT2 BTK
TRK, CHAS, MTV, LWB, M1096	2320-01-354-4527	BR6

REPORTING ERRORS AND RECOMMENDING IMPROVEMENTS

You can help improve this manual. If you find any mistakes or if you know a way to improve the procedures, please let us know. Submit your DA Form 2028 (Recommended Changes to Equipment Technical Publications), through the Internet, on the Army Electronic Product Support (AEPS) website. The Internet address is <http://aeprs.ria.army.mil>. If you need a password, scroll down and click on "ACCES REQUEST FORM". The DA Form 2028 is located in the ONLINE FORMS PROCESSING section of the AEPS. Fill out the form and click on SUBMILT. Using this form on the AEPS will enable us to respond quicker to your comments and better manage the DA Form 2028 program. You may also mail, fax or Email your letter or DA Form 2028 direct to: AMSTA-LC-CI/TECH PUBS, TACOM-RI, 1 Rock Island Arsenal, Rock Island, IL 61299-7630. The email address is TACOM-TECH-PUBS@RIA.ARMY.MIL. The fax number is DSN 793-0726 or Commercial (309) 782-0726.

DISTRIBUTION STATEMENT A. Approved for public release; distribution is unlimited.
This publication supercedes TM 9-2320-366-24P-2 dated 15 Sept 1998.

TABLE OF CONTENTS

	Page	Illus./ Figure
VOLUME II		
Group 22	Body Chassis and Accessories	
	2202 M1090 and M1094 Body Cover	419-1 419
	2202 Windshield Washer Reservoir	420-1 420
	2202 Windshield Wiper and Motor	421-1 421
	2202 Cab Mirrors	422-1 422
	2202 Front Reflectors	423-1 423
	2202 Rear Reflectors	424-1 424
	2207 Personnel Heater Assembly	425-1 425
	2210 M1084 and M1086 Decals and Data Plates	426-1 426
	2210 Data and Identification Plates	427-1 427
	2210 M1089 Decals and Data Plates	428-1 428
	2210 M1090 Data and Identification Plates	429-1 429
Group 24	Hydraulic and Fluid Systems	
	2401 Air/Hydraulic Power Unit, Hoses and Fittings	430-1 430
	2401 Back-up Hydraulic Pump, Hoses and Fittings	431-1 431
	2402 Four Way Relief Valve	432-1 432
	2402 Hydraulic Manifold, Hoses and Fittings	433-1 433
	2402 Hydraulic Manifold Assembly	434-1 434
	2402 Hydraulic Manifold Assembly	435-1 435
	2404 Spare Tire Retainer Lift Cylinder, Hoses and Fittings	436-1 436
	2404 Cab Hydraulic Cylinder, Hoses and Fittings	437-1 437
	2404 M1090 and M1094 Dump Body Lift Cylinder	438-1 438
	2406 M1083, M1085, M1089 and M1093 Hydraulic Rotary Pump, Winch Control Valve, Hoses and Fittings	439-1 439
	2406 Winch Control Valve Assembly	440-1 440
	2406 2001 M1084 and M1086 Hydraulic Rotary Pump, Hoses and Fittings.....	441-1 441
	2406 2001 M1090 and M1094 Hydraulic Rotary Pump, Hoses and Fittings.....	442-1 442
	2406 2001 M1090 and M1094 Hydraulic Rotary Pump, Winch Control Valve, Hoses and Fittings	443-1 433
	2406 M1089 External Hydraulic Power Ports	444-1 444
	2407 Suspension Cylinder, Hoses and Fittings	445-1 445
	2408 Hydraulic Reservoir and Filter	446-1 446
Group 33	Special Purpose Kits	
	3301 Engine Container	447-1 447
	3301 Transmission Container	448-1 448
	3303 Options Panel Kit	449-1 449
	3307 Amber Warning Light	450-1 450
	3307 Flywheel Housing Vent Kit	451-1 451
	3307 M1083 and M1093 Troopseat Kit	452-1 452
	3307 M1085 Troopseat Kit	453-1 453
	3307 M1090 and M1094 Troopseat Kit	454-1 454
	3307 M1083 and M1093 Soft Top Cover Kit	455-1 455

	Page	Illus./ Figure
Group 33	Special Purpose Kits (continued)	
	3307 M1090 and M1094 Soft Top Cover Kit.....	456-1 456
	3307 M1085 Soft Top Cover Kit	457-1 457
	3307 200A Polarity Protection Device, Terminal Block, Cable and Brackets	458-1 458
	3307 200 AMP Alternator and Regulator	459-1 459
	3307 Reserve Fuel and Water Bottle Brackets	460-1 460
	3307 Light Material Handling Crane Kit.....	461-1 461
	3307 Light Material Handling Crane Winch Assembly	462-1 462
	3307 Light Material Handling Crane Hoist Assembly.....	463-1 463
	3307 Light Material Handling Crane Mast and Swing Assembly	464-1 464
	3307 Light Material Handling Crane Handle Assembly	465-1 465
	3307 Light Material Handling Crane Boom Assembly.....	466-1 466
	3307 Light Material Handling Crane Cable Extension	467-1 467
	3307 Light Material Handling Crane Plug and Circuit Breaker	468-1 468
	3307 Shelter Tiedown Kit	469-1 469
	3307 M1085 Shelter Tiedown Kit.....	470-1 470
	3307 M1083, M1085 and M1093 Collapsible Drums Tiedown Kit.....	471-1 471
	3307 Tank and Pump Unit Tiedown Kit	472-1 472
	3307 Pintle Hook Extension Kit.....	473-1 473
	3307 S-280 Shelter Ladder Adapter Kit	474-1 474
	3307 Crane Adapter Kit.....	475-1 475
Group 34	Armament, Sighting and Fire Control Material	
	3401 Machine Gun Mounting Kit	476-1 476
	3402 Small Arms Mount.....	477-1 477
Group 39	Searchlight and Electrical Illuminating Equipment	
	3901 M1089 Amber Warning Light.....	478-1 478
	3903 Amber Light Mast Assembly	479-1 479
Group 43	Gas, Air and Vacuum Systems	
	4316 M1090 and M1094 Tailgate Pneumatic Solenoid Valve, Manual Override Valve, Hoses and Fittings.....	480-1 480
	4318 M1090 and M1094 Tailgate Pneumatic Cylinder	481-1 481
	4321 Air Dryer, Hoses and Fittings	482-1 482
	4321 Wet Air Tank, Clamps, Hoses and Fittings	483-1 483
Group 47	Measuring Gages	
	4702 Air Filter Warning Indicator	484-1 484
Group 94	Repair Kits	
	9401 Repair Kits.....	Kits-1
Group 95	Hardware Supplies and Bulk Material	
	9501 Bulk Items	Bulk-1
Section III. SPECIAL TOOLS LISTS		
Group 26	Tools and Test Equipment	
	2604 Unit Maintenance Special Tools.....	485-1 485
	2604 Direct Support Maintenance Special Tools	486-1 486
	2604 General Support Maintenance Special Tools.....	487-1 487
Section IV. CROSS REFERENCE INDEX		
	Part Number Index	I-1
	National Stock Number Index.....	I-227
	Figure and Item Number Index	I-329

UNIT, DIRECT SUPPORT, AND GENERAL SUPPORT MAINTENANCE REPAIR PARTS AND SPECIAL TOOLS LIST

SECTION I. INTRODUCTION

1.Scope.

This RPSTL lists and authorizes spares and repair parts; special tools; special test, measurement, diagnostic equipment (TMDE); and other special support equipment required for performance of unit, direct support, and general support maintenance of the M1078 Series LMTV. It authorizes the requisitioning, issue, and disposition of spares, repair parts and special tools as indicated by the source, maintenance and recoverability (SMR) codes.

2.General.

In addition to Section I, Introduction, this Repair Parts and Special Tools List is divided into the following sections:

a.Section II. Repair Parts List. A list of spares and repair parts authorized by this RPSTL for use in the performance of maintenance. The lists also includes parts which must be removed for replacement of authorized parts. Parts lists are composed of functional groups in ascending alphanumeric sequence, with the parts in each group listed in ascending figure and item number sequence. Bulk materials are listed by item name in FIG. BULK at the end of the section. Repair parts kits are listed separately in their own functional group within Section II. Repair parts for repairable special tools are also listed in this section.

b.Section III. Special Tools List. A list of special tools, special TDME, and other special support equipment authorized by this RPSTL (as indicated by Basis of Issue (BOI) information in DESCRIPTION AND USABLE ON CODE column) for the performance of maintenance.

c.Section IV. Cross-Reference Index. A list, in National Item Identification Number (NIIN) sequence, of all National stock numbered items appearing in the listings, followed by a list in alphanumeric sequence of all part numbers appearing in the listings. National stock numbers and part numbers are cross-referenced to each illustration figure and item number appearance. The figure and item number index lists figure and item numbers in alphanumeric sequence and cross-references NSN, CAGEC and part numbers.

Section II. REPAIR PARTS LIST

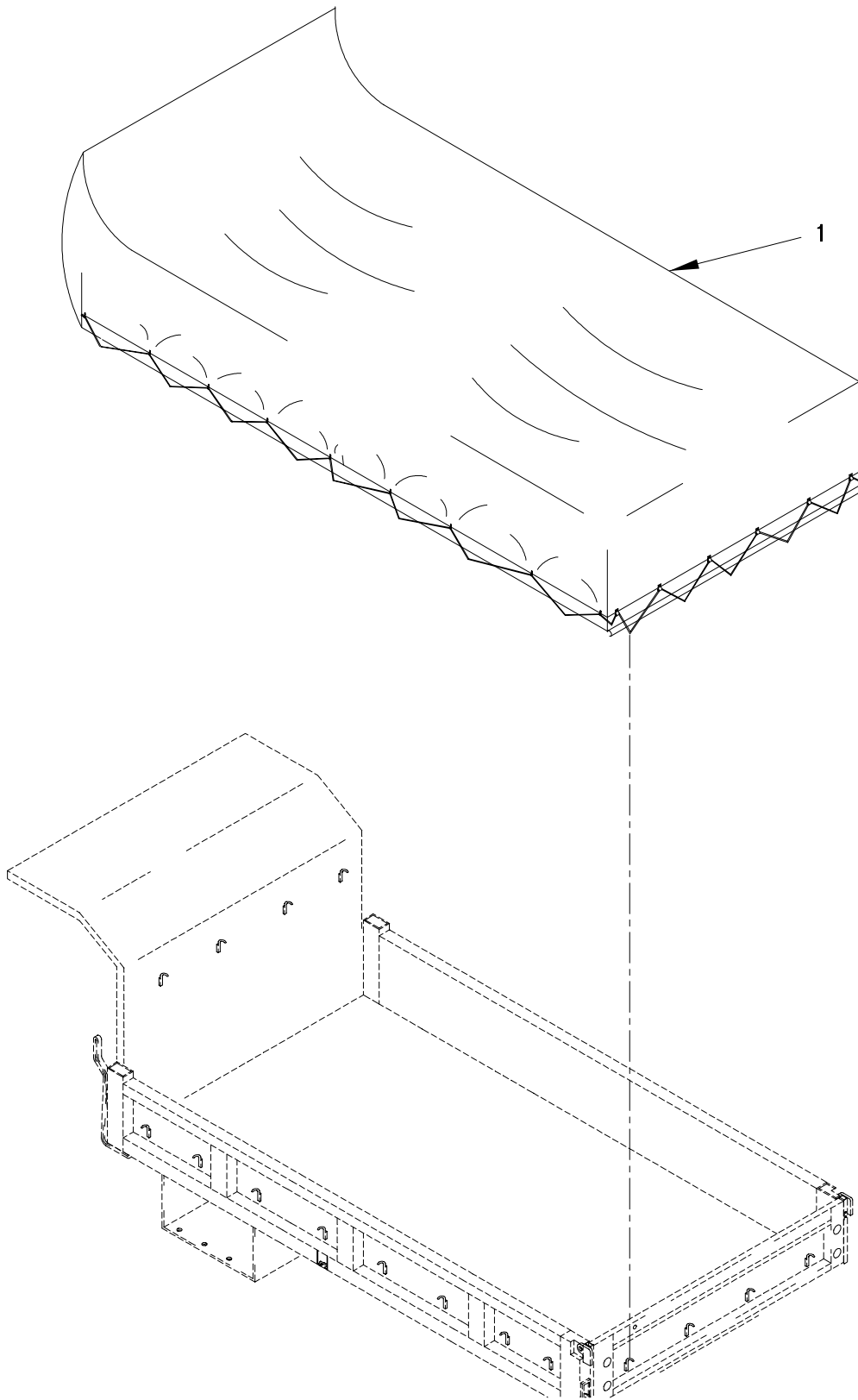


FIGURE 419. M1090 AND M1094 BODY COVER

SECTION II

TM 9-2320-366-24P-2

(1) ITEM NO	(2) SMR CODE	(3) FSCM	(4) PART NUMBER	(5) DESCRIPTION AND USABLE ON CODE (UOC)	(6) QTY
-------------------	--------------------	-------------	-----------------------	--	------------

GROUP 2201: CANVAS, RUBBER, OR
PLASTIC ITEMS
FIG.419 M1090 AND M1094 BODY COVER

1	PAOZZ	19207	12415785	COVER,VEHICULAR COM..... UOC:MAH,MAJ,MWH,MWJ,	1
---	-------	-------	----------	--	---

END OF FIGURE

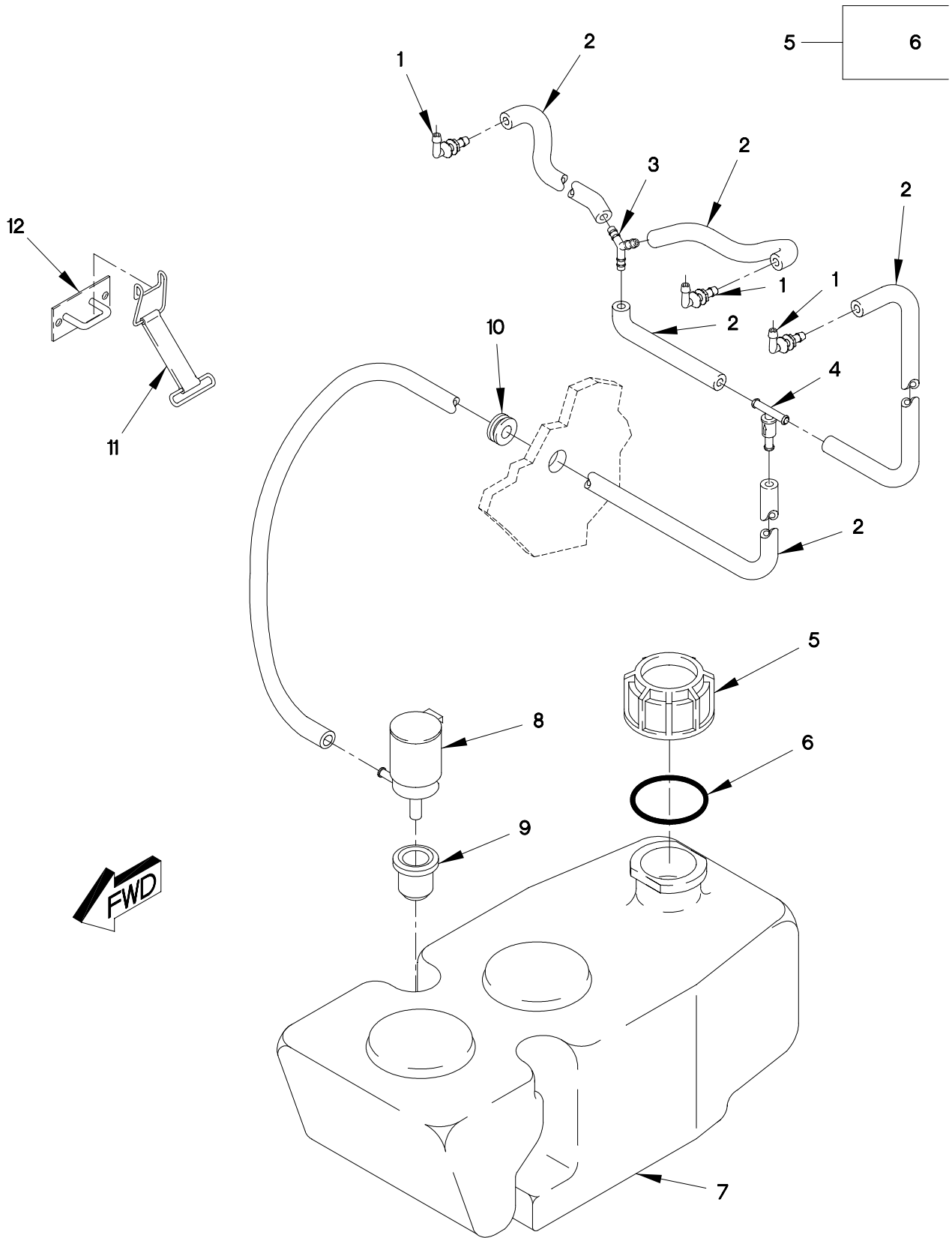


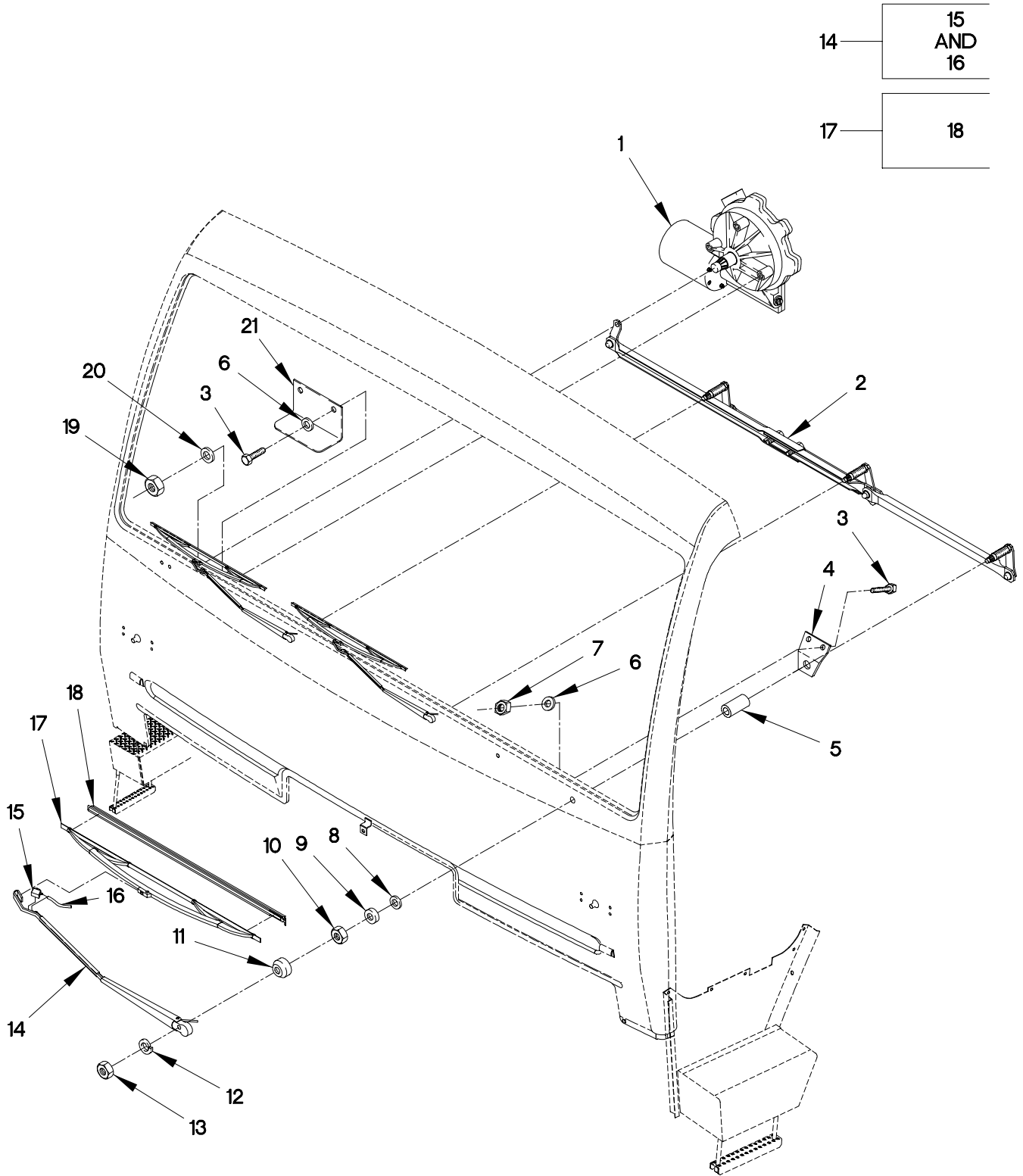
FIGURE 420. WINDSHIELD WASHER RESEVOIR

SECTION II

TM 9-2320-366-24P-2

(1) ITEM NO	(2) SMR CODE	(3) FSCM	(4) PART NUMBER	(5) DESCRIPTION AND USABLE ON CODE (UOC)	(6) QTY
GROUP 2202: ACCESSORY ITEMS FIG.420 WINDSHIELD WASHER RESEVOIR					
1	PAOZZ	82484	192.518	ELBOW,HOSE.....	2
				UOC:MAC,MAJ,MWC,MWJ,	
1	PAOZZ	82484	192.518	ELBOW,HOSE.....	3
				UOC:MAA,MAB,MAE,MAF,MAG,MAH,MAK,MAL, MAM,MWB,MWF,MWH,MWL,	
2	PAOZZ	82484	W-22-105	TUBING,NONMETALLIC.....	V
3	PAOZZ	0FW39	12417565	WYE,TRUE,PIPE.....	1
				UOC:MAA,MAB,MAE,MAF,MAG,MAH,MAK,MAL, MAM,MWB,MWF,MWH,MWL,	
4	PAOZZ	82484	104.385	VALVE,CHECK.....	1
5	PAOZZ	0FW39	12422560	CAP,FILLER OPENING.....	1
6	PAOZZ	96906	MS28775-326	.O-RING.....	1
7	PAOZZ	0FW39	12417490	RESERVOIR, WINDSHIE.....	1
8	PAOZZ	0FW39	12417785	PUMP,WINDSHIELD WAS.....	1
9	PAOZZ	19207	12417598	GROMMET,NONMETALLIC.....	1
10	PAOZZ	96906	MS35489-6	GROMMET,NONMETALLIC.....	1
11	PAOZZ	0FW39	12417525	STRAP,ELASTIC.....	1
12	PAOZZ	0FW39	12419113	BRACKET,MOUNTING.....	1

END OF FIGURE



14	15 AND 16
17	18

FIGURE 421. WINDSHIELD WIPER AND MOTOR

SECTION II

TM 9-2320-366-24P-2

(1) ITEM NO	(2) SMR CODE	(3) FSCM	(4) PART NUMBER	(5) DESCRIPTION AND USABLE ON CODE (UOC)	(6) QTY
GROUP 2202: ACCESSORY ITEMS FIG.421 WINDSHIELD WIPER AND MOTOR					
1	PAOZZ	82424	E-006-086	MOTOR,WINDSHIELD WI.....	1
2	PAOZZ	82484	GS-3909	ARM,WINDSHIELD WIPE.....	1
3	PAOZZ	15526	DIN933-M6X16-8.8 -A4C	SCREW,CAP,HEXAGON H M6 X 1 X 16....	9
4	PAOZZ	0FW39	12417747	BRACKET,VEHICULAR C.....	3
5	PAOZZ	0FW39	12417488	SPACER,SLEEVE.....	3
6	PAOZZ	19200	12524631-1	WASHER,FLAT M6.....	9
6	PAOZZ	19200	12524631-1	WASHER,FLAT M6..... UOC:MAC,MAJ,MWC,MWJ,	3
7	PAOZZ	15526	DIN 934 ST M6	NUT,PLAIN,HEXAGON M6 X 1.....	6
8	PAOZZ	82484	900.032	GASKET.....	3
9	PAOZZ	82484	910.075	WASHER,FLAT M16.5.....	3
10	PAOZZ	82484	908.718	NUT,PLAIN,HEXAGON M16 X 1.....	3
11	PAOZZ	0FW39	12417757	COLLAR,SHAFT.....	3
12	PAOZZ	19207	12414560-018	WASHER,LOCK M8..... UOC:MAA,MAB,MAE,MAF,MAG,MAH,MAK,MAL, MAM,MWB,MWC,MWF,MWH,MWJ,MWL,	3
12	PAOZZ	19207	12414560-018	WASHER,LOCK M8..... UOC:MAC,MAJ,MWC,MWJ,	2
13	PAOZZ	82484	907.108	NUT,PLAIN,HEXAGON M8 X 1.25..... UOC:MAA,MAB,MAE,MAF,MAG,MAH,MAK,MAL, MAM,MWB,MWF,MWH,MWL,	3
13	PAOZZ	82484	907.108	NUT,PLAIN,HEXAGON M8 X 1.25..... UOC:MAC,MAJ,MWC,MWJ,	2
14	PAOOO	82484	S-4706	ARM,WINDSHIELD WIPE..... UOC:MAA,MAB,MAE,MAF,MAG,MAH,MAK,MAL, MAM,MWB,MWF,MWH,MWL,	3
14	PAOOO	0FW39	12417860	ARM,WINDSHIELD WIPE..... UOC:MAC,MAJ,MWC,MWJ,	2
15	PAOZZ	82484	106.731	.NOZZLE,WINDSHIELD W.....	1
16	PAOZZ	82484	W-22-105	.TUBING,NONMETALLIC.....	V
17	PAOZZ	0FW39	12417656-001	BLADE,WINDSHIELD WI..... UOC:MAA,MAB,MAE,MAF,MAG,MAH,MAK,MAL, MAM,MWB,MWF,MWH,MWL,	3
17	PAOZZ	0FW39	12417656-001	BLADE,WINDSHIELD WI..... UOC:MAC,MAJ,MWC,MWJ,	2
18	PAOZZ	0FW39	TV980007	.WIPER,REFILL.....	1
19	PAOZZ	19207	12419003	NUT,PLAIN,EXTENDED.....	1
20	PAOZZ	34914	990 3861	WASHER,FLAT M8.4.....	1
21	PAOZZ	19207	12420333	BRACKET,ANGLE.....	1

END OF FIGURE

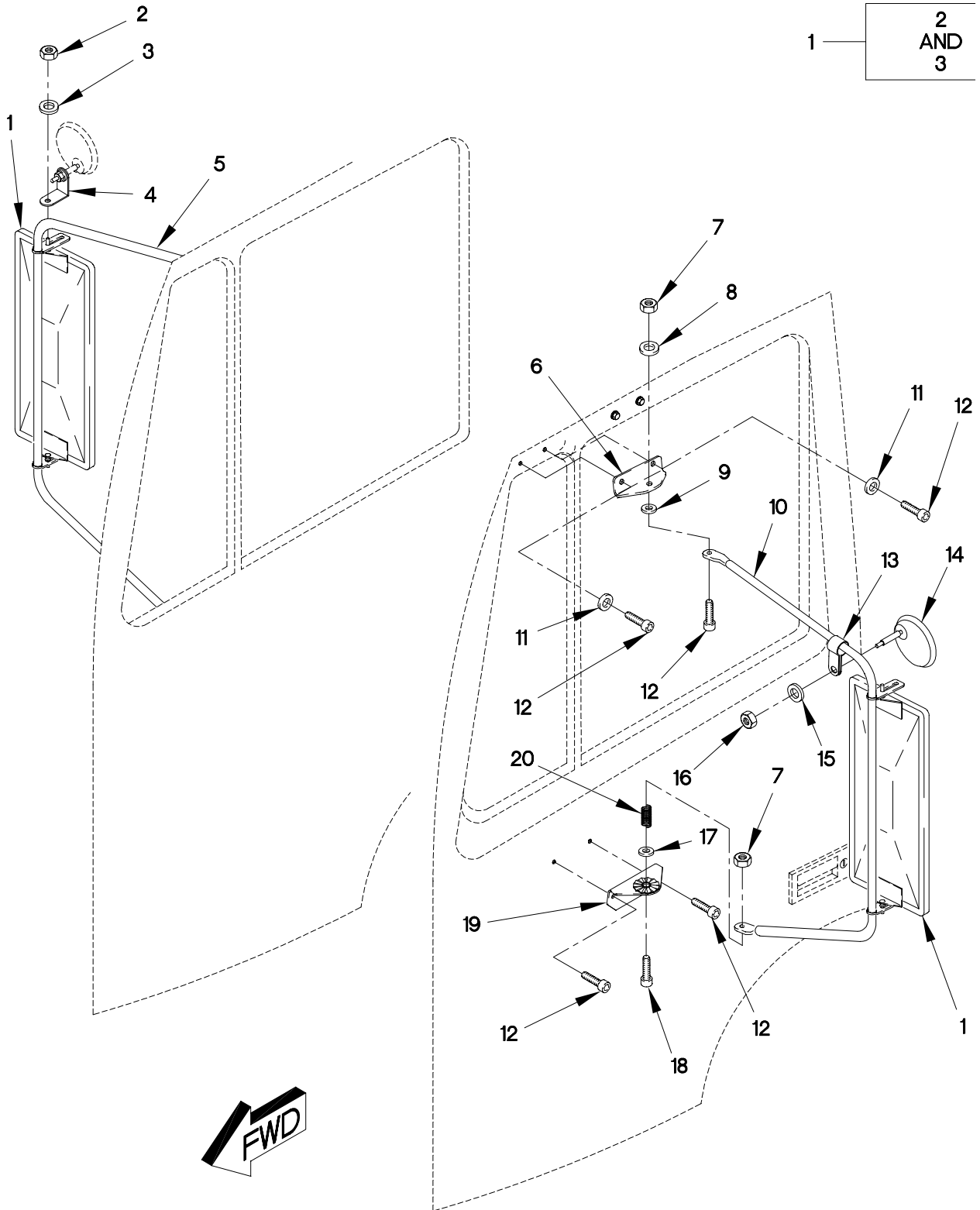


FIGURE 422. CAB MIRRORS

SECTION II

TM 9-2320-366-24P-2

(1) ITEM NO	(2) SMR CODE	(3) FSCM	(4) PART NUMBER	(5) DESCRIPTION AND USABLE ON CODE (UOC)	(6) QTY
GROUP 2202: ACCESSORY ITEMS FIG.422 CAB MIRRORS					
1	PAOZZ	58536	A52432-3-R	MIRROR ASSEMBLY,REA RIGHT.....	1
1	PAOZZ	58536	A52432-3-L	MIRROR ASSEMBLY,REA LEFT.....	1
2	PAOZZ	96906	MS21044-N4	.NUT,SELF-LOCKING,HE 1/4-28.....	4
3	PAOZZ	96906	MS27183-10	.WASHER,FLAT 9/32.....	4
4	PAOZZ	28116	15647184B	BRACKET,ANGLE MOUNT.....	2
5	PAOZZ	0FW39	12419942-011	BRACKET,MOUNTING RIGHT.....	1
				UOC:MAA,MAB,MAE,MAF,MAG,MAH,MAK,MAL, MAM,MWB,MWF,MWH,MWL,	
5	PAOZZ	0FW39	12420113-008	BRACKET,VEHICULAR C.....	1
				UOC:MAC,MAJ,MWC,MWJ,	
6	PAOZZ	0FW39	12419943-001	BRACKET,ANGLE.....	2
7	PAOZZ	19207	12414315-006	NUT,SELF-LOCKING,HE M8 X 1.25.....	4
8	PAOZZ	34914	990 3861	WASHER,FLAT M8.4.....	4
9	PAOZZ	19207	12419942-010	BRACKET,MOUNTING LEFT.....	1
				UOC:MAA,MAB,MAE,MAF,MAG,MAH,MAK,MAL, MAM,MWB,MWF,MWH,MWL,	
9	PAOZZ	19207	12420113-007	BRACKET,VEHICULAR C.....	1
				UOC:MAC,MAJ,MWC,MWJ,	
10	PAOZZ	19200	12524631-1	WASHER,FLAT M6.....	8
11	PAOZZ	19207	12414475-068	SCREW,CAP,SOCKET HE M6 X 1 X 16....	8
12	PAOZZ	28116	915920	BRACKET,ARM MOUNT.....	2
13	PAOZZ	28116	810505	MIRROR,CONVEX.....	2
14	PAOZZ	96906	MS27183-10	WASHER,FLAT.....	4
15	PAOZZ	96906	MS21044-N4	NUT,SELF-LOCKING,HE.....	2
16	PAOZZ	81495	071 408 32	BOLT,MACHINE M8 X 1.25 X 25.....	4
17	PAOZZ	19207	12421262	PLATE,MOUNTING.....	2
18	PAOZZ	0FW39	12419944-001	BRACKET,ANGLE.....	2

END OF FIGURE

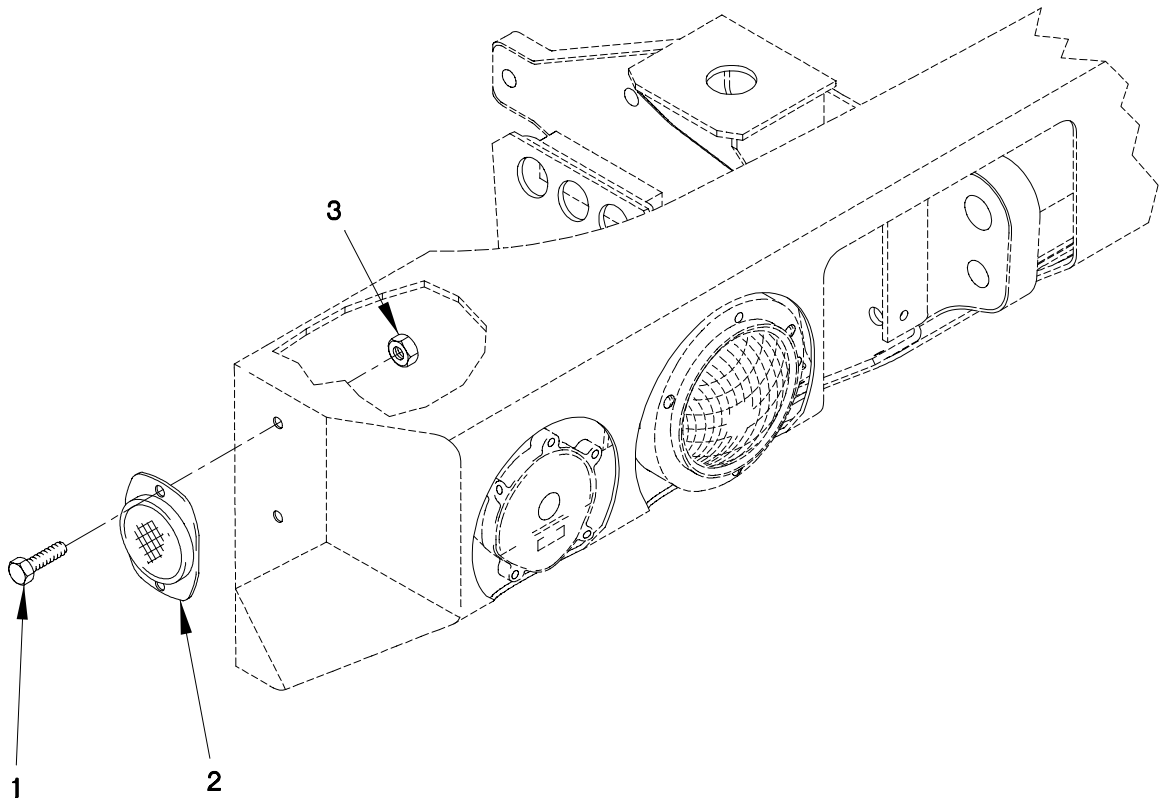


FIGURE 423. FRONT REFLECTORS

SECTION II

TM 9-2320-366-24P-2

(1) ITEM NO	(2) SMR CODE	(3) FSCM	(4) PART NUMBER	(5) DESCRIPTION AND USABLE ON CODE (UOC)	(6) QTY
-------------------	--------------------	-------------	-----------------------	--	------------

GROUP 2202: ACCESSORY ITEMS
FIG.423 FRONT REFLECTORS

1	PAOZZ	56161	10504502	SCREW,CAP,HEXAGON H M5 X .8 X 25...	4
2	PAOZZ	96906	MS35387-2	REFLECTOR,INDICATIN.....	2
3	PAOZZ	19207	12414315-003	NUT,PLAIN,HEXAGON M5 X .8.....	4

END OF FIGURE

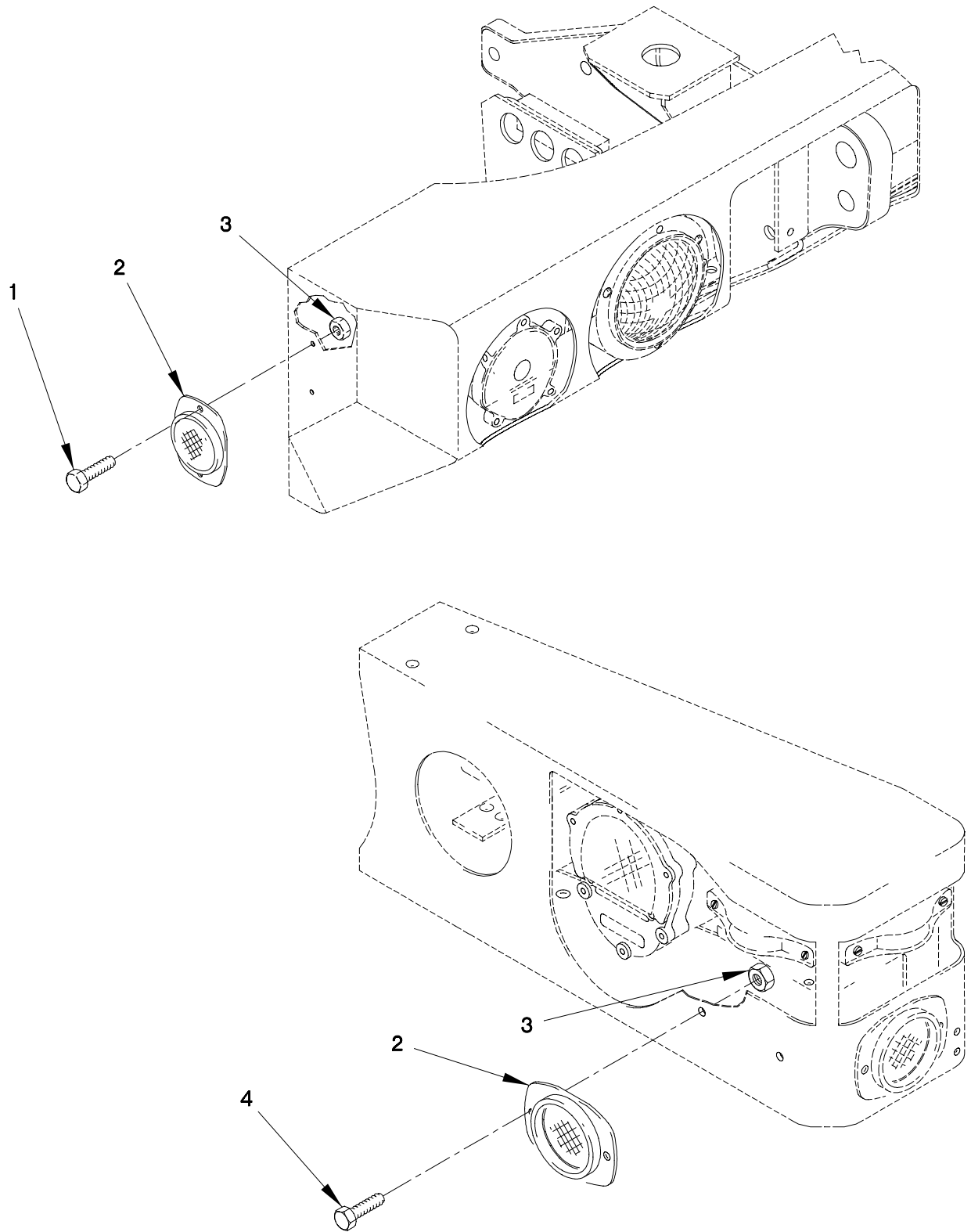


FIGURE 424. REAR REFLECTORS (SHEET 1 OF 2)

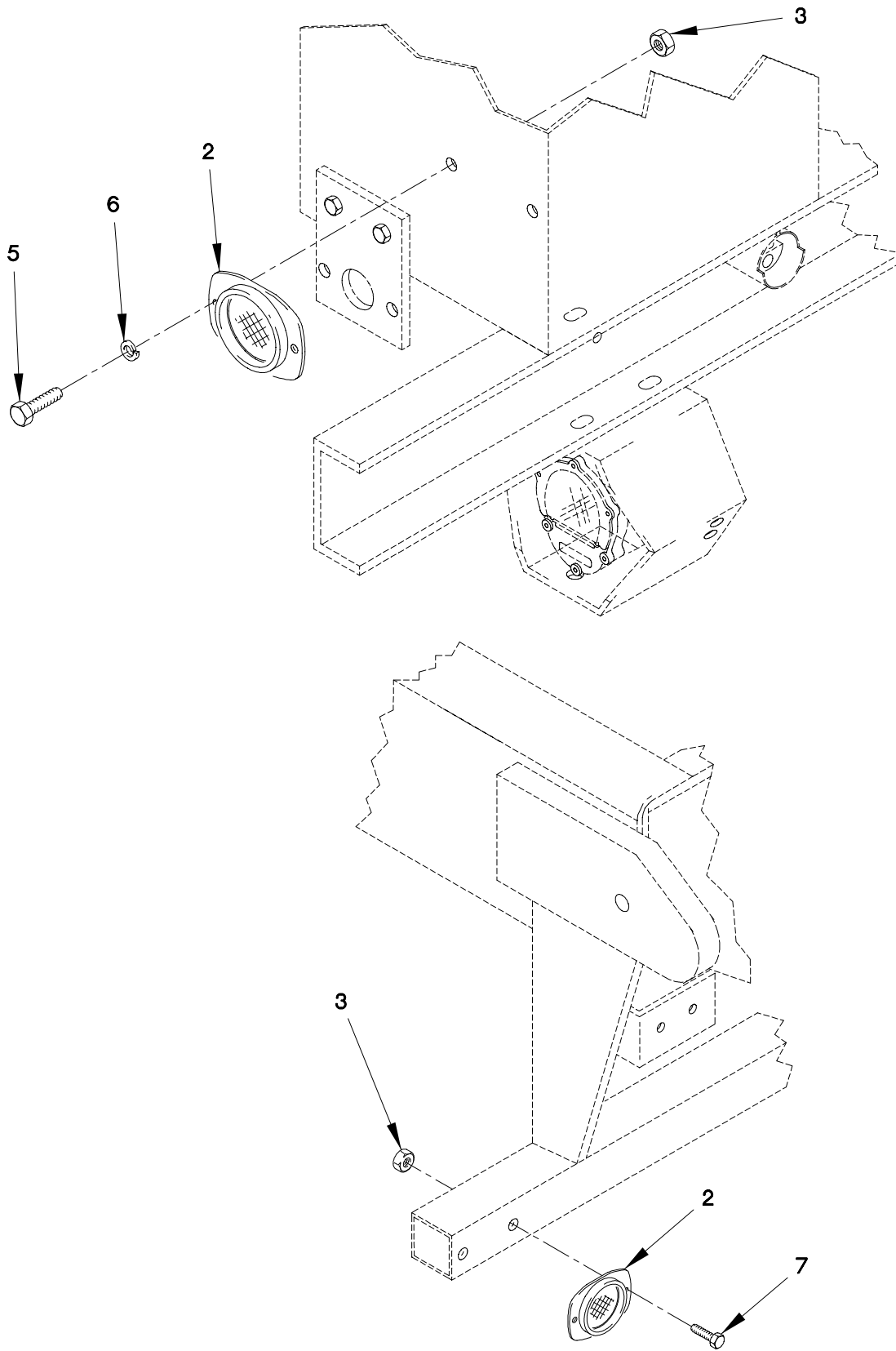


FIGURE 424. REAR REFLECTORS (SHEET 2 OF 2)

SECTION II

TM 9-2320-366-24P-2

(1) ITEM NO	(2) SMR CODE	(3) FSCM	(4) PART NUMBER	(5) DESCRIPTION AND USABLE ON CODE (UOC)	(6) QTY
GROUP 2202: ACCESSORY ITEMS FIG.424 REAR REFLECTORS					
1	PAOZZ	19207	12414419-058	SCREW,CAP,HEXAGON H M5 X .8 X 16... UOC:MAA,MAB,MAC,MAE,MAH,MAJ,MAK,MAL, MAM,MWB,MWC,MWH,MWJ,MWL,	8
2	PAOZZ	96906	MS35387-1	REFLECTOR,INDICATIN.....	8
3	PAOZZ	19207	12414315-003	NUT,PLAIN,HEXAGON M5 X .8.....	12
4	PAOZZ	56161	10504502	SCREW,CAP,HEXAGON H M5 X .8 X 25... UOC:MAA,MAB,MAC,MAE,MAH,MAJ,MAK,MAL, MAM,MWB,MWC,MWH,MWJ,MWL,	4
5	PAOZZ	44940	800-2010	SCREW,CAP,HEXAGON H M5 X .8 X 20... UOC:MAG,	4
6	PAOZZ	19207	12414570-013	WASHER,LOCK M5.3..... UOC:MAG,	4
7	PAOZZ	15526	DIN931-M5X30-8.8 -A4C	SCREW,CAP,HEXAGON H M5 X.8 X 30.... UOC:MAF,MWF,	4

END OF FIGURE

11	12 THROUGH 65
----	---------------------

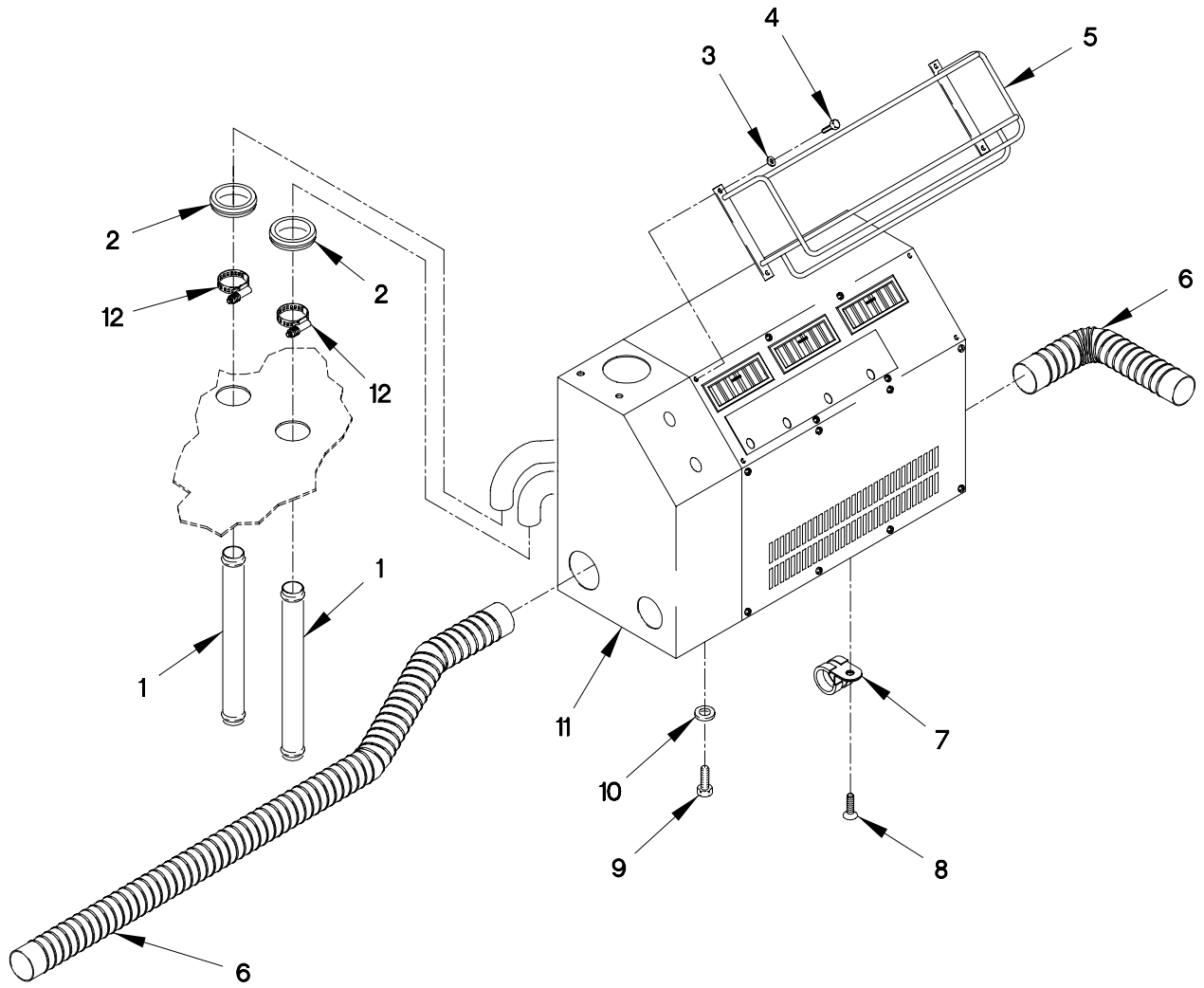


FIGURE 425. PERSONNEL HEATER ASSEMBLY (SHEET 1 OF 3)