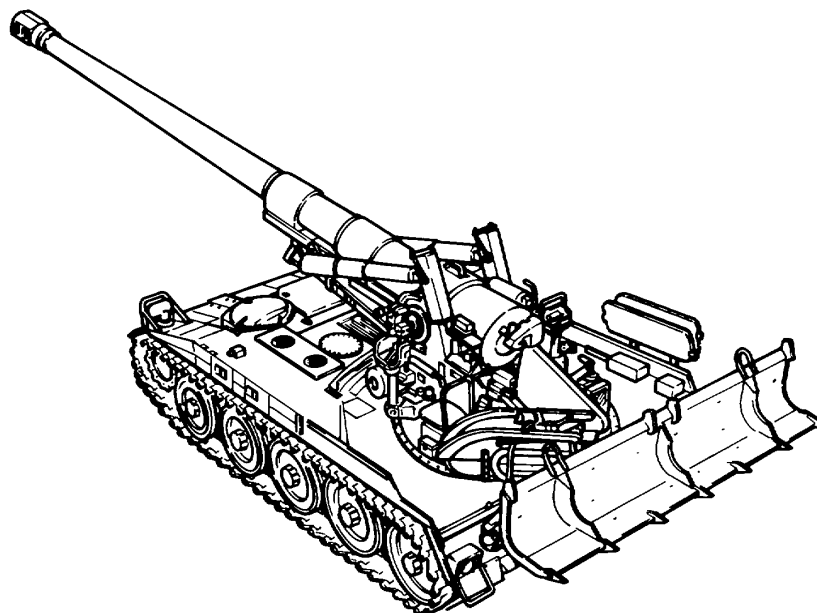


DEPARTMENT OF THE ARMY TECHNICAL MANUAL

UNIT, DIRECT SUPPORT, AND GENERAL
SUPPORT MAINTENANCE REPAIR PARTS
AND SPECIAL TOOLS LIST (INCLUDING
DEPOT MAINTENANCE REPAIR PARTS AND
SPECIAL TOOLS)

ARMAMENT AND TURRET COMPONENTS

HOWITZER, HEAVY,
SELF-PROPELLED:
8-INCH, M 1 10A2
(2350-01-041-4590) (EIC:3E3)



DISTRIBUTION STATEMENT A. Approved for public release; distribution is unlimited.

HEADQUARTERS, DEPARTMENT OF THE ARMY
JANUARY 1991

UNIT, DIRECT SUPPORT, AND GENERAL SUPPORT MAINTENANCE
REPAIR PARTS AND SPECIAL TOOLS LIST
(INCLUDING DEPOT MAINTENANCE REPAIR PARTS AND SPECIAL TOOLS)

ARMAMENT AND TURRET COMPONENTS

HOWITZER, HEAVY, SELF-PROPELLED: 8-INCH, M110A2
(2350-01-041-4590) (EIC:3E3)

Current as of 22 October 1990

DISTRIBUTION STATEMENT A. Approved for public release; distribution is unlimited.

REPORTING ERRORS AND RECOMMENDING IMPROVEMENTS

You can help improve this manual. If you find any mistakes or if you know of a way to improve the procedures, please let us know. Mail your letter, DA Form 2028 (Recommended Changes to Publications and Blank Forms), or DA Form 2028-2 located in the back of this manual direct to Commander, U.S. Army Armament, Munitions and Chemical Command, ATTN: AMSMC-MAS, Rock Island, IL 61299-6000. A reply will be furnished to you.

TABLE OF CONTENTS

		Page	Illus/ Figure
Section I	Introduction	1	
Section II	Repair Parts List	1-1	
Group 00	M110A2 Self-Propelled Howitzer 8736973, Fire Control, Gun Mount, Turret, and Turret Bearing Installations, and Cannon Assembly	1-1	1
Group 00	M1 10A2 Self-Propelled Howitzer 8736973, Rammer-Loader and Elevating and Traversing Installations	2-1	2
Group 00	M110A2 Self-Propelled Howitzer 8736973, Hydraulic System Installation	3-1	3

*This manual supersedes armament and turret components portions of TM 9-2350-304-20P, including all changes, dated July 1981, and TM 9-2350-304-34P-2, including all changes, dated October 1981.

TABLE OF CONTENTS (cont)

	Page	Illus/ Figure
Group 00	M110A2 Self-Propelled Howitzer 8736973, Electrical Installation.....	4-1 4
Group 01	Fire Control Installation 9350381, M137 and M138 Telescope Mounts, M15 Quadrant, M139 and M 115 Telescopes, and M 1 A 1 Collimator	5-1 5
Group 01	Fire Control Installation 9350381, Data Display Group (Left Side).....	6-1 6
Group 01	Fire Control Installation 9350381, Data Display Group (Right Side).....	7-1 7
Group 01	Fire Control Installation 9350381, Vehicular Applique System Mounting Hardware.....	8-1 8
Group 01	Fire Control Installation 9350381, M140 Alinement Device Mount and Attaching Hardware (Left Side).....	9-1 9
Group 01	Fire Control Installation 9350381, M140 Alinement Device Mount and Attaching Hardware (Right Side).....	10-1 10
	0101 M 15 Panoramic Telescope 8587340.....	11-1 11
	0102 M139 Elbow Telescope 10556120.....	12-1 12
	0103 M15 Fire Control Quadrant 8247683.....	13-1 13
	0104 M138 Telescope Mount 8587500.....	14-1 14
	0105 M137 Telescope Mount 8587295.....	15-1 15
	0106 M1A1 Infinity Aiming Reference Collimator 10556235.....	16-1 16
Group 02	M201A1 Cannon Assembly 11579521 and 0201 Cannon Assembly 11578719.....	17-1 17
	020101 M35 Firing Mechanism Assembly 8767203.....	18-1 18
	020102 Breech Mechanism Assembly 11579234 and 02010204 Spindle Assembly 11579242 and 02010205 Hinge Block Assembly 11579241 and 02010206 Breechblock Assembly 8769465 and 02010207 Hinge Pin 5570575 and 02010208 Breech Ring Assembly 11579238.....	19-1 19
	02010201 Block Assembly 11577750.....	20-1 20
	02010202 Housing Assembly 8767195.....	21-1 21
	02010203 Counterbalance Assembly 7225021.....	22-1 22
	020103 Tube Assembly 11578720.....	23-1 23
Group 03	Gun Mount Installation 12253871 and 0303 Recoil Connecting Link 10881947.....	24-1 24
Group 03	Gun Mount Installation 12253871, Equilibrator and Mast Plate.....	25-1 25

TABLE OF CONTENTS (cont)

	Page	Illus/ Figure
Group 03	Gun Mount Installation 12253871, Equilibrator Adjusting Parts	26-1 26
Group 03	Gun Mount Installation 12253871, Left Trunnion Cap and Bearings	27-1 27
Group 03	Gun Mount Installation 12253871, Right Trunnion Cap and Bearings	28-1 28
	0301 Pneumatic Equilibrator Assembly 8426930 and	
	030101 Valve Assembly 9345111	29-1 29
	0302 M174 Gun Mount Assembly 12253872, Hydraulic Lines and Fittings (Old)	30-1 30
	0302 M174 Gun Mount Assembly 12253872, Yoke, Wipers, and Related Items	31-1 31
	0302 M174 Gun Mount Assembly 12253872, Cover, Control Cam, and Related Items	32-1 32
	0302 M174 Gun Mount Assembly 12253872, Travel Lock Group	33-1 33
	0302 M174 Gun Mount Assembly 12253872, Forward Hydraulic Lines and Fittings (Modified)	34-1 34
	0302 M174 Gun Mount Assembly 12253872, Rear Hydraulic Lines and Fittings (Modified)	35-1 35
	0302 M174 Gun Mount Assembly 12253872, Replenisher, Elevating Gear, Cradle, and Cylinder Assemblies	36-1 36
	0302 M174 Gun Mount Assembly 12253872, Retracting Valve	37-1 37
	030201 Cradle Mount Assembly 12253874 and	
	03020101 M174 Cradle Assembly 12253873	38-1 38
	030202 Replenisher Assembly 9328469	39-1 39
	030202 Replenisher Assembly (Alternate) 10914823 and	
	03020201 Actuating Cylinder 8426877	40-1 40
	030203 Recoil Stroke Control Cam 10892026	41-1 41
	030204 Recuperator and Counterrecoil Cylinder Assembly 10891986	42-1 42
	03020401 Linear Actuating Head Assembly 8430040	43-1 43
	03020402 Counterrecoil Stuffing Box Assembly 8430033 and	
	0302040201 Gland Assembly 8408518	44-1 44
	03020403 Counterrecoil Piston Assembly 8430030 and	
	0302040301 Gland and Key Assembly 8408552	45-1 45
	03020404 Recuperator Cylinder Front Head Assembly (Modified) 9344318	46-1 46
	03020404 Recuperator Cylinder Front Head Assembly 5507195	47-1 47

TABLE OF CONTENTS (cont)

	Page	Illus/ Figure
03020405 Recuperator Cylinder Head Assembly (Rear) 10891987		
and		
0302040501 Valve Assembly 9327807		
and		
0302040502 Oil Index Mechanical Housing Assembly 7117324.....	48-1	48
03020406 Recuperator Floating Piston Assembly 8408511	49-1	49
030205 Recoil Cylinder Assembly 10891797		
and		
03020502 Piston and Rod Assembly 11643299.....	50-1	50
03020501 Stuffing Box Assembly 8427050		
and		
0302050101 Gland and Dowel Assembly 8427072		
and		
0302050102 Gland and Dowel Assembly 8427059		
and		
0302050103 Gland and Key 8427071	51-1	51
Group 04 Turret Installation 10901100, Boxes, Rack, Straps, Covers, Brackets, and Guard	52-1	52
Group 04 Turret Installation 10901100, Seats.....	53-1	53
Group 04 Turret Installation 10901100, Stops and Seals.....	54-1	54
0401 Individual Gunner's Vehicular Seat 10901351		
and		
040101 Seat Back Cushion 10908528	55-1	55
0402 Assistant Gunner's Vehicular Seat 10901351-1		
and		
040201 Seat Back Cushion 9350434.....	56-1	56
0403 Hand Grenade Box Assembly 8700274	57-1	57
0404 Turret Stowage Access Door 10902695.....	58-1	58
0405 Support Assembly 12254183		
and		
040501 Manual Control Handle 12254184.....	59-1	59
0406 Seat Bracket Assembly 11643144.....	60-1	60
Group 05 Elevating and Traversing Installation 10892500, Traversing Constant Speed Drive and Traversing Final Drive.....	61-1	61
Group 05 Elevating and Traversing Installation 10892500, Elevating Final Drive Assembly and Elevating Hydraulic Drive Unit.....	62-1	62
0501 Traversing Constant Speed Drive 11675639, Housing, Column, Shaft, Handle, and Related Items	63-1	63
0501 Traversing Constant Speed Drive 11675639		
and		
050105 Speed Gear Assembly 11675344	64-1	64
050101 Traversing and Elevating Drive Torque Handles 11593054	65-1	65

TABLE OF CONTENTS (cont)

	Page	Illus/ Figure
050102 Traversing and Elevating Drive Torque Locks 11675354		
and		
05010201 Remote Control Levers 11675359.....	66-1	66
050103 Traversing and Elevating Drive Hydraulic Motors 11675636.....	67-1	67
05010301 Traversing and Elevating Hydraulic Motor and Brake Assemblies 11643204	68-1	68
050104 Traversing and Elevating Differential 11675345-2	69-1	69
0502 Traversing Final Drive 11675635.....	70-1	70
0503 Elevating Hydraulic Drive Unit 11675637.....	71-1	71
050301 Traversing and Elevating Drive Torque Handles 11593054	65-1	65
050302 Traversing and Elevating Drive Torque Locks 11675354		
and		
05030201 Remote Control Levers 11675359.....	66-1	66
050303 Traversing and Elevating Drive Hydraulic Motors 11675636.....	67-1	67
05030301 Traversing and Elevating Hydraulic Motor and Brake Assemblies 11643204.....	68-1	68
050304 Traversing and Elevating Differential 11675345-2.....	69-1	69
0504 Elevating Final Drive Assembly 10892450		
and		
050401 Primary Speed Gear Assembly 11675344.....	72-1	72
Group 06 Rammer Installation 11675814-2		
and		
Group 06 0605 Cover Assembly 11675392.....	73-1	73
Rammer Installation 11675814-2, Arm, Latch Assembly, Lock Assembly, Traversing Cylinder, and Related Items	74-1	74
0601 Rammer Traversing Cylinder Assembly 11617732	75-1	75
0602 Rim Latch Set 11675463	76-1	76
0603 Rim Lock Set 11675481	77-1	77
0604 Power Loader-Rammer 11675813, Loader Arm, Cylinder Assembly, and Related Items	78-1	78
0604 Power Loader-Rammer 11675813, Guard, Slide, Trough, Cylinder, and Related Items.....	79-1	79
0604 Power Loader-Rammer 11675813, Headlink and Chain Assembly and Gear Case Group.....	80-1	80
0604 Power Loader-Rammer 11675813, Gear Case and Head Shaft Group	81-1	81
060401 Roller Chain 11675686-2	82-1	82
06040101 Headlink Assembly 9388631	83-1	83
06040102 Roller Chain 11675685	84-1	84
060402 Lift Cylinder Assembly 10898661.....	85-1	85
060403 Ramming Cylinder 10898650.....	86-1	86

TABLE OF CONTENTS (cont)

	Page	Illus/ Figure
Group 07	Hydraulic System Installation 10901550 and	
	0712 Filter 11784317	87-1 87
Group 07	Hydraulic System Installation 10901550, Traversing Control.....	88-1 88
Group 07	Hydraulic System Installation 10901550, Traversing Drive	89-1 89
Group 07	Hydraulic System Installation 10901550, Traversing Valves and Check Valve	90-1 90
Group 07	Hydraulic System Installation 10901550, Left-Hand Elevating Control Lines and Fittings.....	91-1 91
Group 07	Hydraulic System Installation 10901550, Right-Hand Elevating Control Lines and Fittings.....	92-1 92
Group 07	Hydraulic System Installation 10901550, Elevating Drive Hydraulic Lines and Fittings.....	93-1 93
Group 07	Hydraulic System Installation 10901550, Elevating Hydraulic Lines and Fittings (Cross-over)	94-1 94
Group 07	Hydraulic System Installation 10901550, Elevating and Traversing Manual Control Handles and Electrical Components	95-1 95
Group 07	Hydraulic System Installation 10901550, Elevating Valves and Check Valve.....	96-1 96
Group 07	Hydraulic System Installation 10901550, Loader-Rammer Hydraulic System	97-1 97
Group 07	Hydraulic System Installation 10901550, Rammer Traversing Lines and Fittings	98-1 98
Group 07	Hydraulic System Installation 10901550, Loader-Rammer Control Lines and Fittings	99-1 99
Group 07	Hydraulic System Installation 10901550 and	
	0711 Rammer Cover Assembly 11643439.....	100-1 100
Group 07	Hydraulic System Installation 10901550, Power System Lines and Fittings	101-1 101
Group 07	Hydraulic System Installation 10901550, Power System Lines and Fittings (Reservoir and Accumulator).....	102-1 102
Group 07	Hydraulic System Installation 10901550 and	
	0712 Hydraulic Filter 11784317	103-1 103
Group 07	Hydraulic System Installation 10901550, Reservoir and Hand Pump.....	104-1 104
Group 07	Hydraulic System Installation 10901550, Motor and Pump.....	105-1 105
	0701 Turret Deceleration Valve to Traverse Deceleration Switch Wiring Harness 11643041	106-1 106
	0702 Turret Deceleration Wiring Harness 11642963-1	107-1 107
	0703 Manual Control Handle Assembly 11675401.....	108-1 108
	0704 Check Valve Multiple Connector 10901255.....	109-1 109

TABLE OF CONTENTS (cont)

	Page	Illus/ Figure
0705 Traversing Control Grip Assembly (Left Side) 11675400	110-1	110
0706 Dial Pressure Gage 11784042	111-1	111
0707 Rammer Multiple Connector 11784059 and		
070701 Regulator Flow Valve 11784099 and		
070702 Rammer Pressure Sensitive Cable Assembly 11784126 and		
070703 Solenoid Valve 11784100.....	112-1	112
0708 Rotating Manifold 12552059.....	113-1	113
0709 Hydraulic Accumulator 10901901.....	114-1	114
0710 Motor and Pump 10901465 and		
071002 Direct Current Motor 8724474.....	115-1	115
071001 Hydraulic Rotary Pump 11643196.....	116-1	116
Group 08 Electrical Installation 10892400, BCS Mounting.....	117-1	117
Group 08 Electrical Installation 10892400, Data Display Group (Right Side).....	118-1	118
Group 08 Electrical Installation 10892400, Rammer Solenoid Valve Branched Wiring Harness	119-1	119
Group 08 Electrical Installation 10892400, Power System Electrical Components and Warning Light	120-1	120
Group 08 Electrical Installation 10892400, Power System Electrical Components and Utility Outlet Electrical Lead	121-1	121
0801 Pivot Interlock Push Switch 11784081.....	122-1	122
0802 Tray Interlock Sensitive Switch 11 784070.....	123-1	123
0803 Warning Light 12355239.....	124-1	124
0804 Floor Disconnect to Turret Disconnect and Accessories Branched Wiring Harness 12254055	125-1	125
0805 Floor Disconnect to Oil Pump Motor Switch and Accessories Branched Wiring Harness 12254054	126-1	126
0806 Collimator to Utility Outlet Branched Wiring Harness 11593134.....	127-1	127
0807 Circuit Breaker and Turret Disconnect to Oil Gear Relay and 24-Volt Feed Electrical Lead 10908426	128-1	128
0808 Hull Disconnect, Interphone Amplifier to Hull Disconnect Driver's Control Cable Assembly 10908424.....	129-1	129
Group 09 Turret Bearing Installation 10898400.....	130-1	130

TABLE OF CONTENTS (cont)

	Page	Illus/ Figure
0901 Plain Bearing Unit 10956570		
and		
Group 10 090101 Race Assembly 11592865	131-1	131
Group 11 Projectile Lifting Tray 11675458-2	132-1	132
Group 9999 Backup Computer System Wiring Harness Installation 4024818	133-1	133
Group 9999 Bulk Items	BULK-1	BULK
Section III		
Group 9500 Special Tools List.....	134-1	
Group 9500 Special Tools	134-1	134
Group 9500 Special Tools	135-1	135
Section IV		
Cross-Reference Indexes	I-1	
National Stock Number Index	I-1	
Part Number Index.....	I-24	
Figure and Item Number Index	I-75	

**UNIT, DIRECT SUPPORT, AND GENERAL
SUPPORT MAINTENANCE
REPAIR PARTS AND SPECIAL TOOLS LIST**

Section I. INTRODUCTION

1. SCOPE

This RPSTL lists and authorizes spares and repair parts; special tools; special test, measurement, and diagnostic equipment (TMDE); and other special support equipment required for performance of unit, direct support, and general support maintenance of the M 11 0A2 Self-Propelled, Heavy Howitzer. It authorizes the requisitioning, issue, and disposition of spares, repair parts, and special tools as indicated by the source, maintenance, and recoverability (SMR) codes.

2. GENERAL

In addition to Section I, Introduction, this Repair Parts and Special Tools List is divided into the following sections:

a. Section II. Repair Parts List. A list of spares and repair parts authorized by this RPSTL for use in the performance of maintenance. The list also includes parts which must be removed for replacement of the authorized parts. Parts lists are composed of functional groups in ascending alphanumeric sequence, with the parts in each group listed in ascending figure and item number sequence. Bulk materials are listed in item name sequence. Repair parts kits are listed separately in their own functional group within Section II. Repair parts for repairable special tools are also listed in this section. Items listed are shown on the associated illustration(s)/figure(s).

b. Section III. Special Tools List. A list of special tools, special TMDE, and other special support equipment authorized by this RPSTL (as indicated by Basis of Issue (BOI) information in DESCRIPTION AND USABLE ON CODE (UOC) column) for the performance of maintenance.

c. Section IV. Cross-reference Indexes. A list, in National item identification number (NIIN) sequence, of all National stock numbered items appearing in the listing, followed by a list in alphanumeric sequence of all part numbers appearing in the listing. National stock numbers and part numbers are cross-referenced to each illustration figure and item number appearance. The figure and item number index lists figure and item numbers in alphanumeric sequence and cross-references NSN, CAGEC, and part numbers.

3. EXPLANATION OF COLUMNS (SECTIONS II AND III)

a. ITEM NO. (Column (1)). Indicates the number used to identify items called out in the illustration.

b. SMR CODE (Column (2)). The Source, Maintenance, and Recoverability (SMR) code is a 5-position code containing supply/requisitioning information, maintenance level authorization criteria, and disposition instruction, as shown in the following breakout:

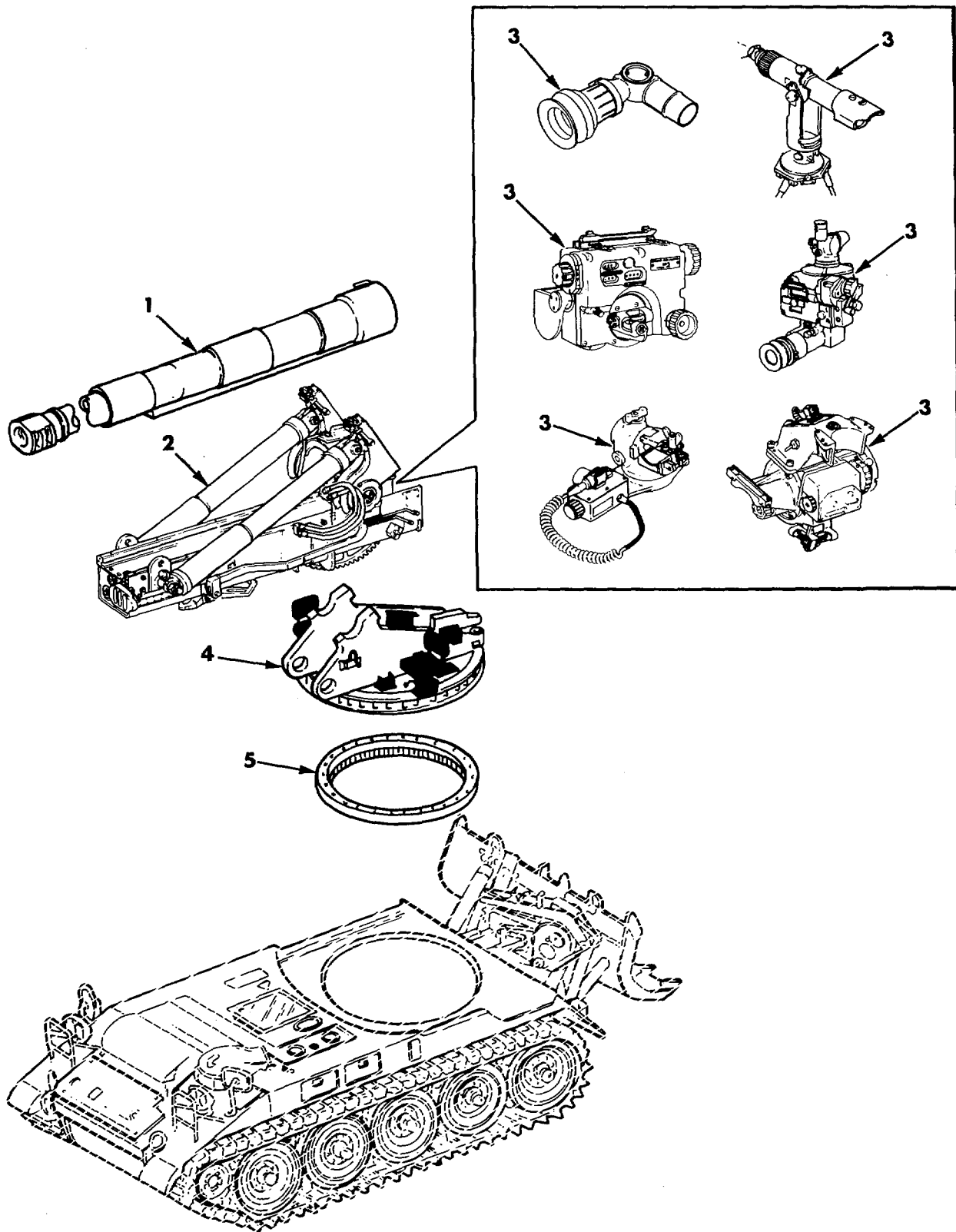


Figure 1. M110A2 Self-Propelled Howitzer 8736973, Fire Control, Gun Mount, Turret, and Turret Bearing Installations, and Cannon Assembly.

(1) ITEM NO	(2) SMR CODE	(3) CAGEC	(4) PART NUMBER	(5) DESCRIPTION AND USABLE ON CODES (UOC)	(6) QTY
-------------------	--------------------	--------------	-----------------------	--	------------

GROUP 00
 FIG. 1 M110A2 SELF-PROPELLED HOWITZER
 8736973, FIRE CONTROL, GUN
 MOUNT, TURRET, AND TURRET
 BEARING INSTALLATIONS, AND
 CANNON ASSEMBLY

1	AFFFA	19206	11579521	CANNON, M201A1 HOWITZER 8 INCH SEE FIG. 17 ASSY BKDN	1
2	XCFFF	19204	12253871	GUN MOUNT INSTL	1
3	XCFFF	19200	9350381	FIRE CONTROL INSTL	1
4	XCFFF	19207	10901100	TURRET INSTALLATION	1
5	XCFFF	19200	10898400	TURRET BEARING INS	1

END OF FIGURE

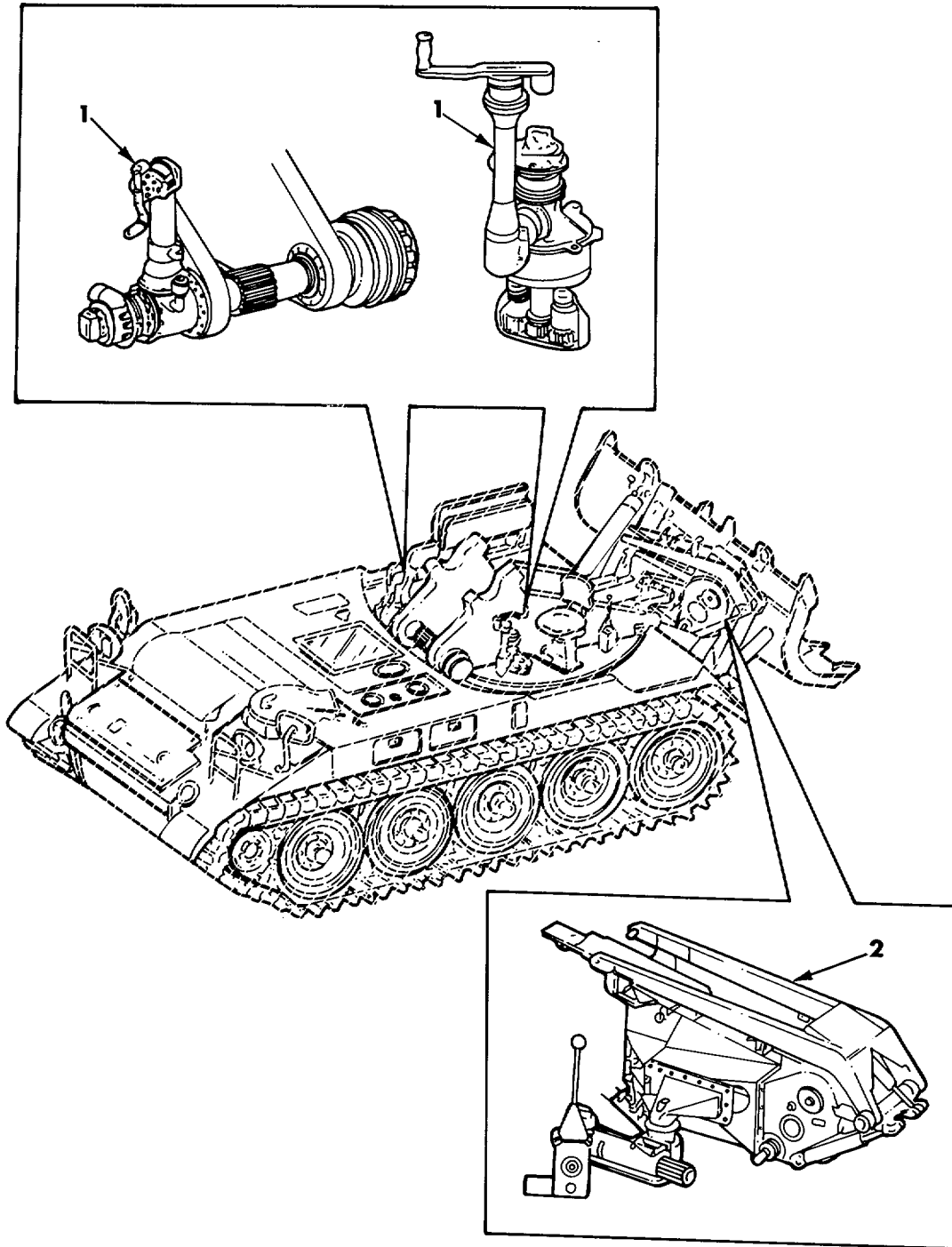


Figure 2. M110A2 Self-Propelled Howitzer 8736973, Rammer-Loader and Elevating and Traversing Installations.

(1) ITEM NO	(2) SMR CODE	(3) CAGEC	(4) PART NUMBER	(5) DESCRIPTION AND USABLE ON CODES (UOC)	(6) QTY
-------------------	--------------------	--------------	-----------------------	--	------------

GROUP 00
 FIG. 2 M110A2 SELF-PROPELLED HOWITZER
 8736973, RAMMER-LOADER AND
 ELEVATING AND TRAVERSING
 INSTALLATIONS

1	XCFFF	19204	10892500	ELEVATING, TRAVERSIN	1
2	XCFFF	19204	11675814-2	RAMMER INSTL	1

END OF FIGURE

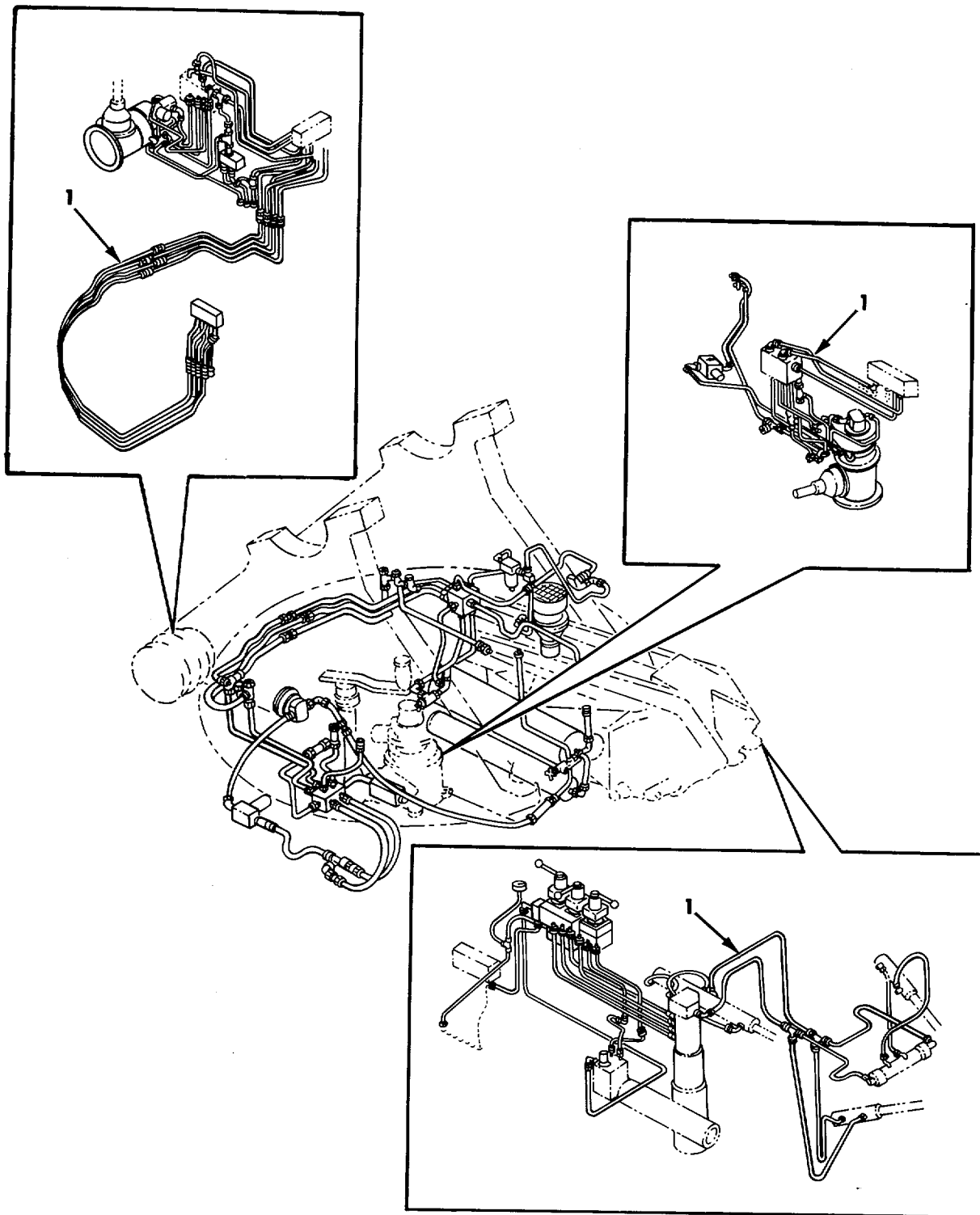


Figure 3. M110A2 Self-Propelled Howitzer 8736973, Hydraulic System Installation.

(1) ITEM NO	(2) SMR CODE	(3) CAGEC	(4) PART NUMBER	(5) DESCRIPTION AND USABLE ON CODES (UOC)	(6) QTY
-------------------	--------------------	--------------	-----------------------	--	------------

GROUP 00
 FIG. 3 M110A2 SELF-PROPELLED HOWITZER
 8736973, HYDRAULIC SYSTEM
 INSTALLATION

1	XCFFF	19207	10901550	HYDR SYS INSTL.....	1
---	-------	-------	----------	---------------------	---

END OF FIGURE

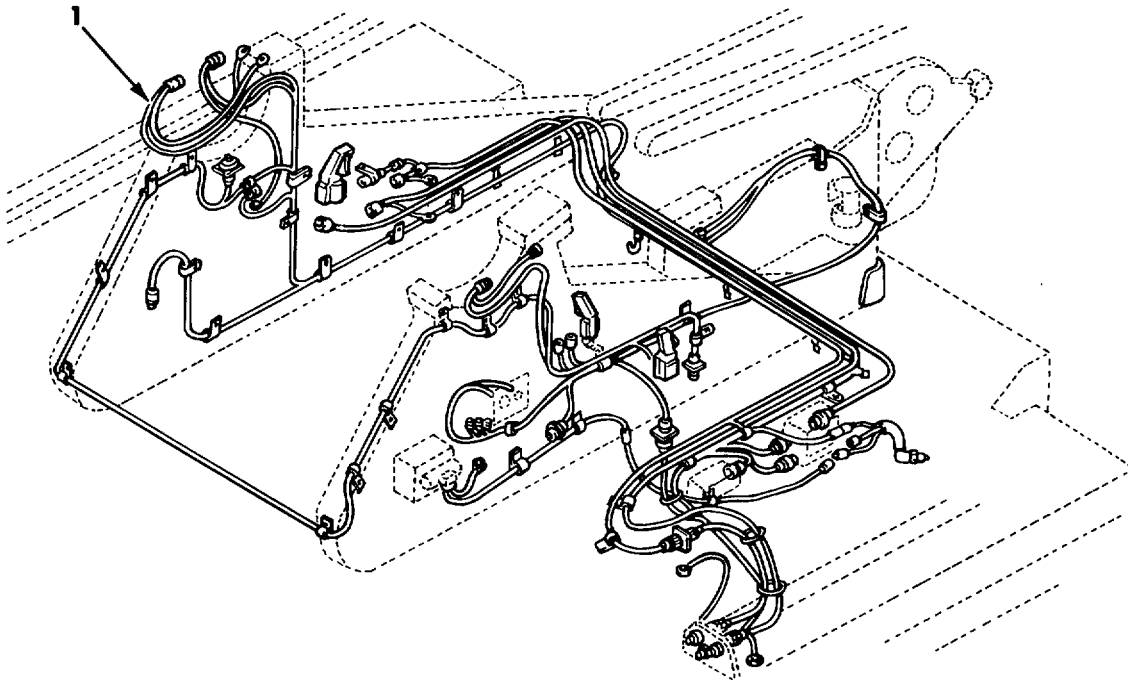


Figure 4. M110A2 Self-Propelled Howitzer 8736973, Electrical Installation.

SECTION II					
(1)	(2)	(3)	(4)	(5)	(6)
ITEM	SMR		PART		
NO	CODE	CAGEC	NUMBER	DESCRIPTION AND USABLE ON CODES (UOC)	QTY

GROUP 00
 FIG. 4 M110A2 SELF-PROPELLED HOWITZER
 8736973,ELECTRICAL
 INSTALLATION

1	XCFFF	19207	10892400	ELECTRICAL INSTL.....	1
---	-------	-------	----------	-----------------------	---

END OF FIGURE

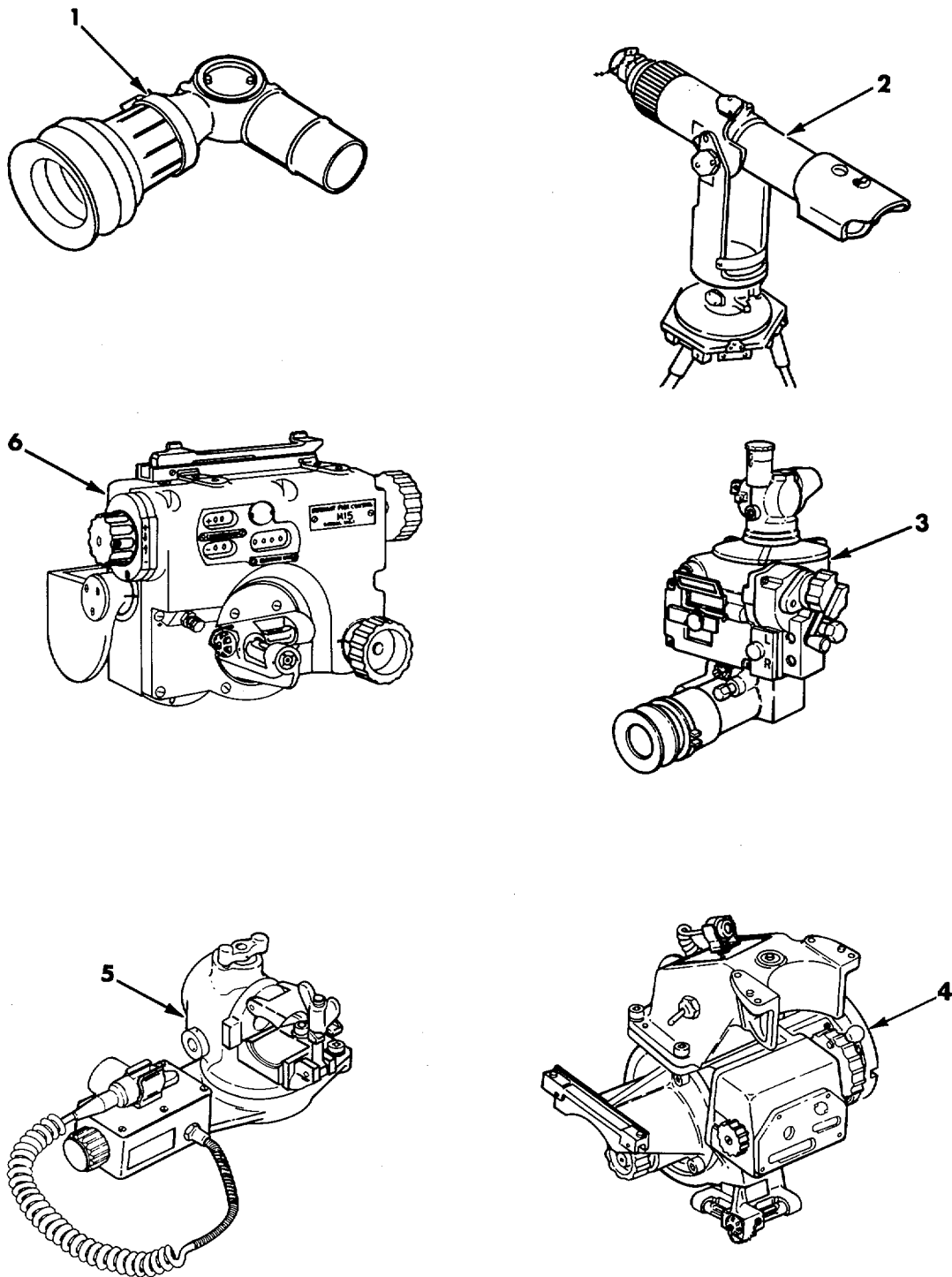


Figure 5. Fire Control Installation 9350381, M137 and M138 Telescope Mounts, M15 Quadrant, M139 and M115 Telescopes, and M1A1 Collimator.

SECTION II					
(1)	(2)	(3)	(4)	(5)	(6)
ITEM	SMR		PART		
NO	CODE	CAGEC	NUMBER	DESCRIPTION AND USABLE ON CODES (UOC)	QTY
GROUP 01 FIG. 5 FIRE CONTROL INSTALLATION 9350381,M137 AND M138 TELESCOPE MOUNTS,M15 QUADRANT, M139 AND M115 TELESCOPES, AND M1A1 COLLIMATOR					
1	PAOHH	19200	10556120	TELESCOPE, M139 ELBOW ICOEI FOR M110A2	1
2	PACLL	19200	10556235	COLLIMATOR, INFINITY INFINITY AIMING BIIL FOR M110A2	1
3	PAOHH	19200	8587340	TELESCOPE, PANORAMIC M115, ICOEI FOR M110A2	1
4	PAOHH	19200	8587295	MOUNT, TELESCOPE TELESCOPE MOUNT M137	1
5	PAOHH	19200	8587500	MOUNT, TELESCOPE M138, ICOEI FOR M110A2	1
6	PAOHH	19200	8247683	QUARANT, FIRE CONTRO M15, ICOEI FOR M110A2 END OF FIGURE	1