

**TECHNICAL MANUAL  
UNIT, DIRECT SUPPORT, AND GENERAL SUPPORT MAINTENANCE  
REPAIR PARTS AND SPECIAL TOOLS LIST  
(INCLUDING DEPOT MAINTENANCE REPAIR PARTS  
AND SPECIAL TOOLS LIST)**

**FOR  
CARRIER, PERSONNEL, FULL-TRACKED, ARMORED,  
M113A3  
(2350-01-219-7577)**

**CARRIER, COMMAND POST, LIGHT TRACKED,  
M577A3  
(2350-01-369-6085)**

**CARRIER, SMOKE GENERATOR, FULL TRACKED,  
M1059A3  
(2350-01-369-6083)**

**CARRIER, ANTI-TANK (TOW), FULL TRACKED, ARMORED  
M901A3  
(2350-01-369-7253)**

**CARRIER, MORTAR, 120-MM M121, SELF PROPELLED,  
M1064A3  
(2350-01-369-6082)**

**CARRIER, STANDARDIZED INTERGRATED COMMAND POST SYSTEM (SICPS)  
M1068A3  
(2350-01-369-6086)**

**CARRIER, FIRE SUPPORT PERSONNEL, FULL TRACKED, ARMORED  
M981A3  
(2350-01-369-6079)**

**CHASSIS, MECHANIZED SMOKE OBSCURANT  
M58  
(2350-01-418-6654)**

**Distribution: Approved for public release; distribution is unlimited.**

---

**HEADQUARTERS, DEPARTMENT OF THE ARMY**

**SEPTEMBER, 1997**

TECHNICAL MANUAL

\*NO. 9-2350-277-24P

HEADQUARTERS  
DEPARTMENT OF THE ARMY  
Washington D.C., 13 Sept 1997

**TECHNICAL MANUAL  
UNIT, DIRECT SUPPORT, AND GENERAL SUPPORT MAINTENANCE  
REPAIR PARTS AND SPECIAL TOOLS LIST  
(INCLUDING DEPOT MAINTENANCE REPAIR PARTS  
AND SPECIAL TOOLS LIST)  
FOR  
CARRIER, PERSONNEL, FULL-TRACKED, ARMORED,  
M113A3  
(2350-01-219-7577)**

**CARRIER, COMMAND POST, LIGHT TRACKED,  
M577A3  
(2350-01-369-6085)**

**CARRIER, SMOKE GENERATOR, FULL TRACKED,  
M1059A3  
(2350-01-369-6083)**

**CARRIER, ANTI-TANK (TOW), FULL TRACKED, ARMORED  
M901A3  
(2350-01-369-7253)**

**CARRIER, MORTAR, 120-MM M121, SELF PROPELLED,  
M1064A3  
(2350-01-369-6082)**

**CARRIER, STANDARDIZED INTERGRATED COMMAND POST SYSTEM (SICPS)  
M1068A3  
(2350-01-369-6086)**

**CARRIER, FIRE SUPPORT PERSONNEL, FULL TRACKED, ARMORED  
M981A3  
(2350-01-369-6079)**

**CHASSIS, MECHANIZED SMOKE OBSCURANT  
M58  
(2350-01-418-6654)**

**CURRENT AS OF 15 APRIL 1997**

**REPORTING OF ERRORS**

You can help improve this manual. If you find any mistakes or if you know of a way to improve the procedures, please let us know. Mail your letter DA Form 2028 (Recommended Changes to Publications and Blank Forms) or DA Form 2n9.8-2 located in the back of this manual direct to: Commander, I T S Army Tank-automotive and Armaments Command ATTN:AMSTA-AC-NML, Rock Island, IL 6122C-763i). A reply -will be furnished to you.

Distribution: Approved for public release; distribution is unlimited.

**\*This publication supersedes TM 9-2350-277-24P, Dated 25 July 1994**

TABLE OF CONTENTS

	PAGE	ILLUS FIGURE
SECTION I INTRODUCTION .....	1	
SECTION II REPAIR PARTS LIST .....	1-1	
Group 01 - ENGINE		
0100 Engine and Container.....	1-1	1
0100 TV Modulator Cable Bracket and Attaching Hardware .....	2-1	2
0100 Engine Mounting Brackets and Engine Mounts .....	3-1	3
0101 Cylinder Block Assembly, End Plate and Related Parts .....	4-1	1
0101 Air Box Drain and Related Parts .....	5-1	5
0101 Engine Front Supports .....	6-1	6
0101 Cylinder Head Assembly and Lifting Brackets .....	7-1	7
0103 Pulley Assembly .....	8-1	8
0103 Drive Plate, Flywheel, and Housing .....	9-1	9
0105 Rocker Arm Covers .....	10-1	10
0106 Engine Oil Sampling Valve, Hose, and Oil Gage Rod Clamp .....	11-1	11
0106 Oil Cooler Assembly .....	12-1	12
0106 Oil Pan and Oil Gage Assembly.....	13-1	13
0106 Oil Filter Assembly, Adapter, and Related Parts .....	14-1	14
0108 Exhaust Manifold .....	15-1	15
Group 03 - FUEL SYSTEM		
0302 Fuel Pump Assembly and Drive .....	16-1	16
0302 Fuel Lines and Fittings .....	17-1	17
0304 Air Cleaner Installation .....	18-1	18
0304 Air Cleaner Hoses and Fittings.....	19-1	19
0304 Air Cleaner Assembly .....	20-1	20
0305 Turbocharger and Related Parts .....	21-1	21
0305 Blower Drive Gear and Related Parts .....	22-1	22
0305 Air Inlet Housing and Related Parts .....	23-1	23
0306 Engine Fuel Supply and Fuel Return Hoses .....	24-1	24
0306 External Fuel Tank Components .....	25-1	25
0306 External Fuel Tank Components .....	26-1	26
0306 Fuel Lines, Fittings and Mounting Hardware .....	27-1	27
0306 Internal Left Tank Fuel Filler Neck and Lines .....	28-1	28
0306 Internal Right Tank Fuel Filler Neck and Lines .....	29-1	29
0306 Dual Fuel Tanks and Mounting Hardware .....	30-1	30
0306 Dual Fuel Tanks Cross Over Tubes and Hoses .....	31-1	31
0306 Fuel Lines and Fittings .....	32-1	32
0306 Fuel Lines, Fittings and Mounting Hardware .....	33-1	33
0306 Fuel Line Fittings .....	34-1	34
0306 Fuel Lines Fittings and Mounting Hardware .....	35-1	35
0306 Fuel Line Fittings .....	36-1	36
0306 Cover, Fuel Access.....	37-1	37
0309 Fuel Filter and Strainer Assemblies and Related Parts .....	38-1	38
0311 Air Box Heater Related Parts .....	39-1	39
0311 Air Box Heater Assembly.....	40-1	40
0311 Air Pump, Ignition Coil, and Related Parts .....	41-1	41

TABLE OF CONTENTS (cont)

	PAGE	ILLUS FIGURE
0311 Glow Plug Controller and Related Parts .....	41A-1	41A
0312 Fuel Controls .....	42-1	42
0312 Fuel Control Linkage .....	43-1	43
Group 04 - EXHAUST SYSTEM		
0401 Exhaust System Assembly .....	44-1	44
Group 05 - COOLING SYSTEM		
0501 Radiator and Expansion Tank .....	45-1	45
0503 Thermostat, Hoses, and Mounting Hardware .....	46-1	46
0503 Radiator Hoses, Tubes and Elbows .....	47-1	47
0503 Radiator Hoses, Tubes and Elbows .....	48-1	48
0503 Thermostat, Housing, Lines, and Fittings .....	49-1	49
0504 Cooler Pump Assembly, Idler Pulley, and Belt Set .....	50-1	50
0505 Variable Speed Drive Hose, Pulleys, and Transmission Oil Return Hose .....	51-1	51
0505 Variable Speed Drive .....	52-1	52
0505 Fan and Drive Installation .....	53-1	53
0505 Vaneaxial Fan.....	54-1	54
0505 Gear Box Assembly .....	55-1	55
0505 Deleted .....	56-1	56
Group 06 - ELECTRICAL SYSTEM		
0601 200 AMP Generator Mounting and Belt .....	57-1	57
0601 200 AMP Generator .....	58-1	58
0602 Regulator and Mounting hardware .....	59-1	59
0603 Starter Relay and Leads .....	60-1	60
0603 Starter and Mounting Hardware .....	61-1	61
0607 Master Switch Panel .....	62-1	62
0607 Master Switch Assembly .....	63-1	63
0607 Distribution Box .....	64-1	64
0607 Distribution Box .....	65-1	65
0607 Distribution Box .....	66-1	66
0607 Instrument Panel Switches, Lights, and Gages .....	67-1	67
0607 Instrument Panel Switches, Lights, and Gages .....	68-1	68
0607 Instrument Panel Indicator Lights .....	69-1	69
0607 Warning Light Panel Assembly .....	70-1	70
0607 Distribution Box and Instrument Panel Mounting.....	71-1	71
0608 Telepost and Cover .....	72-1	72
0608 Steering Solenoid, Power Supply, and Electrical Components .....	73-1	73
0608 Power Pack Assembly (Old Configuration .....	74-1	74
0608 Power Pack Old Configuration.....	75-1	75
0609 Horn, Blackout Lights, and Mounting Hardware.....	76-1	76
0609 Headlight.....	77-1	77
0609 Stop and Taillight Assembly, left Side .....	78-1	78
0609 Stop and Taillight Assembly, Right Side .....	79-1	79
0609 Dome Lights and Mounting Hardware .....	80-1	80
0609 Dome Light .....	81-1	81

TABLE OF CONTENTS (cont)

	PAGE	ILLUS FIGURE
0603 Tail Light and Mounting Hardware, Right Side .....	82-1	82
0609 Tail Light and Mounting Hardware, Left Side .....	83-1	83
0610 Ramp Warning Switches and Buzzer .....	84-1	84
0610 Power Plant Sending Units .....	85-1	85
0610 Brake Switches .....	86-1	86
0612 Batteries and Mounting Hardware .....	87-1	87
0612 Batteries and Mounting Hardware .....	88-1	88
0612 Batteries and Mounting Hardware .....	89-1	89
0612 Battery Box Covers and Mounting .....	90-1	90
0612 Batteries and Mounting Hardware .....	91-1	91
0612 Battery Box Assembly .....	92-1	92
0612 Battery Box Cover and Mounting.....	93-1	93
0612 Batteries and Battery Tray Slides, Left Side .....	94-1	94
0612 Battery Tray Assembly. ....	95-1	95
0612 Battery Box Cover and Mounting .....	96-1	96
0613 Instrument Panel Electrical Components .....	97-1	97
0613 Instrument Panel Utility Outlet Electrical Lead Assembly . ....	98-1	98
0613 Utility Outlet Electrical Assembly .....	99-1	99
0613 NATO Slave Receptacle Assembly .....	100-1	100
0613 Master Switch/Dome Light Electrical Lead Assembly.....	101-1	101
0613 Master Switch/Distribution Box Electrical Lead Assembly .....	102-1	102
0613 Master Switch/Distribution Box Wiring Harness Assembly .....	103-1	103
0613 Taillight Wiring Harness Assembly and Attaching Hardware .....	104-1	104
0613 Engine Wiring Harness .....	105-1	105
0613 Transmission Wiring Harness .....	106-1	106
0613 Wiring Harness Attaching Hardware, Power Plant .....	107-1	107
0613 Wiring Harness, Transmission Controller .....	108-1	108
0613 Vehicle Special Purpose Electrical Branched Cable Assembly .....	109-1	109
0613 Vehicle Electrical Components .....	110-1	110
0613 Vehicle Electrical Components .....	111-1	111
0613 Main Wiring Harness, Forward Section .....	112-1	112
0613 Main Wiring Harness, Forward Section .....	113-1	113
0613 Main Wiring Harness, Forward Section.....	114-1	114
0613 Main Wiring Harness, Forward Section .....	115-1	115
0613 Main Wiring Harness, Rear Section .....	116-1	116
0613 Wiring Harness, Branched .....	117-1	117
0613 Main Vehicular Wiring Harness .....	118-1	118
0613 Smoke Grenade Launcher Wiring Harness, Left Side .....	119-1	119
0613 Smoke Grenade Launcher Wiring Harness, Right Side .....	120-1	120
0613 Smoke Grenade Launcher Wiring Harness .....	121-1	121
0613 Wiring Harness, Smoke Grenade Launcher .....	122-1	122
0613 Smoke Grenade launcher Wiring Harness Attaching Hardware.....	123-1	123
0613 Wiring Harness, Steering Lock Light .....	124-1	124
0613 Wiring Harness, Battery .....	125-1	125
0613 Wiring Harness, Radio .....	126-1	126
0613 Wiring Harness, Headlight .....	127-1	127
0613 Cable, Special Purpose, Instrument Panel .....	128-1	128
0613 Wiring Harness, Warning Panel .....	129-1	129
0613 Electrical Wiring Harness Components and Mounting Hardware .....	130-1	130
0613 Electrical Harness Attaching Hardware .....	131-1	131

TABLE OF CONTENTS (cont)

	PAGE	ILLUS FIGURE
0613 Electrical Harness Attaching Hardware.....	132-1	132
0613 Electrical Harness Attaching Hardware .....	133-1	133
0613 Electrical harness Attaching Hardware .....	134-1	134
0613 Electrical Harness Attaching Hardware .....	135-1	135
0613 Electrical Harness Attaching Hardware .....	136-1	136
0613 Wiring Harness, Radio .....	137-1	137
0613 Electrical Harness Attaching Hardware .....	138-1	138
0613 Electrical Harness Attaching Hardware .....	139-1	139
0613 Electrical Wiring Harness Components and Mounting Hardware .....	140-1	140
0613 Electrical Harness Attaching Hardware .....	141-1	141
0613 Main Harness Attaching Hardware, left Side .....	142-1	142
0613 Main Harness Attaching Hardware, Left Rear .....	143-1	143
0613 Main Harness Attaching Hardware, Right Side .....	144-1	144
0616 Ventilation Fan Assembly and Mounting Hardware .....	145-1	145
 Group 07 - TRANSMISSION		
0700 Transmission with Container.....	146-1	16
0700 Transmission Oil Drain .....	147-1	147
0700 Transmission Mounting Parts .....	148-1	148
0705 Electrical-Controller, Transmission (New Configuration .....	149-1	149
0708 Tow Start and Controls .....	150-1	150
0710 Fill Tube Assembly .....	151-1	151
0710 Right Hand Cover and Center Housing .....	152-1	152
0710 Output Driven Gear and Steer Shaft Drive Gear .....	153-1	153
0710 Left Hand Cover .....	154-1	154
0710 Top Cover .....	155-1	155
0710 Deleted .....	156-1	156
0710 Center Housing and Hydrostatic Pump and Motor .....	157-1	157
0710 Left Hand End Cover and Output Shaft .....	158-1	158
0710 Right Hand End Cover and Brake Apply Cam Shaft .....	159-1	159
0714 Governor and Governor Body .....	160-1	160
0714 G2 Backup, Priority Valve and Oil Transfer Plate .....	161-1	161
0721 Transmission Oil Cooler Hoses and Sampling Valve .....	162-1	162
0721 Filter Cover Assembly and Filter Element .....	163-1	163
 Group 08 - TRANSFER AND FINAL DRIVE ASSEMBLIES		
0801 Final Drive Assembly and Filler Tube .....	164-1	161
0801 Final Drive Assembly. ....	165-1	165
 Group 09 - PROPELLER, PROPELLER SHAFT, UNIVERSAL JOINTS COUPLER AND CLAMP ASSEMBLY		
0900 Propeller Shaft and component parts .....	166-1	166
 Group 12- BRAKES		
1206 Brake Installation .....	167-1	167
1206 Lever, Manual Control . ....	168-1	168

TABLE OF CONTENTS (cont)

	PAGE	ILLUS FIGURE
Group 13 - WHEELS AND TRACKS		
1301 Torsion Bar and Anchor .....	169-1	169
1301 Support Arm Assembly .....	170-1	170
1301 Support Assembly, Inner .....	171-1	171
1303 Idler Arm Assembly .....	172-1	172
1303 Track Tension Adjuster .....	173-1	173
1303 Track Adjuster, Vehicular .....	174-1	174
1304 Track Drive Sprockets .....	175-1	175
1305 Track and Track Shoe Assembly .....	176-1	176
1311 Idler Wheels .....	177-1	177
1311 Road Wheels and Shock Guards .....	178-1	178
 Group 14 - STEERING		
1401 Steering Lock and Shaft Assembly .....	179-1	179
1401 Steering Linkage .....	180-1	180
1401 Steering Housing Assembly .....	181-1	181
1401 Housing, Bearing .....	182-1	182
 Group 15 - FRAME, TOWING ATTACHMENTS, AND DRAWBARS		
1503 Pintle Assembly, Tow .....	183-1	183
1503 Towing Eyes and Railroad Tiedowns .....	184-1	184
 Group 16 - SPRINGS AND SHOCK ABSORBERS		
1604 Shock Absorber Assembly and Mounting .....	185-1	185
 Group 18 - BODY, CAB, HOOD AND HULL		
1801 Splash Guards .....	186-1	186
1801 Track Cover Installation .....	187-1	187
1801 Engine Access Covers and Attaching Hardware .....	188-1	188
1801 Engine Access Covers and Attaching Hardware .....	188A-1	188A
1801 Lifting Hooks, Light Guards, and Access Cover .....	189-1	189
1801 Hull Access Covers and Plugs .....	190-1	190
1801 Electrical Cable Covers .....	191-1	191
1801 Access Cover and Antenna Guards .....	192-1	192
1801 External Vehicle Components .....	193-1	193
1801 M26 Periscope Mounting Hardware .....	194-1	194
1801 Smoke Grenade Launcher Mounting .....	195-1	195
1801 Water Barrier Installation .....	196-1	196
1801 Trim Vane Assembly and Components .....	197-1	197
1801 Trim Vane Assembly and Components .....	197A-1	197A
1801 Trim Vane Extension Control .....	198-1	198
1801 Release Assembly, Trim Vane .....	199-1	199
1801 Grill Assembly and Components .....	200-1	200
1801 Grill, Metal Bolted .....	201-1	201

TABLE OF CONTENTS (cont)

	PAGE	ILLUS FIGURE
1801 Power Plant Door Installation .....	202-1	202
1801 Door, Power Plant .....	203-1	203
1801 Hatch, Cargo Cover .....	204-1	204
1801 Cargo Hatch Cover Assembly .....	205-1	205
1801 Cargo Hatch Components .....	206-1	206
1801 Cargo Hatch Cover Hinges and Latches .....	207-1	207
1801 Door, Cargo Hatch .....	208-1	208
1801 Cargo Hatch Covers and Hinges .....	209-1	209
1801 Hatch Cover External Locking Hardware .....	210-1	210
1801 Turbine Access Door Assembly .....	210A-1	210A
1801 Hopper Hatch Installation .....	210B-1	210B
1801 Hatch Cover Internal Locking Hardware .....	211-1	211
1801 Commander's Hatch Cover Assembly .....	212-1	212
1801 Commander's Hatch Cover Latches .....	213-1	213
1801 Commander's Cupola Installation .....	214-1	214
1801 Commander's Cupola Assembly .....	215-1	215
1801 Commander's Cupola Hatch and Cover Assemblies .....	216-1	216
1801 Commander's Cupola and Cover Latches .....	217-1	217
1801 Commander's Hatch Machine Gun Mount .....	218-1	218
1801 Spall Liner Installation, Right Side .....	219-1	219
1801 Spall Liner Installation, Left Side .....	220-1	220
1801 Spall Liner Brackets and Mounting Hardware .....	221-1	221
1801 Floor Plate and Ramp Door Supplemental Armor .....	222-1	222
1801 Ramp Assembly and Mounting Hardware .....	223-1	223
1801 Ramp Assembly and Mounting Hardware .....	224-1	224
1801 Ramp Door and Access Door Assembly .....	225-1	225
1801 Ramp Door and Access Door Assembly .....	226-1	226
1801 Rear Access Door Direct Vision Port .....	227-1	227
1801 Ramp Assembly and Mounting Hardware .....	228-1	228
1801 Ramp Door and Access Door Assembly .....	229-1	229
1801 Ramp Lock Installation .....	230-1	230
1801 Ramp Lock Assemblies .....	231-1	231
1801 Ramp Lock Release Latch and Mounting Hardware .....	232-1	232
1801 Ramp Lock Release Handle and Mounting Hardware .....	233-1	233
1801 Ramp Lock Release Handle and Mounting Hardware .....	234-1	234
1801 Gun Shield Mounting Installation .....	235-1	235
1801 Armor Mounting Provisions .....	236-1	236
1801 Armor Mounting Provisions .....	237-1	237
1801 Smoke Generator Armor Installation .....	238-1	238
1801 Power Plant Door and Trim Vane Mounting Provisions .....	239-1	239
1801 Threaded Inserts .....	240-1	240
1801 SCREW Threaded Special Purpose Inserts .....	241-1	241
1801 Hull SCREW Threaded Inserts .....	242-1	242
1801 SCREW Threaded Special Purpose Inserts .....	243-1	243
1801 Power Train and Air Cleaner Mounting Provisions .....	244-1	244
1801 Threaded Inserts .....	245-1	245
1801 Threaded Inserts, Suspension .....	246-1	246
1801 Threaded Inserts .....	247-1	247
1803 Driver's Hatch Assembly .....	248-1	248
1803 Driver's Hatch Assembly .....	249-1	249



TABLE OF CONTENTS (cont)

	PAGE	ILLUS FIGURE
1803 Driver's Hatch Assembly .....	250-1	250
1803 Driver's Hatch Cover Assembly .....	251-1	251
1803 Driver's Hatch Yoke Support Assembly .....	252-1	252
1803 Latch Assembly, Driver's Hatch .....	253-1	253
1803 Driver's Hatch and Periscope Latches .....	254-1	254
1803 Plate Assembly, Quick Release .....	255-1	255
1803 Driver's Thermal Viewer Mounting Plate DELETED .....	255A-1	255A
1805 Floor Plates .....	256-1	256
1805 Floor Plates .....	257-1	257
1805 Floor Plates and Cushions .....	258-1	258
1805 Vehicle Interior Floor .....	259-1	259
1805 Floor Plate Pads .....	260-1	260
1803 Floor Plates and Cushions .....	261-1	261
1803 Floor Plates and Cushions .....	261A-1	261A
1806 Personnel Seats and Straps .....	262-1	262
1806 Commander's Seat, Personnel Seats and Seat Belts .....	263-1	263
1806 Personnel Seats and Straps .....	264-1	264
1806 Personnel Seats and Tables Installation .....	265-1	265
1806 Personnel Seats and Tables Installation, Right .....	266-1	266
1806 Personnel Seats and Tables Installation, Left .....	267-1	267
1806 Personnel Seats and Straps .....	268-1	268
1806 Smoke Generator's Operator's Seat .....	269-1	269
1806 Driver's Seat Installation .....	270-1	270
1806 Commander's Seat and Platform.....	271-1	271
1806 Commander's Seat and Platform.....	272-1	272
1806 Commander's Platform Assembly .....	273-1	273
1806 Commander's Platform Components .....	274-1	274
1806 Commander's Seat and Platform.....	275-1	275
1806 Driver's Seat and Radio Operator's Seat Assembly .....	276-1	276
1806 Driver's Seat Mount Assembly .....	277-1	277
1806 Radio Operator's Seat .....	278-1	278
1806 Commander's Platform Assembly .....	279-1	279
1806 Commander's Seat .....	280-1	280
1806 Commander's Seat .....	281-1	281
1806 Commander's Jump Seat .....	282-1	282
1808 Stowage Components .....	283-1	283
1808 Stowage Straps .....	283A-1	283A
1808 Stowage Straps and Rifle Brackets .....	284-1	284
1808 Stowage Components .....	285-1	285
1808 Stowage Components .....	286-1	286
1808 Right Side Stowage Straps and Mounting Hardware .....	287-1	287
1808 Left Side Stowage Straps and Mounting Hardware .....	288-1	288
1808 Stowage Straps and Mounting Hardware .....	289-1	289
1808 External Stowage Straps, Covers, and Mounting Hardware .....	290-1	290
1808 External Stowage Straps, Covers, and Mounting Hardware .....	291-1	291
1808 Internal Stowage Straps, Racks and Hardware .....	292-1	292
1808 Bracket Mounting, Fire Extinguisher .....	293-1	293
1808 Stowage Straps and Mounting Hardware .....	294-1	294
1808 Stowage Straps and Mounting Hardware .....	295-1	295
1808 Stowage Straps, Antenna Guards and Covers . .....	296-1	296

TABLE OF CONTENTS (cont)

	PAGE	ILLUS FIGURE
1808 Internal Vehicle Components .....	297-1	297
1808 Vehicle Straps and Components .....	298-1	298
1808 Internal Vehicle Stowage Straps .....	299-1	299
1808 Intervehicle Power Cable .....	300-1	300
1808 Stowage Straps .....	301-1	301
1808 Stowage Straps .....	302-1	302
1808 Stowage Straps .....	303-1	303
1808 External Stowage Straps, Pads, and Mounting Hardware .....	304-1	304
1808 Stowage Components .....	305-1	305
1808 Backpack Stowage Rack .....	306-1	306
1808 External Stowage Mortar Base .....	307-1	307
1808 Racks, Ammunition .....	308-1	308
1808 Racks, Ammunition .....	309-1	309
1808 Racks Assembly, Rifle .....	310-1	310
1808 Left Side, Internal Stowage, Racks and Hardware .....	311-1	311
1808 Right Side, Internal Stowage, Racks and Hardware .....	312-1	312
1808 Left Side, Internal Stowage, Racks and Hardware .....	313-1	313
1808 Right Side, Internal Stowage, Racks and Hardware .....	314-1	314
1808 Right Side, Internal Stowage, Racks and Hardware .....	315-1	315
1808 Fire Extinguisher Mount and Related Hardware .....	316-1	316
1808 Launch Tube Components .....	317-1	317
1808 Missile Stowage Racks .....	318-1	318
1808 Missile Stowage Racks .....	319-1	319
1808 Tow Tripod Stowage Components .....	320-1	320
1808 Periscope Stowage Box .....	321-1	321
1808 Electrical Equipment Rack Assembly .....	322-1	322
1808 Electrical Equipment Rack Assembly .....	323-1	323
1808 Antenna Mast Mounting Hardware .....	324-1	324
Group 22 - BODY CHASSIS OR HULL AND ACCESSORY ITEMS		
2201 Blackout Curtain Assembly .....	325-1	325
2201 Extension Cover Tent Assembly .....	326-1	326
2201 Extension Cover Mounting Hardware .....	327-1	327
2201 Extension Cover Mounting Hardware .....	328-1	328
2201 Extension Cover and Boot Wall Mounting .....	329-1	329
2202 Driver's Level Indicator .....	330-1	330
2205 Bilge Pump, Front .....	331-1	331
2205 Bilge Pump, Rear .....	332-1	332
2207 Personnel Compartment Heating Unit .....	333-1	333
2207 Heater Kit Fuel Lines and Fittings .....	334-1	334
2207 Heater Kit Fuel Lines and Fittings .....	335-1	335
2207 Personnel Heater Kit Fuel Lines and Fittings .....	336-1	336
2207 Personnel Heater Fuel Lines and Fittings .....	337-1	337
2210 Decals and Markers .....	338-1	338
2210 Decals and Markers .....	338A-1	338A
2210 Decals and Markers .....	338B-1	338B
2210 Decals and Markers .....	339-1	339
2210 Data Plates and Decals .....	340-1	340
2210 Data Plates and Decals .....	340A-1	340A

TABLE OF CONTENTS (cont)

	PAGE	ILLUS FIGURE
2210 Data Plates and Decals .....	341-1	341
2210 Data Plates and Decals .....	342-1	342
2210 Data Plates and Decals .....	343-1	343
2210 Data Plates and Decals .....	343A-1	343A
2210 Data Plates and Decals .....	344-1	344
2210 Decals and Markers .....	344A-1	344A
2210 Decals and Markers .....	345-1	345
2210 Decals and Markers .....	346-1	346
2210 Decals and Markers .....	347-1	347
2210 Decals and Markers .....	348-1	348
2210 Decals and Markers .....	349-1	349
 Group 24 - HYDRAULIC LIFT COMPONENTS		
2401 Hydraulic Pump .....	350-1	350
2404 Hydraulic Lines and Fittings .....	351-1	351
2406 Ramp Actuator Hydraulic Lines Fittings .....	352-1	352
2406 Ramp Actuator Hydraulic Lines Fittings .....	353-1	353
2406 Ramp Control Valve, Lines and Fittings .....	354-1	354
2406 Ramp Hydraulic Lines and Fittings .....	355-1	355
2406 Hydraulic Tank and Mounting .....	356-1	356
 Group 26 - TOOLS AND TEST EQUIPMENT (REPAIR PARTS)		
2604 Sling Assembly, Power Plant .....	357-1	356
2604 Stand Assembly, Power Plant .....	358-1	358
2604 Stand Assembly, Power Plant .....	359-1	359
 Group 29 - AUXILIARY GENERATOR AND ENGINE AND CONTROLS		
2901 Auxiliary Generator Assembly and Enclosure .....	360-1	360
2901 Auxiliary Generator Cover Assembly .....	361-1	361
2938 Auxiliary Generator Fuel Lines and Fittings .....	362-1	362
 Group 33 - SPECIAL PURPOSE KITS		
3303 Engine Coolant Heater, Pump, Tubes and Fittings .....	363-1	363
3303 Engine Coolant Heater Fuel Lines and Fittings .....	364-1	364
3303 Engine Coolant Heater Filter and Fittings .....	365-1	365
3303 Engine Coolant Heater Hoses and Fittings .....	366-1	366
3303 Engine Coolant Heater Battery Box Insulation .....	367-1	367
3303 Engine Coolant Heater Wiring Harness Attaching Hardware .....	368-1	368
3303 Heater Assembly, Coolant .....	369-1	369
3303 Box Assembly, Control .....	370-1	370
3303 Wiring Harness, Coolant Heater .....	371-1	371
3303 Heater Kit, Personnel .....	372-1	372
3303 Personnel Compartment Heater Kit .....	373-1	373
3303 Heater Kit Fuel Lines and Fittings .....	374-1	374
3303 Fuel Filter/Separator .....	375-1	375
3303 Heater Kit Fuel Lines and Fittings .....	376-1	376

TABLE OF CONTENTS (cont)

	PAGE	ILLUS FIGURE
3303 Heater Kit Fuel Lines and Fittings .....	377-1	377
3303 Personnel Heater Duct .....	378-1	378
3303 Covered Extension Liner .....	379-1	379
3307 Capstan Drum and Adapter Kit .....	379A-1	379A
3307 Vehicle Anchor Kit .....	379B-1	379B
3307 Installation Kit, Windshield .....	380-1	380
3307 Litter Kit .....	381-1	381
3307 Kit, Shield .....	382-1	382
3307 Mount, Shield Assembly .....	383-1	383
3307 Armor Kit (57k0467 .....	384-1	384
3307 Armor Kit (57k0467 .....	385-1	385
3307 Vehicular Accessories Stowage Box .....	386-1	386
3307 Armor Panel, Front Left .....	387-1	387
3307 Armor Panel, Front Right .....	388-1	388
3307 Armor Panel, Power Plant Door .....	389-1	389
3307 Armor Panel Bracket Assembly, Ramp .....	390-1	390
3307 Armor Panel Bracket Assembly, Ramp Door .....	391-1	391
3307 Armor Kit (57k0429 .....	392-1	392
3307 Armor Kit (57K0429 .....	393-1	393
3307 Mine Armor Kit (57k0432.....	394-1	394
3307 NBC Kit .....	395-1	395
3307 NBC Kit .....	396-1	396
3307 NBC Kit .....	397-1	397
3307 NBC Cable Assy .....	398-1	398
3307 NBC Kit .....	399-1	399
3307 Heater Accessory Kit .....	400-1	400
3307 NBC Kit .....	401-1	401
3307 NBC Kit .....	401A-1	401A
3307 NBC Kit .....	401B-1	401B
3307 NBC Kit .....	401C-1	401C
3307 NBC Kit .....	401D-1	401D
3307 NBC Kit .....	401E-1	401E
3307 NBC Kit .....	401F-1	401F
3307 NBC Kit .....	401G-1	401G
3307 NBC Kit .....	401H-1	401H
3307 NBC Kit .....	401I-1	401I
3307 NBC Kit .....	401J-1	401J
3307 NBC Kit .....	401K-1	401K
3307 Smoke Generator, Supports and Covers .....	402-1	402
3307 Smoke Generator Cap Assembly, Hoses and Attaching Hardware .....	403-1	403
3307 Smoke Generator Wiring Harnesses and Attaching Hardware.....	404-1	404
3307 Smoke Generator Wiring Harnesses, Hoses, and Attaching Hardware .....	405-1	405
3307 Smoke Generator Cans and Straps .....	406-1	406
3307 Water/Ration Heater Kit . .....	406A-1	406A
3307 Water/Ration Heater Accessory Kit .....	406B-1	406B
3307 ODS Straps and Covers .....	406C-1	406C
3307 Driver's Thermal Viewer .....	<b>DELETED</b> .....	406D-1 406D

TABLE OF CONTENTS (cont)

	PAGE	ILLUS FIGURE
Group 42 - ELECTRICAL EQUIPMENT		
4202 Patch Panel Box, Roadside Data Box, and Double V2 Printer Mount Installation .....	407-1	407
4202 Double V2 Printer Mount Assembly .....	408-1	408
4202 Roadside Data Box Assembly .....	409-1	409
4202 Patch Panel Box Assembly .....	410-1	410
4202 Power Control Enclosure and Power Supply Storage .....	411-1	411
4202 Power Control Enclosure, Front Internal Views .....	412-1	412
4202 Power Control Enclosure, Right Side Internal/External Views .....	413-1	413
4202 Power Control Enclosure, Left Side Internal Views .....	414-1	414
4202 Power Control Enclosure, Faceplate Assembly .....	415-1	415
4202 Inverter Housing, Tent Interface Panel, Power Entry Box and Cable Assemblies .....	416-1	416
4202 Electrical Power and Communication System Attaching Hardware .....	417-1	417
4202 Power Entry Box Assembly .....	418-1	418
4202 Tent Interface Box and Panel Assembly .....	419-1	419
4202 Inverter Housing Assembly .....	420-1	420
4202 External Communication Box, Facsimile Machine Mount, Cable and Attaching Hardware .....	421-1	421
4202 Facsimile Machine Mount, Assembly .....	422-1	422
4202 External Communication Box Assembly .....	423-1	423
4202 Curbside Data Box, LAN Cables, Blackout Light Adapter Cables and Attaching Hardware .....	424-1	424
4202 Power Distribution Box, AC Light Cord Cables and Attaching Hardware .....	425-1	425
4202 Power Extension Box, Power Extension Cables and Attaching Hardware .....	426-1	426
4202 AC/DC Power Boxes and Attaching Hardware .....	427-1	427
4202 Power Supply Stowage Box Assembly .....	428-1	428
4202 AC/DC Power Boxes, Single Point LAN Ground Box and Cable Assembly .....	429-1	429
4202 Single Point LAN Ground Box Assembly .....	430-1	430
4202 Fluorescent Lights and Mounting Hardware .....	431-1	431
Group 47 - GAGES, WEIGHING AND MEASURING DEVICES		
4701 Speedometer and Tachometer Installation .....	432-1	432
Group 67 - PRECISION INSTRUMENTS AND SYSTEMS, MECHANICAL, ELECTRICAL, ELECTRONIC		
6715 STE-ICE Installation .....	433-1	433
6715 STE-ICE Installation .....	433A-1	433A
6715 STE-ICE Installation .....	434-1	434
6715 STE-ICE Installation .....	435-1	435
6715 Distribution Box, STE-ICE .....	436-1	436
6715 Wiring Harness, STE-ICE .....	437-1	437
6715 Wiring Harness, Crew Compartment .....	438-1	438
6715 Wiring Harness, STE-ICE .....	439-1	439

TABLE OF CONTENTS (cont)

	PAGE	ILLUS FIGURE
Group 68 - WARNING, SCANNING, AND SIGNALING DEVICES AND NAVIGATIONAL INSTRUMENTS		
6809 Communication System and Mounting Hardware .....	440-1	440
6809 Communication Installation .....	440A-1	440A
Group 76 - FIRE FIGHTING EQUIPMENT COMPONENTS		
7639 Fire Extinguisher .....	441-1	441
7639 Fire Extinguisher, Engine and Turbine .....	441A-1	441A
Group 91-CHEMICAL, BIOLOGICAL, AND RADIOLOGICAL (CBR) EQUIPMENT		
9111 Ventilation Face Mask Installation .....	442-1	442
9111 Ventilation Face Mask Installation .....	443-1	443
9111 Ventilation Face Mask Installation .....	444-1	444
9111 Ventilation Face Mask Installation .....	445-1	445
9111 Ventilation Face Mask Control Panel .....	446-1	446
9111 NBC Installation .....	446A-1	446A
9111 Shock Mount Installation, CBR.....	447-1	447
9131 Chemical Agent Auto Alarm Kit .....	448-1	448
9131 Distribution Box, Chemical Agent Auto Alarm Kit .....	449-1	449
Group 94 - REPAIR KITS		
9401 Kits.....	Kits-1	Kits
Group 95 - BULK MATERIALS		
9501 Bulk .....	Bulk-1	Bulk
SECTION III SPECIAL TOOLS LIST.....	450-1	
Group 26 - TOOLS AND TEST EQUIPMENT		
2604 Organizational Tool Kit, Full Track .....	450-1	450
2604 Organizational Tool Kit, Full Track .....	451-1	451
2604 Direct Support Tool Kit, Full Track .....	452-1	452
2604 Direct Support Tool Kit, Full Track .....	453-1	453
2604 General Support Tool Kit, Thread Installer .....	454-1	454
2604 Special Tools, Engine .....	455-1	455
2604 Special Tools, Engine .....	456-1	456
2604 Special Tools, Transmission .....	457-1	457
SECTION IV CROSS REFERENCE INDEXES .....	I-1	
NATIONAL STOCK NUMBER INDEX.....	I-1	
PART NUMBER INDEX.....	I-1	
FIGURE AND ITEM NUMBER INDEX.....	I-1	

**UNIT MAINTENANCE,  
DIRECT SUPPORT AND  
GENERAL SUPPORT MAINTENANCE  
REPAIR PARTS AND SPECIAL TOOLS LIST  
(INCLUDING DEPOT MAINTENANCE PARTS)**

**SECTION I. INTRODUCTION**

**1. Scope**

This RPSTL lists and authorizes spares and repair parts; special tools; special test, measurement, and diagnostic equipment (TMDE); and other special support equipment required for performance of Unit, Direct Support and General Support Maintenance of the M113A3, M981A3, M1064A3, M1068A3, M577A3, M1059A3 and M901 A3 vehicles. It authorizes the requisitioning, issue, and disposition of spares, repair parts and special tools as indicated by the source, maintenance and recoverability (SMR) code.

**2. General**

In addition to Section I. Introduction, this Repair Parts and Special Tools List is divided into the following sections:

*a. Section II. Repair Parts Lists.* A list of spares and repair parts authorized by this RPSTL for use in the performance of maintenance. The list also includes parts which must be removed for replacement of the authorized parts. Parts lists are composed of functional groups in ascending alphanumeric sequence, with the parts in each group listed in ascending figure and item number sequence. Bulk materials are listed in item name sequence. Repair kits are listed separately in their own functional group within Section II. Repair parts for repairable special tools are also listed in the section. Items listed are shown on the associated illustration(s)/ figure(s).

*b. Section III. Special Tools List.* A list of special tools, special TMDE, and other special support equipment authorized by this RPSTL (as indicated by Basis of Issue (BOI) information in DESCRIPTION AND USABLE ON CODE column) for the performance of maintenance.

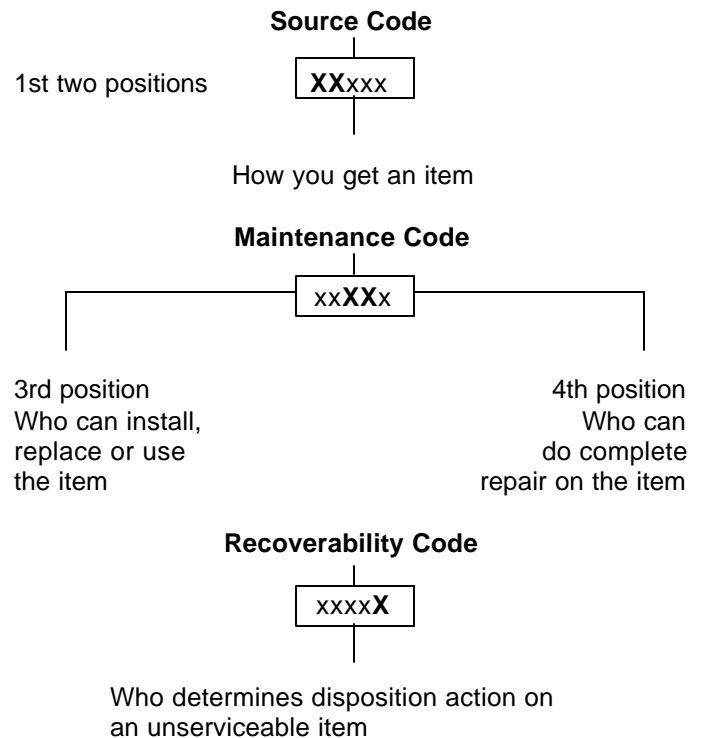
*c. Section IV. Cross-reference Indexes.* A list, in National Item Identification Number (NIIN) sequence, of all National stock numbered items appearing in the listing, followed by a list in alphanumeric sequence of all part numbers appearing in the listings. National stock numbers and part numbers are cross-referenced to each illustration, figure and item number appearance. The figure and item number index lists figure and item

numbers in alphanumeric sequence and cross-reference NSN, CAGE and part number.

**3. Explanation of Columns (Sections II and III).**

*a. ITEM NO. (Column (1)).* Indicates the number used to identify items called out in the illustration.

*b. SMR CODE (Column (2)).* The Source, Maintenance, and Recoverability (SMR) code is a 5-position code containing supply/requisitioning information, maintenance category authorization criteria and disposition instructions, as shown in the following breakout:



*\*Complete Repair.* Maintenance capacity, capability, and authority to perform all corrective maintenance tasks of the "Repair function in a use/user environment in order to restore serviceability to a failed item.

(1) Source Code. The source code tells you how to get an item needed for maintenance, repair or overhaul of an end item/equipment. Explanation of source codes follows:

<b>Code</b>	<b>Application/Explanation</b>
PA	Stocked items; use the applicable NSN to request/requisition items with these
PB	source codes. They are authorized to the category indicated by the code entered in 3rd position of the SMR code.
PC**	** Items coded PC are subject to deterioration.
PD	Items with these codes are not to be requested/requisitioned individually.
PE	They are part of a kit which is authorized to the maintenance category indicated in the 3rd position of the SMR code. The complete kit must be requisitioned and applied.
PF	
PG	
KD	
KF	
KB	
MO - (Made at UM AVUM Level)	Items with these codes are not to be requested/requisitioned individually. They must be made from bulk material which is identified by the part number in the DESCRIPTION AND USABLE ON CODE (UOC) column and listed in the Bulk Material group of the repair parts list in this RPSTL. If the item is authorized to you by the 3rd position of the SMR code, but if the source code indicates it is made at a higher level, order the item from the higher level of maintenance.
MF - (Made at DS/ AVUM Level)	
ML - (Made at Specialized Repair Act (SRA))	
MD - (Made at Depot)	
AO - (Assembled by UM/AVUM Level)	Items with these codes are not to be requested/requisitioned individually. The parts that make up the assembled item must be requisitioned or fabricated and assembled at the level of maintenance indicated by the source code. If the 3rd position of the SMR code authorizes you to replace the item, but the source code indicates the item is assembled at a higher level, order the item from the higher level of maintenance.
AF - (Assembled by DS/AVIM Level)	
AH - (Assembled by GS Category)	
AL - (Assembled SRA)	
AD - (Assembled by Depot)	

XA -	Do not requisition an "XA" - codes Item. Order its next higher assembly. (Also, refer to the NOTE below.)
XB -	If an "XB" item is not available from salvage, order it using the CAGE and part number given.
XC -	Installation drawing, diagram, instruction sheet, field service drawing, that is identified by the manufacturer's part number.
XD -	Item is not stocked. Order an "XD" - coded item through normal supply channels using the CAGE and part number given, if no NSN is available.

**NOTE:** Cannibalization or controlled exchange, when authorized, may be used as source of supply for items with the above source codes, except for those source coded "XA" or those aircraft support items restricted by requirements of AR 700-42.

(2) Maintenance Code. Maintenance codes tell you the level(s) of maintenance authorized to USE and REPAIR support items. The maintenance codes are entered in the third and fourth positions of the SMR Code as follows:

(a) The maintenance code entered in the third position tells you the lowest maintenance level authorized to remove, replace, and use an item. The maintenance code entered in the third position will indicate authorization to one of the following levels of maintenance:

<b>Code</b>	<b>Application/Explanation</b>
C	Crew or operator maintenance done within unit or aviation unit maintenance
O	Unit maintenance or aviation unit category can remove, replace and use the item.
F	Direct support or aviation intermediate level can remove, replace and use the item.
H	General support level can remove, replace and use the item.
L	Specialized repair activity can remove, replace and use the item.
D	Depot level can remove, replace and use the item



(b) The maintenance code entered in the fourth position tells whether or not the item is to be repaired and identifies the lowest maintenance level with the capability to do complete repair (i.e. perform all authorized repair functions.) (NOTE: Some limited repair may be done on the item at a lower level of maintenance, if authorized by the Maintenance Allocation Chart (MAC) and SMR codes.) This position will contain one of the following maintenance codes:

<b>Code</b>	<b>Application/Explanation</b>
O	Unit maintenance or aviation unit is the lowest level that can do complete repair of the item.
F	Direct support or aviation intermediate is the lowest level that can do complete repair of the item.
H	General support is the lowest level that can do complete repair of the item.
L	Specialized repair activity is the lowest level that can do complete repair of the item.
D	Depot is the lowest level that can do complete repair of the item.
Z	Nonreparable. No repair is authorized.
B	No repair is authorized. (No parts or special tools are authorized for the maintenance of a "B" coded item). However, the item may be reconditioned by adjusting, lubrication, etc, at the user level.

(3) Recoverability Code. Recoverability codes are assigned to items to indicate the disposition action on unserviceable items. The recoverability code is entered in the fifth position of the SMR code as follows:

<b>Code</b>	<b>Application/Explanation</b>
Z	Nonreparable item. When unserviceable, condemn and dispose of the item at the level of maintenance shown in the 3rd position of the SMR code.
O	Reparable item. When uneconomically repairable, condemn and dispose of the item at unit maintenance or aviation unit level.
F	Reparable item. When uneconomically repairable, condemn and dispose of the item at the direct support or aviation intermediate level.
H	Reparable item. When uneconomically repairable, condemn and dispose of the item at the general support level.

D	Reparable item. When beyond lower level repair capability, return to depot. Condemnation and disposal of item not authorized below depot level.
L	Reparable item. Condemnation and disposal of item not authorized below specialized repair activity (SRA).
A	Item requires special handling or condemnation procedure because of specific reasons (e.g. precious metal content, high dollar value, critical material, or hazardous material). Refer to appropriate manuals/directives for specific instructions.

c. *CAGEC (Column (3))*. The Commercial and Government Entity (CAGE) Code (C) is a 5-digit alphanumeric code which is used to identify the manufacturer, distributor or Government agency, etc. that supplied the item.

d. *PART NUMBER (Column (4))*. Indicates the primary number used by the manufacturer (individual, company, firm, corporation or Government activity), which controls the design and characteristics of the item by means of its engineering drawings, specifications standards and inspection requirements to identify an item or range of items.

**NOTE:** When you use a NSN to requisition an item, the item you receive may have a different part number from the part ordered.

e. *DESCRIPTION AND USABLE ON CODE (UOC) (Column (5))*. This column includes the following information:

(1) The Federal item name and, when required, a minimum description to identify the item.

(2) Physical security classification. Not applicable.

(3) Items that are included in kits and sets are listed below the name of the kit or set on Figure KIT.

(4) Spare/repair parts that make up an assembled item are listed immediately following the assembled item line entry.

(5) Part numbers for bulk materials are referenced in this column in the line entry for the item to be manufactured/fabricated.

(6) When the item is not used with all serial numbers of the same model, the effective serial numbers are shown on the last line(s) of the description (before UOC). Not applicable.

(7) The usable on code, when applicable (see paragraph 5, Special information).

(8) In the Special Tools List section, the basis of issue (BOI) appears as the last line(s) in the entry for each special tool, special TMDE and other special

support equipment. When density of equipment supported exceeds density spread indicated in the basis of issue, the total authorization is increased proportionately.

(9) The statement "END OF FIGURE" appears just below the last item description in Column 5 for a given figure in both Section II and Section III.

f. QTY (Column (6)). The QTY (quantity per figure column) indicates the quantity of the item used in the breakout shown on the illustration figure, which is prepared for a functional group, subfunctional group or an assembly. A "V" appearing in this column in lieu of a quantity indicates that the quantity is variable and the quantity may vary from application to application.

**4. Explanation of Columns (Section IV).**

a. NATIONAL STOCK NUMBER (NSN) INDEX.

(1) STOCK NUMBER column. This column lists the NSN by National item identification number (NIIN) sequence. The NIIN consists of the last nine

NSN  
 \_\_\_\_\_  
 digits of the NSN (i.e., 5305-01-674-1467)  
 NIIN

When using this column to locate an item, ignore the first 4 digits of the NSN. However, the complete NSN should be used when ordering items by stock number.

(2) FIG. column. This column lists the number of the Figure where the item is identified/located. The figures are in numerical order in Section II and Section III.

(3) ITEM column. The item number identifies the item associated with the figure listed in the adjacent FIG. column. This item is also identified by the NSN listed on the same line.

b. PART NUMBER INDEX. Part numbers in this index are listed by part number in ascending alphanumeric sequence (i.e., vertical arrangement of letter and number combination which places the first letter or digit of each group in order A through Z, followed by the numbers 0 through 9 and each following letter or digit in like order.)

(1) CAGEC column. The Commercial and Government Entity (CAGE) Code (C) is a 5-digit alphanumeric code used to identify the manufacturer, distributor or Government agency, etc., that supplies the item.

(2) PART NUMBER column. Indicates the primary number used by the manufacturer (individual, firm, corporation or Government activity), which controls the design and characteristics of the item by means of its engineering drawings, specifications standards, and inspection requirements to identify an item or range of items.

(3) STOCK NUMBER column. This column lists the NSN for the associated part number and

manufacturer identified in the PART NUMBER and CAGEC columns to the left.

(4) FIG. column. This column lists the number of the figure where the item is identified/located in Sections II and III.

(5) ITEM column. The item number is that number assigned to the item as it appears in the figure referenced in the adjacent figure number column.

c. FIGURE AND ITEM NUMBER INDEX.

(1) FIG. column. This column lists the number of the figure where the item is identified/located in Sections II and III.

(2) ITEM column. The item number is that number assigned to the item as it appears in the figure referenced in the adjacent figure number column.

(3) STOCK NUMBER column. This column lists the NSN for the item.

(4) CAGEC column. The Commercial and Government Entity (CAGEC) Code (C) is a 5 digit alphanumeric code used to identify the manufacturer, distributor or Government agency, etc., that supplies the item.

(5) PART NUMBER column. Indicates the primary number used by the manufacturer (individual, firm, corporation or Government activity), which controls the design and characteristics of the item by means of its engineering drawings, specifications standards and inspection requirements to identify an item or range of items.

**5. Special Information.**

Use the following subparagraphs as applicable:

a. USABLE ON CODE. The usable on code appears in the lower left corner of the Description Column heading. Usable on codes are shown as UOC: in the Description Column (justified left) on the first line following applicable item description/nomenclature. Uncoded items are applicable to all models. Identification of the usable on codes used in the RPSTL are:

<u>Code</u>	<u>Used On</u>
APC	M113A3
AP1	M981A3
AP2	M1064A3
AP3	M1068A3
AP5	M577A3
AP6	M1059A3
AP7	M901A3

b. **FABRICATION INSTRUCTIONS.** Bulk materials required to manufacture items are listed in the Bulk Material Functional Group of this RPSTL. Part numbers for bulk materials are also referenced in the description column of the line item entry for the item to be manufactured/fabricated. Detailed fabrication instructions for items source coded to be manufactured or fabricated are found in TM 9-2350-277-20P.

c. **ASSEMBLY INSTRUCTION.** Detailed assembly instructions for items source coded to be assembled from component spare/repair parts are found in TM 92350-277-20-1 and 20-2, and TM 9-2350-277-34. Items that make up the assembly are listed immediately following the assembly item entry or reference is made to an applicable figure.

d. **KITS.** Line item entries for repair parts kits appear in group 9401 in Section II.

e. **INDEX NUMBERS.** Items which have the word BULK in the figure column will have an index number shown in the item number column. This index number is a cross-reference between the National Stock Number/Part Number Index and the bulk material list in Section II.

f. **ASSOCIATED PUBLICATIONS.** The publications listed below pertain to the Personnel Carriers M113A3, M981A3, M1064A3, M1068A3, M577A3, M1059A3, and M901A3 vehicles and their Components:

<b>Publication</b>	<b>Short Title</b>
LO 9-2350-277-12	Lubrication Order; M113A3 FOV
TM 9-2350-277-10	Operator's Manual; M113A3 FOV
TM 9-2350-277-20-1	Unit Maintenance; M113A3 FOV
TM 9-2350-277-20-2	Unit Maintenance; M 113A3 FOV
TM 9-2350-277-34	DS/GS Maintenance; M 113A3 FOV
TM 9-2520-238-34	DS/GS Maintenance (Components)
TM 9-2520-238-34P	Component RPSTL
TM 9-2520-272-34	DS/GS Maintenance; Transmission
TM 9-2520-272-34P	DS/GS RPSTL; Transmission

TM 9-2815-205-34	DS/GS Maintenance; Engine
TM 9-2815-205-34P	DS/GS RPSTL; Engine
TM 9-2920-257-30&P	DS Maintenance/RPSTI; Generator (200Amp)
TM 9-6115-596-14 (AP5)	Unit/DS/GS Maintenance Generator Set, Gasoline Driven
TM 9-6115-596-14 (AP5)	Unit/DS/GS RPSTL; Generator Set, Gasoline Driven

## 6. How to Locate Repair Parts

a. *When National Stock Number or Part Number is Not Known.*

(1) First. Using the table of contents, determine the assembly group or subassembly group to which the item belongs. This is necessary since figures are prepared for assembly groups and subassembly groups, and listings are divided into the same groups.

(2) Second. Find the figure covering the assembly group or subassembly group to which the item belongs.

(3) Third. Identify the item on the figure and use the Figure and Item Number Index to find the NSN.

b. *When National Stock Number or Part Number is Known.*

(1) First. Using the National Stock Number or the Part Number Index, find the pertinent National Stock Number or part Number. The NSN index is in National Item Identification Number (NIIN) sequence (see 4.a(1)). The part numbers in the Part Number index are listed in ascending alphanumeric sequence (see 4.b). Both indexes cross-reference you to the illustration/figure and item number of the item you are looking for.

(2) Second. Turn to the figure and item number, verify that the item is the one you're looking for, then locate the item number in the repair parts list for the figure.

## 7. Abbreviations

For standard abbreviations see MIL-STD-12D, Military Standard Abbreviations for Use On Drawings, Specifications, Standards and In Technical Documents.

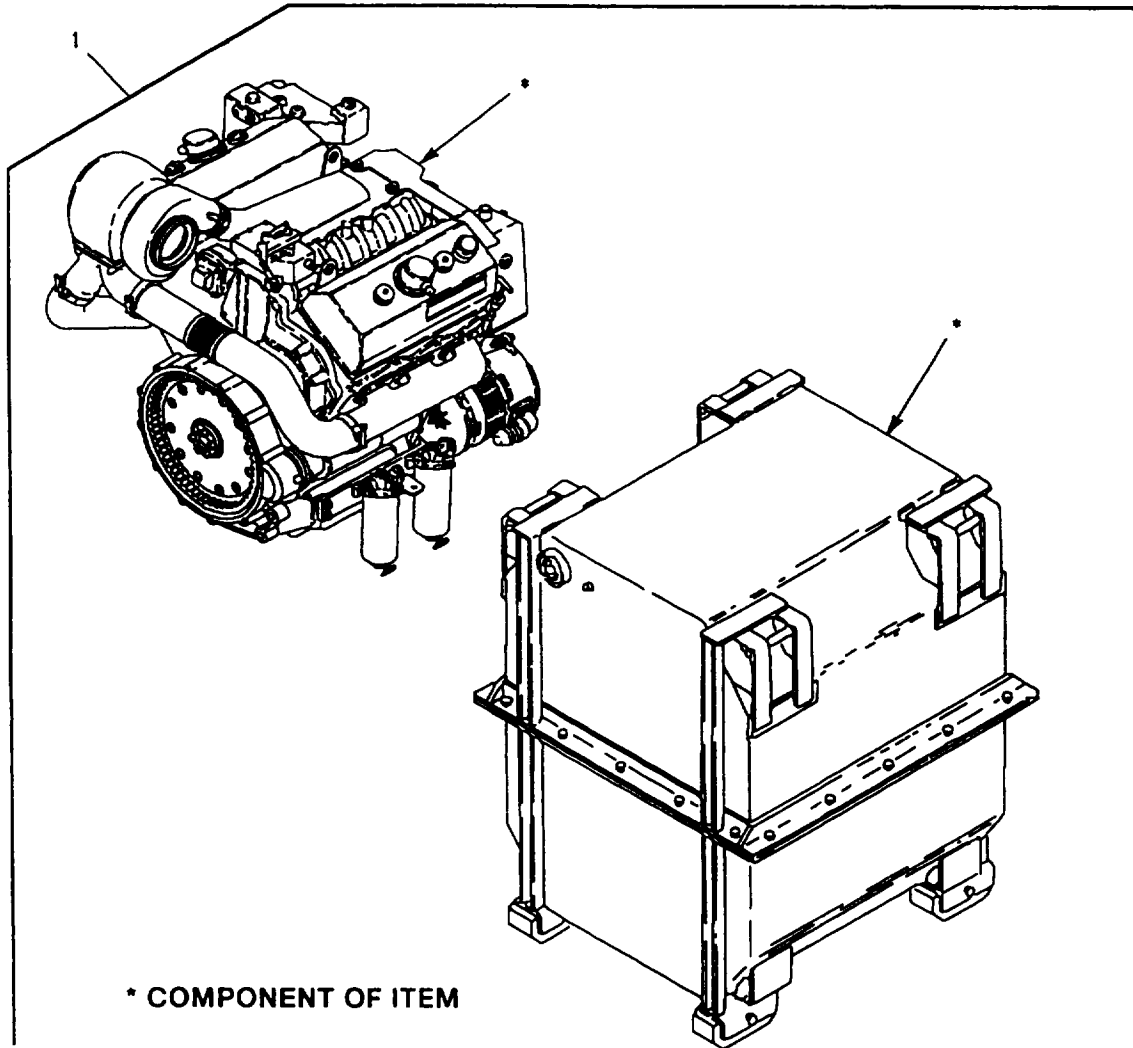


Figure 1. Engine and Container

SECTION II

TM 9-2350-277-24P

(1) ITEM NO	(2) SMR CODE	(3) CAGE	(4) PART NUMBER	(5) DESCRIPTION AND USABLE ON CODE (UOC)	(6) QTY
1	PAFHD	19207	5705597	<p>GROUP 01 ENGINE            GROUP 0100 ENGINE ASSEMBLY            FIG. 1 ENGINE AND CONTAINER</p> <p>ENGINE, W CONTAINER REFER TO TM9-2815-205-34P FOR            COMPONENT PARTS OTHER THAN UNIT MAINTENANCE WHICH            ARE LISTED IN THIS MANUAL .....</p> <p>END OF FIGURE</p>	1

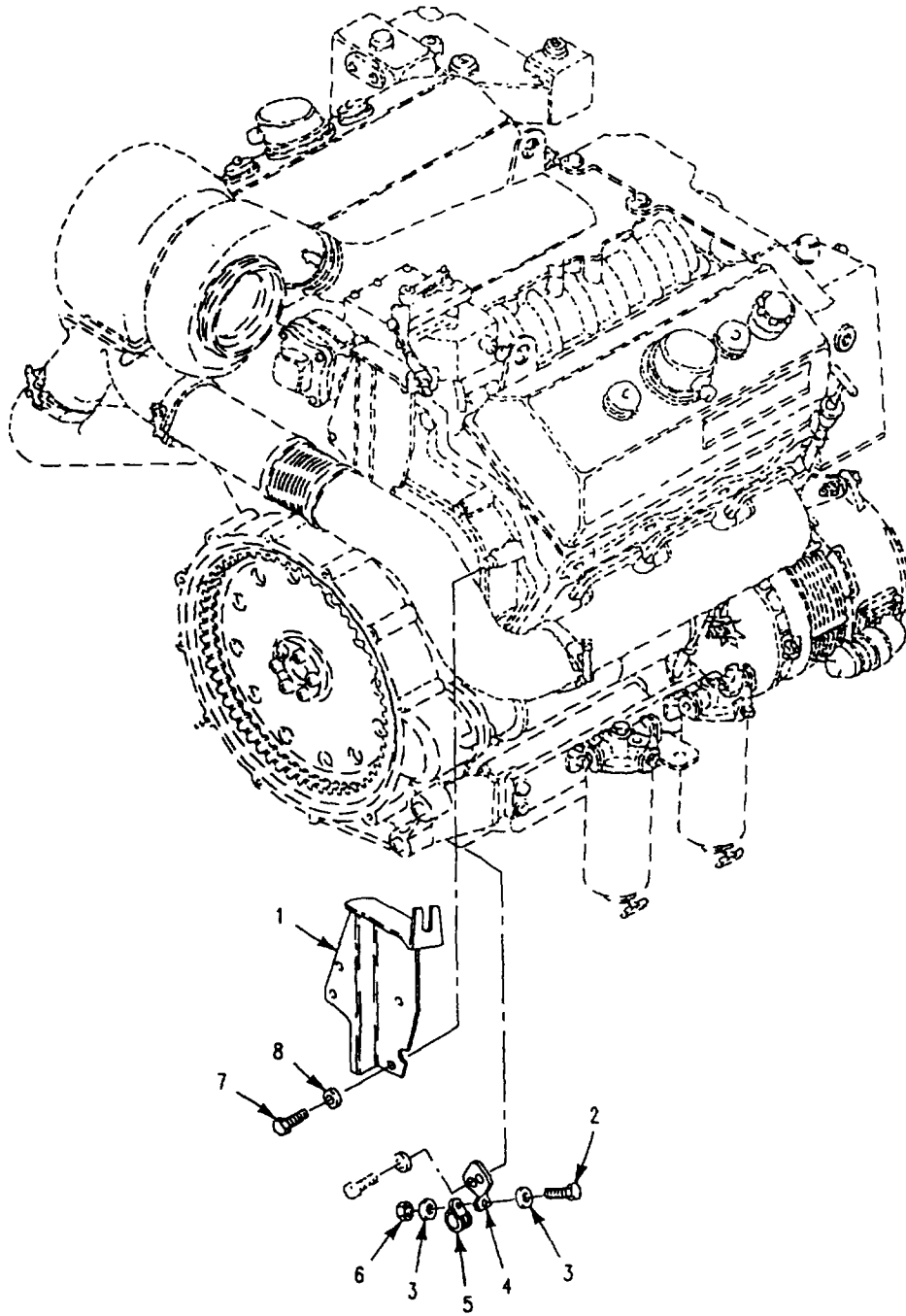


Figure 2. TV Modulator Cable Bracket and Attaching Hardware

SECTION II

TM 9-2350-277-24P

(1) ITEM NO	(2) SMR CODE	(3) CAGE	(4) PART NUMBER	(5) DESCRIPTION AND USABLE ON CODE (UOC)	(6) QTY
GROUP 0100 ENGINE ASSEMBLY CONTINUED FIG. 2 TV MODULATOR CABLE BRACKET AND ATTACHING HARDWARE					
1	PAFZZ	19207	12313452	BRACKET, CABLE, MODUL.....	1
2	PAOZZ	96906	MS35207-265	SCREW, MACHINE .....	2
3	PAOZZ	96906	MS27183-8	WASHER, FLAT .....	2
4	PAFZZ	19207	12354868	BRACKET, ANGLE.....	1
5	PAOZZ	96906	MS21919WDG28	CLAMP, LOOP.....	1
6	PAOZZ	96906	MS21044N3	NUT, SELF-LOCKING, HE .....	1
7	PAFZZ	96906	MS90725-109	SCREW, CAP HEXAGON H .....	1
8	PAOZZ	96906	MS27183-18	WASHER, FLAT.....	2
END OF FIGURE					

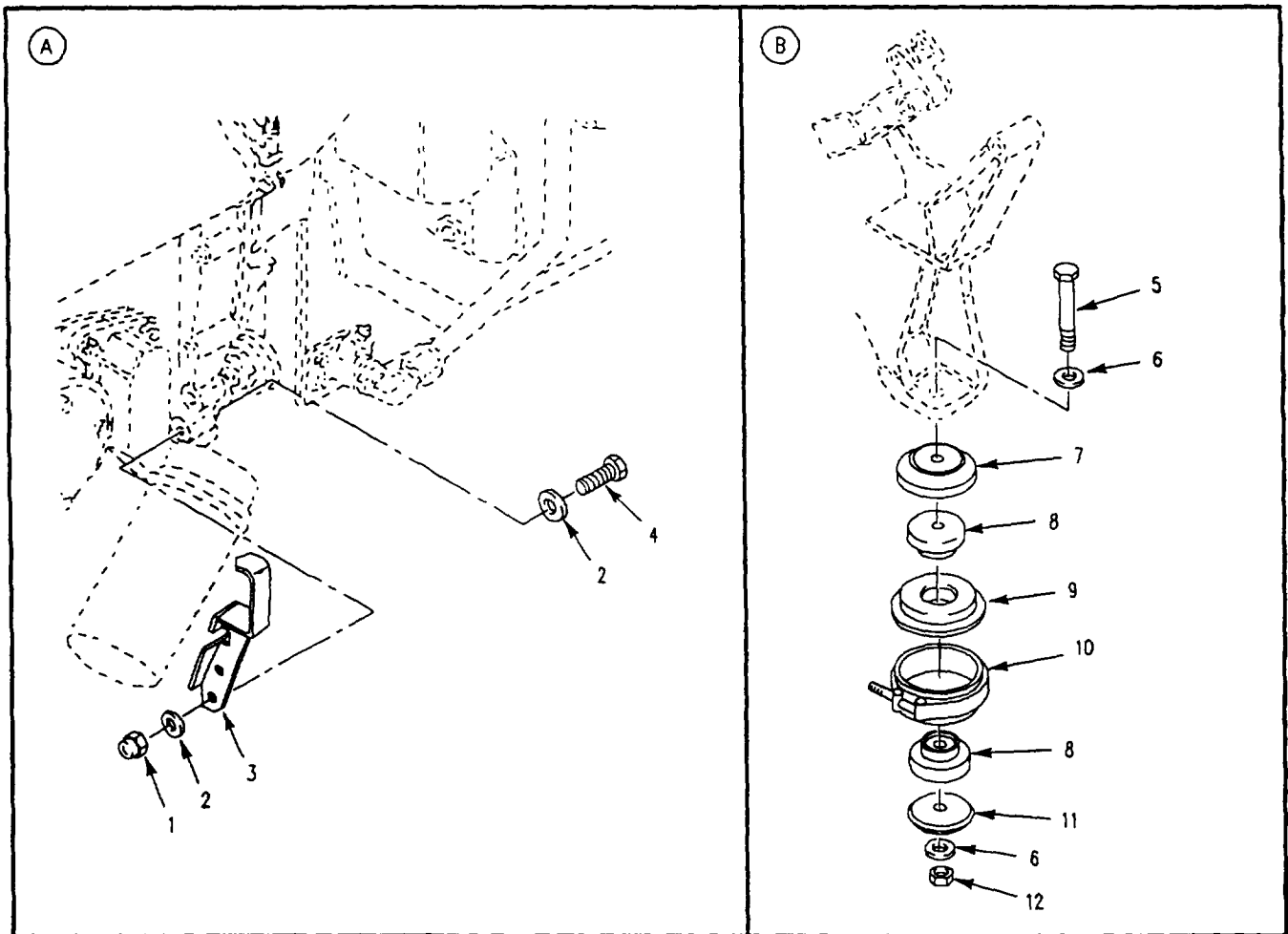
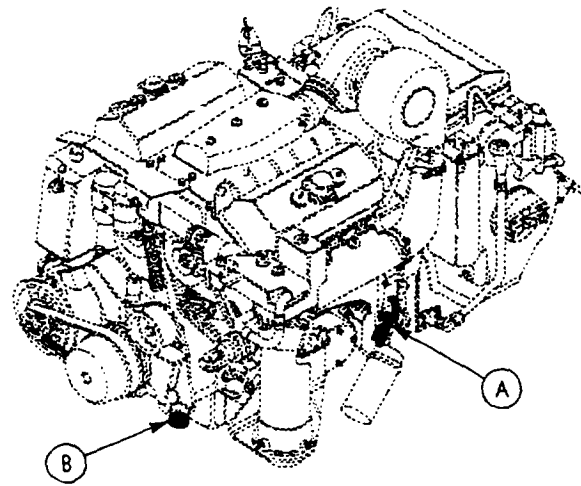


Figure 3. Engine Mounting Brackets and Engine Mounts



SECTION II

TM 9-2350-277-24P

(1) ITEM NO	(2) SMR CODE	(3) CAGE	(4) PART NUMBER	(5) DESCRIPTION AND USABLE ON CODE (UOC)	(6) QTY
GROUP 0100 ENGINE ASSEMBLY CONTINUED FIG. 3 ENGINE MOUNTING BRACKETS AND ENGINE MOUNTS					
1	PAOZZ	96906	MS51922-57	NUT, SELF-LOCKING, HE .....	2
2	PAFZZ	96906	MS27183-23	WASHER, FLAT.....	4
3	PAOZZ	19207	12358541	BRACKET, MOUNTING.....	1
4	PAFZZ	80204	B1821BH075C325N	SCREW, CAP, HEXAGON H .....	2
5	PAOZZ	80204	B1821BH063C600N	SCREW, CAP, HEXAGON H .....	2
6	PAOZZ	96906	MS27183-21	WASHER, FLAT.....	4
7	PAOZZ	19207	12313346	WASHER, FLAT.....	2
8	PAOZZ	19207	10863416-1	MOUNT, RESILIENT.....	4
9	PAOZZ	19207	12313343	BLOCK ENGINE MOUNT .....	2
10	PAOZZ	96906	MS27114-18R	COUPLING, CLAMP, GROO .....	2
11	PAOZZ	19207	10861316-1	WASHER, CONVEX .....	2
12	PAOZZ	96906	MS51922-49	NUT, SELF-LOCKING, HE .....	2
END OF FIGURE					

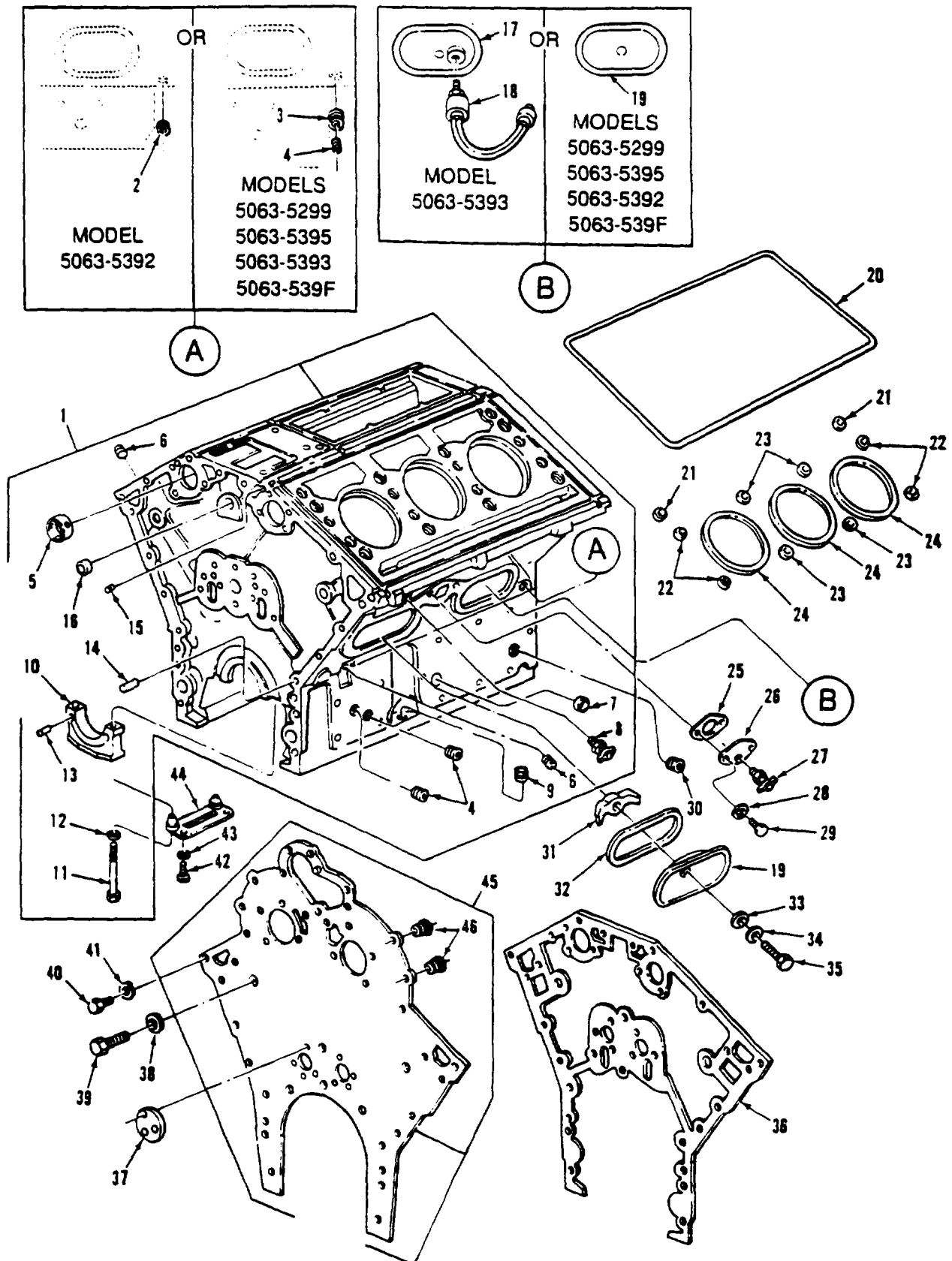


Figure 4. Cylinder Block Assembly, End Plate, and Related Parts

SECTION II

TM 9-2350-277-24P

(1) ITEM NO	(2) SMR CODE	(3) CAGE	(4) PART NUMBER	(5) DESCRIPTION AND USABLE ON CODE (UOC)	(6) QTY
18	PAOZZ	19207	12258932-5	<p>GROUP 0101 CRANKCASE, BLOCK, CYLINDER HEAD FIG. 4 CYLINDER BLOCK ASSEMBLY, END PLATE, AND RELATED PARTS</p> <p>TRANSMITTER, PRESSUR TRANSDUCER .....</p> <p>END OF FIGURE</p>	1