

**DIRECT SUPPORT, AND GENERAL SUPPORT MAINTENANCE
REPAIR PARTS AND SPECIAL TOOLS LIST
(INCLUDING DEPOT MAINTENANCE REPAIR PARTS AND SPEICAL TOOLS LIST)**

FOR

**RIGHT ANGLE DRIVE, COOLING FAN
M113A1 FOV, M113A2 FOV (2990-00-712-1280)
M113A3 FOV (3010-01-318-5670)**

**GEARCASE, TRANSFER
M548, M548A1 (2520-01-047-8613)
SERVICE GEARCASE (2520-01-087-0156)
M113A1 FOV (2520-00-572-8605)
M113A2 FOV (100 AMP GENERATOR), (2520-01-061-5570)
M113A1 FOV, M113A2 FOV (200 AMP GENERATOR), (2520-01-362-8589)**

**DRIVE ASSEMBLY, FINAL
M113A2 FOV, M113A3 FOV (2520-01-061-5766)
M548, M548A1 (2520-01-067-8933)**

**DIFFERENTIAL, STEERING CONTROL
M113A1 FOV, M113A2 FOV, M548, M548A1 (2520-00-714-6135)**

**BRAKE, SINGLE DISK
M113A1 FOV, M113A2 FOV, M548, M548A1 (2530-00-088-9866)**

**MASTER CYLINDER, HYDRAULIC BRAKE
M113A1 FOV, M113A2 FOV, M548, M548A1 (2530-00-679-9169)**

This publication supersedes TM 9-2520-238-34P, dated October 1992.

DISTRIBUTION STATEMENT A: Approved for public release; distribution is unlimited.

HEADQUARTERS, DEPARTMENT OF THE ARMY

31 MAY 2001

**DIRECT SUPPORT, AND GENERAL SUPPORT MAINTENANCE
REPAIR PARTS AND SPECIAL TOOLS LIST
(INCLUDING DEPOT MAINTENANCE REPAIR PARTS AND SPECIAL TOOLS LIST)**

FOR

**RIGHT ANGLE DRIVE, COOLING FAN
M113A1 FOV, M113A2 FOV (2990-00-712-1280)
M113A3 FOV (3010-01-318-5670)**

**GEARCASE, TRANSFER
M548, M548A1 (2520-01-047-8613)
SERVICE GEARCASE (2520-01-087-0156)
M113A1 FOV (2520-00-572-8605)
M113A2 FOV (100 AMP GENERATOR), (2520-01-061-5570)
M113A1 FOV, M113A2 FOV (200 AMP GENERATOR), (2520-01-362-8589)**

**DRIVE ASSEMBLY, FINAL
M113A2 FOV, M113A3 FOV (2520-01-061-5766)
M548, M548A1 (2520-01-067-8933)**

**DIFFERENTIAL, STEERING CONTROL
M113A1 FOV, M113A2 FOV, M548, M548A1 (2520-00-714-6135)**

**BRAKE, SINGLE DISK
M113A1 FOV, M113A2 FOV, M548, M548A1 (2530-00-088-9866)**

**MASTER CYLINDER, HYDRAULIC BRAKE
M113A1 FOV, M113A2 FOV, M548, M548A1 (2530-00-679-9169)**

CURRENT AS OF MAY 2001

REPORTING ERRORS AND RECOMMENDING IMPROVEMENTS

You can help improve this publication. If you find any mistakes or if you know of a way to improve the procedures, please let us know. Submit your DA Form 2028 (Recommended Changes to Publications and Blank Forms), through the Internet, on the Army Electronic Product Support (AEPS) website. The Internet address is <http://aeeps.ria.army.mil>. If you need a password, scroll down and click on "ACCESS REQUEST FORM". The DA Form 2028 is located in the ONLINE FORMS PROCESSING section of the AEPS. Fill out the form and click on SUBMIT. Using this form on the AEPS will enable us to respond quicker to your comments and better manage the DA Form 2028 program. You may also mail, fax or E-mail your letter, DA Form 2028 direct to: AMSTA-LC-CI/TECH PUBS, TACOM-RI, 1 Rock Island Arsenal, Rock Island, IL 61299-7630. The email address is TACOM-TECH-PUBS@ria.army.mil. The fax number is DSN 793-0726 or Commercial (309) 782-0726.

DISTRIBUTION STATEMENT A: Approved for public release; distribution is unlimited.

This publication supersedes TM 9-2520-238-34P, dated October 1992.

TABLE OF CONTENTS

	<u>PAGE</u>	<u>ILLUS FIGURE</u>
SECTION I INTRODUCTION.....	1	
SECTION II REPAIR PARTS LIST		
Group 05 COOLING SYSTEM		
0505 Right Angle Drive, Cooling Fan.....	1-1	1
0505 Deleted	2-1	2
0505 Right Angle Drive, Cooling Fan.....	3-1	3
Group 08 TRANSFER AND FINAL DRIVE ASSEMBLIES		
0801 Transfer Gearcase	4-1	4
0801 Transfer Gearcase	5-1	5
0801 Transfer Gearcase	6-1	6
0801 Transfer Gearcase	7-1	7
0801 Transfer Gearcase	8-1	8
0801 Transfer Gearcase	9-1	9
0801 Deleted	10-1	10
0801 Deleted	11-1	11
0801 Transfer Gearcase	12-1	12
0801 Transfer Gearcase	13-1	13
0801 Final Drive Assembly.....	14-1	14
0801 Final Drive Assembly.....	15-1	15
Group 11 REAR AXEL		
1124 Differential Steering Control	16-1	16
1124 Differential Steering Control	17-1	17
1124 Differential Steering Control	18-1	18
1124 Differential Steering Control	19-1	19
1124 Steering Unit Assembly.....	20-1	20
1124 Right Angle Gearbox, Differential.....	21-1	21
Group 14 STEERING		
1403 Steering Brakes, Master Brake Cylinder	22-1	22
1403 Brake, Single Disk, Pivot	23-1	23
Group 94 REPAIR KITS		
9401 Kits.....	KITS-1	
SECTION III SPECIAL TOOLS LIST		
Group 26 TOOLS AND TEST EQUIPMENT		
2604 Unit Maintenance Special Tools.....	24-1	24
SECTION IV CROSS REFERENCE INDEXES		
NATIONAL STOCK NUMBER INDEX.....	I-1	
PART NUMBER INDEX.....	I-5	

**DIRECT SUPPORT AND
GENERAL SUPPORT MAINTENANCE
REPAIR PARTS AND SPECIAL TOOLS LIST
(INCLUDING DEPOT MAINTENANCE REPAIR PARTS AND SPECIAL TOOLS LIST)**

Section I. INTRODUCTION

1. Scope

This RPSTL lists and authorizes spares and repair parts; special tools; Special Test, Measurement, and Diagnostic Equipment (TMDE); and other special support equipment required for performance of Unit Maintenance, Direct Support and General Support Maintenance of transfer gearcases and transfer transmission, differential and drive, pivot steer brake single disk, pivot steer hydraulic master cylinder, cooling fan angle drive, and final drive and output drive assemblies. This RPSTL authorizes the requisitioning, issue, and disposition of spares, repair parts and special tools as indicated by the Source, Maintenance, and Recoverability (SMR) codes.

2. General

In addition to Section I, Introduction, this Repair Parts and Special Tools List is divided into the following sections:

a. Section II. Repair Parts List. A list of spares and repair parts authorized by this RPSTL for use in the performance of maintenance. The list also includes parts, which must be removed for replacement of the authorized parts. Parts lists are composed of functional groups in ascending alphanumeric sequence, with the parts in each group listed in ascending figure and item number sequence. Bulk materials are listed in item name sequence. Repair kits are listed separately in their own functional group within Section II. Repair parts for repairable special tools are also listed in this section. Items listed are shown on the associated illustration(s)/figure(s).

b. Section III. Special Tools List. A list of special tools, special TMDE and other special support equipment authorized by this RPSTL (as indicated by Basis of Issue (BOI) information in DESCRIPTION AND USABLE ON CODE columns) for the performance of maintenance.

c. Section IV. Cross-reference Indexes. A list, in National Item Identification Number (NIIN) sequence, of all National stock numbered items appearing in the listing, followed by a list in alphanumeric sequence of all part numbers appearing in the listings. National stock numbers and part numbers are cross-referenced to each illustration figure and item number appearance.

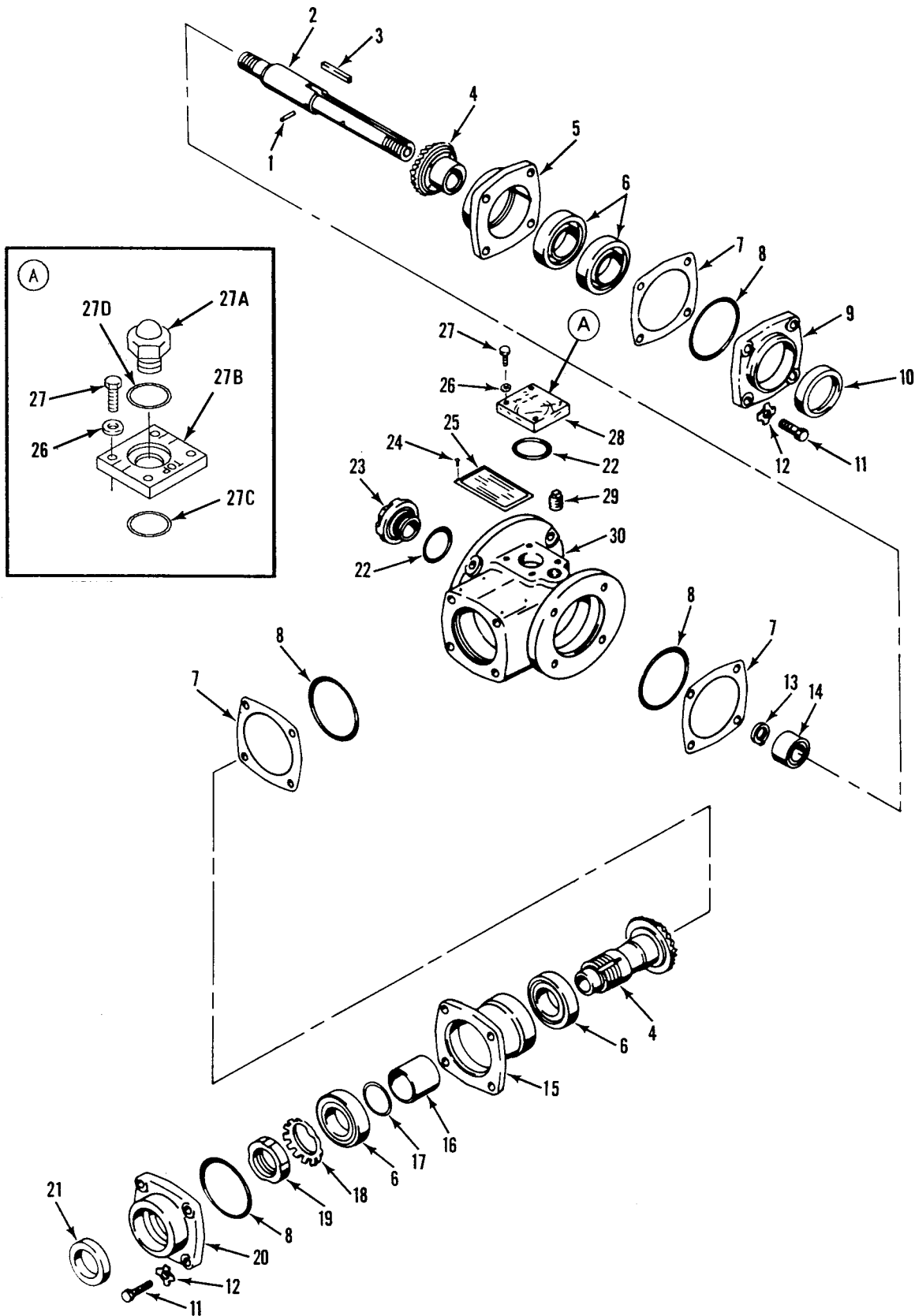


Figure 1. Right Angle Drive, Cooling Fan – 10863320, 10863320-1

SECTION II

TM 9-2520-238-34P

(1) ITEM NO	(2) SMR	(3) NSN	(4) CAGE	(5) PART NUMBER	(6) DESCRIPTION AND USABLE ON CODE (UOC)	(7) QTY
GROUP 05 COOLING SYSTEM GROUP 0505 FAN ASSEMBLY FIG. 1 RIGHT ANGLE DRIVE, COOLING FAN 10863320, 10863320-1						
1	PAFZZ	5315-00-814-3532	96906	MS16562-8	PIN, SPRING.....	1
2	PAFZZ	3040-00-673-3170	19207	10863328	SHAFT, SHOULDERED.....	1
3	PAFZZ	5315-00-050-5682	21450	505682	KEY, MACHINE.....	1
4	PAFZZ	3020-00-832-0175	80212	11661492	GEAR SET, BEVEL, MATC.....	1
5	PAFZZ	3130-00-493-9039	19207	10886454	HOUSING, BEARING UNI.....	1
6	PAFZZ	3110-00-020-2283	19207	10863494	BEARING, BALL, DUPLEX.....	2
7	PAFZZ	5365-00-857-2752	19207	10886452	SHIM LAMINATE.....	3
8	PAFZZ	5330-00-882-4963	96906	MS28775-149	PACKING, PREFORMED.....	4
9	PAFZZ	3130-00-781-8186	19207	10886456	HOUSING, BEARING UNI.....	1
10	PAFZZ	5330-00-806-1028	19207	10875115	SEAL, PLAIN ENCASED.....	1
11	PAFZZ	5306-00-226-4824	80204	B1821BH031C125N	SCREW, CAP, HEXAGON H.....	8
12	PAFZZ	5310-00-655-9669	19207	8756978	WASHER, KEY.....	8
13	PAFZZ	5365-00-803-7303	96906	MS16624-1075	RING, RETAINING.....	1
14	PAFZZ	3110-00-112-6012	21450	713888	BEARING, ROLLER, NEED.....	1
15	PAFZZ	3130-00-493-9032	19207	10886453	HOUSING, BEARING UNI.....	1
16	PAFZZ	5365-00-781-8188	19207	10863327	SPACER, SLEEVE.....	1
17	PAFZZ	5365-00-010-2996	19207	10863326	SHIM LAMINATE.....	1
18	PAFZZ	5310-00-186-1032	96906	MS19070-072	WASHER, KEY.....	1
19	PAFZZ	5310-00-507-3623	96906	MS19068-072	NUT, PLAIN, ROUND.....	1
20	PAFZZ	3130-00-781-8192	19207	10886455	HOUSING, BEARING UNI.....	1
21	PAFZZ	5330-00-887-1337	19207	10875114	SEAL, PLAIN ENCASED.....	1
22	PAOZZ	5330-00-702-1048	96906	MS28775-126	PACKING, PREFORMED USED ON 10863320-1.....	1
22	XBOZZ	5330-00-702-1048	96906	MS28775-126	PACKING, PREFORMED USED ON 10863320.	2
23	PAOZZ	5365-00-992-9265	19207	10863491	CAP, VENTILATING FAN.....	1
24	PAFZZ	5305-00-253-5603	96906	MS21318-1	SCREW, DRIVE.....	4
25	PAFZZ	9905-00-690-2116	19207	8756610	PLATE, IDENTIFICATIO.....	1
26	PAOZZ	5310-00-596-1766	96906	MS20002C4	WASHER, RECESSED USED ON 10863320-1.	4
26	PAOZZ	5310-00-809-4058	96906	MS27183-10	WASHER, FLAT USED ON 10863320.....	4
27	PAOZZ	5305-00-068-0508	80204	B1821BH025C075N	SCREW, CAP, HEXAGON H USED ON 10863320.....	4
27	PAOZZ	5305-00-939-0577	96906	MS51095-308	SCREW, CAP, HEXAGON H USED ON 10863320-1.....	4
27A	PAOZZ		19207	12349867	INDICATOR, SIGHT, LIQ USED ON 10863320-1.....	1
27B	PAOZZ		19207	12349678	PLATE, MOUNTING USED ON 10863320-1..	1
27C	PAOZZ		81349	M83461/1-126	O-RING USED ON 10863320-1.....	1
27D	PAOZZ		81349	M83461/1-118	O-RING USED ON 10863320-1.....	1
28	PAOZZ	6680-00-678-6153	19207	8756947	COVER, INDICATOR USED ON 10863320...	1
29	PFOZZ	2835-01-126-4063	24617	444625	PLUG.....	1
30	PAFZZ	3040-00-781-8184	19207	10863486	HOUSING, MECHANICAL.....	1

END OF FIGURE

SECTION II

TM 9-2520-238-34P

(1)	(2)	(3)	(4)	(5)	(6)	(7)
ITEM	SMR	NSN	CAGE	PART	DESCRIPTION AND	QTY
NO				NUMBER	USABLE ON CODE (UOC)	

GROUP 0505 FAN ASSEMBLY CONTINUED
FIG. 2 DELETED

END OF FIGURE

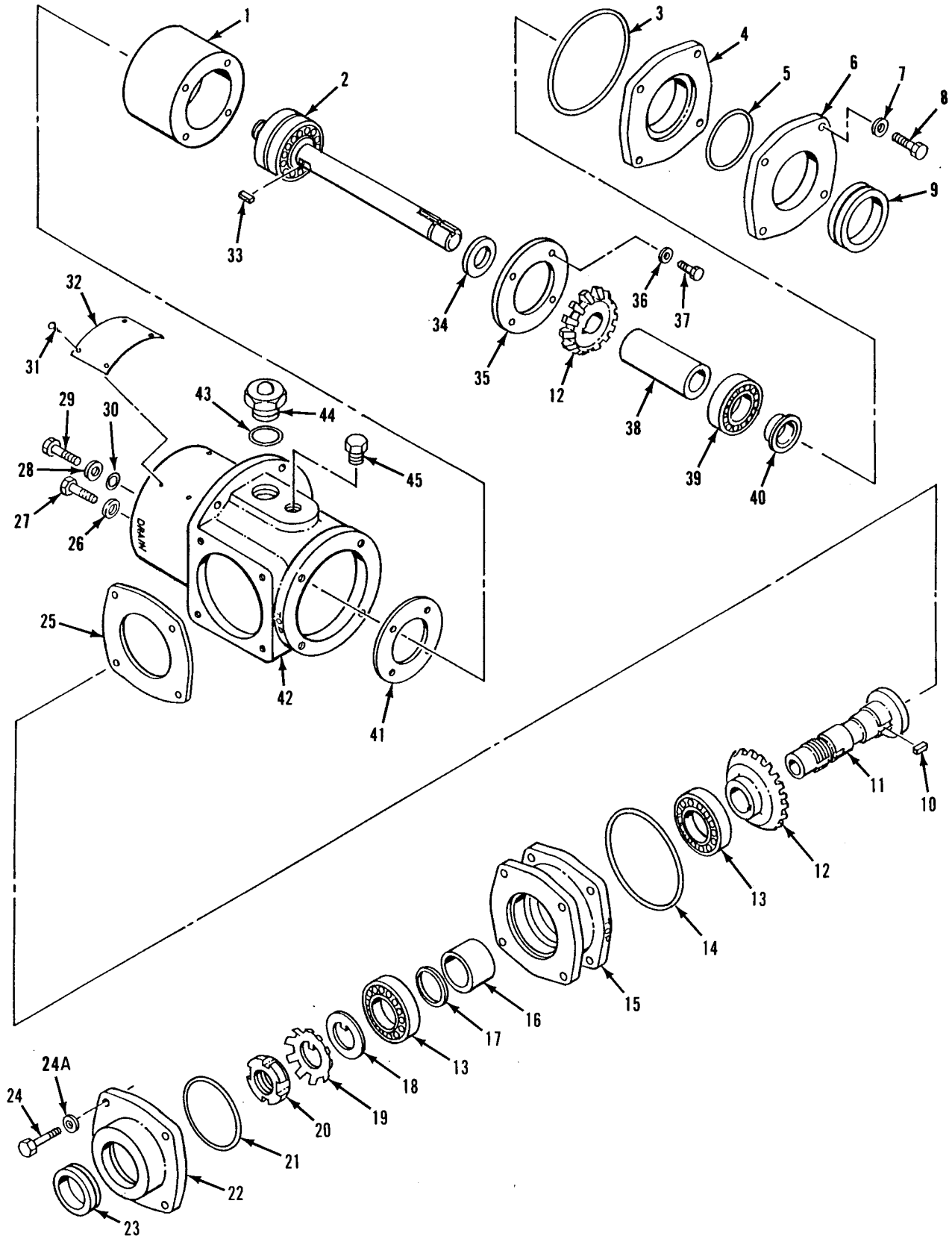


Figure 3. Right Angle Drive, Cooling Fan – 12349762-1

SECTION II

TM 9-2520-238-34P

SECTION II (1) ITEM NO	(2) SMR	(3) NSN	(4) CAGE	(5) PART NUMBER	(6) DESCRIPTION AND USABLE ON CODE (UOC)	(7) QTY
GROUP 0505 FAN ASSEMBLY CONTINUED FIG. 3 RIGHT ANGLE DRIVE, COOLING FAN 12349762-1						
1	PAFZZ	3110-01-258-0911	19207	12349773	HOUSING, BEARING, UNI.....	1
2	PAFZZ	3040-01-249-3327	19207	12354717	SHAFT AND BEARING, F.....	1
3	PAFZZ	5330-00-167-5139	81349	M83248/1-153	PACKING, PREFORMED.....	1
4	PAFZZ	3110-01-252-5361	19207	12349771	HOUSING, BEARING UNI.....	1
5	PAFZZ	5330-00-537-3888	81349	M83248/1-142	PACKING, PREFORMED.....	1
6	PAFZZ	5330-01-253-7165	19207	12349763	RING, RETAINING.....	1
7	PAFZZ	5310-00-877-5973	19200	10910174-2	WASHER, FLAT.....	4
8	PAFZZ	5306-00-226-4832	80204	B1821BH031C175N	BOLT, MACHINE.....	4
9	PAFZZ	5330-00-806-1028	19207	10875115	SEAL, PLAIN ENCASED.....	1
10	PAFZZ	5315-00-729-6987	96906	MS20066-227	KEY, MACHINE.....	1
11	PAFZZ	3040-01-249-3384	19207	12349734	SHAFT, SHOULDERED.....	1
12	PAFZZ	3020-01-248-5193	19207	12349790	GEAR SET, BEVEL, MATC.....	1
13	PAFZZ	3110-01-134-6946	60038	L68149/L68111	BEARING, ROLLER, TAPE.....	2
14	PAFZZ	5330-00-165-1955	81349	M83248/1-237	PACKING, PREFORMED.....	1
15	PAFZZ	3130-01-322-9669	19207	12349742-1	HOUSING, BEARING UNI.....	1
16	PAFZZ	5365-01-252-5351	19207	12349777	SPACER, SLEEVE.....	1
17	PAFZZ	5365-00-010-2996	19207	10863326	SHIM LAMINATE.....	1
18	PAFZZ	5310-01-253-0059	96906	MS21258C23	WASHER, KEY.....	1
19	PAFZZ	5310-00-186-1032	96906	MS19070-072	WASHER, KEY.....	1
20	PAFZZ	5310-00-507-3623	96906	MS19068-072	NUT, PLAIN, ROUND.....	1
21	PAFZZ	5330-00-167-5129	81349	M83248/1-148	PACKING, PREFORMED.....	1
22	PAFZZ	5330-01-324-2632	19207	12358762	RETAINER, OIL SEAL.....	1
23	PAFZZ	5330-00-887-1337	19207	10875114	SEAL, PLAIN ENCASED.....	1
24	PAFZZ	5306-00-226-4836	80204	B1821BH031C275N	BOLT, MACHINE.....	4
24A	PAFZZ	5310-00-167-0820	88044	AN960-516	WASHER, FLAT.....	4
25	PAFZZ	5365-01-252-8385	19207	12349746	SHIM, STOCK, LAMINATE.....	1
26	PAOZZ	5310-00-596-7599	96906	MS15795-514	WASHER, FLAT.....	1
27	PAOZZ	5305-01-155-4362	80204	B1821BH038C038N	SCREW, CAP, HEXAGON H.....	1
28	PAFZZ	5310-00-000-0079	19200	10910174-33	WASHER, FLAT.....	4
29	PAFZZ	5305-00-725-2317	80204	B1821BH038C150N	SCREW, CAP, HEXAGON H.....	4
30	PAFZH	5331-01-279-0345	52806	1/1-012	O-RING.....	4
31	PAFZZ	5305-00-253-5603	96906	MS21318-1	SCREW, DRIVE.....	4
32	MDFZZ		19207	12354910	PLATE, IDENTIFICATIO MAKE FROM METAL SHEET, P/N 3003H14.....	1
33	PAFZZ	5315-00-729-6989	96906	MS20066-230	KEY, MACHINE.....	1
34	PAFZZ	5310-01-253-5935	19207	12349740	WASHER, FLAT.....	1
35	PAFZZ	3110-01-257-3338	19207	12349741	PLATE, RETAINING, BEA.....	1
36	PAFZZ	5310-00-865-9513	19200	10910174-1	WASHER, FLAT.....	4
37	PAFZZ	5305-00-068-0508	80204	B1821BH025C075N	SCREW, CAP, HEXAGON H.....	4
38	PAFZZ	5365-01-252-9233	19207	12349778	SPACER, SLEEVE.....	1
39	PAFZZ	3110-01-253-9879	19207	12349864	BEARING, BALL, ANNULA.....	1
40	PAFZZ	3120-01-259-6401	19207	12349782	BEARING, PLAIN, SPHER.....	1
41	PAFZZ	5365-01-252-8386	19207	12349747	SHIM, STOCK, LAMINATE.....	1
42	XAFZZ		19207	12349781	HOUSING, GEARBOX, FAN.....	1
43	PAOZZ	5331-01-133-4718	81349	M83461/1-212	O-RING.....	1
44	PAOZZ	6680-01-246-0305	97484	MS50Z	INDICATOR, SIGHT, LIQ.....	1
45	PAOZZ	4730-00-702-5694	88044	AN933-3	PLUG, PIPE.....	1

END OF FIGURE

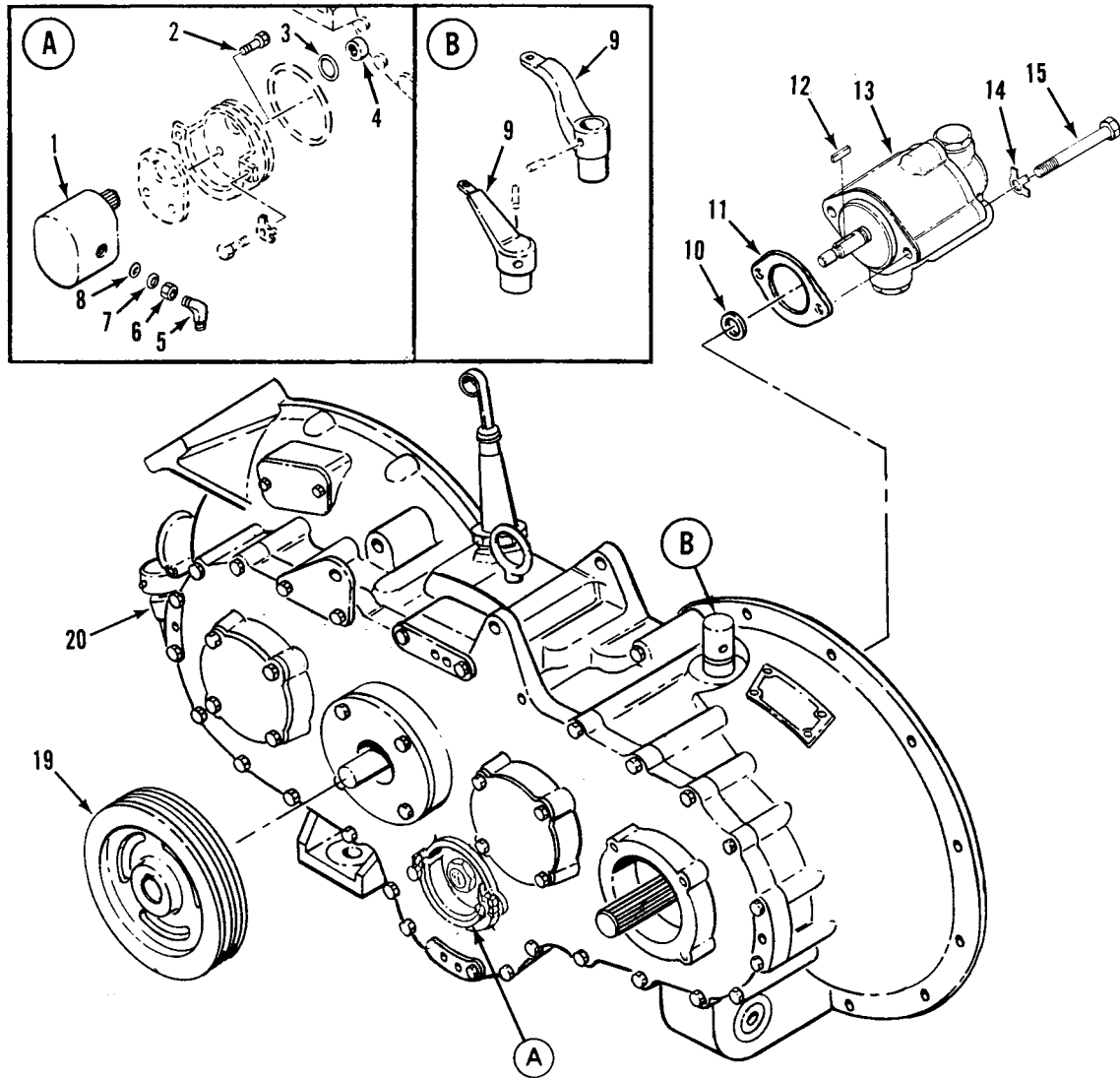


Figure 4. Transfer Gearcase – 10932770, 12253625, 12349527

SECTION II

TM 9-2520-238-34P

(1) ITEM NO	(2) SMR	(3) NSN	(4) CAGE	(5) PART NUMBER	(6) DESCRIPTION AND USABLE ON CODE (UOC)	(7) QTY
GROUP 08 TRANSFER AND FINAL DRIVE ASSEMBLIES						
GROUP 0801 POWER TRANSFER AND FINAL DRIVE ASSEMBLIES						
FIG. 4 TRANSFER GEARCASE						
10932770, 12253625, 12349527						
1	PAOZZ	4320-00-679-9159	19207	10861448	PUMP ASSEMBLY.....	1
2	PAOZZ	5305-00-543-5795	96906	MS24677-25	SCREW,CAP,SOCKET HE.....	4
3	PAOZZ	5365-00-803-7305	96906	MS16624-1062	RING,RETAINING PART OF KIT P/N 5703817.....	1
4	PAOZZ	3010-00-679-9224	19207	10861623	COUPLING, HYDRAULIC.....	1
5	PAOZZ	4730-00-970-1198	19207	10874783	ELBOW,TUBE.....	1
6	PAOZZ	5310-00-277-5083	88044	AN6289D6	NUT,PLAIN,HEXAGON USED ON 10932770..	1
7	PAOZZ	5330-00-246-6404	96906	MS28773-06	RETAINER,PACKING USED ON 10932770..	1
8	PAOZZ	5330-01-049-2226	19207	10875089	PACKING,PREFORMED PART OF KIT P/N 5703817.....	1
9	PAOZZ	3040-00-678-8394	19207	10932902	LEVER,REMOTE CONTRO USED ON 10932770.....	1
9	PAOZZ	5340-01-061-5569	19207	12253595	ARM,DISCONNECT,ENGI USED ON 12253625 & 12349527.....	1
10	PAOZZ	5365-00-341-3005	43952	D716	RING,RETAINING PART OF KIT P/N 5703817.....	1
11	PAOZZ	5330-00-678-6186	19207	10861592	GASKET PART OF KIT P/N 5703817.....	1
12	PAOZZ	5315-00-720-7038	96906	MS20066-184	KEY,MACHINE.....	1
13	PAOZZ	4320-01-047-8792	19207	12253184	PUMP,ROTARY.....	1
14	PAOZZ	5310-00-655-9667	19207	10861663	WASHER,KEY PART OF KIT P/N 5703817..	2
15	PAOZZ	5305-00-071-2064	80204	B1821BH044C450N	SCREW,CAP,HEXAGON H.....	2
16			00000	00000000	DELETED.....	0
17			00000	00000000	DELETED.....	0
18			00000	00000000	DELETED.....	0
19	PAFZZ	3020-01-060-2547	19207	12253526-2	PULLEY,GROOVE USED ON 12253625 & 12349527.....	1
19	PAFZZ	3020-01-125-2639	19207	12268939	PULLEY,GROOVE USED ON 10932770.....	1
20	PAFHH	2520-01-087-0156	19207	12268757	TRANSFER TRANSMISSI SEE FIGS. 5,6,7,AND 13.....	1

END OF FIGURE

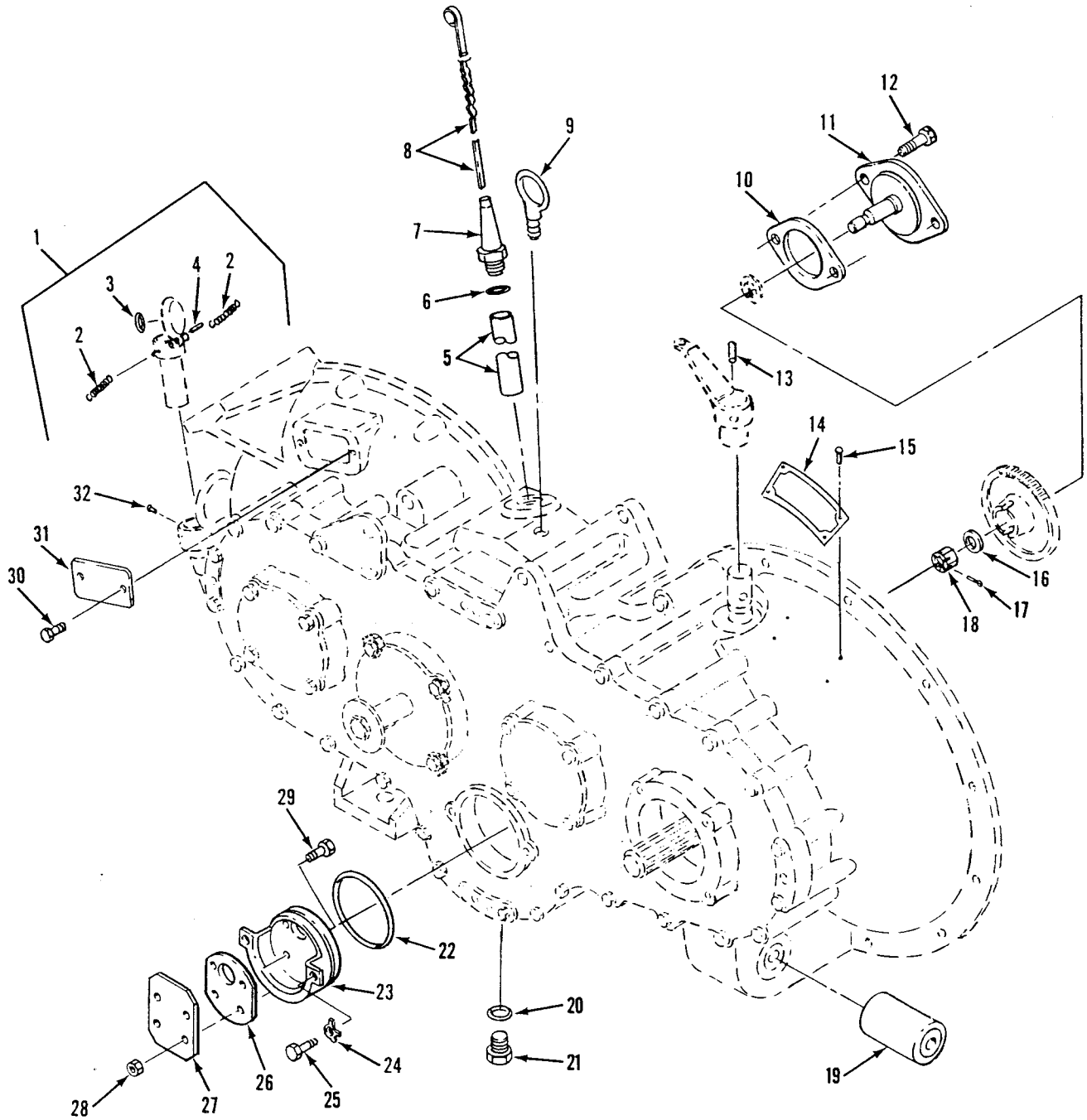


Figure 5. Transfer Gearcase - 12268757

SECTION II

TM 9-2520-238-34P

(1) ITEM NO	(2) SMR	(3) NSN	(4) CAGE	(5) PART NUMBER	(6) DESCRIPTION AND USABLE ON CODE (UOC)	(7) QTY
GROUP 0801 POWER TRANSFER AND FINAL DRIVE ASSEMBLIES CONTINUED FIG. 5 TRANSFER GEARCASE 12268757						
1	PAOZZ	2590-00-999-1997	19207	10890718	FILLER NECK.....	1
2	PAOZZ	5360-00-827-7077	19207	10886307	.SPRING,HELICAL,EXTE.....	2
3	PAOZZ	5330-00-579-7914	96906	MS28775-217	.PACKING,PREFORMED.....	1
4	PAOZZ	5315-01-009-7336	80205	NAS561-8-36	.PIN,SPRING.....	1
5	PAOZZ	5315-00-735-6099	19207	10932795	GUIDE,OIL LEVEL GAG.....	1
6	PAOZZ	5330-00-251-8839	96906	MS28778-12	PACKING,PREFORMED PART OF KIT,P/N 5703817.....	1
7	PAOZZ	2520-00-232-6023	19207	10949706	GUIDE,GAGE ROD.....	1
8	PAOZZ	6680-01-036-4426	19207	11598125	GAGE ROD,LIQUID LEV.....	1
9	PAOZZ	5306-00-880-9786	19207	10861669	BOLT,EYE.....	1
10	PAOZZ	5330-00-678-6186	19207	10861592	GASKET PART OF KIT,P/N 5703817.....	1
11	PAFZZ	8115-01-098-6725	19207	10861793	SHAFT,DUMMY.....	1
12	PAFZZ	5305-00-071-1788	80204	B1821BH044C125N	SCREW,CAP,HEXAGON H.....	2
13	PAOZZ	5315-00-999-2009	19207	10886333	PIN,GROOVED,HEADLES.....	1
14	PAOZZ	9905-00-690-2116	19207	8756610	PLATE,IDENTIFICATIO.....	1
15	PAOZZ	5305-00-253-5603	96906	MS21318-1	SCREW,DRIVE.....	4
16	PAOZZ	5310-00-809-5998	96906	MS27183-18	WASHER,FLAT.....	V 1
17	PAOZZ	5315-00-234-1856	96906	MS24665-155	PIN,COTTER.....	1
18	PAOZZ	5310-00-842-1490	96906	MS35692-37	NUT,PLAIN,SLOTTED,H.....	1
19	PAOZZ	5340-00-679-7998	19207	10861202	MOUNT,RESILIENT.....	1
20	PAOZZ	5330-00-579-3156	96906	MS28775-116	PACKING,PREFORMED PART OF KIT P/N 5703817.....	1
21	PAOZZ	5365-00-861-1403	19207	10890327	PLUG,MACHINE THREAD.....	1
22	PAOZZ	5330-00-194-3733	88044	AN6230-18	PACKING,PREFORMED PART OF KIT,P/N 5703817.....	1
23	PAOZZ	2540-00-999-2111	19207	10932936	BRACKET.....	1
24	PAOZZ	5310-00-655-9669	19207	8756978	WASHER,KEY PART OF KIT,P/N 5703817	2
25	PAOZZ	5306-00-225-8498	96906	MS90725-33	BOLT,MACHINE.....	2
26	PAOZZ	5330-00-679-9226	19207	10861591	GASKET PART OF KIT,P/N 5703817.....	1
27	PAFZZ	5340-01-098-6826	19207	10861732	COVER,ACCESS.....	1
28	PAFZZ	5310-00-902-6676	96906	MS21083N3	NUT,SELF-LOCKING,HE.....	4
29	PAFZZ	5305-00-993-1851	96906	MS35207-267	SCREW,MACHINE.....	4
30	PAOZZ	5305-00-068-0500	96906	MS90725-3	SCREW,CAP,HEXAGON H.....	2
31	PAOZZ	5340-00-999-1980	19207	10861617	COVER,ACCESS.....	1
32	PAOZZ	5320-00-721-9062	96906	MS20470AD6-10	RIVET,SOLID.....	1

END OF FIGURE