

TECHNICAL MANUAL

**UNIT, DIRECT SUPPORT, AND GENERAL SUPPORT
MAINTENANCE REPAIR PARTS AND
SPECIAL TOOLS LISTS**

**TRUCK TRACTOR, YARD-TYPE:
43,500 LB GVW, DED, 4 X 2**

**ARMY MODEL M878A1
(OTTAWA MODEL 50)**

(NSN 2320-01-121-2102)

This manual supersedes TM 9-2320-285-24P, 16 October 1985.

Approved for public release, distribution is unlimited

HEADQUARTERS, DEPARTMENT OF THE ARMY

JUNE 1992

**UNIT, DIRECT SUPPORT, AND GENERAL SUPPORT
MAINTENANCE REPAIR PARTS AND
SPECIAL TOOLS LISTS**

**TRUCK TRACTOR, YARD-TYPE:
43,500 LB GVW, DED, 4 X 2**

ARMY MODEL M878A1
(OTTAWA MODEL 50)

(NSN 2320-01-121-2102)

Current as of 22 November 1991

REPORTING ERRORS AND RECOMMENDING IMPROVEMENTS
You can help improve this manual. If you find any mistakes or if you know of a way to improve the procedures, please let us know. Mail your letter, DA Form 2028 (Recommended Changes to Publications and Blank Forms), or DA Form 2028-2, located in the back of this manual, direct to: Commander, U.S. Army Tank-Automotive Command, ATTN: AMSTA-MB, Warren, MI 48397-5000. A reply will be furnished to you.

Approved for public release; distribution is unlimited.

TABLE OF CONTENTS

	Page	Illus Fig
SECTION I. INTRODUCTION	1	
SECTION II. REPAIR PARTS LIST	1-1	
 GROUP 01 ENGINE		
0100 - ENGINE ASSEMBLY	1-1	
ENGINE MOUNTING	1-1	1
0106 - ENGINE LUBRICATION SYSTEM	2-1	
OIL SAMPLING KIT	2-1	2
EXTERNAL OIL FILTER	3-1	3
OIL FILTER ASSEMBLY	4-1	4
 GROUP 03 FUEL SYSTEM		
0304 - AIR CLEANER	5-1	
AIR CLEANER	5-1	5
0306 - TANKS, LINES, FITTINGS, HEADERS	6-1	
FUEL TANK	6-1	6
0309 - FUEL FILTERS	7-1	
FUEL FILTER AND STRAINER	7-1	7
0311 - ENGINE STARTING AIDS	8-1	
ETHER STARTING KIT	8-1	8

* This manual supersedes TM 9-2320-285-24P, dated 16 October 1985.

TABLE OF CONTENTS (Con't)

	Page	Illus Fig
0312 - ACCELERATOR, THROTTLE, OR CHOKE CONTROLS	9-1	
ACCELERATOR LINKAGE	9-1	9
ACCELERATOR PEDAL	10-1	10
GROUP 04 EXHAUST SYSTEM		
0401 - MUFFLER AND PIPES	11-1	
VERTICAL MUFFLER	11-1	11
EXHAUST OUTLET	12-1	12
GROUP 05 COOLING SYSTEM		
0501 - RADIATOR, EVAPORATIVE COOLER, OR HEAT EXCHANGER	13-1	
RADIATOR ASSEMBLY	13-1	13
RADIATOR ATTACHING HARDWARE	14-1	14
0502 - COWLING, DEFLECTORS, AIR DUCTS, SHROUDS, ETC	15-1	
FAN SHROUD	15-1	15
0503 - WATER MANIFOLD, HEADERS, THERMOSTATS, AND HOUSING GASKET ...	16-1	
RADIATOR HOSES	16-1	16
COOLANT FILTER INSTALLATION	17-1	17
0505 - FAN ASSEMBLY	18-1	
FAN CLUTCH ASSEMBLY	18-1	18
FAN CLUTCH CONTROL SYSTEM	19-1	19
GROUP 06 ELECTRICAL SYSTEM		
0601 - GENERATOR, ALTERNATOR	20-1	
ALTERNATOR INSTALLATION	20-1	20
ALTERNATOR	21-1	21
0603 - STARTING MOTOR	22-1	
STARTER	22-1	22
70 AMP BREAKER AND SOLENOID	23-1	23
0607 - INSTRUMENT OR ENGINE CONTROL PANEL	24-1	
INSTRUMENT PANEL	24-1	24
0608 - MISCELLANEOUS ITEMS	25-1	
24-VOLT INVERTER AND WIRING	25-1	25
TURN SIGNAL SWITCHES	26-1	26
KYSOR WARNING, MISCELLANEOUS	27-1	27
WATER LEVEL WARNING KIT INSTALLATION	28-1	28
WATER LEVEL WARNING KIT	29-1	29
0609 - LIGHTS	30-1	
CAB DOMELIGHT	30-1	30
FRONT AND REAR FLOODLIGHTS	31-1	31
HEADLIGHT ASSEMBLY	32-1	32
CLEARANCE LIGHTS	33-1	33
FRONT TURN LIGHTS	34-1	34
TAILLIGHTS	35-1	35
SEPARATE LIGHTING CABLE	36-1	36
TRAILER CONNECTION INSTALLATION	37-1	37
0610 - SENDING UNITS AND WARNING SWITCHES	38-1	
WATER TEMPERATURE SENDER	38-1	38
FUEL LEVEL SENDER	39-1	39
THERMAL SWITCH	40-1	40

TABLE OF CONTENTS (Con't)

	Page	Illus Fig
0611 - HORN SIREN.....	41-1	
HORN BUTTON ASSEMBLY	41-1	41
HORN AND RELAY.....	42-1	42
0612 - BATTERIES STORAGE.....	43-1	
BATTERY	43-1	43
0613 - HULL OR CHASSIS WIRING HARNESS	44-1	
WIRING HARNESS.....	44-1	44
 GROUP 07 TRANSMISSION		
0708 - TORQUE CONVERTER OR FLUID COUPLING.....	45-1	
TRANSMISSION.....	45-1	45
0710 - TRANSMISSION ASSEMBLY AND ASSOCIATED PARTS	46-1	
CABLE AND MODULATION ASSEMBLY	46-1	46
TRANSMISSION AND RELATED PARTS.....	47-1	47
TRANSMISSION MOUNT ASSEMBLY	48-1	48
GEARSHIFT	49-1	49
HOUSING, OIL FILTER, AND OIL PAN.....	50-1	50
SHIFT LOCKOUT.....	51-1	51
GEAR UNIT AND MAIN SHAFT.....	52-1	52
LOW CLUTCH, PLANETARY, AND ADAPTER HOUSING.....	53-1	53
SHIFT LOCKOUT AND TRACTOR BRAKE	54-1	54
0713 - INTERMEDIATE CLUTCH.....	55-1	
FORWARD CLUTCH AND TURBINE SHAFT.....	55-1	55
FOURTH CLUTCH.....	56-1	56
THIRD CLUTCH, CENTER SUPPORT, AND SECOND CLUTCH.....	57-1	57
FIRST CLUTCH	58-1	58
0714 - SERVO UNIT.....	59-1	
CONTROL VALVE	59-1	59
REAR COVER	60-1	60
MODULATED LOCKUP VALVE	61-1	61
LOW SHIFT VALVE	62-1	62
0721 - COOLERS, PUMPS, MOTORS.....	63-1	
EXTERNAL OIL FILTER INSTALLATION.....	63-1	63
OIL PUMP AND FRONT SUPPORT.....	64-1	64
TRANSMISSION OIL SAMPLING VALVE.....	65-1	65
 GROUP 09 PROPELLER, PROPELLER SHAFTS, UNIVERSAL JOINTS, COUPLER, AND CLAMP ASSEMBLY		
0900 - PROPELLER SHAFTS	66-1	
DRIVE SHAFT	66-1	66
 GROUP 10 FRONT AXLE		
1000 - FRONT AXLE ASSEMBLY.....	67-1	
FRONT AXLE ASSEMBLY	67-1	67
FRONT AXLE HUB AND DRUM.....	68-1	68
 GROUP 11 REAR AXLE		
1100 - REAR AXLE ASSEMBLY.....	69-1	
DRIVE AXLE GROUP INSTALLATION.....	69-1	69
DRIVE AXLE ASSEMBLY.....	70-1	70
1102 - DIFFERENTIAL.....	71-1	
DIFFERENTIAL CARRIER ASSEMBLY.....	71-1	71

TABLE OF CONTENTS (Con't)

	Page	Illus Fig
GROUP 12	BRAKES	
1202 - SERVICE BRAKES	72-1	
FRONT AXLE BRAKES	72-1	72
REAR AXLE BRAKES	73-1	73
1208 - AIRBRAKE SYSTEM	74-1	
BRAKE AIR CHAMBER	74-1	74
REAR AXLE BRAKE AIR CHAMBER	75-1	75
TRACTOR BRAKES	76-1	76
AIR TANK INSTALLATION	77-1	77
AUTOMATIC DRAIN VALVE	78-1	78
QUICK-RELEASE VALVE	79-1	79
RELAY VALVE	80-1	80
TREADLE VALVE ASSEMBLY	81-1	81
LOW AIR PRESSURE SWITCH	82-1	82
AIR CONTROL VALVE	83-1	83
RATIO REDUCING VALVE	84-1	84
1209 - AIR COMPRESSOR ASSEMBLY	85-1	
AIR COMPRESSOR GOVERNOR	85-1	85
AIR COMPRESSOR	86-1	86
AIR STRAINER	87-1	87
ALCOHOL EVAPORATOR	88-1	88
1211 - TRAILER BRAKE CONNECTIONS AND CONTROLS	89-1	
TRACTOR PROTECTION VALVE	89-1	89
TRAILER BRAKE HOSES	90-1	90
HOSE TENDER	91-1	91
TRAILER HANDBRAKE CONTROL INSTALLATION	92-1	92
TRAILER HANDBRAKE CONTROL	93-1	93
GROUP 13	WHEELS AND TRACKS	
1313 - TIRES, TUBES, TIRE CHAINS	94-1	
WHEELS AND TIRES	94-1	94
GROUP 14	STEERING	
1401 - MECHANICAL STEERING GEAR ASSEMBLY	95-1	
STEERING	95-1	95
STEERING COLUMN AND JOINT	96-1	96
STEERING LINKAGE AND BALL SOCKETS	97-1	97
1407 - POWER STEERING GEAR ASSEMBLY	98-1	
STEERING GEAR	98-1	98
1410 - HYDRAULIC PUMP OR FLUID MOTOR ASSEMBLY	99-1	
POWER STEERING PUMP	99-1	99
1411 - HOSES, LINES, FITTINGS	100-1	
POWER STEERING HYDRAULICS	100-1	100
1413 - TANKS, RESERVOIRS	101-1	
POWER STEERING RESERVOIR	101-1	101
GROUP 15	FRAME, TOWING ATTACHMENTS, DRAWBARS, AND ARTICULATION SYSTEMS	
1501 - FRAME ASSEMBLY	102-1	
MAIN FRAME	102-1	102
GRILLE	103-1	103
HEAT SHIELD INSTALLATION	104-1	104
1503 - PINTLES AND TOWING ATTACHMENTS	105-1	
LIFT, TIE-DOWN, AND TOW HOOK INSTALLATION	105-1	105
1504 - SPARE WHEEL CARRIER AND TIRE LOCK	106-1	
SPARE TIRE CARRIER	106-1	106

TABLE OF CONTENTS (Con't)

	Page	Illus Fig
1506 - FIFTH WHEEL	107-1	
FIFTH WHEEL	107-1	107
FIFTH WHEEL ASSEMBLY	108-1	108
FIFTH WHEEL UNLATCH	109-1	109
FIFTH WHEEL UNLATCH VALVE	110-1	110
GROUP 16 SPRINGS AND SHOCK ABSORBERS		
1601 - SPRINGS	111-1	
FRONT AXLE SPRING	111-1	111
1604 - SHOCK ABSORBER EQUIPMENT	112-1	
SHOCK ABSORBER INSTALLATION	112-1	112
GROUP 18 BODY, CAB, HOOD, AND HULL		
1801 - BODY, CAB, HOOD, AND HULL ASSEMBLIES	113-1	
RADIATOR ACCESS PANEL	113-1	113
GRILLE GUARD INSTALLATION	114-1	114
MUDFLAP AND DOCK BUMPER INSTALLATION	115-1	115
REAR CAB GUARD INSTALLATION	116-1	116
ENGINE COMPARTMENT INSULATION	117-1	117
REAR PLATFORM INSTALLATION	118-1	118
CAB AND DECK	119-1	119
CAB DOOR	120-1	120
REAR WINDOW GUARD INSTALLATION	121-1	121
GRILLE	122-1	122
CAB INSULATION	123-1	123
CAB HOLD-DOWN INSTALLATION	124-1	124
1802 - FENDERS, RUNNING BOARDS WITH MOUNTING AND ATTACHING PARTS, OUTRIGGERS, WINDSHIELD, GLASS, ETC	125-1	
SIDE STEP	125-1	125
REAR AND SIDE WINDOWS	126-1	126
1806 - UPHOLSTERY, SEATS, AND CARPETS	127-1	
SEAT	127-1	127
SEAT ASSEMBLY (A)	128-1	128
SEAT ASSEMBLY (B)	129-1	129
1808 - STOWAGE RACKS, BOXES, STRAPS, CARRYING CASES, CABLE REELS, HOSE REELS, ETC	130-1	
TOOLBOX	130-1	130
GROUP 22 BODY, CHASSIS, AND HULL ACCESSORY ITEMS		
2202 - ACCESSORY ITEMS	131-1	
SUNVISOR AND INSIDE MIRROR	131-1	131
WINDSHIELD WIPER	132-1	132
WINDSHIELD WASHER	133-1	133
WARNING TRIANGLE AND FIRST AID KIT	134-1	134
MIRRORS	135-1	135
AIR HORN	136-1	136
2207 - WINTERIZATION EQUIPMENT	137-1	
OIL PAN AND HEATER	137-1	137
COOLANT HEATER AND JUNCTION BOX	138-1	138
BATTERY	139-1	139
CAB HEATER	140-1	140

TABLE OF CONTENTS (Con't)

	Page	Illus Fig
2210 - DATA PLATES AND INSTRUCTION HOLDERS	141-1	
DECALS	141-1	141
DECALS AND PLATES	142-1	142
GROUP 24 HYDRAULIC AND FLUID SYSTEMS		
2401 - PUMP AND MOTOR.....	143-1	
POWER TAKE-OFF	143-1	143
HYDRAULIC PUMP.....	144-1	144
2402 - MANIFOLD AND/OR CONTROL VALVES	145-1	
HYDRAULIC VALVE	145-1	145
CAB TILT PUMP.....	146-1	146
2403 - HYDRAULIC CONTROLS AND/OR MANUAL CONTROLS.....	147-1	
FIFTH WHEEL CONTROL.....	147-1	147
2404 - TILT CYLINDERS AND TILT CRANK	148-1	
CAB HOLD-DOWN ASSEMBLY.....	148-1	148
CAB TILT CYLINDER.....	149-1	149
2406 - STRAINERS, FILTERS, LINES, AND FITTINGS, ETC	150-1	
FIFTH WHEEL HYDRAULICS.....	150-1	150
HYDRAULIC FILTERS	151-1	151
HYDRAULIC HOSES	152-1	152
2407 - HYDRAULIC CYLINDERS	153-1	
PIVOT SHAFT.....	153-1	153
HYDRAULIC CYLINDER.....	154-1	154
2408 - LIQUID TANKS OR RESERVOIRS.....	155-1	
HYDRAULIC RESERVOIR.....	155-1	155
GROUP 47 GAGES (NONELECTRICAL). WEIGHING AND MEASURING DEVICES		
4701 - INSTRUMENTS	156-1	
SPEEDOMETER.....	156-1	156
TACHOMETER.....	157-1	157
4702 - GAGES, MOUNTINGS, LINES, AND FITTINGS.....	158-1	
AIR GAGE	158-1	158
GROUP 94 REPAIR KITS		
9401 - REPAIR KITS.....	KIT-1	
REPAIR KITS.....	KIT-1	KIT
GROUP 95 GENERAL USE STANDARDIZED PARTS		
9501 - BULK MATERIEL.....	BULK-1	
BULK MATERIEL.....	BULK-1	BULK
SECTION III. SPECIAL TOOLS LIST (NOT APPLICABLE)		
SECTION IV. CROSS-REFERENCE INDEXES		
NATIONAL STOCK NUMBER INDEX.....	I-1	
PART NUMBER INDEX.....	I-28	
FIGURE AND ITEM NUMBER INDEX.....	I-99	

**UNIT, DIRECT SUPPORT, AND GENERAL SUPPORT
MAINTENANCE REPAIR PARTS AND
SPECIAL TOOLS LISTS**

SECTION I. INTRODUCTION

1. Scope.

This RPSTL lists and authorizes spares and repair parts; special tools; special test, measurement, and diagnostic equipment (TMDE); and other special support equipment required for performance of Unit, Direct Support, and General Support Maintenance of the Yard-Type Truck Tractor. It authorizes the requisitioning, Issue, and disposition of spares, repair parts and special tools as indicated by the source, maintenance and recoverability (SMR) codes.

2. General.

In addition to Section I. Introduction, this Repair Parts and Special Tools List is divided into the following sections:

a. *Section II. Repair Parts List.* A list of spares and repair parts authorized by this RPSTL for use in the performance of maintenance. The list also includes parts which must be removed for replacement of the authorized parts. Parts lists are composed of functional groups in ascending alphanumeric sequence, with the parts in each group listed in ascending figure and item number sequence. Bulk materials are listed in item name sequence. Repair kits are listed separately in their own functional group within Section II. Repair parts for reparable special tools are also listed in the section. Items listed are shown on the associated illustration(s)/figure(s).

b. *Section III. Special Tools List.* A list of special tools, special TMDE, and other special support equipment authorized by this RPSTL (as indicated by Basis of Issue (BOI) information in DESCRIPTION AND USABLE ON CODE column) for the performance of maintenance.

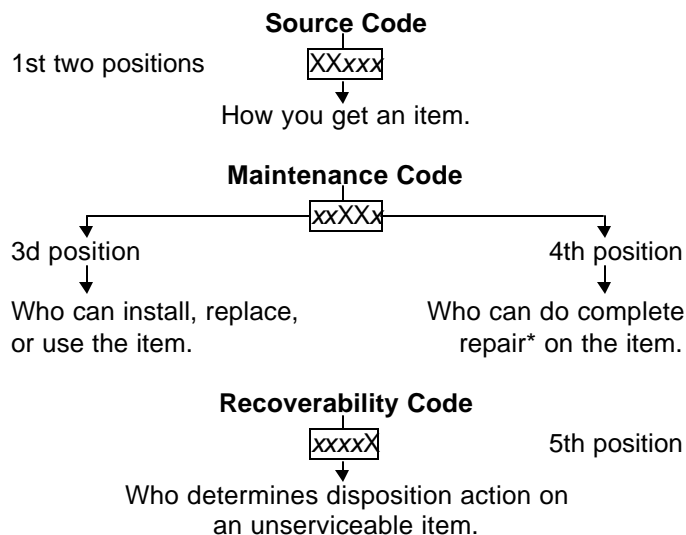
c. *Section IV Cross-reference Indexes.* A list, in National Item Identification Number (NIIN) sequence, of all National stock numbered items appearing in the listing, followed by a list in alphanumeric sequence of all part numbers appearing in the listings. National stock numbers and part numbers are cross-referenced to each illustration/figure and item number appearance.

The figure and item number Index lists figure and item numbers in alphanumeric sequence and cross-references NSN, CAGE, and part numbers.

3. Explanation of Columns (Sections II and III).

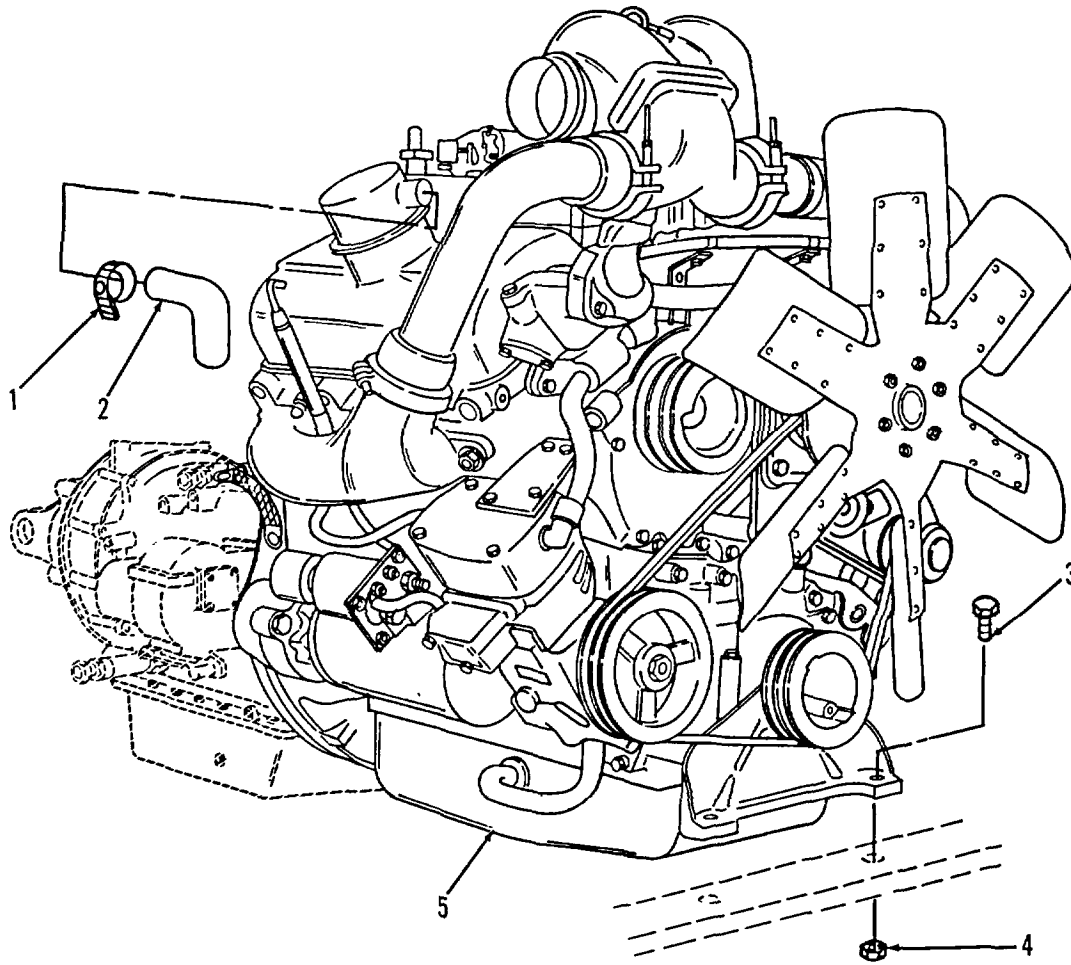
a. *ITEM NO. (Column (1)).* Indicates the number used to identify items called out in the illustration.

b. *SMR CODE (Column (2)).* The Source, Maintenance, and Recoverability (SMR) code is a 5-position code containing supply/requisitioning information, maintenance category authorization criteria, and disposition instructions, as shown in the following breakout:



**Complete Repair;* Maintenance capacity, capability, and authority to perform all corrective maintenance tasks of the "Repair" function in a use/user environment in order to restore serviceability to a failed item.

(1) *Source Code.* The source code tells you how to get an item needed for maintenance, repair, or overhaul of an end item/equipment. Explanations of source codes follows:



TA510001

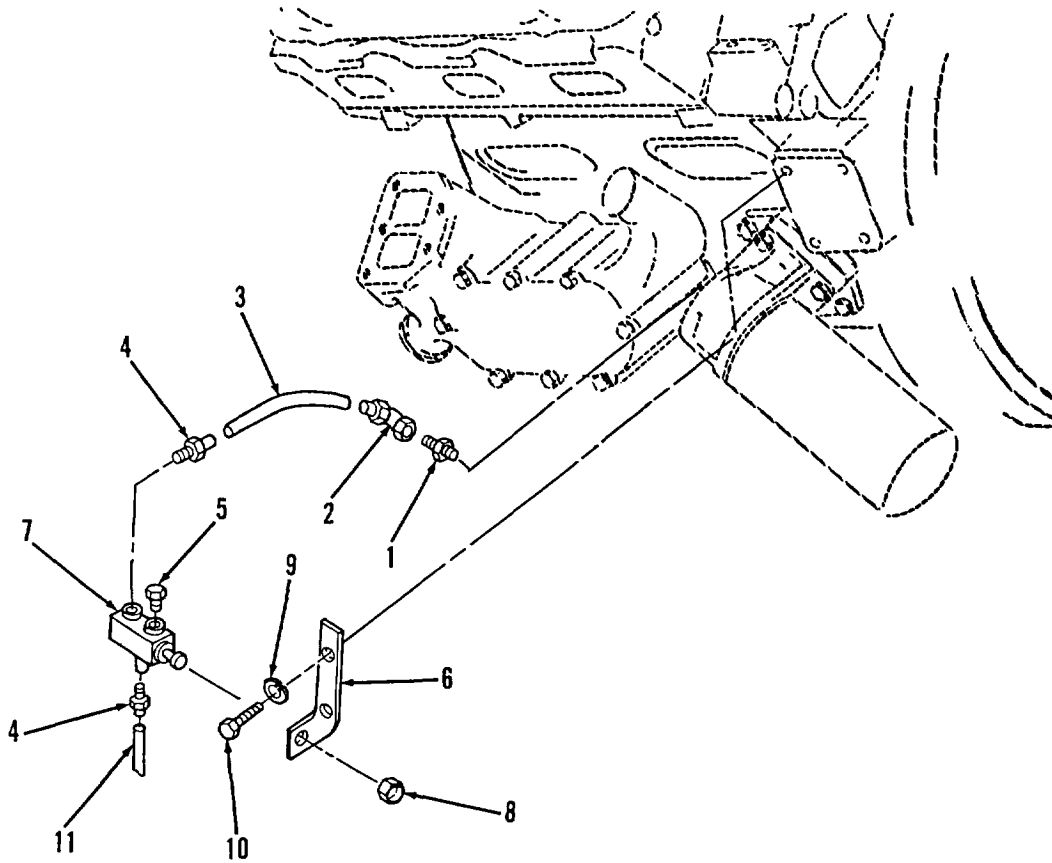
FIGURE 1. ENGINE MOUNTING.

SECTION II

TM 9-2320-285-24P

(1) ITEM NO	(2) SMR CODE	(3) CAGEC	(4) PART NUMBER	(5) DESCRIPTION AND USABLE ON CODES (UOC)	(6) QTY
				GROUP 01 ENGINE	
				GROUP 0100 ENGINE ASSEMBLY	
				FIG. 1 ENGINE MOUNTING	
1	PFOZZ	96906	MS35842-12	CLAMP, HOSE	2
2	PAOZZ	24161	24018	HOSE, NONMETALLIC.....	2
3	PAFZZ	96906	MS90727-164	SCREW, CAP, HEXAGON H.....	2
4	PFFZZ	72962	52NE108	NUT, SELF-LOCKING, HE	2
5	PAFHH	72582	5067-534C	ENGINE, DIESEL	1

END OF FIGURE



TA510002

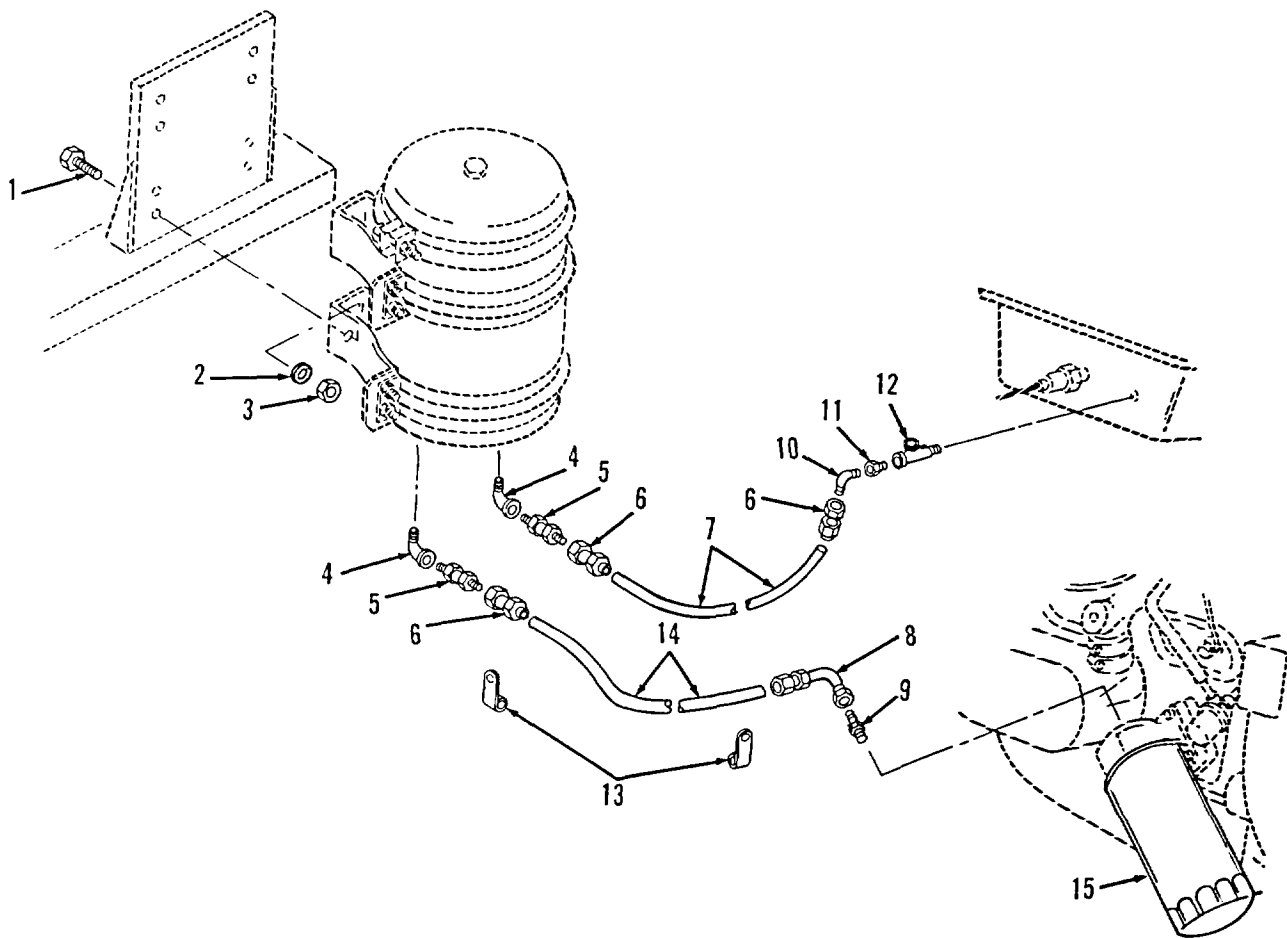
FIGURE 2. OIL SAMPLING KIT.

SECTION II

TM 9-2320-285-24P

(1) ITEM NO	(2) SMR CODE	(3) CAGEC	(4) PART NUMBER	(5) DESCRIPTION AND USABLE ON CODES (UOC)	(6) QTY
GROUP C106 ENGINE LUBRICATION SYSTEM					
FIG. 2 OIL SAMPLING KIT					
1	PAOZZ	90915	90210020	ADAPTER, STRAIGHT, PI	1
2	PFOZZ	00624	FC9236-04-04S	ELBOW, TUBE TO HOSE	1
3	MOOZZ	19207	004644421-15	HOSE, NONMETALLIC MAKE FROM HOSE P/..... N FC 137-04	1
4	PAOZZ	89926	70920834	ADAPTER, STRAIGHT, PI	2
5	PAOZZ	81348	WW-P-471AASBCA	PLUG, PIPE	1
6	XBOZZ	90915	53516328	BRACKET.....	1
7	PAOZZ	09990	GT400S	VALVE, LINEAR, DIRECT.....	1
8	XAOZZ	09990	NPN-A	.NUT.....	1
9	PFOZZ	96906	MS35338-48	WASHER, LOCK	2
10	PAOZZ	96906	MS90725-128	SCREW, CAP, HEXAGON H.....	2
11	MOOZZ	01276	FC 107-04-X	HOSE, NONMETALLIC.....	5

END OF FIGURE



TA510003

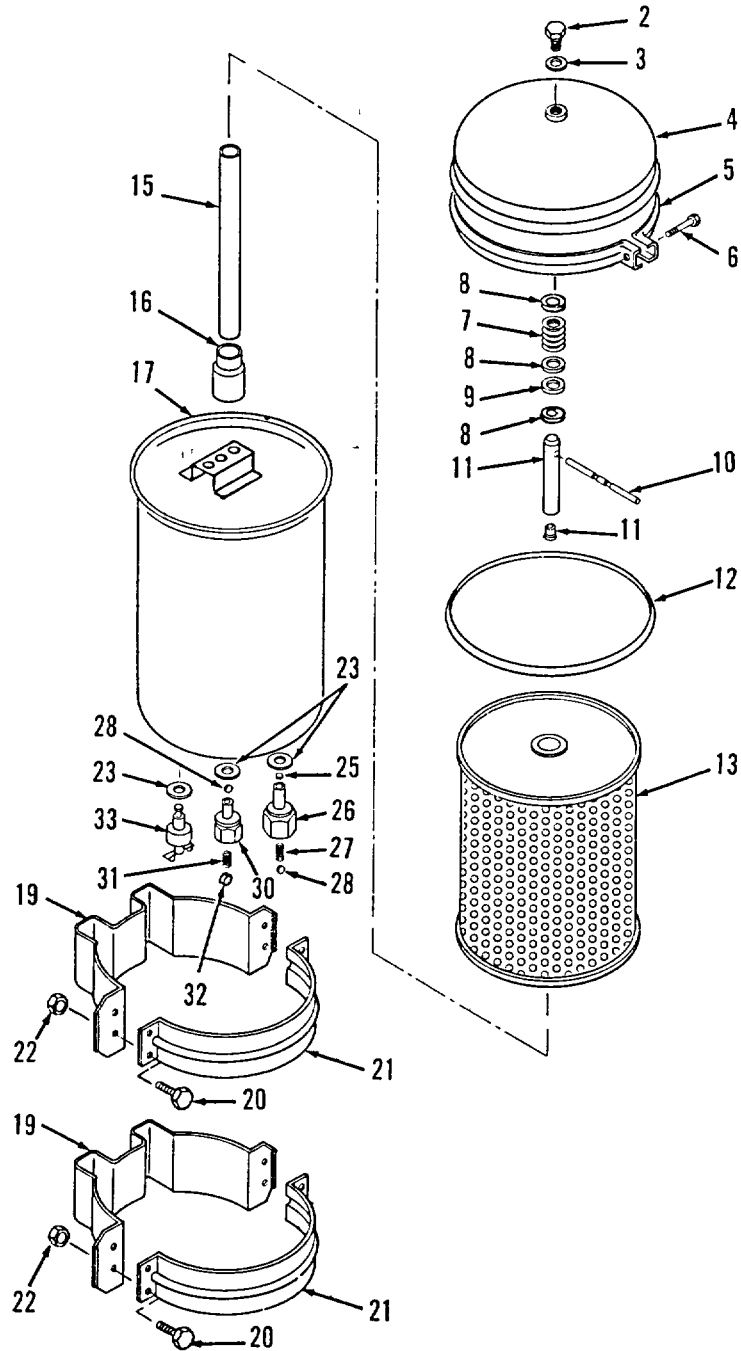
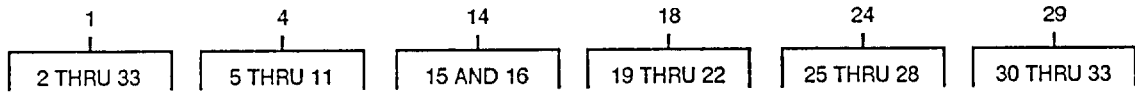
FIGURE 3. EXTERNAL OIL FILTER.

SECTION II

TM 9-2320-285-24P

(1) ITEM NO	(2) SMR CODE	(3) CAGEC	(4) PART NUMBER	(5) DESCRIPTION AND USABLE ON CODES (UOC)	(6) QTY
GROUP 0106 ENGINE LUBRICATION SYSTEM					
FIG. 3 EXTERNAL OIL FILTER					
1	PFOZZ	96906	MS90728-60	SCREW, CAP, HEXAGON H.....	8
2	PAOZZ	96906	MS15795-513	WASHER, FLAT.....	8
3	PAOZZ	72962	52NE066	NUT, SELF-LOCKING, HE	8
4	PAOZZ	96906	MS39230-4	ELBOW, PIPE NPT.....	2
5	PAOZZ	00624	2021-6-8S	ADAPTER, STRAIGHT, PI.....	2
6	PAOZZ	01276	FC9210-0606S	ADAPTER, STRAIGHT, TU	3
7	MOOZZ	19207	010748373-42	HOSE, NONMETALLIC MAKE FROM HOSE P/	1
				N FC 184-66.....	
8	PAOZZ	00624	FC9234-0606S	ELBOW, TUBE TO HOSE	1
9	PAOZZ	96906	MS51500A6-6	ADAPTER, STRAIGHT, PI	1
10	PAOZZ	93061	249F-6-4	ELBOW, PIPE TO TUBE	1
11	PAOZZ	96906	MS39232-5	REDUCER, PIPE	1
12	PAOZZ	12603	30F3	TEE, PIPE NPT	1
13	PAOZZ	96906	MS21333-73	CLAMP, LOOP	2
14	MOOZZ	19207	010748373-52	HOSE, NONMETALLIC MAKE FROM HOSE P/	1
				N FC 184-6.....	
15	PAOZZ	33457	LF-670SC	FILTER ELEMENT, FLUI.....	1

END OF FIGURE

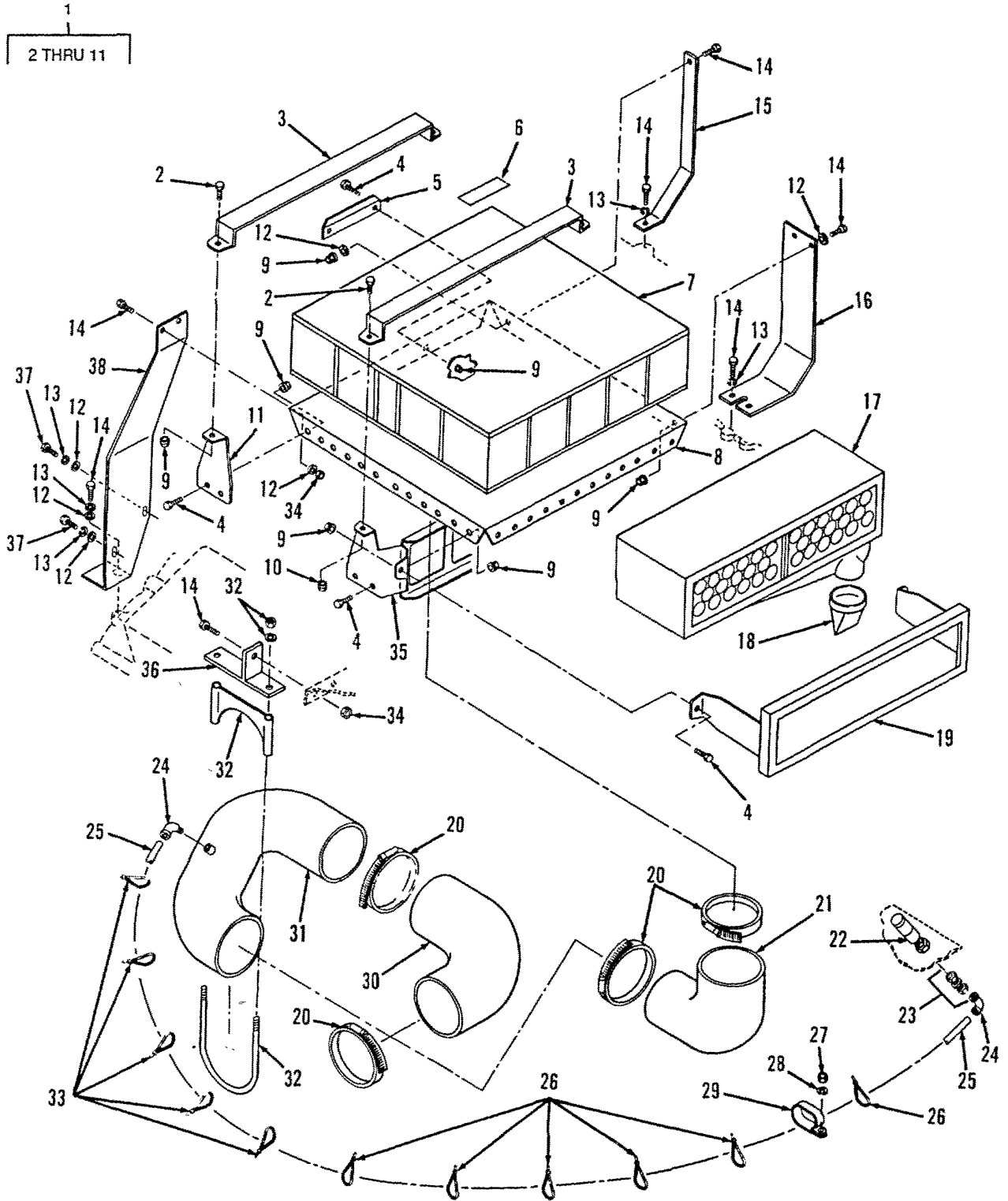


TA510004

FIGURE 4. OIL FILTER ASSEMBLY.

(1) ITEM NO	(2) SMR CODE	(3) CAGEC	(4) PART NUMBER	(5) DESCRIPTION AND USABLE ON CODES (UOC)	(6) QTY
GROUP 0106 ENGINE LUBRICATION SYSTEM					
FIG. 4 OIL FILTER ASSEMBLY					
1	PAOZZ	37099	2095	FILTER ELEMENT, FLUI.....	1
2	PAOZZ	37099	2360	.SCREW, CAP, HEXAGON H.....	1
3	PAOZZ	37099	326-02361	.SPACE, RING	1
4	XDOZZ	37099	2255	.COVER.....	1
5	PAOZZ	37099	3566	.CLAMP, RING	1
6	PAOZZ	37099	3564	..BOLT, MACHINE	1
7	KFOZZ	37099	2139	..SPRING PART OF KIT P/N 345-21244	1
8	KFOZZ	37099	2146	..STEEL WASHER PART OF KIT P/N 345- 21244.....	3
9	PAOZZ	37099	2145	..GASKET PART OF KIT P/N 345-21244.....	1
10	KFOZZ	37099	2236	..HANDLE PART OF KIT P/N 345-21244.....	1
11	PAOOZ	37099	2159-4	..RESTRICTOR, FLUID FL PART OF KIT P/N 345-21244	1
11	PAOZZ	37099	2159-4	..RESTRICTOR, FLUID FL	1
12	PAOZZ	37099	2788	.GASKET	1
13	PAOZZ	37099	2141	.FILTER, FLUID.....	1
14	PAOZZ	37099	1869	.TUBE AND NOT ASSEB.....	1
15	XAOZZ	37099	1292	..OUTLET TUBE	1
16	XAOZZ	37099	1865	..NUT.....	1
17	XAOZZ	37099	2253	.HOUSING	1
18	PFOZZ	37099	334-02233	.BRACKET, FILTER MOUNT.....	2
19	XAOZZ	37099	2206	..BRACKET	1
20	PAOZZ	37099	310-02781	..SCREW, CAP, HEXAGON H.....	4
21	XAOZZ	37099	2205	..BAND, BRACKET.....	1
22	PAOZZ	37099	756	..NUT, SELF-LOCKING, HE	4
23	PAOZZ	37099	1586	.WASHER, FLAT	3
24	PFOZZ	37099	1886	.VALVE, CHECK.....	1
25	PFOZZ	37099	2188	..VALVE CHECK.....	1
26	PFOZZ	37099	1886	..VALVE, CHECK.....	1
27	XDOZZ	37099	1744	..SPRING, HELICAL, EXTE	1
28	XDOZZ	37099	1175	..RING, RETAINING.....	2
29	PAOZZ	37099	2188	.VALVE, CHECK.....	1
30	PFOZZ	37099	2188	..VALVE, CHECK.....	1
31	XDOZZ	37099	1604	..SPRING, HELICAL, EXTE	1
32	PFOZZ	37099	2188	..VALVE, CHECK.....	1
33	PAOZZ	37099	2322	.COCK, DRAIN	1

END OF FIGURE



TA510005

FIGURE 5. AIR CLEANER.

SECTION II

TM 9-2320-285-24P

(1) ITEM NO	(2) SMR CODE	(3) CAGEC	(4) PART NUMBER	(5) DESCRIPTION AND USABLE ON CODES (UOC)	(6) QTY
GROUP 03 FUEL SYSTEM					
GROUP 0304 AIR CLEANER					
FIG. 5 AIR CLEANER					
1	PFOOO	21585	C68845	AIR CLEANER, INTAKE.....	1
2	PFOZZ	96906	MS90728-32	.BOLT, MACHINE	4
3	XDOZZ	21585	B49890-3	.STRAP, CLAMP	2
4	PAOZZ	96906	MS18154-5E	.SCREW, CAP, HEXAGON	10
5	XDOZZ	21585	A50073	.BRACKET, LOCATING	1
6	XAOZZ	21585	L51373	.LABEL	1
7	PAOZZ	21585	C-45800	.FILTER, ELEMENT INTA	1
8	XAOZZ	21585	C68847	.PLENUM SUBASSY.	1
9	PAOZZ	96906	MS51967-8	.NUT, PLAIN, HEXAGON	10
10	PAOZZ	96906	MS51967-5	.NUT, PLAIN, HEXAGON	4
11	XDOZZ	21585	B49891	.BRACKET, CLAMP	2
12	PAOZZ	96906	MS15795-510	WASHER, FLAT.....	8
13	PFOZZ	96906	MS35338-C46	WASHER, LOCK	6
14	PFOZZ	96906	MS90728-E0	SCREW, CAP, HEXAGON H.....	9
15	XBOZZ	90915	53516098	BRACKET, SUPPORT.....	1
16	XBOZZ	90915	53516071	BRACKET, SUPPORT.....	1
17	PAOZZ	21585	L60308	FILTER ELEMENT, INTA	1
18	PAOZZ	21585	B-49780	CAP, RUBBER, AIR CLEA.....	1
19	PAOZZ	21585	51884-002	FILLER RETAINING, FR.....	1
20	PFOZZ	66295	C92PS	CLAMP, HOSE	4
21	PAOZZ	90915	53516205	ELBOW, PIPE	1
22	PAOZZ	18265	RAX00-2354	SERVICE INDICATOR K.....	1
23	PAOZZ	06853	225740	COUPLING, PIPE.....	1
24	PAOZZ	96906	MS51845-1	ELBOW, PIPE	1
25	MOOZZ	19207	004434746-120-X	HOSE, NONMETALLIC MAKE FROM HOSE P/ N 5199575.....	1
26	PAOZZ	96906	MS3367-2-9	STRAP, TIEDOWN, ELECT.....	6
27	PAOZZ	96906	MS51967-6	NUT, PLAIN, HEXAGON.....	1
28	PAOZZ	96906	MS35338-45	WASHER, LOCK	1
29	PAOZZ	96906	MS21333-67	CLAM, LOOP	1
30	PAOZZ	74687	90HL4SR	ELBOW, HOSE	1
31	PAOZZ	90915	53516209	TUBE, BENT, METALLIC	1
32	PFOZZ	01652	U-400-Z	CLAMP	1
33	PAOZZ	96906	MS3367-1-9	STRAP, TIEDOWN, ELECT.....	5
34	PAOZZ	72962	52NE066	NUT, SELF-LOCKING, HE	3
35	PFOZZ	21585	B-59599-2	BRACKET, INTAKE AIR.....	1
36	XBOZZ	90915	53516069	BRACKET, MOUNTING	1
37	PAOZZ	96906	MS90725-68	SCREW, CAP, HEXAGON H.....	2
38	XBOZZ	90915	53516065	BRACKET, SUPPORT.....	1

END OF FIGURE