

TECHNICAL MANUAL

UNIT MAINTENANCE  
REPAIR PARTS AND SPECIAL  
TOOLS LISTS  
FOR

**TRUCK, TRACTOR, COMMERCIAL  
HEAVY EQUIPMENT TRANSPORTER  
C-HET  
85,000 GVWR, 8 X 6,  
ARMY MODEL M911  
NSN 2320-01-025-3733**

This manual supersedes TM9-2320-270-20P, 19 March 1985

Approved for Public Release; Distribution is Unlimited

---

HEADQUARTERS, DEPARTMENT OF THE ARMY  
AUGUST 1989

**UNIT MAINTENANCE  
REPAIR PARTS AND SPECIAL TOOLS LISTS  
TRUCK, TRACTOR COMMERCIAL  
HEAVY EQUIPMENT TRANSPORTER  
C-HET  
85,000 GVWR, 8x6  
ARMY MODEL M911  
NSN 2320-01-025-3733**

Current as of 14 April 1989

REPORTING ERRORS AND RECOMMENDING IMPROVEMENTS

You can help improve this manual. If you find any mistakes or if you know of a way to improve the procedures, please let us know. Mail your letter, DA Form 2028 (Recommended Changes to Publications and Blank Form), or DA Form 2028-2 located in back of this manual direct to: Commander, U.S. Army Tank Automotive Command, ATTN: AMSTA-MB, Warren, MI 48397-5000. A reply will be furnished to you.

Approved for Public Release: Distribution is Unlimited.

**TABLE OF CONTENTS**

|  | Page | Illus<br>Fig |
|--|------|--------------|
| SECTION 1. INTRODUCTION  | 1    |              |
| SECTION II. REPAIR PARTS LIST  | 1-1  |              |
| GROUP 01      ENGINE   |      |              |
| 0105-VALVES, CAMSHAFTS, AND TIMING SYSTEMS .....                       | 1-1  |              |
| ROCKER COVERS AND RELATED PARTS FOR THE<br>LATE T AND TA ENGINES ..... | 1-1  | 1            |
| ROCKER COVERS AND RELATED PARTS FOR THE<br>EARLY T ENGINE .....        | 2-1  | 2            |

\*This publication supersedes TM9-2320-270-20P, 19 March 1985 and all changes.

TABLE OF CONTENTS

|   | Page | Illus<br>Fig |
|---|------|--------------|
| 0106-ENGINE LUBRICATION SYSTEM.....                                   | 3-1  |              |
| OIL FILTER, BREATHER, AND RELATED PARTS .....                         | 3-1  | 3            |
| OIL PAN, GAGE GUIDE, AND RELATED PARTS .....                          | 4-1  | 4            |
| OIL FILTER, ADAPTER, AND ANALYSIS KIT .....                           | 5-1  | 5            |
| <br>GROUP 03      FUEL SYSTEM   |      |              |
| 0302-FUEL PUMPS .....   | 6-1  |              |
| FUEL PUMPS AND RELATED PARTS .....                                    | 6-1  | 6            |
| FUEL LINES AND FITTINGS.....  | 7-1  | 7            |
| 0304-AIR CLEANER .....  | 8-1  |              |
| AIR INTAKE FILTER AND RELATED PARTS.....                              | 8-1  | 8            |
| AIR CLEANER BRACKETS AND RELATED PARTS .....                          | 9-1  | 9            |
| 0305-SUPERCHARGER, BLOWER AND TURBOCHARGER .....                      | 10-1 |              |
| AIR INLET HOUSING .....   | 10-1 | 10           |
| 0306-TANKS, LINES AND FITTINGS .....                                  | 11-1 |              |
| FUEL TANKS, LINES AND FITTINGS .....                                  | 11-1 | 11           |
| 0309-FUEL FILTERS .....   | 12-1 |              |
| PRIMARY FUEL FILTER AND MOUNTING BRACKET (SPIN ON TYPE) .....         | 12-1 | 12           |
| SECONDARY FUEL FILTER AND RELATED PARTS (SPIN ON TYPE) .....          | 13-1 | 13           |
| PRIMARY AND SECONDARY FUEL FILTERS<br>(REPLACEABLE ELEMENT TYPE)..... | 14-1 | 14           |
| 0311-ENGINE STARTING AIDS .....                                       | 15-1 |              |
| ENGINE FUEL PRIMER AND RELATED PARTS .....                            | 15-1 | 15           |
| 0312-ACCELERATOR, THROTTLE OR CHOKE CONTROLS .....                    | 16-1 |              |
| THROTTLE CONTROL AND RELATED PARTS .....                              | 16-1 | 16           |
| ACCELERATOR PEDAL .....   | 17-1 | 17           |
| <br>GROUP 04      EXHAUST SYSTEM                                      |      |              |
| 0401-MUFFLER AND PIPES .....  | 18-1 |              |
| MUFFLER AND RELATED PARTS .....                                       | 18-1 | 18           |
| EXHAUST PIPE AND RELATED PARTS .....                                  | 19-1 | 19           |
| <br>GROUP 05      COOLING SYSTEM                                      |      |              |
| 0501-RADIATOR, EVAPORATIVE COOLER, OR HEAT EXCHANGER .....            | 20-1 |              |
| RADIATOR TIE RODS AND RELATED PARTS.....                              | 20-1 | 20           |
| RADIATOR CORE AND RELATED PARTS .....                                 | 21-1 | 21           |
| HEAT EXCHANGER AND RELATED PARTS.....                                 | 22-1 | 22           |
| 0502-COWLING, DEFLECTORS, AIR DUCTS, SHROUDS.....                     | 23-1 |              |
| RADIATOR GUARD AND RELATED PARTS .....                                | 23-1 | 23           |
| 0503-WATER MANIFOLD, HEADERS, THERMOSTATS AND<br>HOUSING GASKETS..... | 24-1 |              |
| THERMOSTAT, HOUSINGS AND RELATED PARTS .....                          | 24-1 | 24           |
| RADIATOR HOSES AND RELATED PARTS.....                                 | 25-1 | 25           |
| HEAT EXCHANGER HOSES AND RELATED PARTS .....                          | 26-1 | 26           |
| 0505-FAN ASSEMBLY.....  | 27-1 |              |
| FAN SHUT OFF VALVE AND RELATED PARTS .....                            | 27-1 | 27           |
| FAN, BELTS, AND RELATED PARTS.....                                    | 28-1 | 28           |
| <br>GROUP 06      ELECTRICAL SYSTEM                                   |      |              |
| 0601-ALTERNATOR .....   | 29-1 |              |
| ALTERNATOR AND RELATED PARTS.....                                     | 29-1 | 29           |
| 0603-STARTING MOTOR.....  | 30-1 |              |
| STARTER, RELAY, SOLENOID AND RELATED PARTS.....                       | 30-1 | 30           |
| STARTER LEVER HOUSING AND RELATED PARTS.....                          | 31-1 | 31           |
| 0606-ENGINE SAFETY CONTROLS.....                                      | 32-1 |              |
| ENGINE SHUT DOWN AND RELATED PARTS .....                              | 32-1 | 32           |

TABLE OF CONTENTS

|  | Page | Illus<br>Fig |
|--|------|--------------|
| 0607-INSTRUMENT CONTROL PANEL .....  | 33-1 |              |
| INSTRUMENT PANEL AND RELATED APRTS .....   | 33-1 | 33           |
| INSTRUMENT PANEL INDICATOR AND CONTROLS<br>(INCLUDES WINCH/CONTROL SWITCHES) .....   | 34-1 | 34           |
| TACHOGRAPH .....   | 35-1 | 35           |
| 0608-MISCELLANEOUS ITEMS .....   | 36-1 |              |
| SENDING SWITCHES .....   | 36-1 | 36           |
| SENDING SWITCHES AND RELATED PARTS<br>(INCLUDES NEUTRAL SAFETY SWITCH AND PIN) ..... | 37-1 | 37           |
| 0609-LIGHTS .....  | 38-1 |              |
| BACKUP LIGHT .....   | 38-1 | 38           |
| DOME LIGHT .....   | 39-1 | 39           |
| WORK LIGHT ASSEMBLY .....  | 40-1 | 40           |
| CLEARANCE LIGHT .....  | 41-1 | 41           |
| HEADLIGHT ASSEMBLY .....   | 42-1 | 42           |
| WARNING LIGHT .....  | 43-1 | 43           |
| STOP LIGHT .....   | 44-1 | 44           |
| TURN SIGNAL AND RELATED PARTS .....  | 45-1 | 45           |
| BLACKOUT HEADLIGHT .....   | 46-1 | 46           |
| BLACKOUT CLEARANCE LIGHT .....   | 47-1 | 47           |
| BLACKOUT TAILLIGHT .....   | 48-1 | 48           |
| 0610-SENDING UNITS AND WARNING SWITCHES .....  | 49-1 |              |
| LOW AIR PRESSURE INDICATOR .....   | 49-1 | 49           |
| SENDING UNITS AND RELATED PARTS .....  | 50-1 | 50           |
| 0611-HORN .....  | 51-1 |              |
| HORN AND RELATED PARTS .....   | 51-1 | 51           |
| 0612-BATTERIES, STORAGE .....  | 52-1 |              |
| BATTERY BOX AND RELATED PARTS .....  | 52-1 | 52           |
| BATTERY AND RETAINER ASSEMBLY .....  | 53-1 | 53           |
| BATTERY CABLES .....   | 54-1 | 54           |
| 0613-CHASSIS WIRING HARNESS .....  | 55-1 |              |
| LAMPHOLDER, OPTICAL RIBBON, AND RELATED PARTS .....                                  | 55-1 | 55           |
| ENGINE WIRING HARNESS .....  | 56-1 | 56           |
| CHASSIS WIRING HARNESS (REAR SECTION) .....  | 57-1 | 57           |
| CAB WIRING (INTERIOR SECTION) .....  | 58-1 | 58           |
| CAB WIRING (FIREWALL SECTION) .....  | 59-1 | 59           |
| INSTRUMENT PANEL WIRING (RIGHT SIDE) .....   | 60-1 | 60           |
| INSTRUMENT PANEL WIRING (LEFT SIDE) .....  | 61-1 | 61           |
| <br>GROUP 07   |      |              |
| TRANSMISSION   |      |              |
| 0700-TRANSMISSION ASSEMBLY .....   | 62-1 |              |
| AUXILIARY TRANSMISSION AND RELATED PARTS .....                                       | 62-1 | 62           |
| 0705-GEAR SHIFT, VACUUM BOOSTER AND CONTROLS .....                                   | 63-1 |              |
| SHIFT CONTROL AND RELATED PARTS .....  | 63-1 | 63           |
| 0710-TRANSMISSION ASSEMBLY (HYDRAULIC) .....   | 64-1 |              |
| TRANSMISSION EXPLODED VIEW .....   | 64-1 | 64           |
| 0713-INTERMEDIATE CLUTCH .....   | 65-1 |              |
| TRANSMISSION RETARDER CONTROL PEDAL<br>AND RELATED PARTS .....                       | 65-1 | 65           |
| 0721-COOLERS, PUMP, MOTORS .....   | 66-1 |              |
| EXTERNAL TRANSMISSION OIL FILTER AND RELATED PARTS .....                             | 66-1 | 66           |
| HYDRAULIC OIL COOLER HOSES AND RELATED PARTS .....                                   | 67-1 | 67           |
| <br>GROUP 08   |      |              |
| TRANSFER AND FINAL DRIVE ASSEMBLIES  |      |              |
| 0803-GEAR SHIFT, VACUUM BOOSTER AND CONTROLS .....                                   | 68-1 |              |
| TRANSFER CASE LOCKUP VALVE AND RELATED PARTS .....                                   | 68-1 | 68           |

TABLE OF CONTENTS

|          | Page   | Illus<br>Fig |
|----------|--|--------------|
| GROUP 09 | PROPELLER SHAFTS   |              |
|          | 0900-PROPELLER SHAFTS.....   | 69-1         |
|          | PROPELLER SHAFTS AND RELATED PARTS .....   | 69-1         |
|          |  | 69           |
| GROUP 10 | FRONT AXLE   |              |
|          | 1000-FRONT AXLE ASSEMBLY .....   | 70-1         |
|          | FRONT AXLE ASSEMBLY AND RELATED PARTS .....  | 70-1         |
|          |  | 70           |
| GROUP 11 | REAR AXLE  |              |
|          | 1100-REAR AXLE ASSEMBLY .....  | 71-1         |
|          | AXLE SHAFT AND RELATED PARTS .....   | 71-1         |
|          | 1101-HOUSING, BEAM, HOUSING COVERS, PLUGS AND SEALS .....                          | 72-1         |
|          | AXLE HOUSING ASSEMBLY .....  | 72-1         |
|          | HOUSING ASSEMBLY EXPLODED VIEW .....   | 73-1         |
|          | 1102-DIFFERENTIAL .....  | 74-1         |
|          | UNIVERSAL YOKE AND RELATED PARTS .....   | 74-1         |
|          | UNIVERSAL YOKE EXPLODED VIEW .....   | 75-1         |
|          | 1105-TANDEM DRIVE ASSEMBLY .....   | 76-1         |
|          | REAR TANDEM AIR SHIFT CHAMBER HOSE AND RELATED PARTS .....                         | 76-1         |
|          |  | 71           |
|          |  | 72           |
|          |  | 73           |
|          |  | 74           |
|          |  | 75           |
|          |  | 76           |
| GROUP 12 | BRAKES   |              |
|          | 1202-SERVICE BRAKES .....  | 77-1         |
|          | FRONT BRAKE ASSEMBLY .....   | 77-1         |
|          | PUSHER AXLE BRAKE SHOE AND LINING ASSEMBLY .....                                   | 78-1         |
|          | PUSHER AXLE BRAKE ACTUATOR HOUSING AND RELATED PARTS .....                         | 79-1         |
|          | BRAKE BRACKET ASSEMBLY FOR INTERMEDIATE AND REAR,<br>REAR AXLES .....              | 80-1         |
|          | DIRT DEFLECTOR AND BRAKE LINING KIT FOR INTERMEDIATE<br>AND REAR, REAR AXLES ..... | 81-1         |
|          | 1208-AIR BRAKE SYSTEM .....  | 82-1         |
|          | FRONT AXLE AIR BRAKE CHAMBER .....   | 82-1         |
|          | PUSHER AXLE AIR BRAKE CHAMBER .....  | 83-1         |
|          | TANDEM AXLE AIR BRAKE CHAMBER .....  | 84-1         |
|          | BRAKE TREADLE VALVE ASSEMBLY .....   | 85-1         |
|          | AIR PRESSURE TANKS AND RELATED PARTS .....   | 86-1         |
|          | AIR PRESSURE LINES AND FITTINGS .....  | 87-1         |
|          | SPRING BRAKE AND THROTTLE SHUTOFF VALVE ASSEMBLES .....                            | 88-1         |
|          | VALVE BODY .....   | 89-1         |
|          | COUPLING AND RELATED PARTS .....   | 90-1         |
|          | CONNECTORS AND RELATED PARTS .....   | 91-1         |
|          | BULKHEAD FITTINGS AND RELATED PARTS .....  | 92-1         |
|          | TRAILER BRAKE CONTROL AND AIR PRESSURE<br>GAGE LINES AND FITTINGS .....            | 93-1         |
|          | TRAILER BRAKE CONTROL LINES AND FITTINGS .....                                     | 94-1         |
|          | AIR TANK LINES AND FITTINGS .....  | 95-1         |
|          | AIR PRESSURE GAGE'S LINES AND FITTINGS .....                                       | 96-1         |
|          | RELAY VALVE .....  | 97-1         |
|          | SPRING BRAKE VALVE AND RELATED PARTS .....   | 98-1         |
|          | SPRING BRAKE LINES AND FITTINGS .....  | 99-1         |
|          | BRAKE RELEASE VALVE AND FITTINGS .....   | 100-1        |
|          | CHECK VALVES AND FITTINGS .....  | 101-1        |
|          | AIR MANIFOLD AND RELATED PARTS .....   | 102-1        |
|          | LOOP CLAMPS .....  | 103-1        |
|          | ASSORTED FITTINGS AND UNIONS .....   | 104-1        |
|          | BRAKE SHOES .....  | 105-1        |
|          |  | 77           |
|          |  | 78           |
|          |  | 79           |
|          |  | 80           |
|          |  | 81           |
|          |  | 82           |
|          |  | 83           |
|          |  | 84           |
|          |  | 85           |
|          |  | 86           |
|          |  | 87           |
|          |  | 88           |
|          |  | 89           |
|          |  | 90           |
|          |  | 91           |
|          |  | 92           |
|          |  | 93           |
|          |  | 94           |
|          |  | 95           |
|          |  | 96           |
|          |  | 97           |
|          |  | 98           |
|          |  | 99           |
|          |  | 100          |
|          |  | 101          |
|          |  | 102          |
|          |  | 103          |
|          |  | 104          |
|          |  | 105          |

TABLE OF CONTENTS

|   | Page  | Illus<br>Fig |
|---|-------|--------------|
| 1209-AIR COMPRESSOR ASSEMBLY .....                      | 106-1 |              |
| AIR COMPRESSOR AND RELATED PARTS .....                  | 106-1 | 106          |
| AIR COMPRESSOR HOSES AND FITTINGS .....                 | 107-1 | 107          |
| ALCOHOL INJECTOR AND RELATED PARTS .....                | 108-1 | 108          |
| 1211-TRAILER BRAKE CONNECTIONS AND CONTROLS .....       | 109-1 |              |
| TRAILER HOSE ASSEMBLY .....                             | 109-1 | 109          |
| SERVICE AND DELIVERY VALVE ASSEMBLY .....               | 110-1 | 110          |
| BRAKE HAND CONTROL VALVE AND AIR MANIFOLD .....         | 111-1 | 111          |
| FRONT TOWING GLADHANDS AND ATTACHING PARTS .....        | 112-1 | 112          |
| REAR TOWING GLADHANDS AND ATTACHING PARTS .....         | 113-1 | 113          |
| QUICK RELEASE VALVE AND ATTACHING PARTS .....           | 114-1 | 114          |
| <br>GROUP 13  |       |              |
| WHEELS  |       |              |
| 1311-WHEEL ASSEMBLY .....                               | 115-1 |              |
| FRONT BRAKE DRUM AND HUB ASSEMBLY .....                 | 115-1 | 115          |
| PUSHER BRAKE DRUM EXPLODED VIEW .....                   | 116-1 | 116          |
| TANDEM HUB AND DRUM ASSEMBLY .....                      | 117-1 | 117          |
| WHEEL ASSEMBLY .....                                    | 118-1 | 118          |
| 1313-TIRES, TUBES, TIRE CHAINS .....                    | 119-1 |              |
| PNEUMATIC TIRE AND INNER TUBE .....                     | 119-1 | 119          |
| <br>GROUP 14  |       |              |
| STEERING  |       |              |
| 1401.MECHANICAL STEERING GEAR ASSEMBLY .....            | 120-1 |              |
| STEERING WHEEL AND RELATED PARTS .....                  | 120-1 | 120          |
| STEERING WHEEL JACKET AND RELATED PARTS .....           | 121-1 | 121          |
| STEERING SPLINED SHAFT AND RELATED PARTS .....          | 122-1 | 122          |
| STEERING DRAG LINK AND POWER STEERING BOOSTER .....     | 123-1 | 123          |
| STEERING DRAG LINK WITHOUT POWER STEERING BOOSTER ..... | 124-1 | 124          |
| TIE ROD AND RELATED PARTS .....                         | 125-1 | 125          |
| REMOTE CONTROL STEERING LEVER AND RELATED PARTS .....   | 126-1 | 126          |
| STEERING GEAR HOUSING AND RELATED PARTS .....           | 127-1 | 127          |
| 1410-HYDRAULIC PUMP OR FLUID MOTOR ASSEMBLY .....       | 128-1 |              |
| POWER STEERING PUMP AND RELATED PARTS .....             | 128-1 | 128          |
| 1411-HOSES, LINES, FITTINGS .....                       | 129-1 |              |
| POWER STEERING HOSES AND FITTINGS .....                 | 129-1 | 129          |
| 1412-HYDRAULIC OR AIR CYLINDERS .....                   | 130-1 |              |
| POWER STEERING BOOSTER AND RELATED PARTS .....          | 130-1 | 130          |
| CONTROL END HOUSING AND RELATED PARTS .....             | 131-1 | 131          |
| 1413-TANKS, Reservoirs .....                            | 132-1 |              |
| RESERVOIR AND FILTER ASSEMBLY .....                     | 132-1 | 132          |
| <br>GROUP 15  |       |              |
| FRAME, TOWING ATTACHMENTS AND DRAWBARS                  |       |              |
| 1501-FRAME ASSEMBLY .....                               | 133-1 |              |
| BUMPER AND FRAME ASSEMBLY .....                         | 133-1 | 133          |
| 1503-PINTLE AND TOWING ATTACHMENTS .....                | 134-1 |              |
| FRONT TOW BAR AND RELATED PARTS .....                   | 134-1 | 134          |
| REAR TOW BAR AND PINTLE HOOK .....                      | 135-1 | 135          |
| 1504-SPARE WHEEL CARRIER .....                          | 136-1 |              |
| SPARE TIRE WINCH AND RELATED PARTS .....                | 136-1 | 136          |
| 1506-FIFTH WHEEL .....                                  | 137-1 |              |
| FIFTH WHEEL EXPLODED VIEW .....                         | 137-1 | 137          |
| <br>GROUP 16  |       |              |
| SPRINGS AND SHOCK ABSOBERS                              |       |              |
| 1601-SPRINGS .....                                      | 138-1 |              |
| SPRING LINK AND PRESSURE PLATE FOR SPRINGS .....        | 138-1 | 138          |
| PUSHER AXLE AIR CONTROL VALVE ASSEMBLY .....            | 139-1 | 139          |
| VALVE HANDLE EXPLODED VIEW .....                        | 140-1 | 140          |
| TOP SADDLE PLATE AND RELATED PARTS .....                | 141-1 | 141          |

TABLE OF CONTENTS

|  | Page  | Illus<br>Fig |
|--|-------|--------------|
| 1604-SHOCK ABSORBER EQUIPMENT .....                              | 142-1 |              |
| SHOCK ABSORBER .....   | 142-1 | 142          |
| 1605-TORQUE, RADIUS AND STABILIZER ROD .....                     | 143-1 |              |
| TORQUE ROD .....   | 143-1 | 143          |
| <br>GROUP 18   |       |              |
| BODY, CAB AND HOOD   |       |              |
| 1801-BODY, CAB AND HOOD ASSEMBLIES .....                         | 144-1 |              |
| RADIATOR AND HEADLIGHT GUARD .....                               | 144-1 | 144          |
| ENGINE HOOD AND RELATED PARTS .....                              | 145-1 | 145          |
| ENGINE SIDE COVERS AND RELATED PARTS .....                       | 146-1 | 146          |
| CAB MOUNT PLATE AND RELATED PARTS .....                          | 147-1 | 147          |
| SPLASH GUARD AND RELATED PARTS .....                             | 148-1 | 148          |
| 1806-UPHOLSTERY SEATS AND CARPETS .....                          | 149-1 |              |
| DRIVER'S SEAT SUPPORT AND RELATED PARTS .....                    | 149-1 | 149          |
| FLOOR MAT .....  | 150-1 | 150          |
| PASSENGER SEAT .....   | 151-1 | 151          |
| DRIVER SEAT .....  | 152-1 | 152          |
| SEAT, ADJUSTERS, AND RELATED PARTS .....                         | 153-1 | 153          |
| BASE ASSEMBLY AND RELATED PARTS .....                            | 154-1 | 154          |
| <br>GROUP 20   |       |              |
| WINCH, CAPSTAN, WINDLASS POWER CONTROL UNIT<br>AND POWER TAKEOFF |       |              |
| 2001-CAPSTAN, WINDLASS AND WINCH ASSEMBLY .....                  | 155-1 |              |
| WINCH ASSEMBLY .....   | 155-1 | 155          |
| WINCH CABLE DRUM AND RELATED PARTS .....                         | 156-1 | 156          |
| AIR REGULATING VALVE .....                                       | 157-1 | 157          |
| VALVE RELIEF SLEEVE AND RELATED PARTS .....                      | 158-1 | 158          |
| POWER TAKE OFF CONTROL VALVE AND RELATED PARTS .....             | 159-1 | 159          |
| WINCH CONTROL .....  | 160-1 | 160          |
| RESERVOIR ASSEMBLY AND RELATED PARTS .....                       | 161-1 | 161          |
| RESERVOIR ASSEMBLY EXPLODED VIEW .....                           | 162-1 | 162          |
| POWER TAKE OFF TO WINCH SPLINED SHAFT ASSEMBLY .....             | 163-1 | 163          |
| SPLIT FLANGE INLET AND OUTLET AND RELATED PARTS .....            | 164-1 | 164          |
| ADAPTERS FOR HYDRAULIC WINCH .....                               | 165-1 | 165          |
| <br>GROUP 22   |       |              |
| BODY CHASSIS AND ACCESSORY ITEMS                                 |       |              |
| 2202-ACCESSORY ITEMS .....                                       | 166-1 |              |
| SUPPLY VALVE AIR CONNECTORS AND RELATED PARTS .....              | 166-1 | 166          |
| WINDSHIELD WASHER ASSEMBLY .....                                 | 167-1 | 167          |
| WIPER ASSEMBLY .....   | 166-1 | 168          |
| MIRROR ASSEMBLY AND RELATED PARTS .....                          | 169-1 | 169          |
| REARVIEW MIRROR ASSEMBLY .....                                   | 170-1 | 170          |
| AIR HORN VALVE AND RELATED PARTS .....                           | 171-1 | 171          |
| AIR HORN AND RELATED PARTS .....                                 | 172-1 | 172          |
| HEATER, DEFROSTER AND RELATED PARTS .....                        | 173-1 | 173          |
| DEFLECTOR HEATER AND RELATED PARTS .....                         | 174-1 | 174          |
| 221 O-DATA PLATES AND INSTRUCTION HOLDERS .....                  | 175-1 |              |
| WARNING AND ASSORTED DECALS .....                                | 175-1 | 175          |
| INSTRUCTION AND INFORMATION DECALS .....                         | 176-1 | 176          |
| WARRANTY AND INSTRUCTION DECALS .....                            | 177-1 | 177          |
| <br>GROUP 47   |       |              |
| GAGES (NON ELECTRICAL) WEIGHING AND MEASURING DEVICES            |       |              |
| 4702-GAGES, MOUNTINGS, LINES AND FITTINGS .....                  | 178-1 |              |
| AIR PRESSURE GAGE .....  | 178-1 | 178          |

TABLE OF CONTENTS

|  | Page   | Illus<br>Fig |
|--|--------|--------------|
| <b>GROUP 94</b>                                |        |              |
| REPAIR KITS                                    |        |              |
| 9401-REPAIR KITS .....                         | KIT-1  |              |
| KITS .....                                     | KIT-1  | KIT          |
| <b>GROUP 95</b>                                |        |              |
| GENERAL USE STANDARDIZED PARTS                 |        |              |
| 9501-BULK MATERIEL .....                       | BULK-1 |              |
| BULK MATERIEL .....                            | BULK-1 | BULK         |
| <br><b>SECTION III. SPECIAL TOOLS</b>          |        |              |
| <b>GROUP 26</b>                                |        |              |
| TOOLS AND TEST EQUIPMENT                       |        |              |
| 2604-SPECIAL TOOLS .....                       | 179-1  |              |
| ORGANIZATIONAL SPECIAL TOOLS .....             | 179-1  | 179          |
| <br><b>SECTION IV. CROSS-REFERENCE INDEXES</b> |        |              |
| NATIONAL STOCK NUMBER INDEX                    | I-1    |              |
| PART NUMBER INDEX                              | I-1    |              |
| FIGURE AND ITEM NUMBER INDEX                   | 1-20   |              |
|  | 1-64   |              |



# UNIT MAINTENANCE

## REPAIR PARTS AND SPECIAL TOOLS LIST

### SECTION 1. INTRODUCTION

#### 1. Scope.

This RPSTL lists and authorizes spares and repair parts; special tools; special test, measurement, and diagnostic equipment (TMDE); and other special support equipment required for performance of Unit Maintenance of the Truck, Tractor, Commercial Heavy Equipment Transporter. It authorizes the requisitioning, issue, and disposition of spares, repair parts and special tools as indicated by the source, maintenance and recoverability (SMR) codes.

#### 2. General.

In addition to Section 1. Introduction, this Repair Parts and Special Tools List is divided into the following sections:

a. *Section II. Repair Parts List.* A list of spares and repair parts authorized by this RPSTL for use in the performance of maintenance. The list also includes parts which must be removed for replacement of the authorized parts. Parts lists are composed of functional groups in ascending alphanumeric sequence, with the parts in each group listed in ascending figure and item number sequence. Bulk materials are listed in item name sequence. Repair kits are listed separately in their own functional group within Section II. Repair parts for repairable special tools are also listed in the section. Items listed are shown on the associated illustration(s)/figure(s).

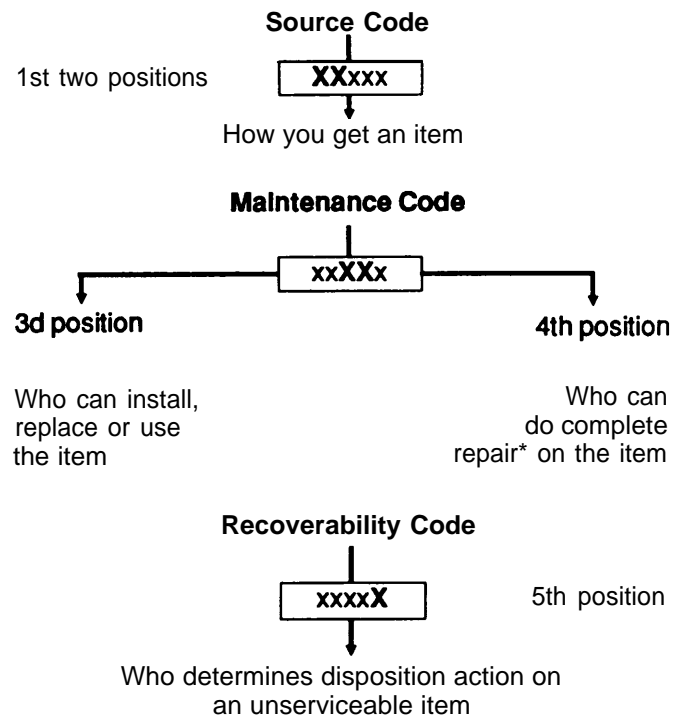
b. *Section III. Special Tools List.* A list of special tools, special TMDE, and other special support equipment authorized by this RPSTL (as indicated by Basis of Issue (BOI) information in DESCRIPTION AND USABLE ON CODE column) for the performance of maintenance.

c. *Cross-reference Indexes.* A list, in National Item Identification Number (NIIN) sequence, of all National stock numbered items appearing in the listing, followed by a list in alphanumeric sequence of all part numbers appearing; in the listings. National stock numbers and part numbers are cross-referenced to each illustration figure and item number appearance. The figure and item number index lists figure and item numbers in alphanumeric sequence and cross-references NSN, FSCM, and part numbers.

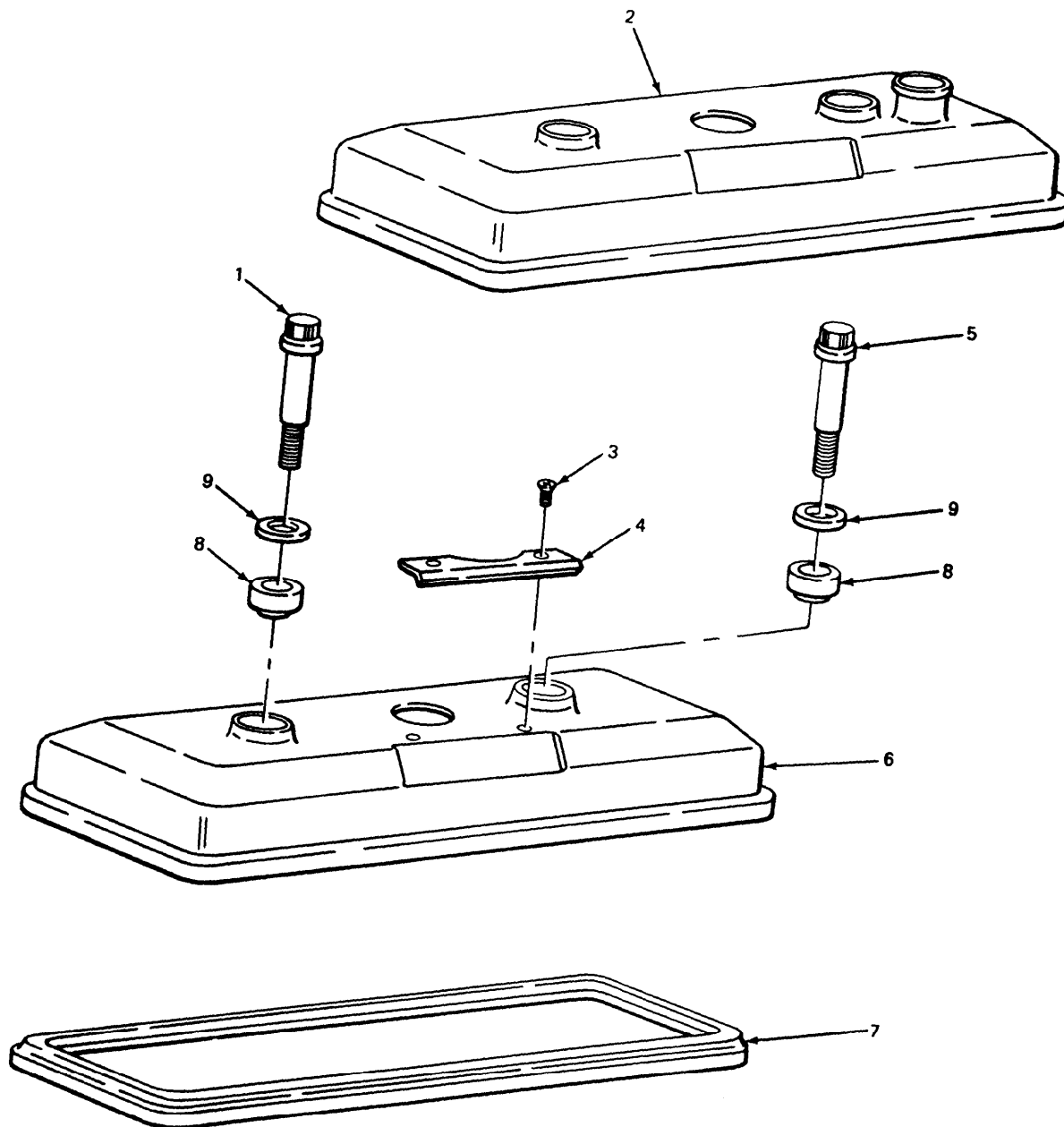
#### 3. Explanation of Columns (Sections II and III).

a. *ITEM NO. (Column (1)).* Indicates the number used to identify items called out in the illustration.

b. *SMR CODE (Column (2)).* The Source, Maintenance, and Recoverability (SMR) code is a 5-position code containing supply/requisitioning information, maintenance category authorization criteria, and disposition instructions, as shown in the following breakout:



\**Complete Repair.* Maintenance capacity, capability, and authority to perform all corrective maintenance tasks of the "Repair" function in a use/user environment in order to restore serviceability to a failed item.

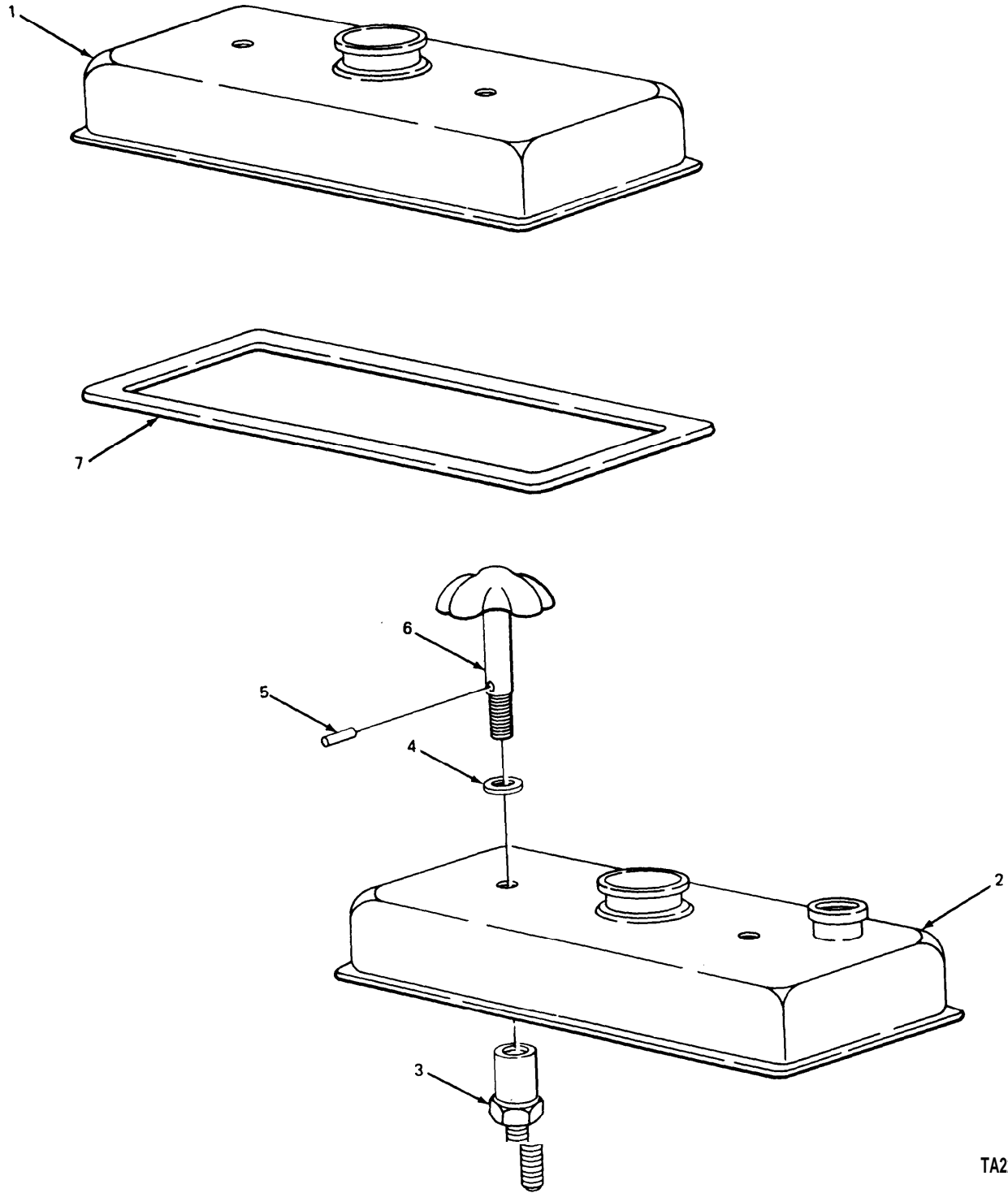


TA203612

FIGURE I. ROCKER COVERS AND RELATED PARTS FOR THE LATE T AND TA ENGINES.

| (1)<br>ITEM<br>NO.  | (2)<br>SMR<br>CODE | (3)<br>FSCM | (4)<br>PART<br>NUMBER | (5)<br>DESCRIPTION AND USABLE ON CODE (UOC)   | (6)<br>QTY |
|---|--------------------|-------------|-----------------------|---|------------|
| GROUP 01 ENGINE   |                    |             |                       |   |            |
| GROUP 0105 VALVES, CAMSHAFTS, AND<br>TIMING SYSTEMS                     |                    |             |                       |   |            |
| FIG. 1 ROCKER COVERS AND RELATED<br>PARTS FOR THE LATE T AND TA ENGINES |                    |             |                       |   |            |
| 1   | PAOZZ              | 72582       | 5104015               | BOLT FRONT APPLICABLE TO CAST<br>ROCKER COVERS 5103572 AND 5103574<br>PART OF KIT P/N 5149511                           | 2          |
| 2   | PAOZZ              | 72582       | 5103574               | COVER,ENGINE POPPET RIGHT BANK,(W/<br>OIL FILLER) CAST COVER,REPLACES<br>STAMPED COVER 5132550                          | 1          |
| 3   | PAOZZ              | 96906       | MS21318-41            | SCREW,DRIVE RETAINER,OPTION PLATE<br>APPLICABLE TO CAST ROCKER COVERS<br>5103572 AND 5103574 PART OF KIT P/N<br>5149511 | 4          |
| 4   | PAOZZ              | 72582       | 5106857               | PLATE,RETAINER,IDENT ROCKER PART OF<br>KIT P/N 5149511  | 2          |
| 5   | KFOZZ              | 72582       | 5104020               | BOLT,SHOULDER REAR APPLICABLE TO<br>CAST ROCKER COVERS 5103572 AND<br>5103574 PART OF KIT P/N 5149511                   | 2          |
| 6   | PAOZZ              | 72582       | 5103572               | COVER,ENGINE POPPET LEFT BANK,CAST<br>COVER,REPLACES STAMPED COVER 5148878  | 1          |
| 7   | PAOZZ              | 72582       | 5104081               | GASKET APPLICABLE TO CAST ROCKER<br>COVERS 5103572 AND 5103574 PART OF<br>KIT P/N 5149511                               | 2          |
| 8   | PAOZZ              | 72582       | 5104515               | MOUNT,RESILIENT APPLICABLE TO CAST<br>ROCKER COVERS 5103572 AND 5103574<br>PART OF KIT P/N 5149511                      | 4          |
| 9   | PAOZZ              | 72582       | 5104514               | WASHER,FLAT APPLICABLE TO CAST<br>ROCKER COVERS 5103572 AND 5103574<br>PART OF KIT P/N 5149511                          | 4          |

END OF FIGURE



TA221788

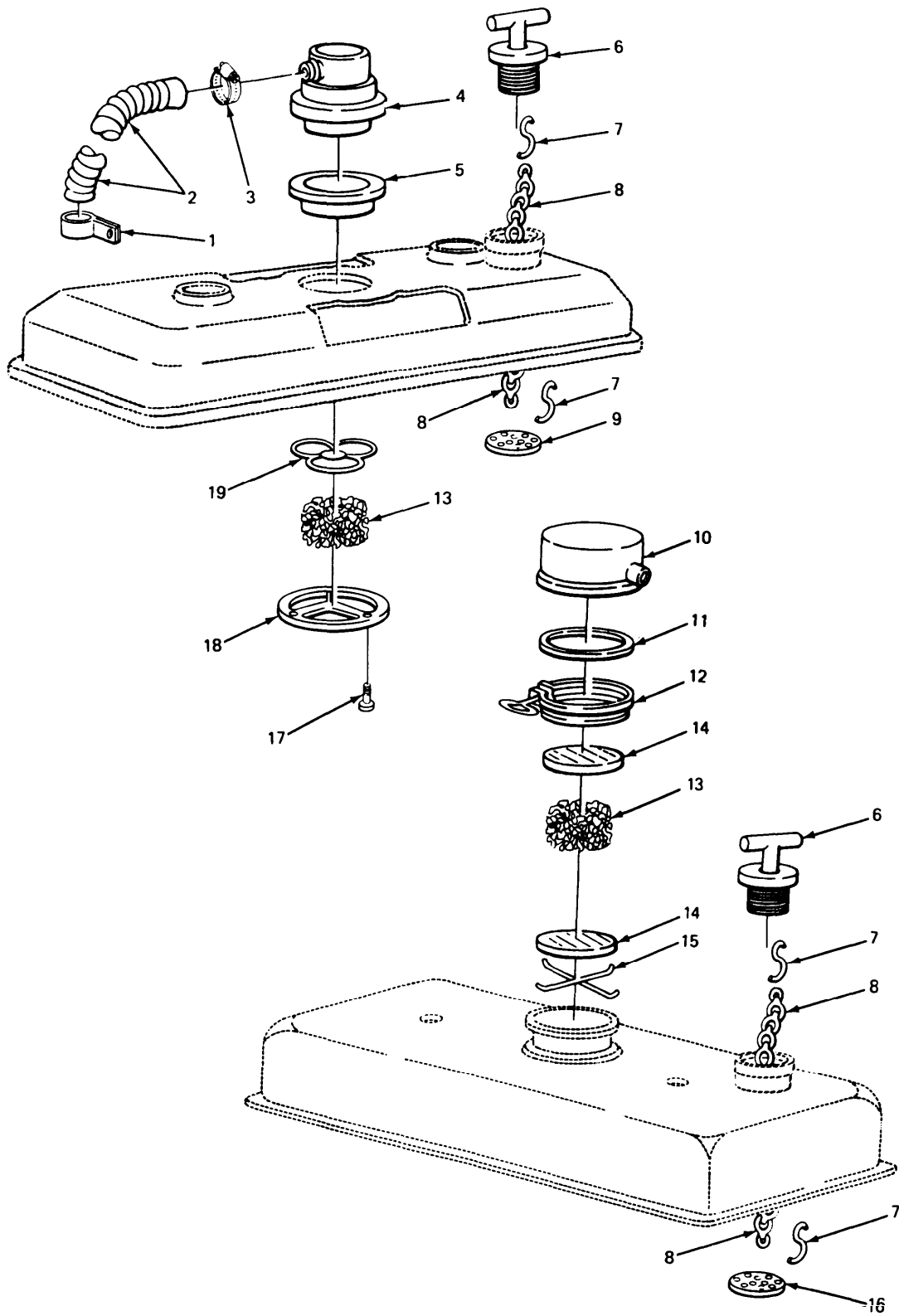
FIGURE 2. COVERS AND RELATED PARTS FOR THE EARLY T ENGINE

## SECTION II

TM9-2320-270-20P

| (1)<br>ITEM<br>NO.   | (2)<br>SMR<br>CODE | (3)<br>FSCM | (4)<br>PART<br>NUMBER | (5)<br>DESCRIPTION AND USABLE ON CODE (UOC)   | (6)<br>QTY |
|--|--------------------|-------------|-----------------------|---|------------|
| GROUP 0105 VALVES, CAMSHAFTS, AND<br>TIMING SYSTEMS              |                    |             |                       |   |            |
| FIG. 2 ROCKER COVERS AND RELATED<br>PARTS FOR THE EARLY T ENGINE |                    |             |                       |   |            |
| 1  | PFOZZ              | 72582       | 5132550               | PARTS KIT,ROCKER AR   | 1          |
| 2  | PFOZZ              | 72582       | 5148878               | COVER,ENGINE POPPET WITH OIL FILLER   | 1          |
| 3  | PAOZZ              | 72582       | 5157192               | STUD,EXTENSION  | 4          |
| 4  | PAOZZ              | 72582       | 5150333               | WASHER,FLAT   | 4          |
| 5  | PAOZZ              | 96906       | MS16562-33            | PIN,SPRING THUMB SCREW  | 4          |
| 6  | PAOZZ              | 72582       | 5157194               | THUMBSCREW ROCKER COVER TO<br>CYLINDER HEAD STUDS,LEFT BANK(2),<br>RIGHT BANK(20) APPLICABLE TO<br>STAMPED ROCKER COVERS 5148878 AND<br>5132550 | 4          |
| 7  | PAOZZ              | 72582       | 5143406               | GASKET APPLICABLE TO STAMPED<br>ROCKER COVERS 5148878 AND 5132550   | 2          |

END OF FIGURE



TA203617

FIGURE 3. OIL FILTER, BREATHER, AND RELATED PARTS.

## SECTION II

TM9-2320-270-20P

| (1)<br>ITEM<br>NO.                             | (2)<br>SMR<br>CODE | (3)<br>FSCM | (4)<br>PART<br>NUMBER | (5)<br>DESCRIPTION AND USABLE ON CODE (UOC)  | (6)<br>QTY |
|--|--------------------|-------------|-----------------------|--|------------|
| GROUP 0106 ENGINE LUBRICATING SYSTEM           |                    |             |                       |  |            |
| FIG. 3 OIL FILTER, BREATHER, AND RELATED PARTS |                    |             |                       |  |            |
| 1  | PFOZZ              | 84971       | TA720-S8              | CLAMP, LOOP BREATHER HOSE MOUNTING   | 2          |
| 2  | MOOZZ              | 45152       | 60580AX58             | HOSE, AIR DUCT MAKE FROM HOSE, P/N 60580AX   | 1          |
| 3  | PFOZZ              | 45152       | 306BX20               | CLAMP, LOOP  | 2          |
| 4  | PAOZZ              | 72582       | 5103648               | RETAINER, BREATHER APPLICABLE TO CAST ROCKER COVER 5103572 AND 5103574   | 2          |
| 5  | KFOZZ              | 72582       | 5103646               | SEAL, PLAIN APPLICABLE TO CAST ROCKER COVER 5103572 AND 5103574  | 2          |
| 6  | PAOZZ              | 72582       | 5117362               | PART OF KIT P/N 5149513  | 1          |
| 7  | PAOZZ              | 72582       | 5146248               | CAP, FILLER OPENING FILLER, OIL, ROCKER COVER  | 2          |
| 7  | PAOZZ              | 72582       | 5107979               | HOOK USE (2) ON EARLY 8V-9 2T AND (1) ON LATE 8V92T AND 8V92TA   | 1          |
| 8  | PAOZZ              | 72582       | 5113825               | HOOK, CHAIN, S LATE 8V-92T AND 8V-92TA   | 1          |
| 9  | PAOZZ              | 72582       | 5103943               | CHAIN, CAP OIL FILLER CAP  | 1          |
| 10   | PAOZZ              | 18265       | P15383                | STRAINER, SEDIMENT OIL FILLER, APPLICABLE TO CAST ROCKER COVERS 5103572 AND 5103574                                  | 1          |
| 11   | PAOZZ              | 72582       | 5144038               | COVER ASSEMBLY, PRA APPLICABLE TO STAMPED ROCKER COVERS 5148878 AND 5132550  | 2          |
| 12   | PFOZZ              | 06116       | 2443793               | GASKET APPLICABLE TO STAMPED ROCKER COVERS 5148878 AND 5132550   | 2          |
| 13   | PAOZZ              | 72582       | 5132042               | CLAMP ASSEMBLY APPLICABLE TO STAMPED ROCKER COVERS 5148878 AND 5132550   | 2          |
| 14   | PAOZZ              | 72582       | 5101760               | WIRE FABRIC APPLICABLE TO STAMPED ROCKER COVERS 5148878 AND 5132550  | 2          |
| 15   | PAOZZ              | 72582       | 5131951               | FILTERING DISK, FLUI BREATHER, APPLICABLE TO BOTH CAST AND STAMPED ROCKER COVERS PART OF KIT P/N 5149513             | 2          |
| 16   | PAOZZ              | 72582       | 5150147               | RETAINER, COVER APPLICABLE TO STAMPED ROCKER COVERS 5148878 AND 5132550  | 1          |
| 17   | PAOZZ              | 72582       | 5103642               | STRAINER ELEMENT, SE APPLICABLE TO STAMPED ROCKER COVERS 5148878 AND 5132550   | 6          |
| 18   | PAOZZ              | 72582       | 5103647               | SCREW, CAP, HEXAGON H RETAINER BREATHER APPLICABLE TO CAST ROCKER COVERS 5103572 AND 5103574 PART OF KIT P/N 5149513 | 2          |
|  |                    |             |                       | RETAINER, ROCKER APPLICABLE TO CAST ROCKER COVERS 5103572 AND 5103574 PART OF KIT P/N 5149513                        | 2          |

## SECTION II

TM9-2320-270-20P

| (1)<br>ITEM<br>NO. | (2)<br>SMR<br>CODE | (3)<br>FSCM | (4)<br>PART<br>NUMBER | (5)<br>DESCRIPTION AND USABLE ON CODE (UOC)  | (6)<br>QTY |
|--------------------|--------------------|-------------|-----------------------|--|------------|
| 19                 | PAOZZ              | 72582       | 5103636               | RETAINER,BREATHER APPLICABLE TO<br>CAST ROCKER COVERS 5103572 AND<br>5103574 PART OF KIT P/N 5149513 | 2          |

END OF FIGURE