

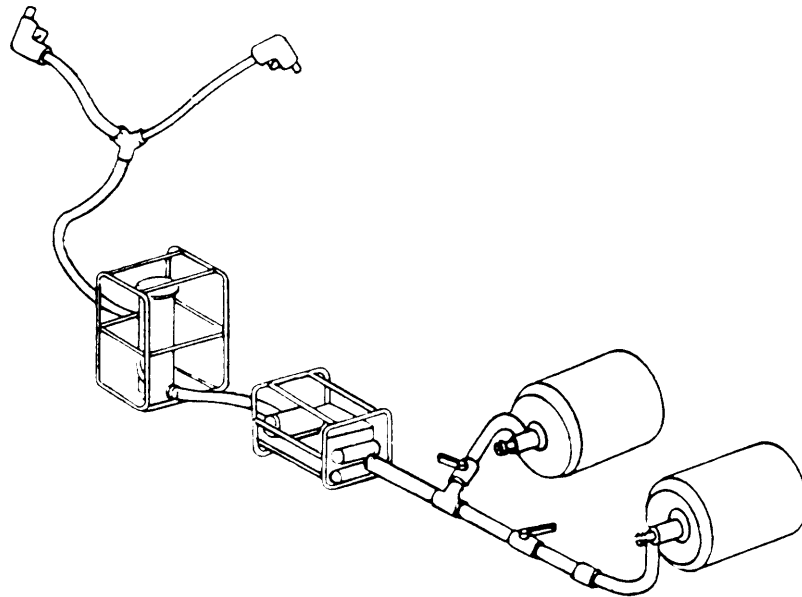
***TM 10-4930-229-12&P**

TECHNICAL MANUAL

**OPERATOR AND UNIT MAINTENANCE MANUAL
(INCLUDING REPAIR PARTS AND SPECIAL TOOLS LIST)
FOR**

**FORWARD AREA REFUELING
EQUIPMENT (FARE)
(AMERICAN AIR FILTER MODEL RFE 1000)
NSN 4930-00-1 33-3041**

Approved for public release; Distribution is unlimited.



● This manual supersedes TM 5-4930-229-12&P, dated 7 January 1975, including all changes.

**HEADQUARTERS, DEPARTMENT OF THE ARMY
26 SEPTEMBER 1991**

**Operator and Unit Maintenance Manual
(including Repair Parts and Special Tools Lists)
for
FORWARD AREA REFUELING EQUIPMENT (FARE)
(MODEL RFE 1000, NSN 4930-00-133-3041)
Current as of date is 28 June 1991**

REPORTING ERRORS AND RECOMMENDING IMPROVEMENTS

You can help improve this manual. If you find any mistakes or if you know of a way to improve the procedures, please let us know. Mail your letter, DA Form 2028 (Recommended Changes to Publications and Blank Forms), or DA Form 2028-2 located in back of this manual direct to: Commander, US Army Aviation and Troop Command, ATTN: AMSAT-I-MP, 4300 Goodfellow Blvd., St. Louis, MO 631 20-1 798. A reply will be furnished to you.

Distribution STATEMENT A: Approved for public release; distribution is unlimited

TABLE OF CONTENTS

	Page
CHAPTER 1	INTRODUCTION 1-1
	OVERVIEW 1-1
Section I	General Information 1-1
Section II	Equipment Description and Data..... 1-3
Section III	Principles of Operation 1-14
CHAPTER 2	OPERATING INSTRUCTIONS 2-1
	OVERVIEW 2-1
Section I	Description and Use of Operator Controls and Indicators 2-1
Section II	Preventive Maintenance Checks and Services (PMCS) 2-5
Section III	Operation Under Usual Conditions.. . . . 2-9
Section IV	Operation Under Unusual Conditions. 2-15
CHAPTER 3	OPERATOR MAINTENANCE INSTRUCTIONS 3-1
	OVERVIEW 3-1
Section I	Lubrication Instructions 3-1
Section II	Operator Troubleshooting 3-1
Section III	Operator Maintenance 3-4

* This manual supersedes TM 5-4930-229-12&P, dated 7 January 1975, including all changes.

TABLE OF CONTENTS (cont)

	Page	Illust/ Figure
CHAPTER 4	UNIT MAINTENANCE INSTRUCTIONS	4-1
	OVAERVIEW	4-1
Section I	Repair Parts, Special Tools, Test, Measurement and Diagnostic Equipment (TMDE) and Support Equipment	4-1
Section II	Service Upon Receipt	4-1
Section III	Unit Preventive Maintenance Checks and Services (PMCS)	4-2
Section IV	Unit Troubleshooting	4-3
Section V	Unit Maintenance Procedures	4-6
Section VI	Preparation for Shipment or Storage	4-35
APPENDIX A	REFERENCES	A-1
APPENDIX B	MAINTENANCE ALLOCATION CHART	B-1
APPENDIX C	COMPONENTS OF END ITEM AND BASIC ISSUE ITEMS LISTS	C-1
APPENDIX D	ADDITIONAL AUTHORIZATION LIST	D-1
APPENDIX E	EXPENDABLE/DURABLE SUPPLIES AND MATERIALS LIST	E-1
APPENDIX F	REPAIR PARTS AND SPECIAL TOOLS LIST	F-1
Section I	Introduction,	F-1
Section II	Parts Lists	F-1
Group 01	Suction Hose Kit	F-8 F-1
	Hose and Component Kit.....	F-10 F-2
	Butterfly Valve Assembly	F-12 F-3
	Tee Assembly	F-14 F-4
	Elbow Coupler Valve	F-16 F-5
	Adapter Assembly, 3 In. x 2 In. and Adapter Assembly, Male x Male	F-18 F-6
	Adapter Assembly, 4 In. x 2 In...	F-20 F-7
	Closed-Circuit Refueling Nozzle and Gravity-Feed Adapter	F-22 F-8
	Wye Fitting Assembly	F-24 F-9
	Water Detector Kit Adapter	F-26 F-10
	Frame Assembly	F-28 F-11
	Pump/Engine Assembly	F-30 F-12
	Filter-Separator Assembly	F-32 F-13
Index		Index 1

LIST OF ILLUSTRATIONS

Figure Number	Title	Page
1-1	Typical Layout of FARE	1-2
1-2	Pump/Engine Assembly	1-4
1-3	Filter/Separator Assembly	1-7
1-4	Discharge Hoses, Fittings and Frame Assembly	1-9
1-5	Suction Hose Kit	1-12
1-6	Collapsible Drum	1-13
1-7	Flow Diagram	1-15
2-1	Elbow Coupler Valve Control	2-1
2-2	Butterfly Valve Control	2-2
2-3	Filter/Separator Controls and Indicators	2-3
2-4	Two-Point Refueling Operation.	2-10
2-5	FARE Piping Diagram for Filling Operation	2-13
4-1	installing Band on Hose Assembly	4-9
4-2	GroundRod,Removal/installation	4-13
4-3	Butterfly Valve, Disassembly/Assembly	4-15
4-4	Butterfly Valve,Removal/installation	4-17
4-5	Elbow Coupler Valve, Disassembly/Assembly	4-19
4-6	Elbow Coupler Valve, Removal/Installation	4-20
4-7	Tee Fitting, Disassembly/Assembly	4-22
4-8	Adapter Assembly, Disassembly/Assembly	4-24
4-9	Adapter Assembly, Removal/Installation	4-24
4-10	Adapter Nozzle, Removal/Installation	4-26
4-11	Wye Fitting Assembly, Disassembly/Assembly	4-28
4-12	Wye Fitting Assembly, Removal/Installation	4-29
4-13	Water Detector Kit Adapter, Disassembly/Assembly	4-31
4-14	Water Detector Kit Adapter, Removal/installation	4-32
4-15	Frame Assembly, Removal/Installation	4-34

LIST OF TABLES

Table Number	Title	Page
2-1	Operator/Crew Preventive Maintenance Checks and Services (PMCS)	2-8
3-1	Operator Troubleshooting	3-2
4-1	Unit Preventive Maintenance Checks and Services (PMCS)	4-3
4-2	Unit Troubleshooting	4-4

CHAPTER 1

INTRODUCTION

	Page
OVERVIEW	1-1
Section I. General Information	1-1
Section II. Equipment Description and Data.	1-3
Section III Principles of Operation	1-14

OVERVIEW

This chapter includes general information common to all Army equipment and specific information pertinent to the equipment covered in this manual.

Section I. GENERAL INFORMATION

	Page
1-1 Scope	1-1
1-2 Maintenance Forms and Records	1-1
1-3 Destruction of Army Materiel to Prevent Enemy Use	1-1
1-4 Preparation for Storage or Shipment	1-3
1-5 Reporting of Equipment improvement Recommendations (EIR)	1-3

1-1. Scope. The scope of this manual is described in the following subparagraphs.

a. Type of Manual. This manual provides operator and unit and maintenance instructions for Forward Area Refueling Equipment (FARE) NSN 4930-00-133-3041. Included in these instructions are procedures forgetting up and operating the equipment under usual and unusual conditions as well as inspection, troubleshooting, repair and replacement of individual components and assemblies. This manual also provides a repair parts and special tools list in Appendix F.

b. Equipment Name. Forward Area Refueling Equipment, hereinafter referred to as FARE (figure 1-1)

c. Purpose of Equipment. FARE is used to transfer fuel from 500 gallon (1892.5 liter) collapsible drums to helicopters in forward combat areas. It can also be used to refuel fixed-wing aircraft and ground vehicles.

1-2. Maintenance Forms and Records. Department of the Army forms and procedures used for equipment maintenance will be those prescribed by DA PAM 738-750, The Army Maintenance Management System.

1-3. Destruction of Army Materiel to Prevent Enemy Use. For information and instructions on destruction of Army materiel to prevent enemy use, refer to TM 750-244-3, Procedures for Destruction of Equipment to Prevent Enemy Use.

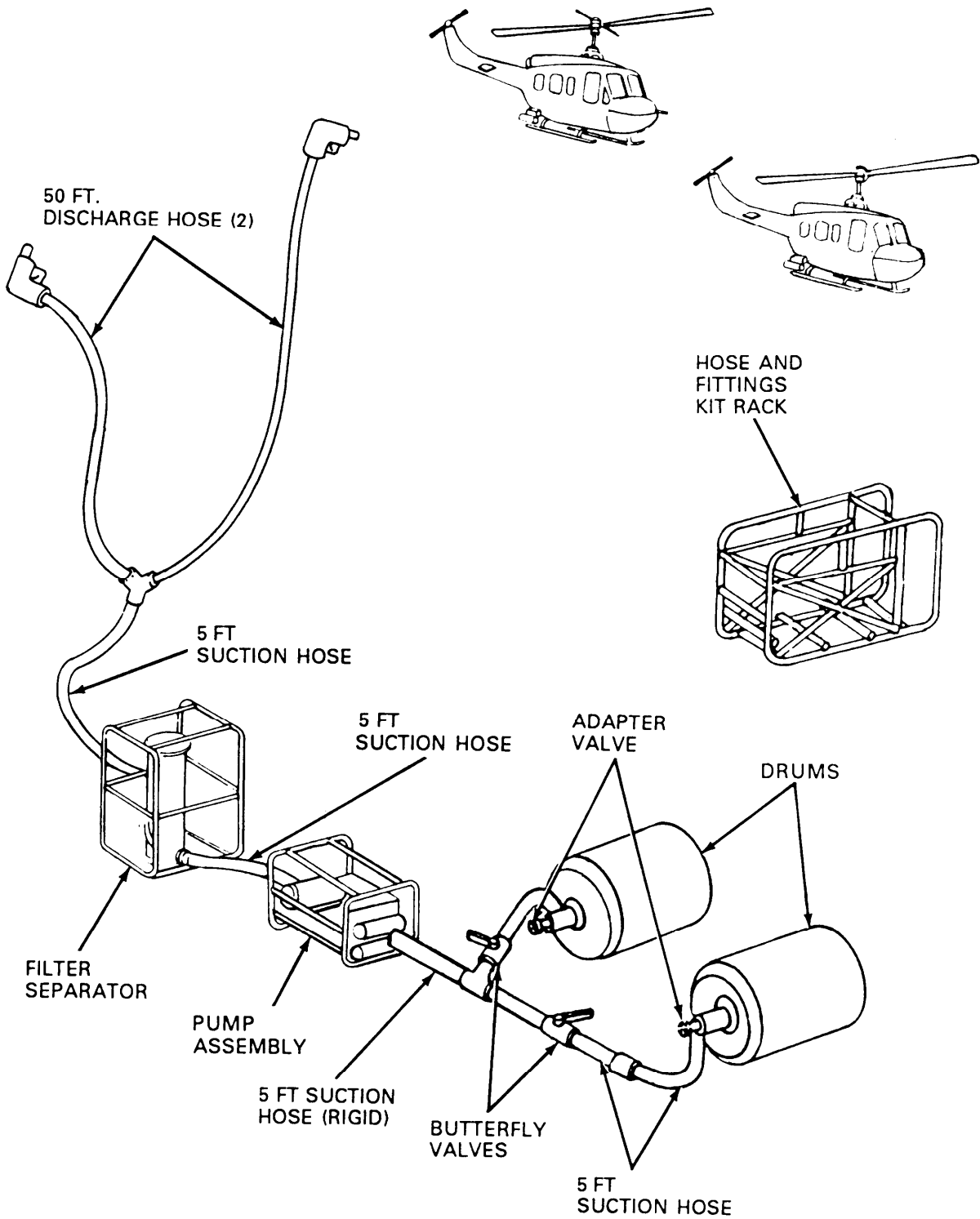


Figure 1-1. Typical Layout of FARE.