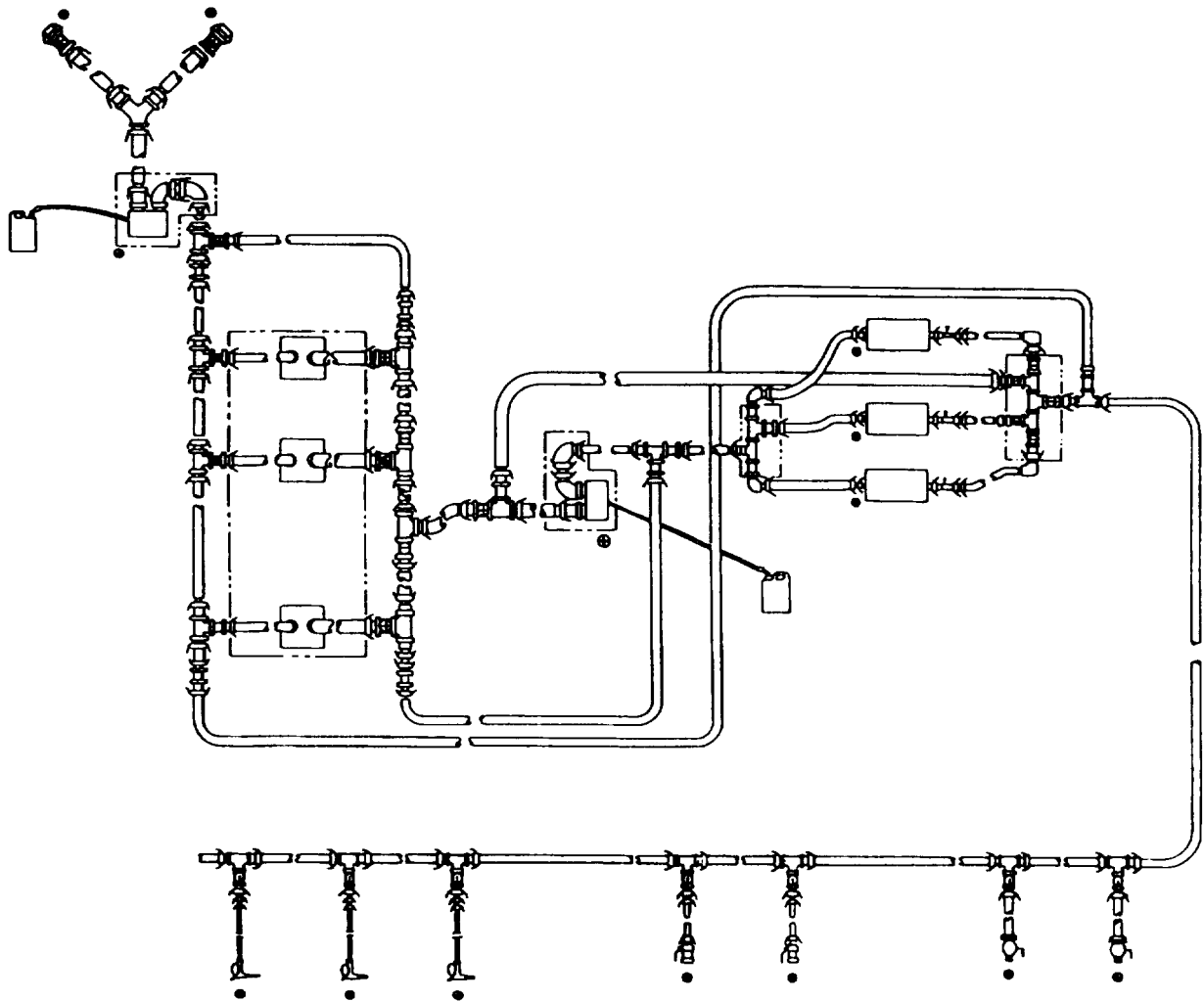


UNIT, AND DIRECT SUPPORT MAINTENANCE  
REPAIR PARTS AND SPECIAL TOOLS LIST FOR  
ARCTIC FUELING SYSTEM SUPPLY POINT (AFSSP)

P/N: 13228E1850

NSN: 4930-01-355-9582



Distribution Statement A: Approved for public release; distribution is unlimited.

HEADQUARTERS, DEPARTMENT OF THE ARMY

28 FEBRUARY 1997

TECHNICAL MANUAL

NO. 10-4930-241-23P

HEADQUARTERS  
DEPARTMENT OF THE ARMY  
WASHINGTON, D.C., 28 FEBRUARY 1997

UNIT AND DIRECT SUPPORT MAINTENANCE

REPAIR PARTS AND SPECIAL TOOLS LIST

ARCTIC FUELING SYSTEM SUPPLY POINT (AFSSP)

P/N: 13228E1850

NSN: 4930-01-355-9582

Current as of 22 May 1996

**REPORTING ERRORS AND RECOMMENDING IMPROVEMENTS**

You can help improve this manual. If you find any mistakes, or if you know of a way to improve there procedures, please let us know. Mail your letter or DA Form 2028 (Recommended Changes to Publications and Blank Forms), or DA Form 2028-2 located in the back of this manual directly to: Commander, US Army Aviation and Troop Command, Attn: AMSAT-I-MP, 4300 Goodfellow Blvd., St. Louis, MO 63120-1798. You may also submit your recommended changes by E-mail directly to <mpm%avma28@st-louis-emh7.army.mil>. A reply will be furnished directly to you. Instructions for sending an electronic 2028 may be found at the back of this manual immediately preceding the hard copy 2028.

Distribution Statement A: Approved for public release; distribution is unlimited.

**TABLE OF CONTENTS**

	Page	/	Illus. Figure
<b>Section I</b> Introduction .....	1		
<b>Section II</b> Repair Parts List			
Group 01 Module Arctic Fuel System Supply Point			
Module Arctic Fuel System Supply Point.....	1-1		1
Arctic Nozzle, Fuel and Oil Servicing .....	2-1		2
1 1/2 Inch Hose Assembly (25 foot).....	3-1		3
Reducer, 1.5 Inch Male by 2 Inch Female .....	4-1		4
Reducer, 4 Inch male by 4 Inch Female .....	5-1		5
4 Inch Fueling Manifold With One Valve .....	6-1		6
4 Inch Hose Assembly (25 Foot).....	7-1		7
Coupler, Tank to Hose 3 Inch Female .....	8-1		8
4 Inch Hose Assembly (50 Foot).....	9-1		9
3 Inch Hose Assembly (25 Foot).....	10-1		10
Reducer, 3 Inch Male by 4 Inch Female .....	11-1		11
4 Inch Ball Valve Assembly.....	12-1		12
4 Inch Fueling Manifold With Five Valves .....	13-1		13
4 Inch Elbow .....	14-1		14
Reducer, 4 Inch Male by 3 Inch Female .....	15-1		15

## TABLE OF CONTENTS - CONTINUED

	Page /	Illus. Figure
200 GPM Filter/Separator Assembly .....	16-1	16
Reducer, 6 Inch Male by 4 Inch Female .....	17-1	17
10 Inch Hose Assembly (10 Foot) .....	18-1	18
4 Inch Fueling Manifold With Three Valves .....	19-1	19
4 Inch Fueling Manifold With Two Valves .....	20-1	20
5 Gallon Fuel Can, Adapter, and Hose Assembly .....	21-1	21
600 GPM Pump Assembly .....	22-1	22
6 Inch Fueling Manifold With Two Valves .....	23-1	23
4 Inch Valve Section .....	24-1	24
6 Inch Fueling Manifold With One Valve .....	25-1	25
6 Inch Fueling Manifold With One Valve .....	26-1	26
6 Inch Fueling Manifold With Two Valves .....	27-1	27
6 Inch Fueling Manifold With One Valve .....	28-1	28
4 Inch Female Adapter .....	29-1	29
4 Inch Hose Assembly (20 Foot) .....	30-1	30
6 Inch Valve Section, .....	31-1	31
Wye Assembly, 6 Inch Male by 6 Inch Female by 6 Inch Female .....	32-1	32
Ground Clamp and Rod .....	33-1	33
Ground Cable Assembly .....	34-1	34
Accessory - Ground Cable Assemblies .....	35-1	35
Accessory - Reducer, 2 Inch Male by 3 Inch Female .....	36-1	36
Accessory - Reducer, 3 Inch Male by 2 Inch Female .....	37-1	37
Accessory - Reducer. 4 Inch Male by 2 Inch Female .....	38-1	38
Accessory - Reducer, 3 Inch Male by 6 Inch Female .....	39-1	39
Accessory - Reducer, 4 Inch Male by 2 Inch Female .....	40-1	40
Accessory -Reducer. 6 Inch Male by 4 Inch Female .....	41-1	41
Accessory - Reducer. 4 Inch Male by 3 Inch Female .....	42-1	42
Accessory - Reducer, 3 Inch Male by 4 Inch Female .....	43-1	43
Accessory - Adapters. 2 Inch Male by 2 Inch Male and 6 Inch Male by 6 Inch Male .....	44-1	44
Accessory - Elbow, 4 Inch .....	45-1	45
Accessory - Elbow, 3 Inch Male by 3 Inch Female .....	46-1	46
Accessory - Elbow, 6 Inch Male by 6 Inch Female .....	47-1	47
Accessory - Fire Extinguisher and Frame Assembly .....	48-1	48
Accessory - Ground.....	49-1	49
Accessory - Gravity Feed Adapter and Closed Circuit Refueling Nozzle.....	50-1	50
Accessory - D-1 Nozzle .....	51-1	51
Accessory - 4 Inch Hose Assembly (20 Foot) .....	52-1	52
Accessory - 1 1/2 Inch Hose Assembly (25 Foot) .....	53-1	53
Accessory - 3 Inch Hose Assembly (25 Foot) .....	54-1	54
Accessory - 6 Inch Hose Assembly (10 Foot).....	55-1	55
Accessory - 2 Inch Hose Assembly (50 Foot) .....	56-1	56
Accessory - NATO Rail Coupling and Tank Truck Coupling Set .....	57-1	57
Accessory - Seals, Strappings, Clamping Tools and Wrench.....	58-1	58
Group 09 Bulk Items.....	Bulk 1	

TABLE OF CONTENTS - CONTINUED

		Page /	Illus. Figure
<b>Section III</b>	Special Tools List (Not Applicable)		
<b>Section IV</b>	Indexes		
	National Stock Number Index.....	I-1	
	Part Number Index.....	I-4	

**UNIT, DIRECT SUPPORT AND GENERAL SUPPORT  
MAINTENANCE REPAIR PARTS AND SPECIAL TOOLS LIST**

**Section I. INTRODUCTION**

**1. SCOPE.** This RPSTL lists and authorizes spares and repair parts; special tools; special test, measurement, and diagnostic equipment (TMDE); and other special support equipment required for performance of Organizational Maintenance of the Lubricating and Servicing Unit. It authorizes the requisitioning, issue, and disposition of spares, repair parts and special tools as indicated by the source, maintenance and recoverability (SMR) codes.

**2. GENERAL.** In addition to this section, Introduction, this Repair Parts and Special Tools List is divided into the following sections:

**a. Section II. Repair Parts List.** A list of spares and repair parts authorized by this RPSTL for use in the performance of maintenance. This list also includes parts which must be removed for replacement of the authorized parts. Parts lists are composed of functional groups in ascending alphanumeric sequence, with the parts in each group listed in ascending figure and item number sequence. Bulk materials are listed in item name sequence. Items listed are shown in the associated illustration(s)/figure(s).

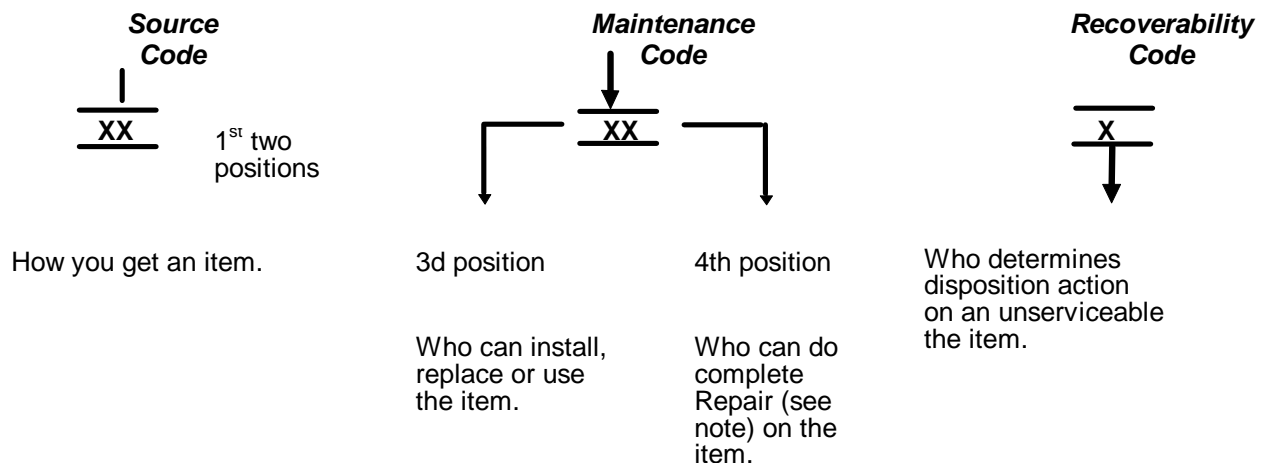
**b. Section III. Special Tools List.** A list of special tools, special TMDE, and other special support equipment authorized by this RPSTL (as indicated by Basis of Issue (BOI) information in DESCRIPTION AND USABLE ON CODE column) for the performance of maintenance.

**c. Section IV. Cross-Reference Index.** A list, in National Item Identification Number (NIIN) sequence, of all national stock numbered items appearing in the listing, followed by a list in alphanumeric sequence of all part numbers appearing in the listings. National stock numbers and part numbers are cross referenced to each illustration figure and item number appearance. The figure and item number index lists figure and item numbers in alphanumeric sequence and cross references NSN, FSCM and part number.

**3. EXPLANATION OF COLUMNS (SECTIONS II AND III).**

**a. ITEM NO. (Column (1)).** Indicates the number used to identify items called out in the illustration.

**b. SMR Code (Column (2)).** The Source, Maintenance, and Recoverability (SMR) code is a 5-position code containing supply/requisitioning information, maintenance category authorization criteria, and disposition instruction, as shown in the following breakout:



\*Complete Repair: Maintenance capacity, capability, and authority to perform all corrective maintenance tasks of the "Repair" function in a use/user environment in order to restore serviceability to a failed item.

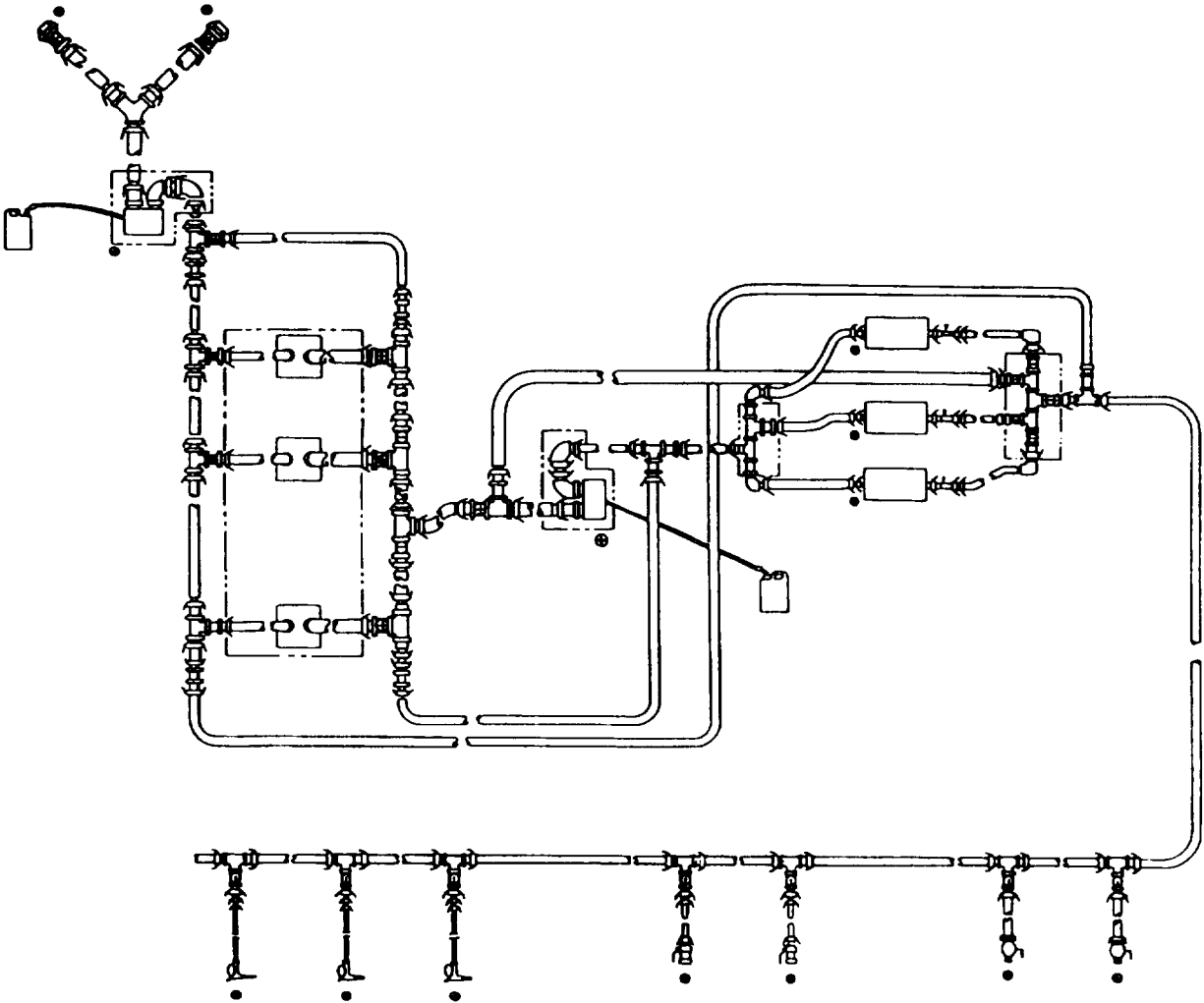


Figure 1. Module, Arctic Fuel System Supply Point (AFSSP)

SECTION II

TM 10-4930-241-23P

(1) ITEM NO	(2) SMR CODE	(3) NSN	(4) CAGEC	(5) PART NUMBER	(6) DESCRIPTION AND USABLE ON CODES (UOC)	(7) QTY
					GROUP 01 MODULE, ARCTIC FUEL SYSTEM SUPPLY POINT (AFSSP)	
					FIG. 1 MODULE, ARCTIC FUEL SYSTEM SUPPLY POINT (AFSSP)	
1	PEODD		97403	13228E1852	ARCTIC FUEL MODULE .....	2
END OF FIGURE						

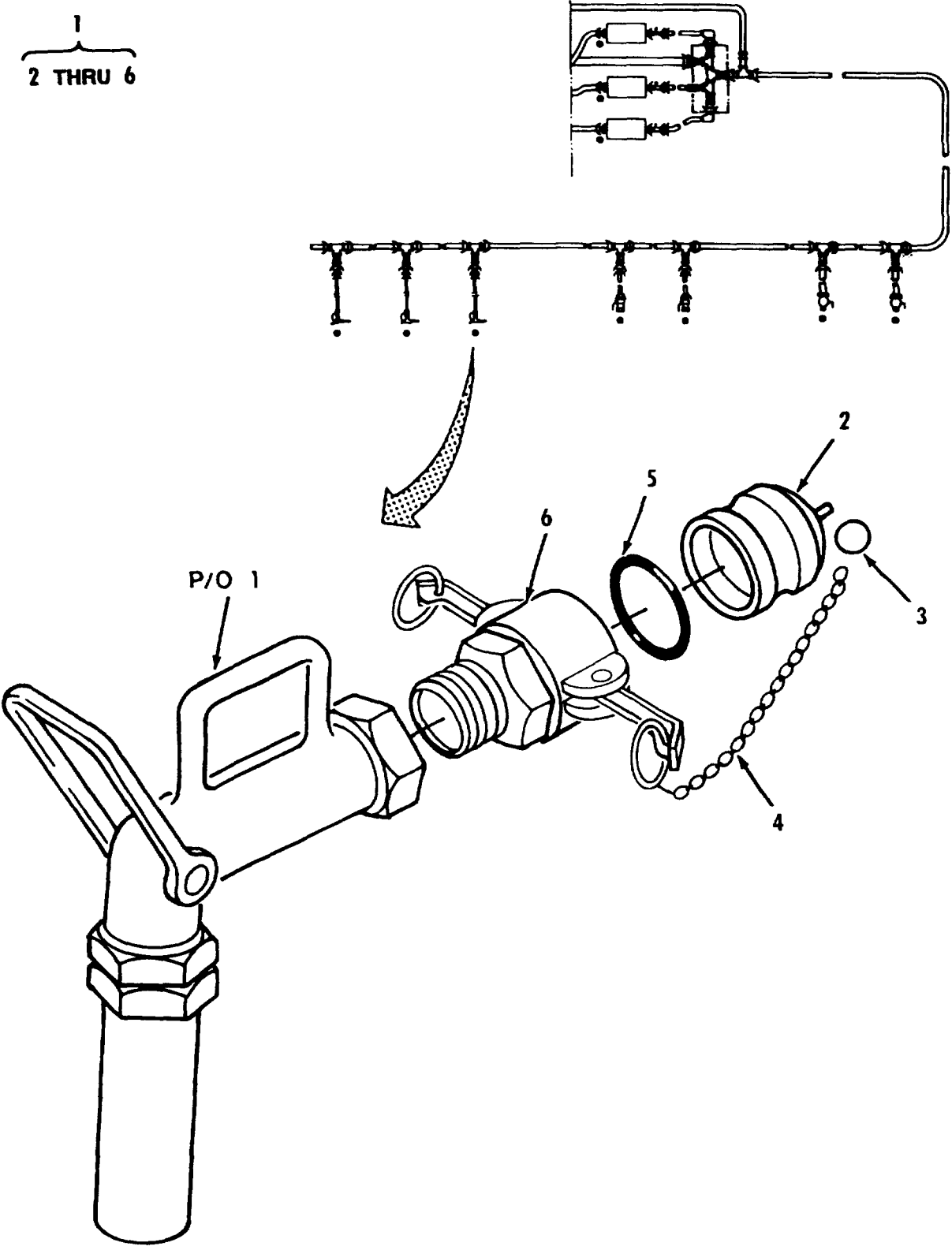


Figure 2. Arctic Nozzle, Fuel Oil Servicing



SECTION II

TM 10-4930-241-23P

(1) ITEM NO	(2) SMR CODE	(3) NSN	(4) CAGEC	(5) PART NUMBER	(6) DESCRIPTION AND USABLE ON CODES (UOC)	(7) QTY
					GROUP 01 MODULE, ARCTIC FUEL SYSTEM SUPPLY POINT (AFSSP)	
					FIG. 2 ARCTIC NOZZLE, FUEL OIL SERVICING	
1	PAOOO		97403	13228E1838	.NOZZLE, ARCTIC FUEL .....	3
2	PAOOZ	4730008235316	96906	MS27029-9	...PLUG, QUICK DISCONNE .....	1
3	XBOZZ	5340011778975	39428	90177A218	..HOLDER, KEY .....	1
4	MOOZZ		19099	CHAIN-19L	...CHAIN MAKE FROM P/N .....	1
					RRC271TYPE2CLASS3, (81349) .....	
5	PCOZZ		97403	13228E1768-5	..GASKET .....	1
6	PAOZZ	4730002031010	96906	MS27026-9	..COUPLING HALF, QUICK .....	1

END OF FIGURE