

\*TM5-4320-272-20P

---

TECHNICAL MANUAL

UNIT MAINTENANCE REPAIR PARTS  
AND SPECIAL TOOLS LIST

**PUMPING ASSEMBLY, FLAMMABLE  
LIQUID BULK TRANSFER; GASOLINE  
ENGINE DRIVEN; 350 GPM CAPACITY,  
275 FEET TOTAL DYNAMIC HEAD;  
WHEEL MOUNTED  
(PEABODY BARNES, INC.  
MODEL US37ACG)  
NSN 4320-00-195-4914**

Approved for public release; distribution is unlimited

\*This manual supersedes TM 5-4320-272-20P, 21 December 1981, including all changes

---

HEADQUARTERS, DEPARTMENT OF THE ARMY

20 APRIL 1990

**Direct Support and General Support Maintenance  
Repair Parts and Special Tools List  
for  
PUMPING ASSEMBLY, FLAMMABLE LIQUID  
BULK TRANSFER; GASOLINE ENGINE DRIVEN  
350 GPM CAPACITY, 275 FEET TOTAL DYNAMIC HEAD;  
WHEEL MOUNTED (PEABODY BARNES MODEL US37ACG)  
NSN 4320-00-195-4914**

Approved for public release; distribution is unlimited.

Current as of 26 December 1989

**REPORTING OF ERRORS AND RECOMMENDING IMPROVEMENTS**

You can help improve this manual. If you find any mistake or if you know of a way to improve the procedures, please let us know. Mail your letter, DA Form 2028 (Recommended Changes to Publications and Blank Forms) or DA Form 2028-2 located in the back of this manual direct to: Commander, U.S. Army Troop Support Command, ATTN: AMSTR-MCTS, 4300 Goodfellow Blvd., St. Louis, MO 63120-1798  
A reply will be furnished directly to you.

**TABLE OF CONTENTS**

	Page	Illust/ Figure
Section I. Introduction . . . . .	1	
Section II. Repair Parts List		
Group 01 Engine		
Engine (not applicable)		
Engine Block and Related Parts.....	2-1	2
Cylinder Block . . . . .	3-1	3
Crankshaft and Piston . . . . .	4-1	4
Camshaft ( not applicable)		
Oil Pump Assembly (not applicable)		
Oil Filter and Lines . . . . .	7-1	7
Manifold . . . . .	8-1	8
Group 03 Fuel System		
Carburetor . . . . .	9-1	9
Fuel Pump . . . . .	10-1	10
Air Cleaner Assembly . . . . .	11-1	11
Air Cleaner Bracket and Piping . . . . .	12-1	12
Fuel Tank, Lines, and Fitting . . . . .	13-1	13
Governor and Controls . . . . .	14-1	14
Fuel Strainer Assembly . . . . .	15-1	15

\*This manual supersedes TM5-4320-272-20P, 21 December 1981, including all changes.

**TM 5-4320-272-20P**

		Page	Illust/ Figure
Group 04	Exhaust System		
	Muffler and Piping . . . . .	16-1	16
Group 05	Cooling System		
	Air Shrouding . . . . .	17-1	17
Group 06	Electrical System		
	Flywheel Alternator (not applicable)		
	Starting Motor . . . . .	19-1	19
	Ignition System . . . . .	20-1	20
	Control Panel and Connections. . . . .	21-1	21
	Battery Box and Battery . . . . .	22-1	22
Group 10	Axle		
	Axle . . . . .	23-1	23
Group 13	Wheels		
	Wheel and Hub . . . . .	24-1	24
Group 15	Frame		
	Trailer Frame and Related Parts. . . . .	25-1	25
	Frame Accessory items . . . . .	26-1	26
Group 47	Gages Non-Electrical		
	Instruments and Connections.. . . . .	27-1	27
Group 55	Pumps		
	Suction Piping . . . . .	28-1	28
	Discharge Piping . . . . .	29-1	29
	Gate Valve Assembly . . . . .	30-1	30
	Suction Strainer Assembly . . . . .	31-1	31
	Check Valve Assembly . . . . .	32-1	32
	Air Eliminator Assembly . . . . .	33-1	33
	Centrifugal Pump . . . . .	34-1	34
Section III.	Special Tools List (not applicable)		
Section IV.	Cross Reference Indexes . . . . .	I-1	
	National Stock Number Index.. . . . .	I-1	
	Part Number Index . . . . .	I-4	
	Figure and Item Number Index. . . . .	I-14	

UNIT MAINTENANCE REPAIR PARTS AND  
SPECIAL TOOLS LIST

SECTION I. INTRODUCTION

**1. SCOPE.** This RPSTL lists and authorizes spares and repair parts; special tools; special test, measurement, and diagnostic equipment (TMDE); and other special support equipment required for performance of unit maintenance of the Pumping Assembly. It authorizes the requisitioning, issue, and disposition of spares, repair parts and special tools as indicated by the source, maintenance and recoverability (SMR) codes.

**2. GENERAL.** In addition to this section, Introduction, this Repair Parts and Special Tools List is divided into the following sections:

**a. Section II. Repair Parts List.** A list of spares and repair parts authorized by this RPSTL for use in the performance of maintenance. The list also includes parts which must be removed for replacement of the authorized parts. Parts lists are composed of functional groups in ascending alphanumeric sequence, with the parts in each group listed in ascending figure and item number sequence. Bulk materials are, listed in item name sequence. Repair parts kits are listed separately in their own functional group within Section II. Repair parts for repairable special tools are also listed in this section. Items listed are shown on the associated illustration(s)/figure(s).

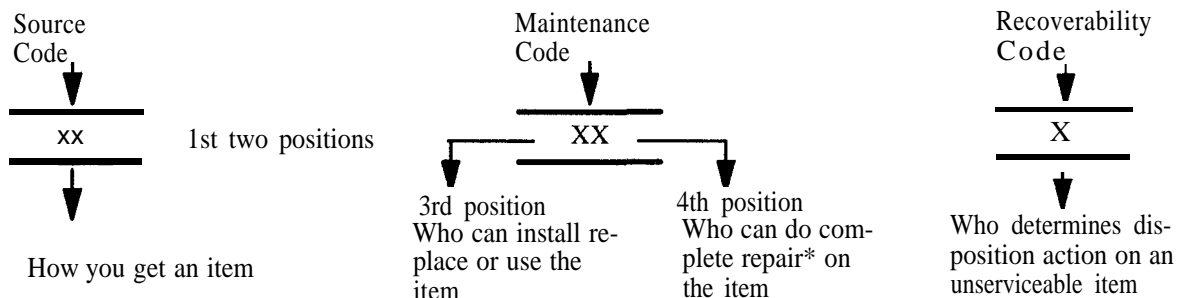
**b. Section III. Special Tools List.** A list of special tools, special TMDE, and other special support equipment authorized by this RPSTL (as indicated by Basis of Issue (BOI) information in DESCRIPTION AND USABLE ON CODE column) for the performance of maintenance.

**c. Section IV. Cross-references Indexes.** A list, in National Item Identification Number (NIIN) sequence, of all National stock numbered items appearing in the listing, followed by a list in alphanumeric sequence of all part numbers appearing in the listings. National stock numbers and part numbers are cross referenced to each illustration figure and item number appearance. The figure and item number index lists figure and item number in alphanumeric sequence and cross references NSN, FSCM and part number.

**3. EXPLANATION OF COLUMNS (SECTIONS II AND III).**

**a. ITEM NO. (Column (1)).** Indicates the number used to identify items called out in the illustration

**b. SMR Code (Column (2)).** The Source, Maintenance, and Recoverability (SMR) code is a 5-position code containing supply/requisitioning information, maintenance category authorization criteria, and disposition instruction, as shown in the following breakout:



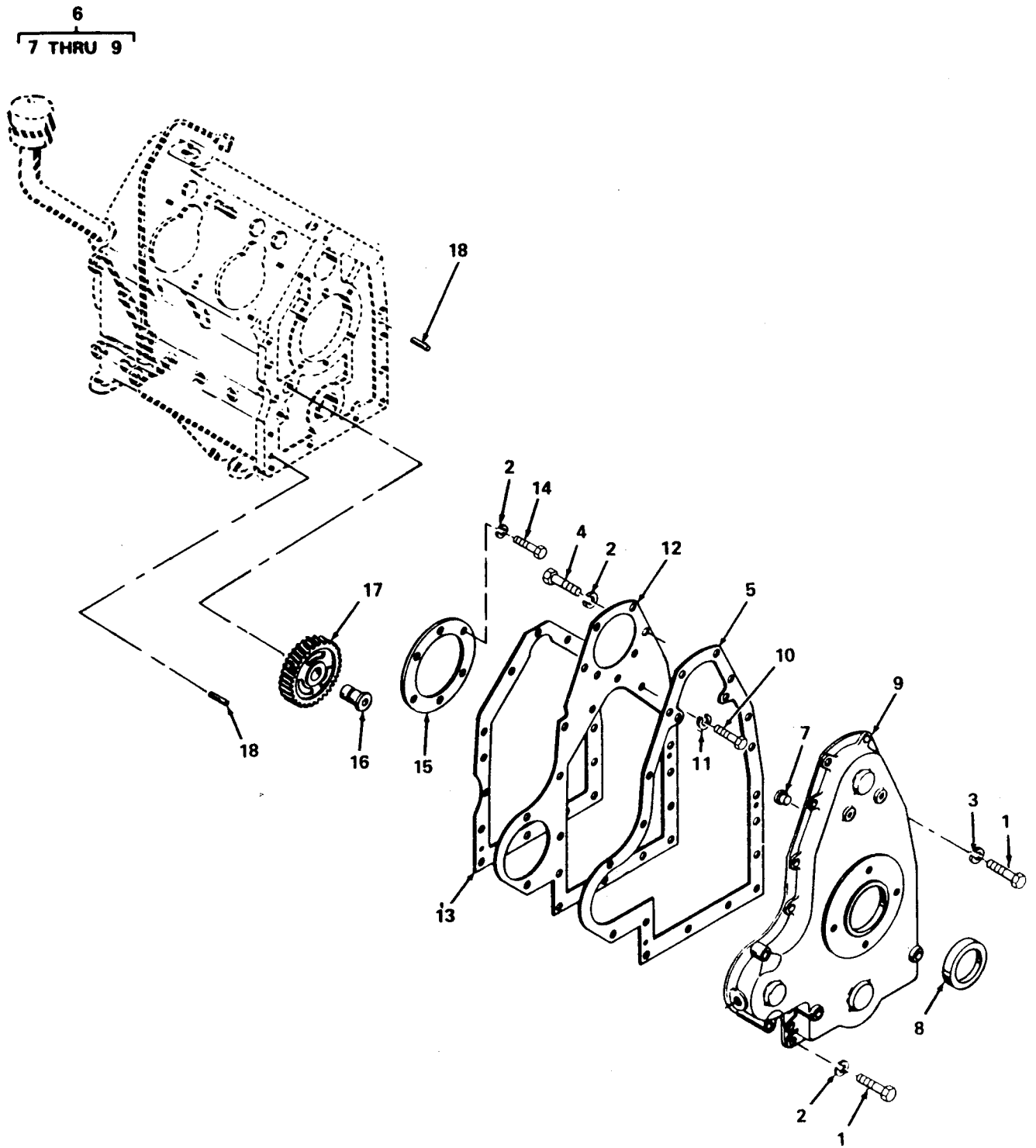


Figure 2. Engine Block and Related Parts (Sheet 1 of 2).

37  
38 THRU 48

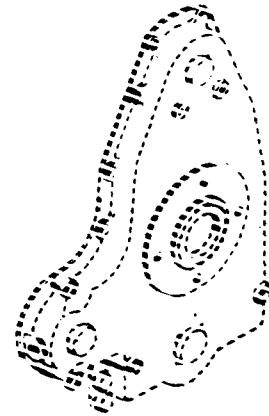
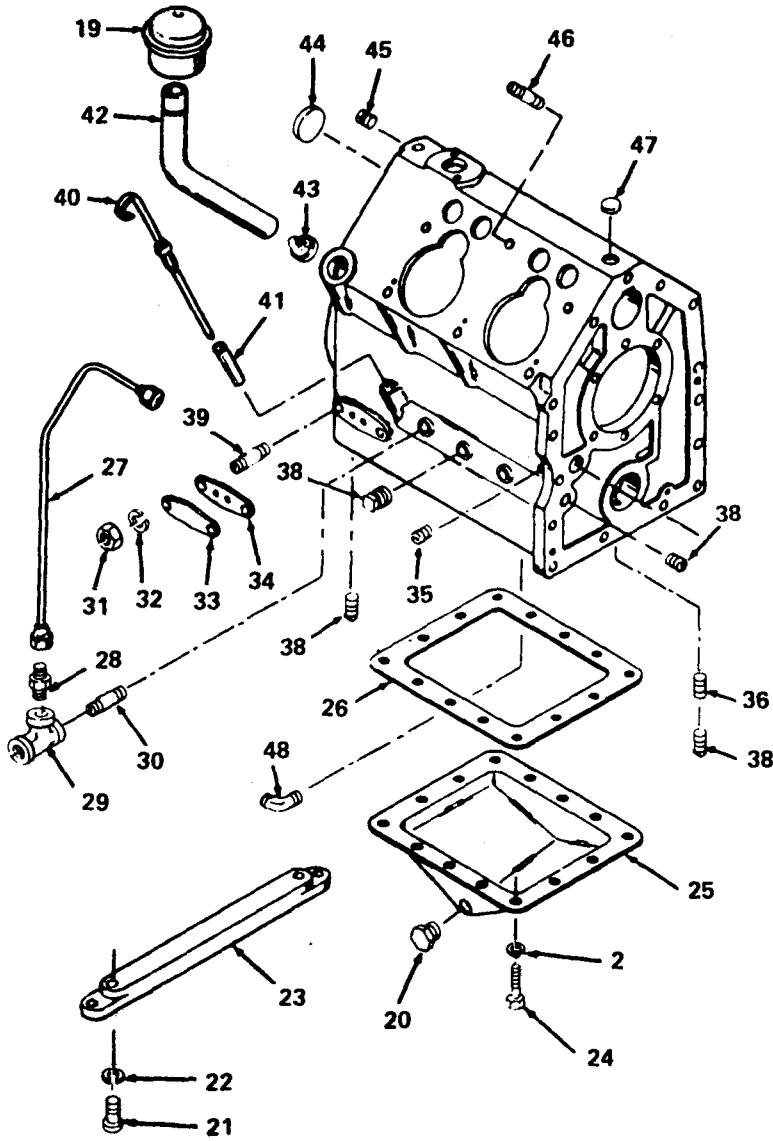


Figure 2. Engine Block and Related Parts (Sheet 2 of 2).

SECTION II				TM5-4320-272-20P	
(1)	(2)	(3)	(4)	(5)	(6)
ITEM	SMR		PART		
NO	CODE	FSCM	NUMBER	DESCRIPTION AND USABLE ON CODE (UOC)	QTY
				GROUP 01 ENGINE	
				FIG. 2 ENGINE BLOCK AND RELATED PARTS	
19	PBOZZ	66289	LO60-1	BREATHER W/BREATHER	1
20	PBOZZ	66289	XK7B	PLUG, PIPE OIL PAN	1
27	PAOZZ	66289	RM980	TUBE ASSEMBLY,METAL	1
40	PBOZZ	66289	RJ173	GAGE ROD-CAP, LIQUID	1
				END OF FIGURE	

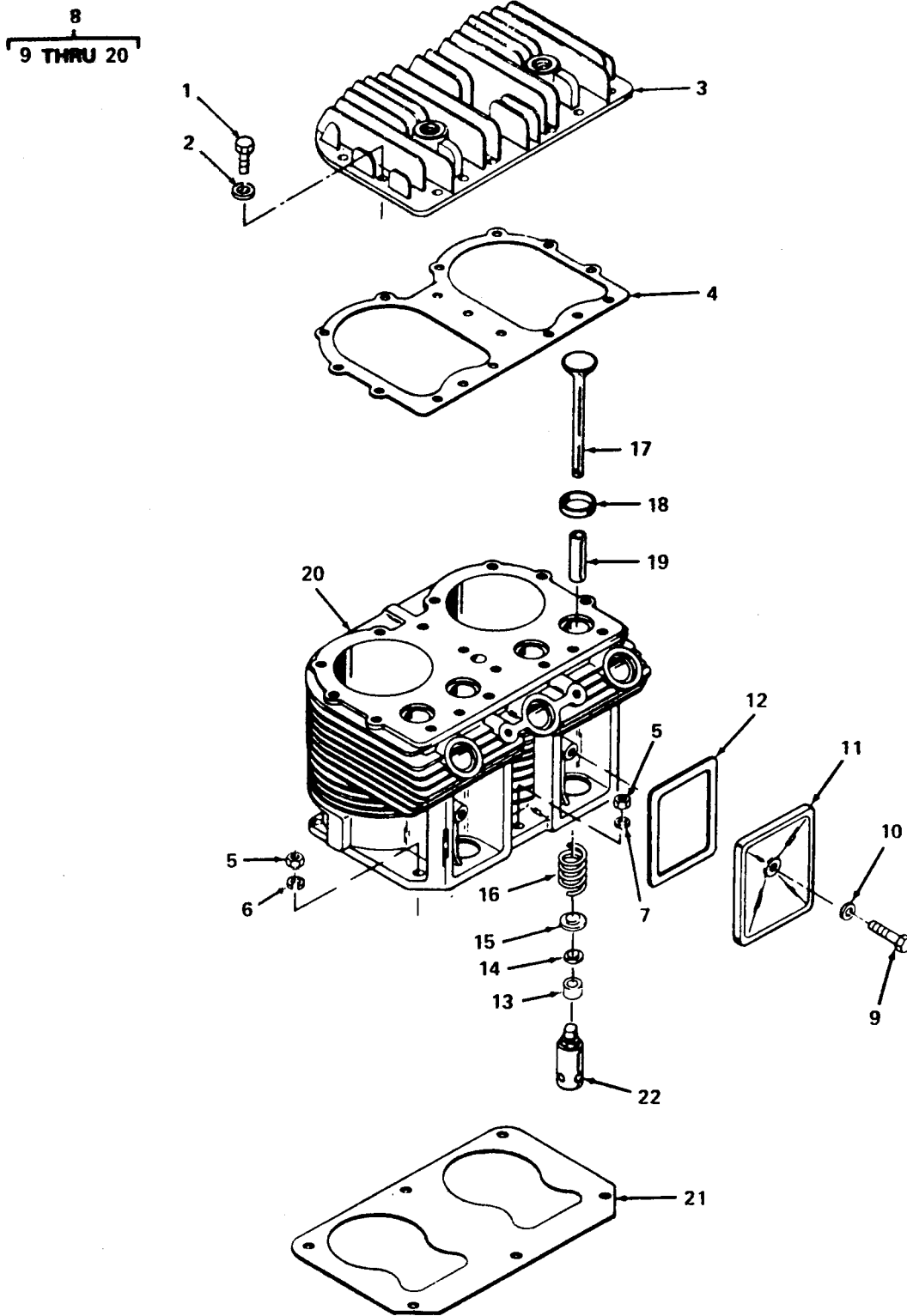


Figure 3. Cylinder Block.



SECTION II				TM5-4320-272-20P	
(1)	(2)	(3)	(4)	(5)	(6)
ITEM NO	SMR CODE	FSCM	PART NUMBER	DESCRIPTION AND USABLE ON CODE (UOC)	QTY
GROUP 01 ENGINE					
FIG. 3 CYLINDER BLOCK					
1	PAOZZ	66289	XD30	BOLT,MACHINE, HEAD MTG	34
2	PAOZZ	66289	PH22A	WASHER, FLAT	34
3	PBOZZ	66289	AB97B2S1	CYLINDER HEAD	2
4	PAOZZ	66289	QD631	GASKET PART OF KIT P/N Q18B	2
END OF FIGURE					