

DEPARTMENT OF THE ARMY TECHNICAL MANUAL

DIRECT SUPPORT, GENERAL SUPPORT,
AND DEPOT MAINTENANCE MANUAL
INCLUDING REPAIR PARTS AND
SPECIAL TOOL LISTS

PISTOL, CALIBER .45, AUTOMATIC: M1911A1,

WITH HOLSTER, W/E

(1005-673-7965)

PISTOL, CALIBER .45, AUTOMATIC: M1911A1,

WITH HOLSTER, SHOULDER, W/E

(1005-561-2003)

This copy is a reprint which includes current pages from Changes 1 through 4.

HEADQUARTERS, DEPARTMENT OF THE ARMY

APRIL 1968

TECHNICAL MANUAL }
No. 9-1005-211-35

HEADQUARTERS,
DEPARTMENT OF THE ARMY
WASHINGTON, DC., 4 April 1968

PISTOL, CALIBER .45, AUTOMATIC M1911A1

This manual is current as of 6 February 1968

	Paragraphs	Page
CHAPTER 1.	INTRODUCTION	
Section I.	General	1-1,1-2 1-1
II.	Description and data	1-3 1-1
CHAPTER 2.	DIRECT SUPPORT, GENERAL SUPPORT AND DEPOT MAINTENANCE INSTRUCTIONS	
Section I.	Repair parts, special tools and equipment	2-1, 2-2 2-1
II.	Troubleshooting.....	2-3 2-3
III.	Inspection.....	2-4,2-6 2-4
IV.	Depot maintenance instructions	2-7 2-7
CHAPTER 3.	REPAIR INSTRUCTIONS	
Section I.	General Maintenance	3-1,3-3 3-1
II.	Maintenance of Caliber .45, Automatic, Pistol, M1911A1.....	3-4 3-1
III.	Repair standards	3-5,3-6 3-3
CHAPTER 4.	FINAL INSPECTION.....	4-1,4-6 4-1
APPENDIX A.	REFERENCES	A-1
B.	DIRECT SUPPORT, GENERAL SUPPORT AND DEPOT MAINTENANCE REPAIR PARTS AND SPECIAL TOOLS LISTS	
	Repair Parts For:	
	Major Groups and Assemblies	B-4
	Slide Group	B-4
	Receiver Group.....	B-5

This manual supersedes TM 9 1005-211-34, 22 June 1964, including C1, 13 April 1967, and TM 9-1005-211-35P, 29 April 1964.

CHAPTER 1

INTRODUCTION

Section I. GENERAL

1-1. Scope

These instructions are in accordance with the MAC and are published for the use of direct support, general support, and depot maintenance personnel maintaining the Caliber .45, Automatic, Pistol M1911A1. They provide information on the maintenance of the equipment which is beyond the scope of the tools, equipment, personnel or supplies normally available to operator's and organizational maintenance.

1-2. Forms and Records

- a. *General.* DA Forms and procedures used

for equipment maintenance will be only those prescribed in TM 38-750, Army Equipment Record Procedures.

b. *Recommendations for Equipment Publication Improvements.* Report of errors, omissions, and recommendation for improving this publication by the individual user is encouraged. Reports should be submitted on DA Form 2028 (Recommended Changes to DA Publication) and forwarded direct to the Commanding General, Headquarters, U.S. Army Weapons Command, ATTN: AMSWE-SMM-P, Rock Island Arsenal, Rock Island, Illinois 61201.

Section II. DESCRIPTION AND DATA

1-3. Description and Tabulated Data

Refer to TM 9-1005-211-12.

DIRECT SUPPORT, GENERAL SUPPORT, AND DEPOT MAINTENANCE INSTRUCTIONS

Section I. REPAIR PARTS, SPECIAL TOOLS AND EQUIPMENT

2-1. Repair Parts Special Tools and Equipment

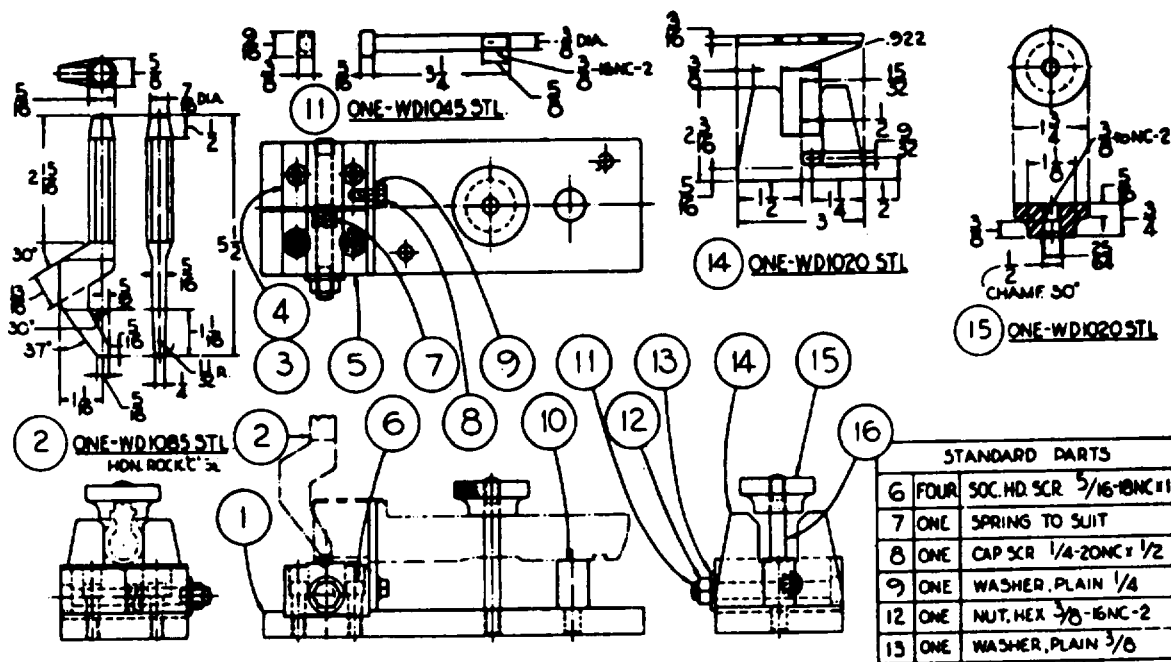
Refer to appendix B.

2-2. Improvised Tools

Refer to table 2-1.

Table 2-1. Improvised Tools

Item	References		Required for
	Figure	Use	
Fixture, riveting front sight	Fig. 2-1, 2-2	Fig. 3-1	To rivet front sight in place on elide assembly.
Tool, staking bushing	Fig. 2-3	Fig. 3-2	To stake bushing in receiver.
Tool, staking plunger tube	Fig. 2-4	Fig. 3-3	To stake plunger tube in receiver.



SHEET 1 OF 2

Figure 2-1. Improvised fixture for riveting front sight, (1 of 2)

WE 17383