

TUG, HARBOR DIESEL, 1200 H. P. STEEL 100 FT DESIGN 3006

(HULL NUMBERS LT 1936 THRU LT 1977 AND LT 2202)

Reference: FEDERAL SUPPLY CATALOG C9100-IL, LO55-1925-204-12-1, 2, 3, 5, 6, 7, 8, TM55-1925-204-12 and TM55-1925-204-34

Intervals are based on normal hours of operations, Adjust to compensate for abnormal operations and severe conditions. During inactive periods, sufficient lubrication must be performed for adequate preservation.

Clean parts with SOLVENT, Dry-cleaning, Type 11, (SD-2). Dry before lubricating.

Relubricate after exposure to salt water.

Lubricate points indicated by dotted arrow shafts on both sides of equipment.

Clean fittings before lubricating.

Drain crankcases and gear boxes while the lubricant is still warm from previous use. Refill and check level.

FOLD

FOLD

LUBRICANT ● INTERVAL

INTERVAL ● LUBRICANT

Worm Gear Case Fill and Level Plug (Check, maintain level at fill plug) (See key)

GO

50

50

GAA

Main Shaft Bearings

Worm Gear Case Drain (Drain and refill) (See note 4)

2400

50

CW

Main Spur Gears (Apply with brush)

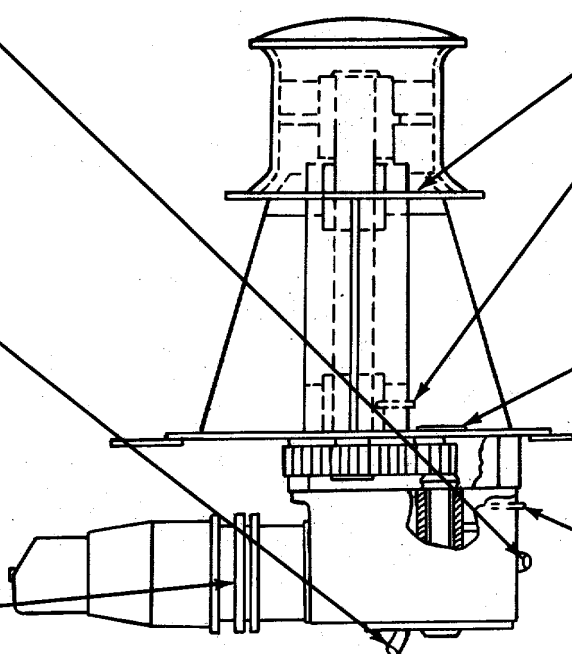
Motor Bearings GAA

200

50

GAA

Pinion Shaft Bearing



MODEL R-6293 CAPSTAN